

O.D.O.T. DISTRICT 2 SURVEY OFFICE (USE ONLY)

PERSONNEL

REFERENCE NO. 39

SHEET 1 OF 8

NOTES RHOADES

DATE 4/10/19

ROUTE US 127

H.C. O'DONNELL

WEATHER PTLY. CLOUDY

COUNTY WILLIAMS

R.C. RHOADES

TEMP. 40°

TOWNSHIP BRADY

SECTION 7

DWG BY NASON PID 102821

T 7 N R 4 E

TYPE MONUMENT MAG/WASHER

ON SURFACE - ~~BELOW~~ ON

OFFSET Q PAVEMENT ON LT : RT

10.6' TO LT EDGE PAVEMENT

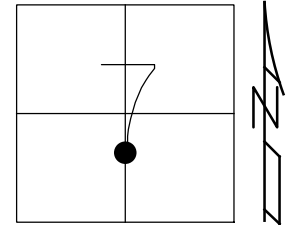
STATION: 705+94.71

HORZ.DATUM: NAD83(2011)

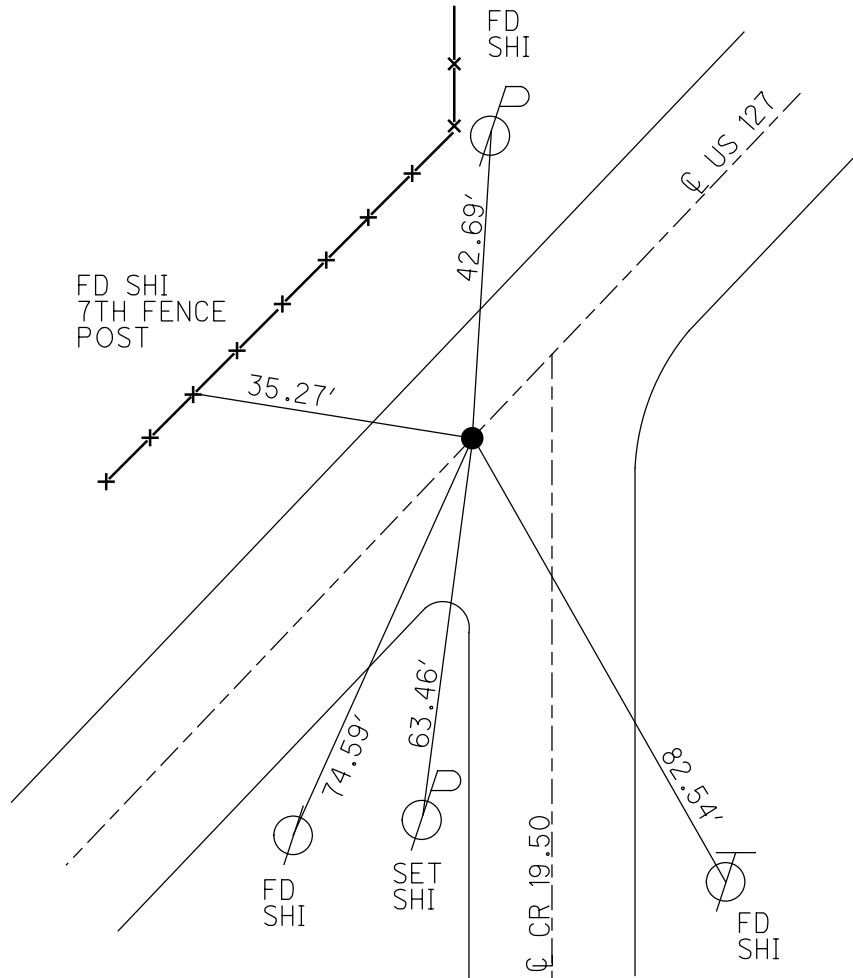
GEOID: 2012A

GRID: NORTHING: 701677.989

EASTING: 1435415.331



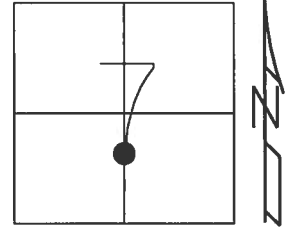
RECORD:  
 FD SM.R.R.SPIKE  
 6/11/02, KPM  
 SET MAG/WASHER  
 9/15/03, MDB  
 FD MAG/WASHER  
 SV39  
 6/22/11, MC  
 FD SM.R.R.SPIKE  
 REF39  
 5/2/13, SDC  
 FD MAG/WASHER  
 REF39  
 6/12/17, JFO  
 SET MAG/WASHER  
 8/15/19, JFO



O.D.O.T. DISTRICT 2 SURVEY OFFICE (USE ONLY)

|           |                |           |               |          |                 |           |
|-----------|----------------|-----------|---------------|----------|-----------------|-----------|
| PERSONNEL | REFERENCE NO.  | <u>39</u> | SHEET         | <u>1</u> | OF              | <u>12</u> |
| NOTES     | <u>RHOADES</u> | DATE      | <u>5/2/13</u> | ROUTE    | <u>US 127</u>   |           |
| H.C.      | <u>CODER</u>   | WEATHER   | <u>FAIR</u>   | COUNTY   | <u>WILLIAMS</u> |           |
| R.C.      | <u>LAU</u>     | TEMP.     | <u>75°</u>    | TOWNSHIP | <u>BRADY</u>    |           |
|           |                |           |               | SECTION  | <u>7</u>        |           |
|           |                |           |               | T        | <u>7</u>        | R         |
|           |                |           |               |          | <u>N</u>        | <u>E</u>  |

TYPE MONUMENT SM.R.R.SPIKE  
 ON SURFACE - ~~BELOW~~ ON  
 LEFT - ☉ PAV'T - RIGHT ON  
10.6' TO LT EDGE PAVEMENT  
 S.L.M. 705+40.8  
 Grid: Northing: 701677.967 Easting: 1435415.231



RECORD:  
 POINT ON N/S  
 1/2 SEC. 7 LINE

FD SM.R.R.SPIKE  
 6/11/02, KPM

SET MAG/WASHER  
 9/15/03, MDB

FD MAG/WASHER  
 GPS, SV39  
 6/22/11, MC

