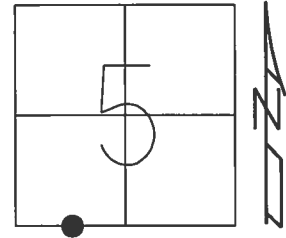


O.D.O.T. DISTRICT 2 SURVEY OFFICE (USE ONLY)

PERSONNEL \_\_\_\_\_ REFERENCE NO. 43 SHEET 4 OF 12

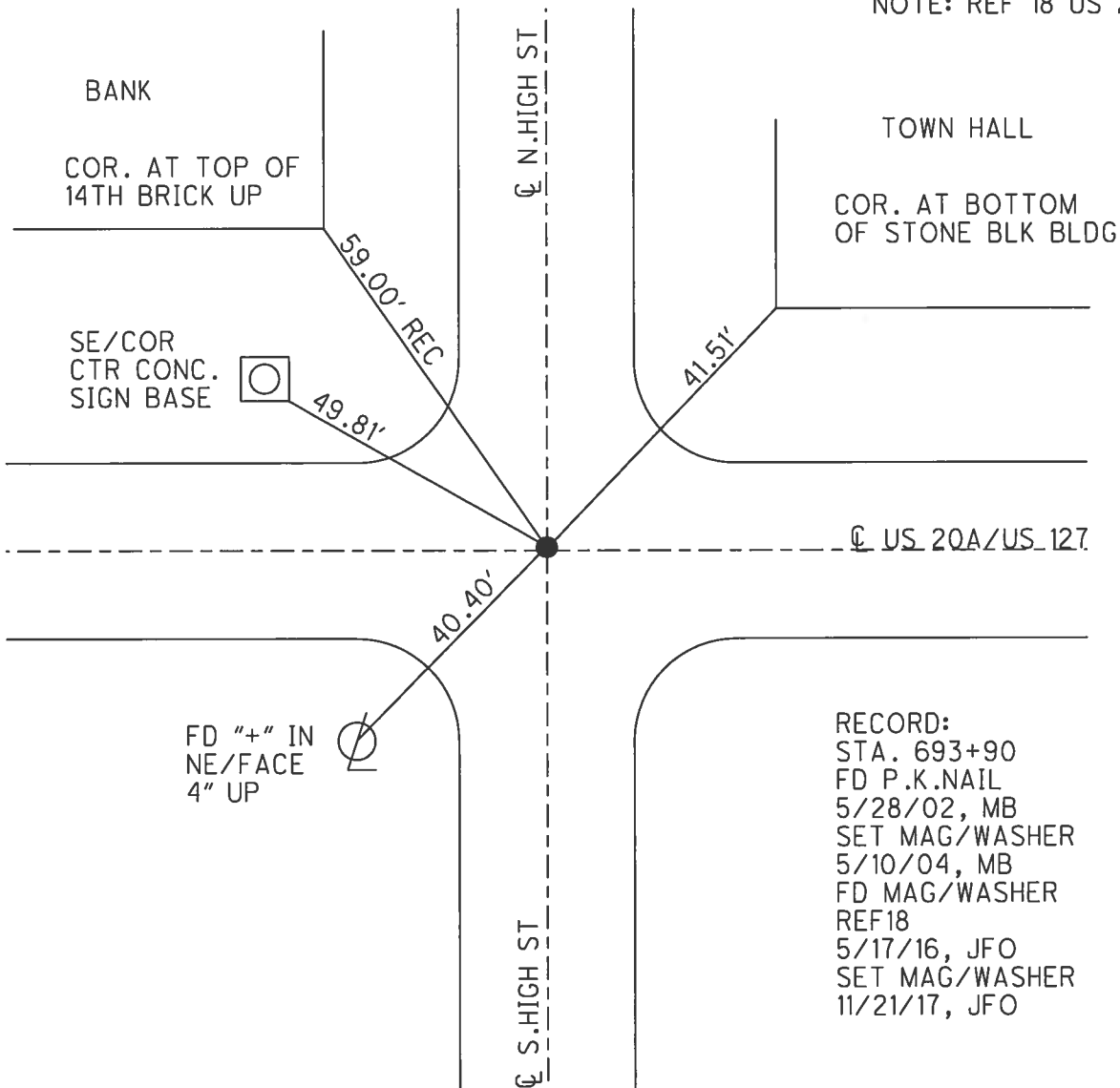
NOTES RHOADES DATE 4/19/17 ROUTE US 127  
 H.C. O'DONNELL WEATHER CLOUDY COUNTY WILLIAMS  
 R.C. RHOADES TEMP. 64° TOWNSHIP BRADY  
 \_\_\_\_\_ SECTION 5  
 \_\_\_\_\_ T 7 N R 4 E

TYPE MONUMENT MAG NAIL  
 ON SURFACE - ~~BELOW~~ ON \_\_\_\_\_  
 LEFT - ☉ PAV'T - RIGHT ON \_\_\_\_\_  
 - TO - EDGE PAVEMENT  
 S.L.M. 760+58



Grid: Northing: 705318.131 Easting: 1439236.559

NOTE: REF 18 US 20A



RECORD:  
 STA. 693+90  
 FD P.K.NAIL  
 5/28/02, MB  
 SET MAG/WASHER  
 5/10/04, MB  
 FD MAG/WASHER  
 REF18  
 5/17/16, JFO  
 SET MAG/WASHER  
 11/21/17, JFO