

O.D.O.T. DISTRICT 2 SURVEY OFFICE (USE ONLY)

PERSONNEL

REFERENCE NO. 31

SHEET 1 OF 32

NOTES ROUSOS
 H.C. HARBUAGH
 R.C. HOMAN

DATE 6/20/11
 WEATHER CLOUDY
 TEMP. 72°

ROUTE US 127
 COUNTY WILLIAMS
 TOWNSHIP BRADY
 SECTION 32

DWG BY MILLER PID 95864

T 8 N R 4 E

TYPE MONUMENT R.R. SPIKE

ON SURFACE - ~~BELOW~~ ON

OFFSET \odot PAVEMENT 1.5' LT : ~~RT~~

- TO - EDGE PAVEMENT

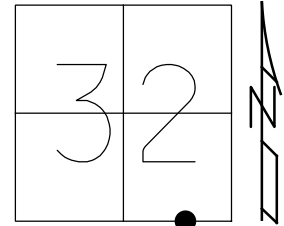
STATION: 826+50.71

HORZ. DATUM: NAD83 (2011)

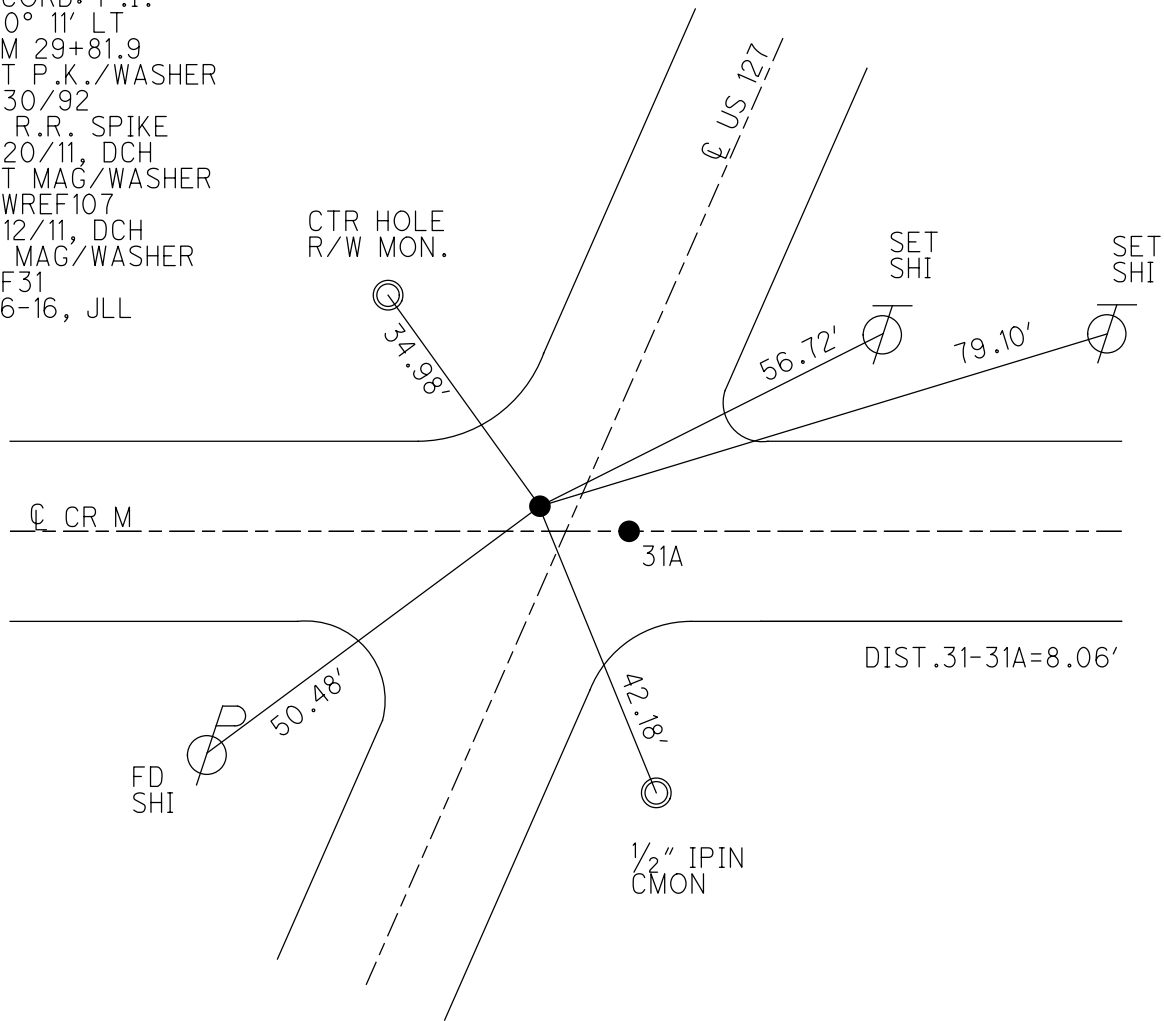
GEOID: GEOID 2012A

GRID: NORTHING: 710605.861

EASTING: 1442458.650



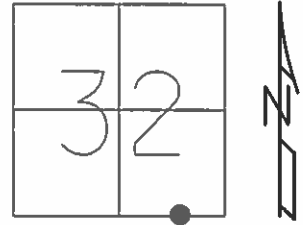
RECORD: P.I.
 $\Delta=0^\circ 11' LT$
 SLM 29+81.9
 SET P.K./WASHER
 3/30/92
 FD R.R. SPIKE
 6/20/11, DCH
 SET MAG/WASHER
 NEWREF107
 9/12/11, DCH
 FD MAG/WASHER
 REF31
 9-6-16, JLL



O.D.O.T. DISTRICT 2 SURVEY OFFICE (USE ONLY)

PERSONNEL _____ REFERENCE NO. 31 SHEET 1 OF 31
 NOTES ROUSOS DATE 6/20/11 ROUTE US 127
 H.C. HARBUAGH WEATHER CLOUDY COUNTY WILLIAMS
 R.C. HOMAN TEMP. 72° F TOWNSHIP BRADY
 SECTION 32
 T 8 N R 4 E

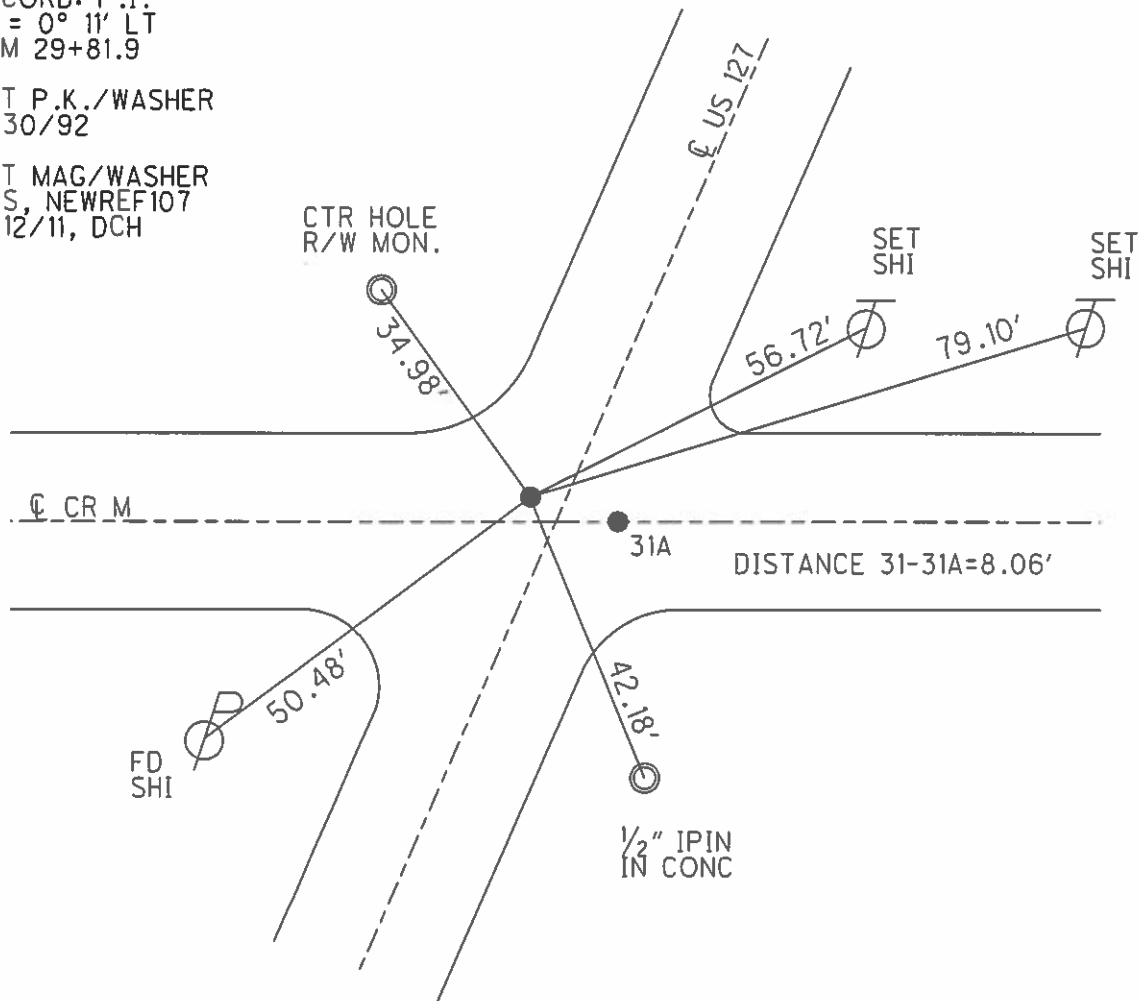
TYPE MONUMENT R.R. SPIKE
 ON SURFACE - ~~BELOW~~ ON
 LEFT - Q PAV'T - ~~RIGHT~~ 1.5'
TO EDGE PAVEMENT
 S.L.M. 826+50.71
 GRID: NORTHING: 710565.106 EASTING: 1442375.641



RECORD: P.I.
 $\Delta = 0^{\circ} 11' LT$
 SLM 29+81.9

SET P.K./WASHER
 3/30/92

SET MAG/WASHER
 GPS, NEWREF107
 9/12/11, DCH



Qtr. Line
S. 89° 44.0' E.

LEGEND

- A - Found recorded 1/2" STONE.
 - B - Made diligent search for recorded 1/2" STONE - Did not find. Used 4" stl. well casing pipe being used as an A.P. in E-W fence line.
 - C - Found recorded Qtr. STONE. (E. Qtr. post Sec. 32 T-8-N)
 - D - Found recorded sec. cor. STONE (SE Cor. Sec. 32)
 - F, G, H, J - Found recorded control points (3/8" x 3/4" Bars) on E 1932 1/4" line.
 - N - Found recorded 1/2" STONE 1321.3' east of Qtr STONE "C"
 - L - A point recorded as 1462.9' north of "A"
 - M - A point recorded as 1388.35' north of "D"
 - I - A point on line HJ that intersects Sec. Line DC
 - E - Extended line GF southwesterly to intersect Sec Line AD
 - K - J.S. Hoodley, Co. Surveyor, planted STONE in 1899 on line AED 270' east of STONE A - Made diligent search - Did not find. STONE manifestly lost in 1932 grading operation.
- Line AB computes 2633.32'
 Line BC measures 1312.2'
 Line CD computes 2632.93'
 Line AD measures 1327.5'
 Line FG recorded as 1407.73'
 Line GH recorded as 657.81'
 Line HJ recorded as 794.61'
 Line EFG meas. 1402.88'
 Line CJ on line CN meas. 10.06'

1/4" Line

N. 0° 24.3' E.

T.P. 19W 7

E CHIO TURNPIKE

T.P. 19W 8

- Line AE meas. 261.49' on line AEKD
- Line EF meas. 1.15' on line EFG
- Line EK meas. 8.51' on line AEKD
- Line CI meas 50.97' on line CID
- Line IT comp. 51.95' on line HIJ
- Line CJ meas. 10.06' on line CJN
- Point F recorded as PI sta. 29+81.9
- Point J recorded as PI sta. 58+39.52

E 1/2 SE 1/4 Sec. 32 T-8-N R.L.E
 BRADY TWP.
 computes 79.6271 Ac

Red Beach
 C. Newcomb
 W. Krape
 Apr - May 1974

US 127 N. 26° 50.0' E.
 Monumented 1932 1/4" line

E 1899 Survey - Wm. Co. Sur.
 Used in 1963 & 1971 land surveys

E Co. Red. "M"
 Sec. Line

Sec. 32
 Sec. 5

Sec. 32
 Sec. 53

Sec. Line

PI sta. 50+47.43 Dc=3° 00'
 Δ-14° 32' Lt. Recorded
 Δ- Measures 14° 32.6' Lt.

PI sta. 43+89.63 Dc=1° 00'
 Δ-0° 56' Lt. Recorded
 Δ- Measures 0° 56.4' Lt.

N. 11° 21.0' E.

N. 25° 53.6' E.

S. 0° 11.0' W.

E Twp Rd. #1-50

S. 89° 47.1' E.

B

C

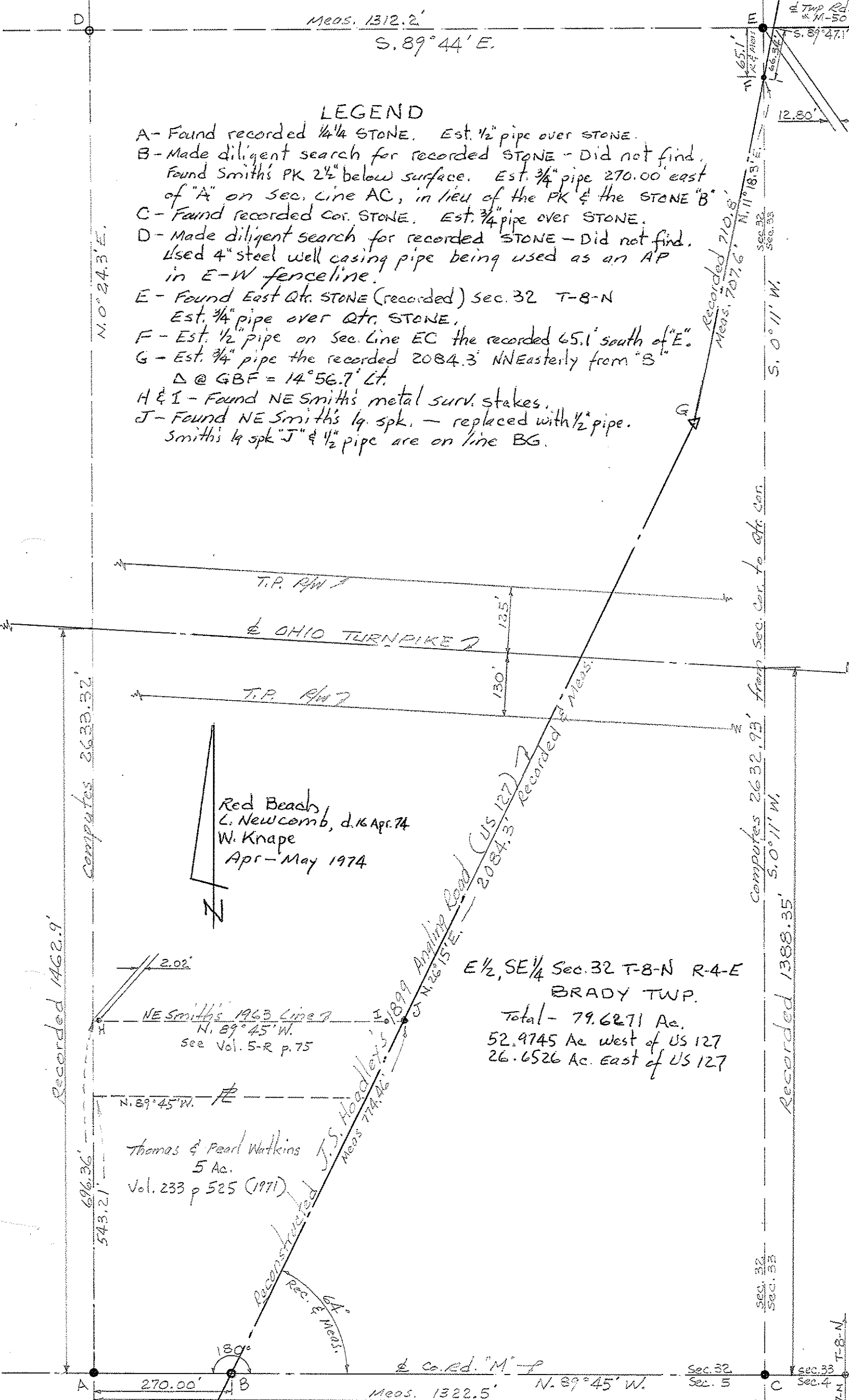
A

D

Meas. 1312.2'
S. 89° 44' E.

LEGEND

- A - Found recorded 1/4" STONE. Est. 1/2" pipe over STONE.
- B - Made diligent search for recorded STONE - Did not find. Found Smith's PK 2 1/2" below surface. Est. 3/4" pipe 270.00' east of "A" on Sec. Line AC, in lieu of the PK & the STONE "B"
- C - Found recorded cor. STONE. Est. 3/4" pipe over STONE.
- D - Made diligent search for recorded STONE - Did not find. Used 4" steel well casing pipe being used as an AP in E-W fence line.
- E - Found East Qtr. STONE (recorded) Sec. 32 T-8-N Est. 3/4" pipe over Qtr. STONE.
- F - Est. 1/2" pipe on Sec. Line EC the recorded 65.1' south of "E"
- G - Est. 3/4" pipe the recorded 2084.3' NNEasterly from "B" $\Delta @ GBF = 14^\circ 56.7' Lt.$
- H & I - Found NE Smith's metal surv. stakes.
- J - Found NE Smith's lg. spk. - replaced with 1/2" pipe. Smith's lg spk "J" & 1/2" pipe are on line BG.



Recorded 710.8'
Meas. 707.6' N. 11° 18.3' E.

Recorded 2632.93' from Sec. cor. to qtr. cor.
5.0° 11' W.

Recorded 1388.35'

Red Beach
L. Newcomb, d. 16 Apr. 74
W. Krape
Apr - May 1974

E 1/2, SE 1/4 Sec. 32 T-8-N R-4-E
BRADY TWP.

Total - 79.6271 Ac.
52.9745 Ac. West of US 127
26.6526 Ac. East of US 127

NE Smith's 1963 Line
N. 89° 45' W.
see Vol. 5-R p. 75

Thomas & Pearl Watkins
5 Ac.
Vol. 233 p 525 (1971)

J.S. Hoadley's
1899
Meas. 774.46'

Co. Rd. "M" -
Meas. 1322.5' N. 89° 45' W.

N. 0° 24.3' E.

Computed 2633.32'

Recorded 1462.9'

696.36'
543.21'

A

B

C

T-8-N
T-7-N

Sec. 32
Sec. 5
Sec. 33
Sec. 4