

O.D.O.T. DISTRICT 2 SURVEY OFFICE (USE ONLY)

PERSONNEL

REFERENCE NO. 31 A

SHEET 2 OF 32

NOTES ROUSOS DATE 6/20/11
 H.C. HARBUAGH WEATHER CLOUDY
 R.C. HOMAN TEMP. 72°

ROUTE US 127
 COUNTY WILLIAMS
 TOWNSHIP BRADY
 SECTION 32

DWG BY MILLER PID 95864

T 8 N R 4 E

TYPE MONUMENT P.K.NAIL

ON SURFACE - ~~BELOW~~ ON

OFFSET \odot PAVEMENT 7.55' ~~±~~ : RT

- TO - EDGE PAVEMENT

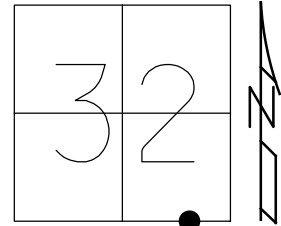
STATION: 826+53.45

HORZ.DATUM: NAD83 (2011)

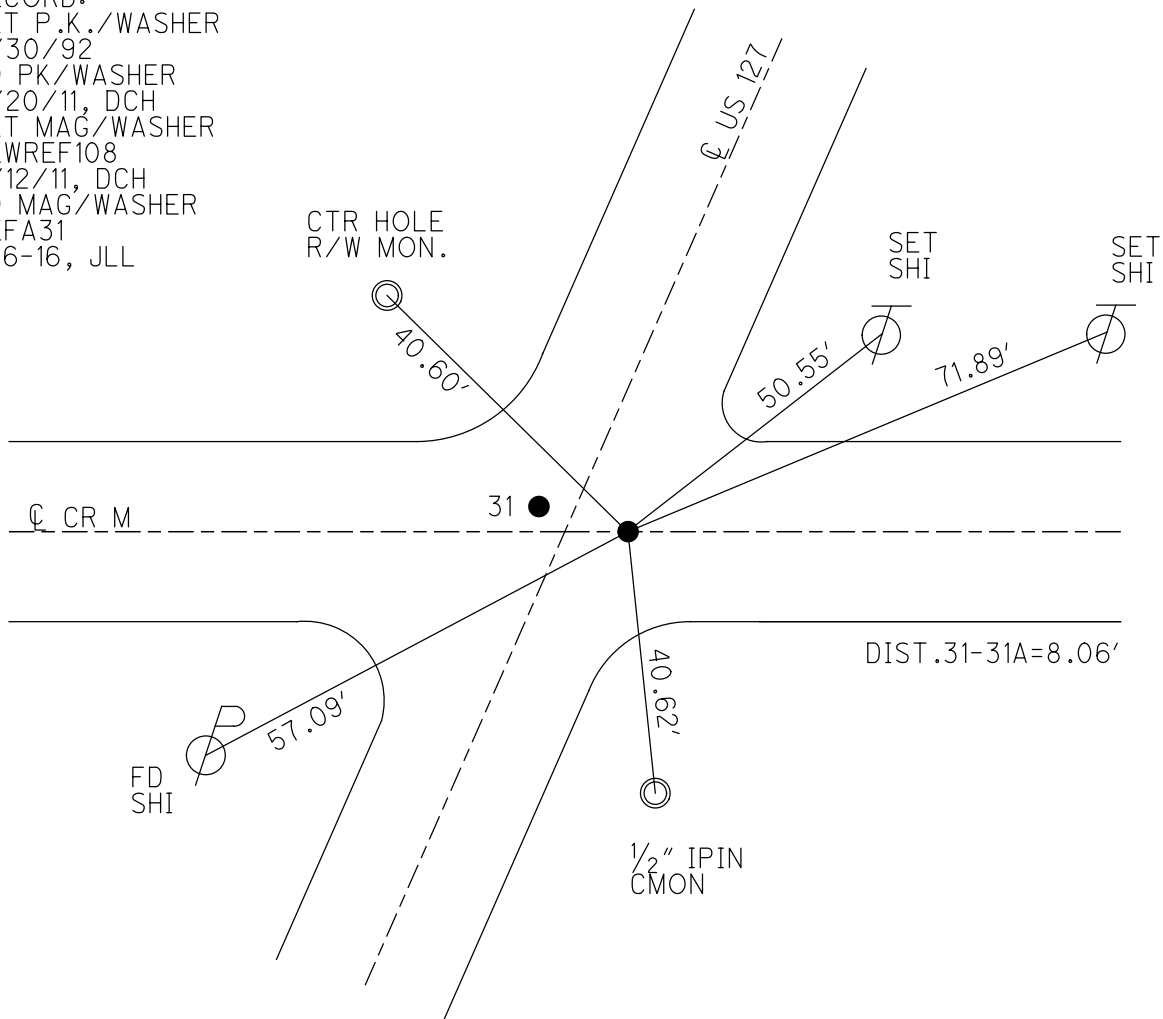
GEOID: GEOID 2012A

GRID: NORTHING: 710604.717

EASTING: 1442466.624



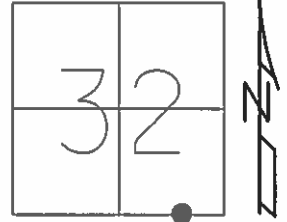
RECORD:
 SET P.K./WASHER
 3/30/92
 FD PK/WASHER
 6/20/11, DCH
 SET MAG/WASHER
 NEWREF108
 9/12/11, DCH
 FD MAG/WASHER
 REFA31
 9-6-16, JLL



O.D.O.T. DISTRICT 2 SURVEY OFFICE (USE ONLY)

PERSONNEL _____ REFERENCE NO. 31 A SHEET 2 OF 31
 NOTES ROUSOS DATE 6/20/11 ROUTE US 127
 H.C. HARBUAGH WEATHER CLOUDY COUNTY WILLIAMS
 R.C. HOMAN TEMP. 72° F TOWNSHIP BRADY
 _____ SECTION 32
 _____ T 8 N R 4 E

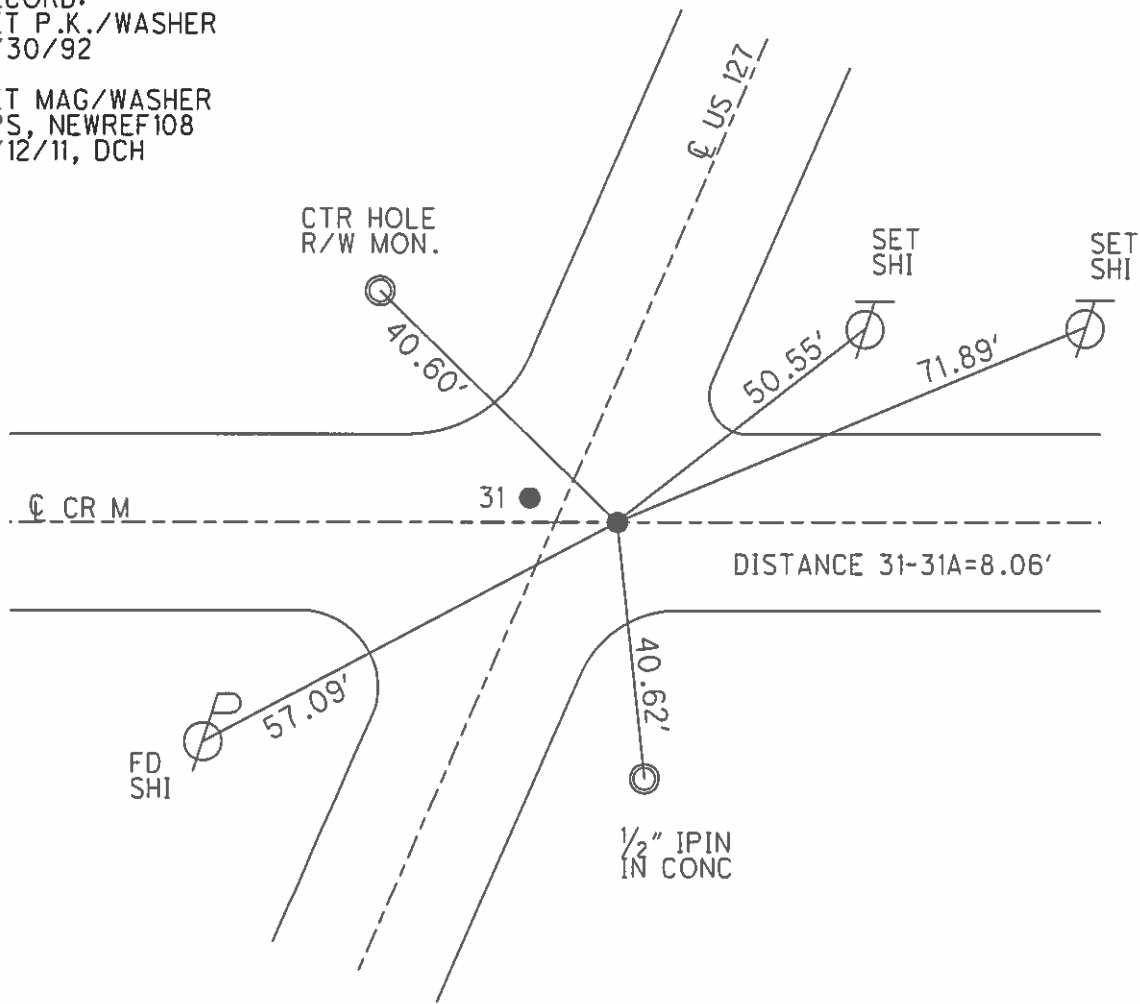
TYPE MONUMENT P.K.NAIL
 ON SURFACE - BELOW ON
~~LEFT~~ - Q PAV'T - RIGHT 7.55'
- TO - EDGE PAVEMENT
 S.L.M. 826+53.45



GRID: NORTHING: 710563.945 EASTING: 1442383.625

RECORD:
 SET P.K./WASHER
 3/30/92

SET MAG/WASHER
 GPS, NEWREF108
 9/12/11, DCH



PERSONNEL TITLE PERSONNEL TITLE

Red Beach
Newcomb
Knape

COUNTY Williams DATE Apr. 1974

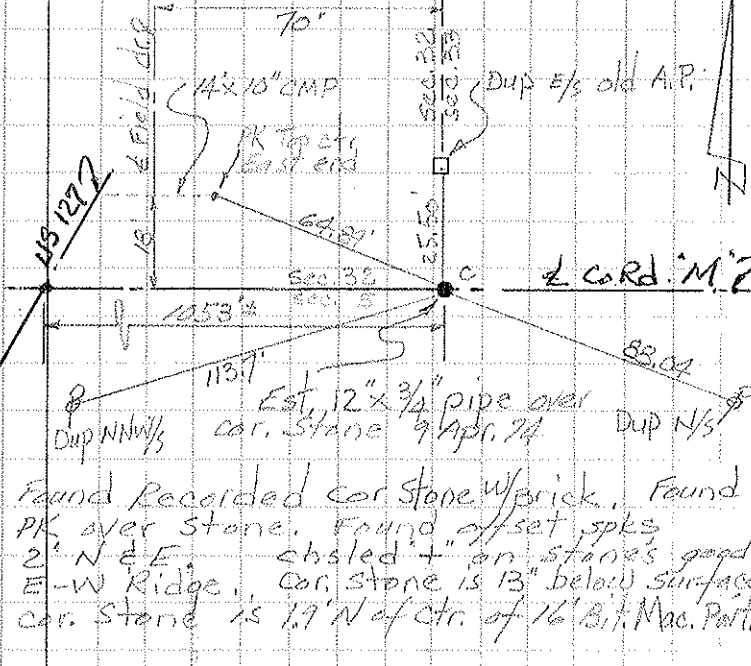
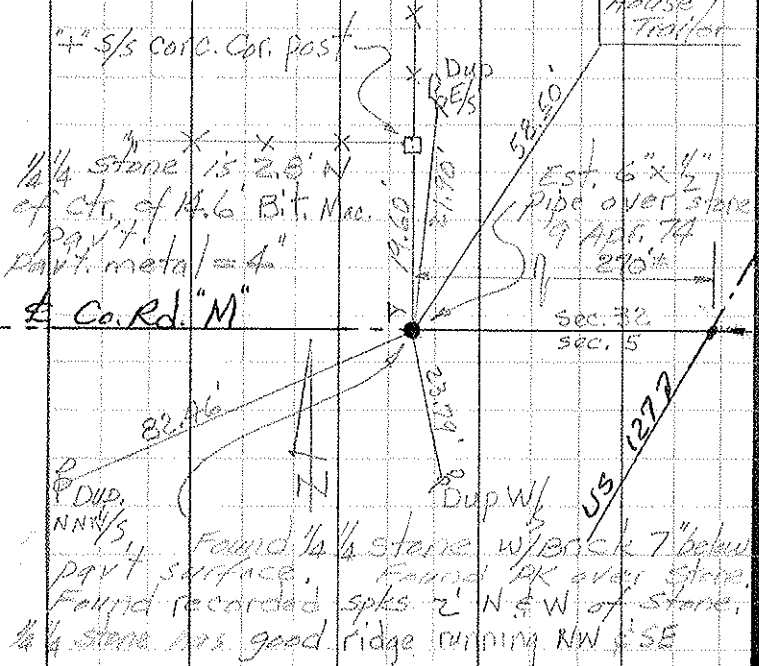
S. R. US 127 WEATHER _____

SEC. Brady Twp. TEMP _____

DESCRIPTION CONTROL POINTS LEFT CENTER LINE RIGHT JOB NO. _____

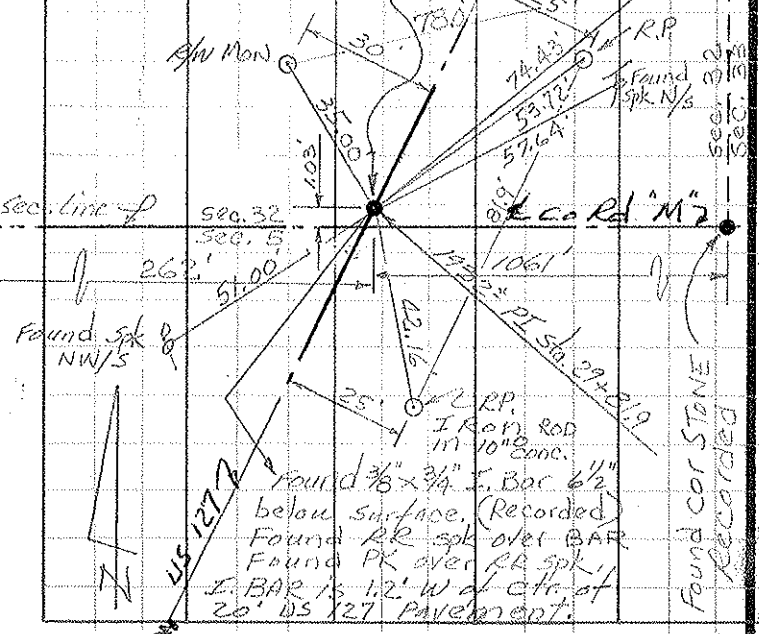
SW Cor. E 1/2, SE 1/4 Sec. 32 T-8-N R-4-E
BRADY TWP

SE Cor. Sec 32 T-8-N R-4-E
SW Cor. Sec 33 BRADY TWP.



RT. Sta. 29 + 81.9 used as control for Highway easement July 1932. See Vol. 136 p. 212 Wms Co. Recorder.

Est. 6" x 3/4" pipe over the recorded I. BAR 10 Apr. 1974



Co. Surv. HODDLE's 1899 POINT "B" SURV. 4 109

