

O.D.O.T. DISTRICT 2 SURVEY OFFICE (USE ONLY)

PERSONNEL

REFERENCE NO. 32

SHEET 4 OF 32

NOTES LEU
 H.C. LEU
 R.C. TODD

DATE 10/24/16
 WEATHER CLOUDY
 TEMP. 46°

ROUTE US 127
 COUNTY WILLIAMS
 TOWNSHIP BRADY
 SECTION 32

DWG BY MILLER PID 95864

T 8 N R 4 E

TYPE MONUMENT MAG/WASHER

ON SURFACE - ~~BELOW~~ ON

OFFSET \odot PAVEMENT 2.0' LT : ~~RT~~

- TO - EDGE PAVEMENT

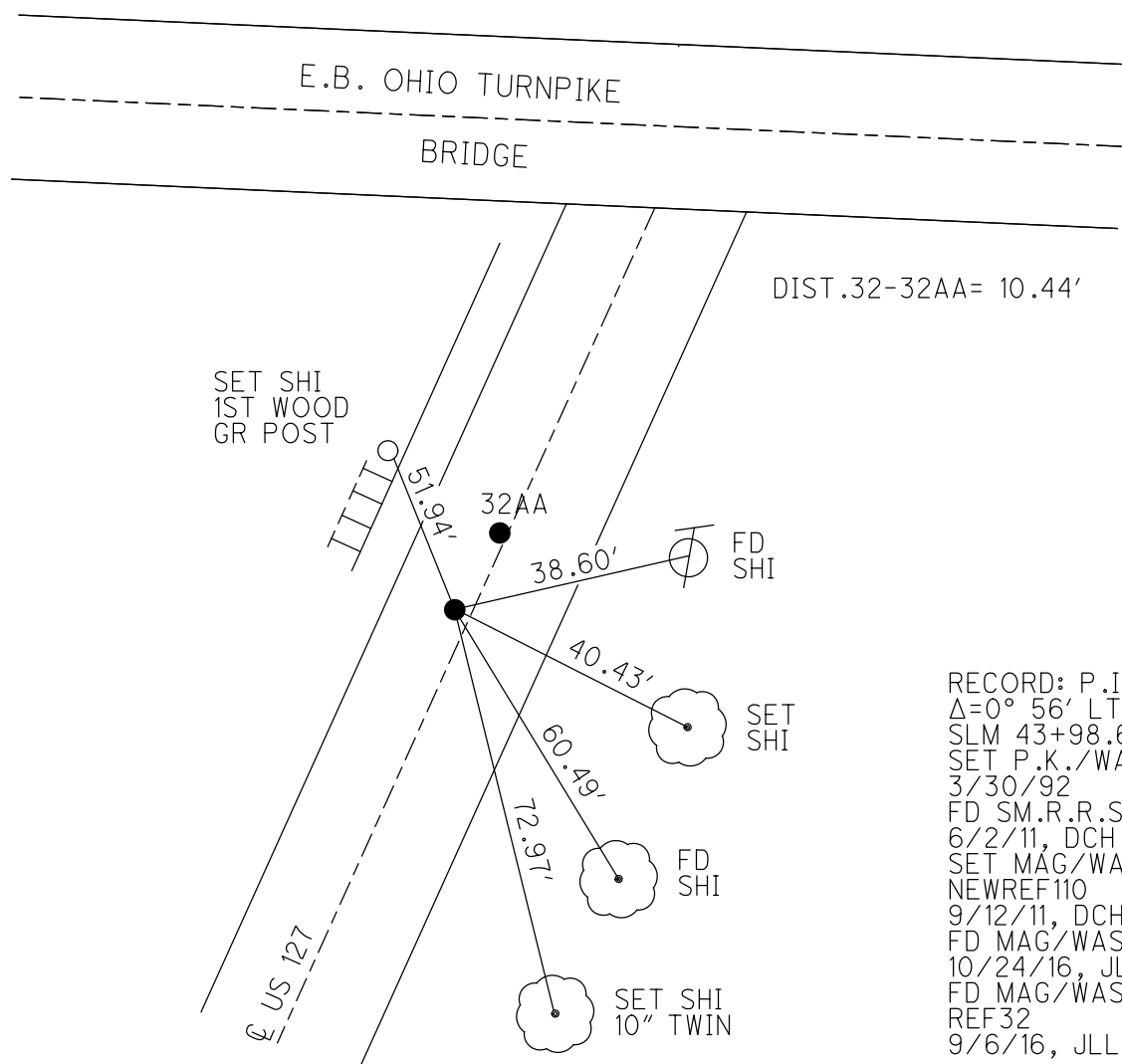
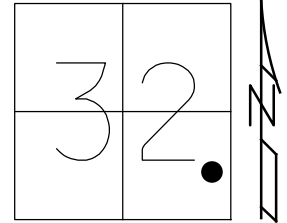
STATION: 840+48.80

HORZ.DATUM: NAD83 (2011)

GEOID: GEOID 2012A

GRID: NORTHING: 711846.159

EASTING: 1443103.104

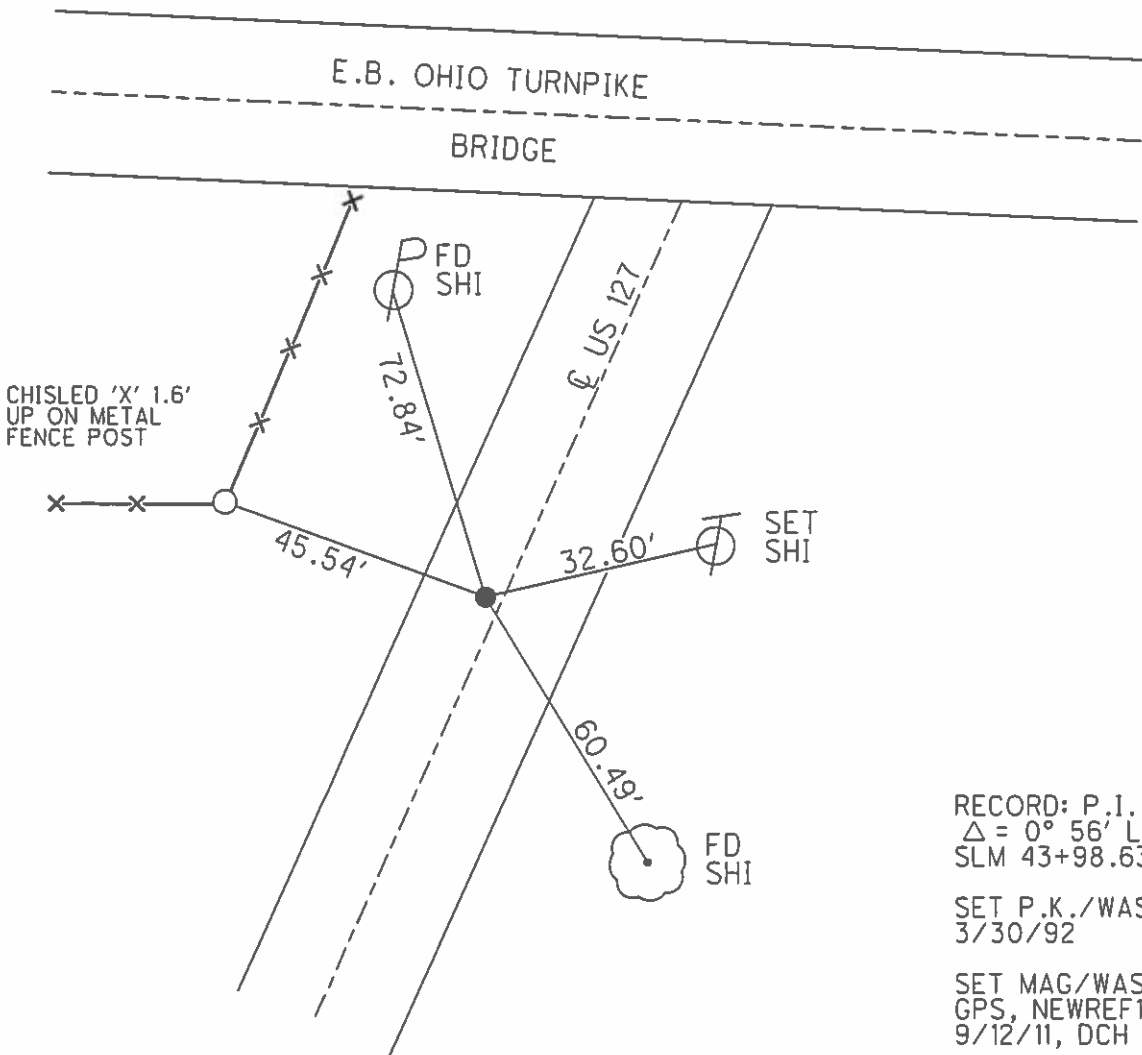
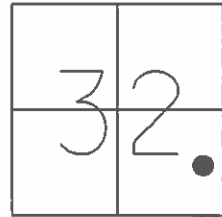


RECORD: P.I.
 $\Delta=0^{\circ} 56' LT$
 SLM 43+98.63
 SET P.K./WASHER
 3/30/92
 FD SM.R.R.SPIKE
 6/2/11, DCH
 SET MAG/WASHER
 NEWREF110
 9/12/11, DCH
 FD MAG/WASHER
 10/24/16, JLL
 FD MAG/WASHER
 REF32
 9/6/16, JLL

O.D.O.T. DISTRICT 2 SURVEY OFFICE (USE ONLY)

PERSONNEL _____ REFERENCE NO. 32 SHEET 4 OF 31
 NOTES ROUSOS DATE 6/20/11 ROUTE US 127
 H.C. HARBUAGH WEATHER CLOUDY COUNTY WILLIAMS
 R.C. HOMAN TEMP. 72°F TOWNSHIP BRADY
 _____ SECTION 32
 _____ T 8 N R 4 E

TYPE MONUMENT SM.R.R.SPIKE
 ON SURFACE - ~~BELOW~~ ON _____
 LEFT - Q PAV'T - ~~RIGHT~~ 2.0'
 _____ TO _____ EDGE PAVEMENT
 S.L.M. 840+48.80
 GRID: NORTHING: 711805.256 EASTING: 1443020.100



PERSONNEL TITLE PERSONNEL TITLE

Red Beach
W. Knape

COUNTY Williams

DATE Apr.-May '74

S. R. US 127

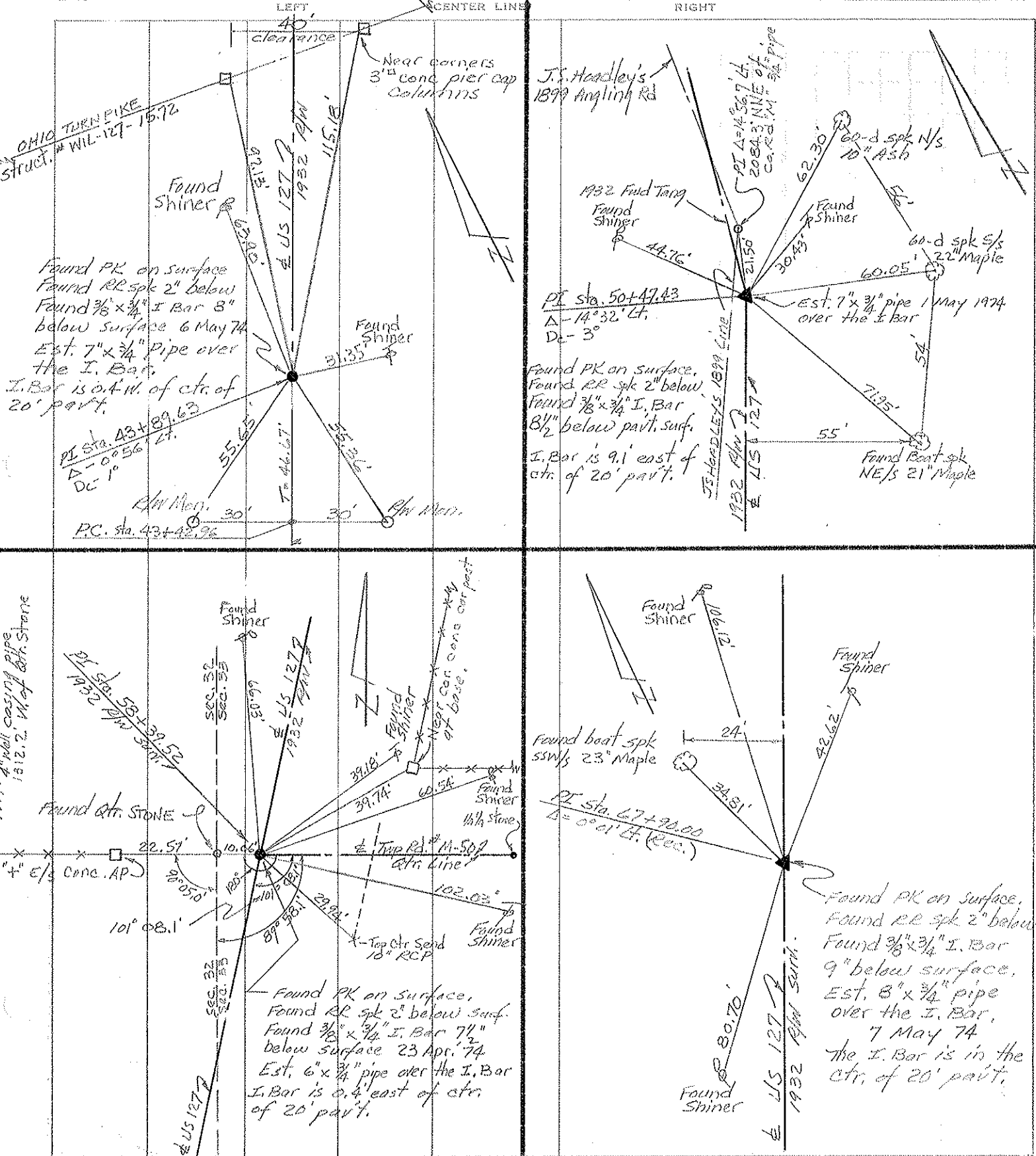
WEATHER

SEC. Brady Sec. 32-33 T-8-N TEMP

DESCRIPTION

CONTROL POINTS

JOB NO.



OHIO TURN PIKE
STRUCT. # WIL-127-15-72

Found Shiner

Found PK on surface
Found RR spk 2" below
Found 3/8" x 3/4" I. Bar 8"
below surface 6 May 74
Est. 7" x 3/4" pipe over
the I. Bar.
I. Bar is out W. of ctr. of
20' part.

PI Sta. 43+49.63
Δ - 0° 56' Lt.
DC - 1°

PC Sta. 43+42.36

Found Shiner

J.S. Handley's
1899 Angling Rd

1932 Ford Tang
Found Shiner

PI Sta. 50+47.43
Δ - 14° 32' Lt.
DC - 3°

Found PK on surface.
Found RR spk 2" below.
Found 3/8" x 3/4" I. Bar
8 1/2" below part. surf.
I. Bar is 9.1' east of
ctr. of 20' part.

Found Boat spk
NE/S 21' Maple

1/4" Post
4" wall casing pipe
1812.2' W. of qtr. stone

Found qtr. stone

10' 08.1'

Found PK on surface.
Found RR spk 2" below surf.
Found 3/8" x 3/4" I. Bar 7 1/2"
below surface 23 Apr. 74
Est. 6" x 3/4" pipe over the I. Bar
I. Bar is 0.4' east of ctr.
of 20' part.

Found boat spk
SSW/S 23" Maple

PI Sta. 67+90.00
Δ - 0° 01' Lt. (Rec.)

Found PK on surface.
Found RR spk 2" below
Found 3/8" x 3/4" I. Bar
9" below surface.
Est. 8" x 3/4" pipe
over the I. Bar.
7 May 74
The I. Bar is in the
ctr. of 20' part.

Qtr. Line
S. 89° 44.0' E.

LEGEND

- A - Found recorded 1/4 Sec. STONE.
 - B - Made diligent search for recorded 1/4 Sec. STONE - Did not find. Used 4" stl. well casing pipe being used as an A.P. in E-W fence line.
 - C - Found recorded Qtr. STONE. (E. Qtr. post Sec. 32 T-8-N)
 - D - Found recorded sec. cor. STONE (SE Cor. Sec. 32)
 - F, G, H, J - Found recorded control points (3/8" x 3/4" Bars) on E 1932 1/4 W line.
 - N - Found recorded 1/4 Sec. STONE 1321.3' east of Qtr. STONE "C"
 - L - A point recorded as 1462.9' north of "A"
 - M - A point recorded as 1388.35' north of "D"
 - I - A point on line HJ that intersects Sec. Line DC
 - E - Extended line GF southwesterly to intersect Sec Line AD
 - K - J.S. Hoodley, Co. Surveyor, planted STONE in 1899 on line AED 270' east of STONE A - Made diligent search - Did not find. STONE manifestly lost in 1932 grading operation.
- Line AB computes 2633.32'
 Line BC measures 1312.2'
 Line CD computes 2632.93'
 Line AD measures 1327.5'
 Line FG recorded as 1407.73'
 Line GH recorded as 657.81'
 Line HJ recorded as 794.61'
 Line EFG meas. 1402.88'
 Line CJ on line CN meas. 10.06'

1/4 Sec. Line

N. 0° 24.3' E.

T.P. 19W 7

E CHIO TURNPIKE

T.P. 19W 8

- Line AE meas. 261.49' on line AEKD
- Line EF meas. 1.15' on line EFG
- Line EK meas. 8.51' on line AEKD
- Line CI meas. 50.97' on line CID
- Line IT comp. 51.95' on line HIJ
- Line CJ meas. 10.06' on line CJN
- Point F recorded as PI sta. 29+81.9
- Point J recorded as PI sta. 58+39.52

E 1/2 SE 1/4 Sec. 32 T-8-N R.L.F.
 BRADY TWP.
 computes 79.6271 Ac

Red Beach
 C. Newcomb
 W. Knappe
 Apr - May 1974

E 1/2 1899 Survey - Wm. Co. Sur.
 Used in 1963 & 1971 land surveys

E. Co. Red. "M"
 Sec. Line

Sec. 32
 Sec. 5

Sec. 32
 Sec. 53

Sec. Line

PI sta. 50+47.43 Dc=3°00'
 Δ-14°32' Lt. Recorded
 Δ- Measures 14°32.6 Lt.

PI sta. 43+89.63 Dc=1°00'
 Δ-0°56' Lt. Recorded
 Δ- Measures 0°56.4 Lt.

N. 11° 21.0' E.

N. 25° 53.6' E.

S. 0° 11.0' W.

S. 89° 47.1' E.

E. Twp Rd. #1-50

B

C

A

D