

O.D.O.T. DISTRICT 2 SURVEY OFFICE (USE ONLY)

PERSONNEL

REFERENCE NO. 32 A

SHEET 6 OF 32

NOTES ROUSOS

DATE 6/20/11

ROUTE US 127

H.C. HARBUAGH

WEATHER CLOUDY

COUNTY WILLIAMS

R.C. HOMAN

TEMP. 72°

TOWNSHIP BRADY

SECTION 32

DWG BY MILLER PID 95864

T 8 N R 4 E

TYPE MONUMENT P.K.NAIL

ON SURFACE - ~~BELOW~~ ON

OFFSET 0 PAVEMENT -- ~~LT~~ : RT

ON TO RT EDGE PAVEMENT

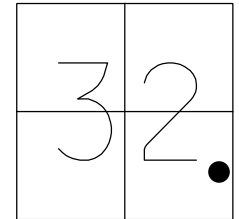
STATION: 847+16.71

HORZ.DATUM: NAD83 (2011)

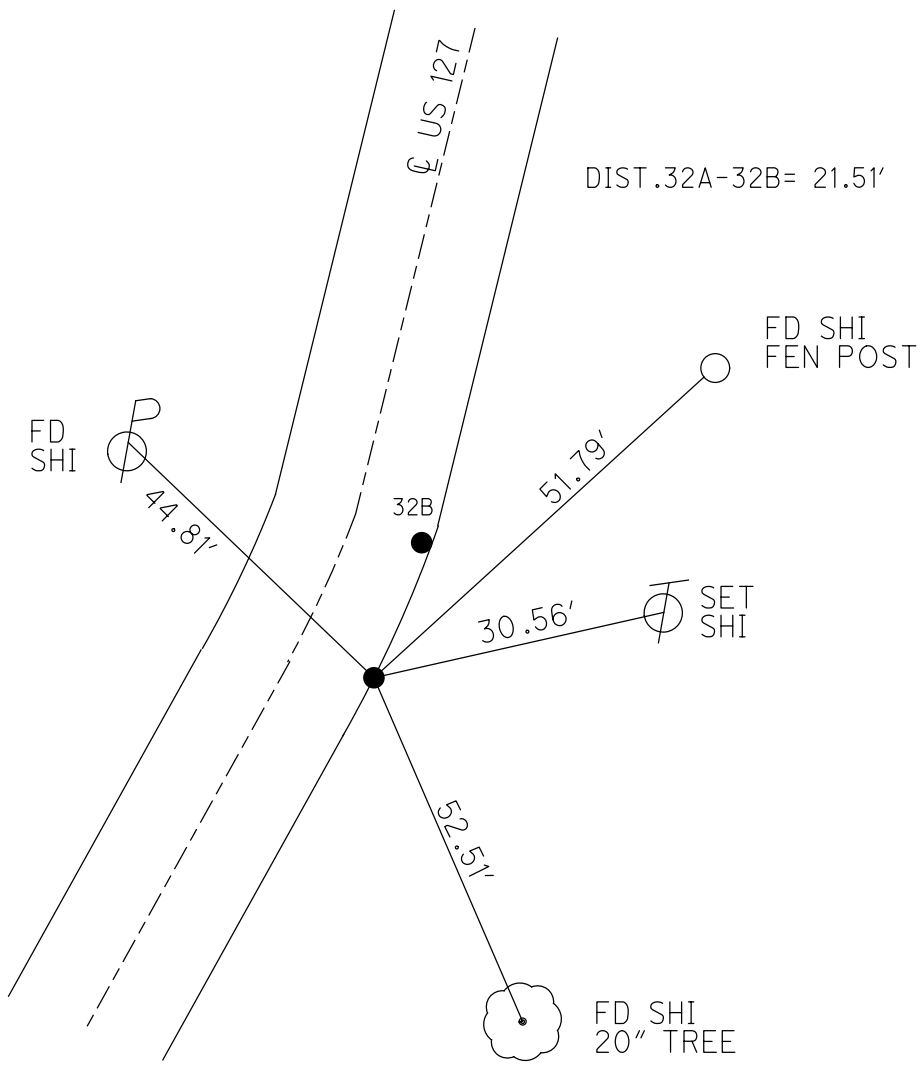
GEOID: GEOID 2012A

GRID: NORTHING: 712443.307

EASTING: 1443403.283



RECORD: P.I.  
 $\Delta=14^{\circ} 32' LT$   
 $D=3^{\circ} 00'$   
 SLM 50+47.43  
 SET P.K./WASHER  
 3/30/92  
 FD P.K./WASHER  
 6/20/11, DCH  
 SET MAG/WASHER  
 NEWREF111  
 9/12/11, DCH  
 FD MAG/WASHER  
 REFA32  
 9/6/16, JLL

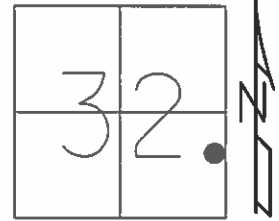


O.D.O.T. DISTRICT 2 SURVEY OFFICE (USE ONLY)

PERSONNEL \_\_\_\_\_ REFERENCE NO. 32 A SHEET 5 OF 31  
 NOTES ROUSOS DATE 6/20/11 ROUTE US 127  
 H.C. HARBUGH WEATHER CLOUDY COUNTY WILLIAMS  
 R.C. HOMAN TEMP. 72° F TOWNSHIP BRADY  
 \_\_\_\_\_ SECTION 32  
 \_\_\_\_\_ T 8 N R 4 E

TYPE MONUMENT P.K.NAIL  
 ON SURFACE - ~~BELOW~~ ON \_\_\_\_\_  
~~LEFT~~ - Q PAV'T - RIGHT \_\_\_\_\_  
 ON TO RT EDGE PAVEMENT \_\_\_\_\_  
 S.L.M. 847+16.71

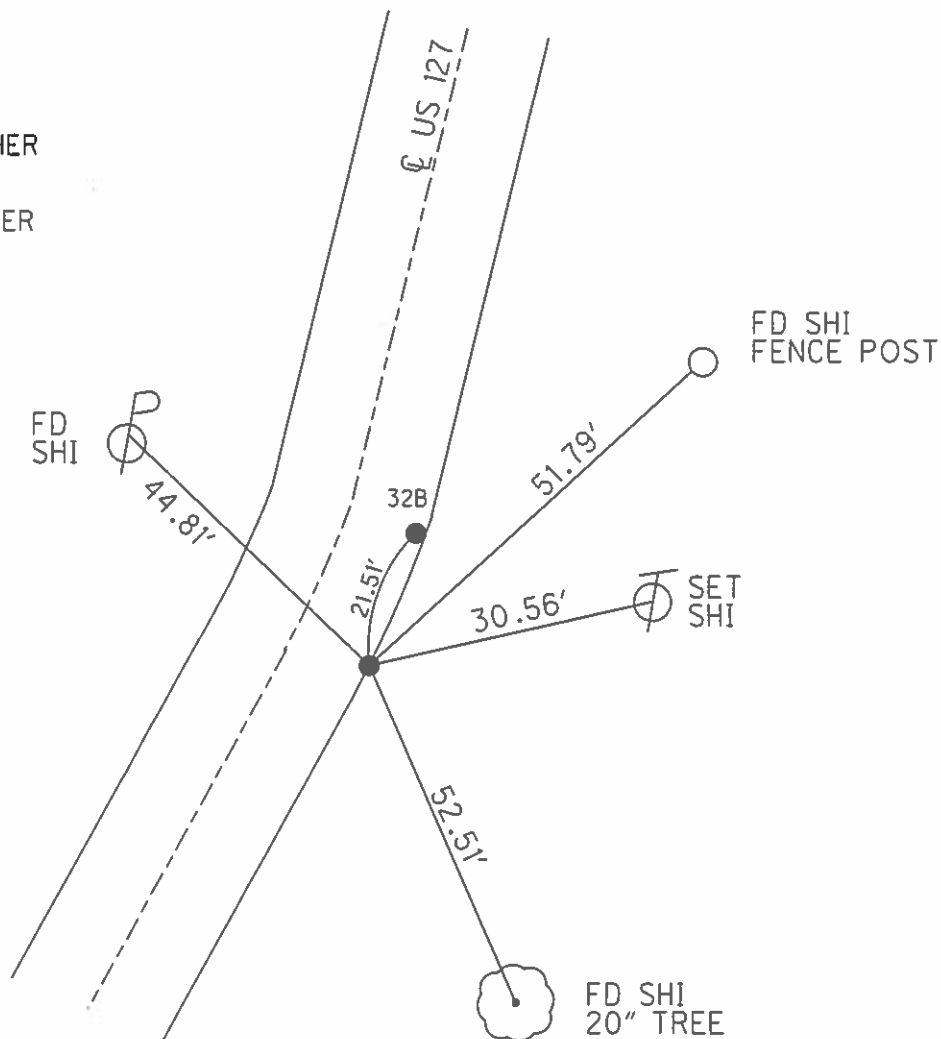
GRID: NORTHING: 712402.399 EASTING: 1443320.221



RECORD: P.I.  
 $\Delta = 14^{\circ}32'$  LT  
 $D = 3^{\circ}00'$   
 SLM 50+47.43

SET P.K./WASHER  
 3/30/92

SET MAG/WASHER  
 GPS, NEWREF111  
 9/12/11, DCH



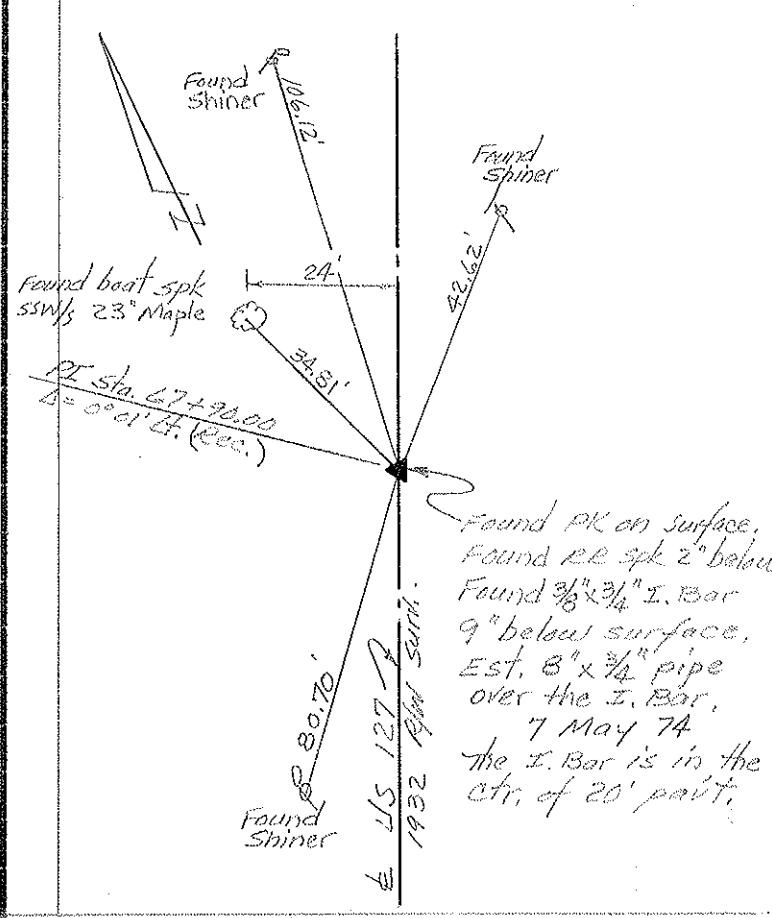
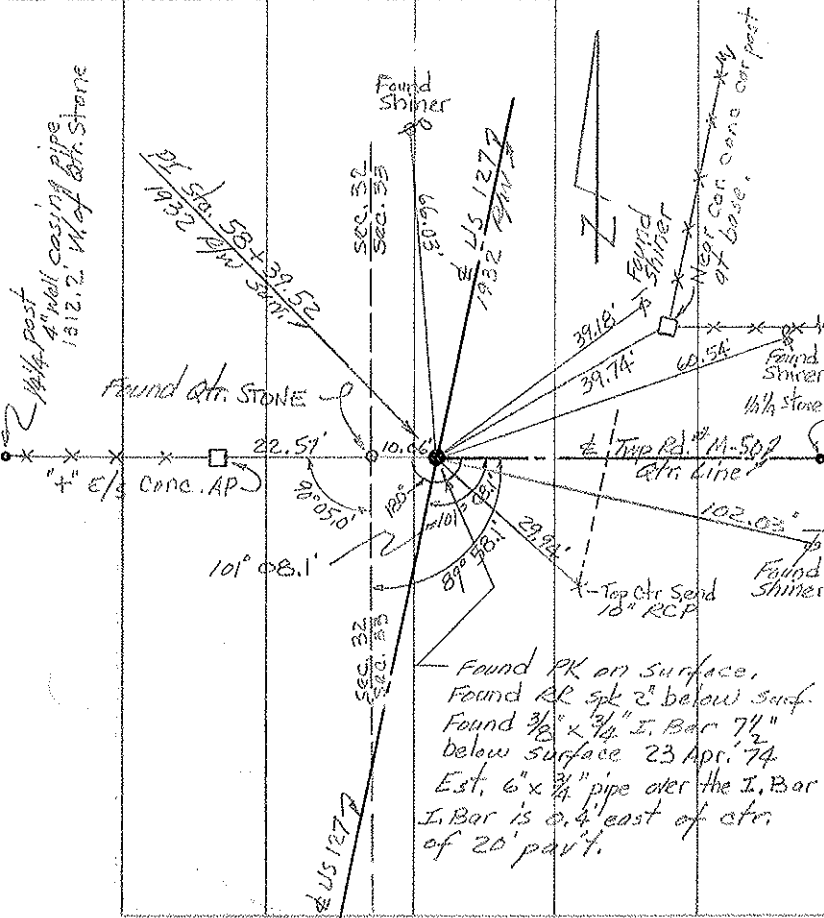
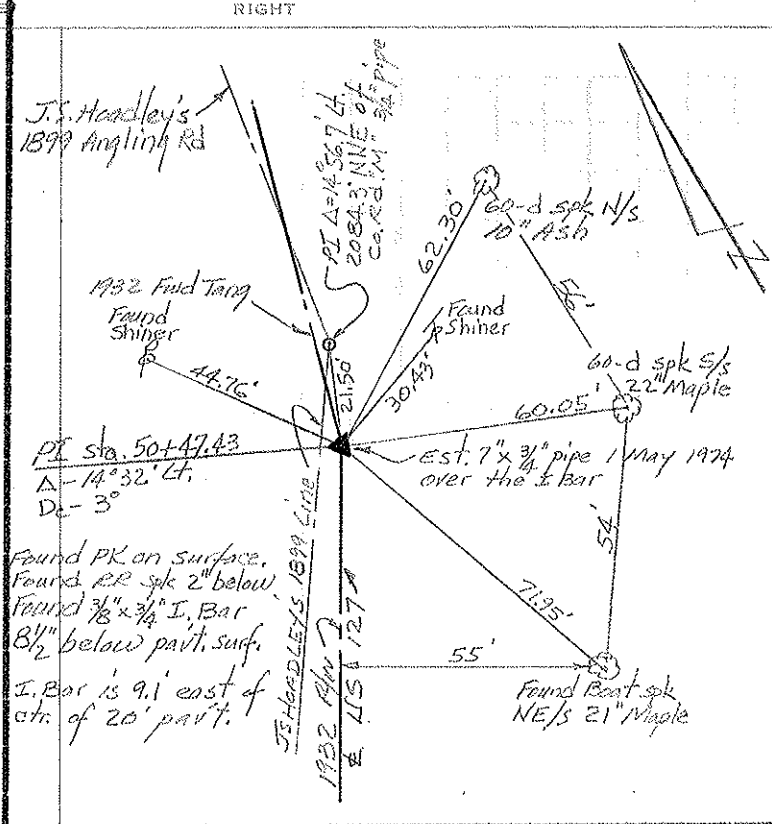
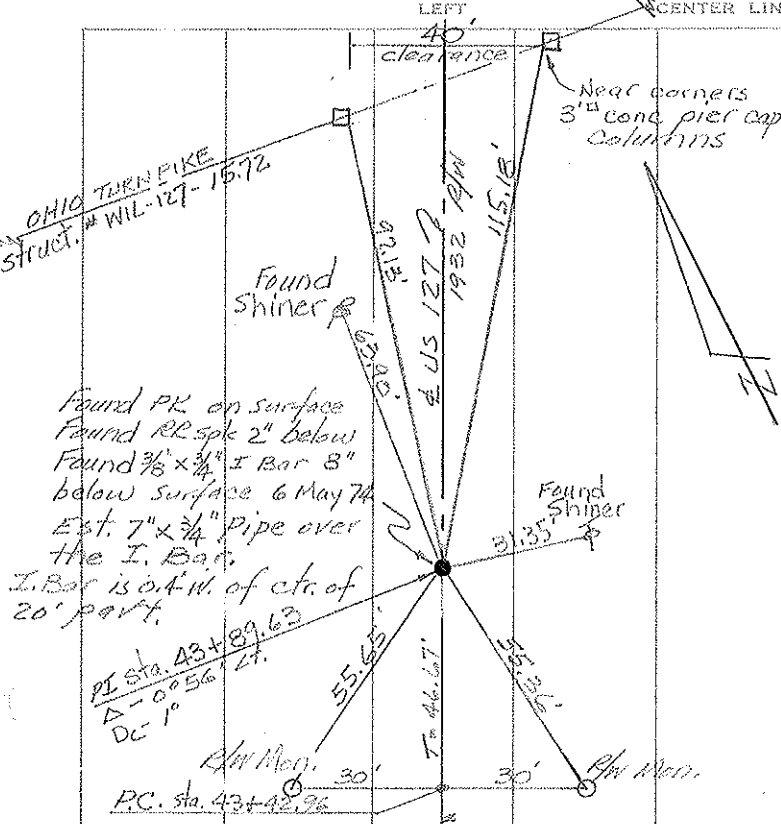
PERSONNEL TITLE PERSONNEL TITLE  
Red Beach  
W. Knape

COUNTY Williams DATE Apr.-May '74

S. R. US 127 WEATHER

SEC. Brady Sec. 32-33 T-8-N TEMP

DESCRIPTION CONTROL POINTS JOB NO.



PERSONNEL TITLE PERSONNEL TITLE

Red Beach  
W. Knape

COUNTY Williams

DATE May 1974

S. R. US 127

WEATHER \_\_\_\_\_

SEC. 32-33 Bady T-8-N TEMP. \_\_\_\_\_

DESCRIPTION J.S. Headley's 1899 Angling Rd. Survey (Reconstructed)

