

O.D.O.T. DISTRICT 2 SURVEY OFFICE (USE ONLY)

PERSONNEL

REFERENCE NO. 33 C

SHEET 10 OF 32

NOTES ROUSOS
 H.C. HARBUAGH
 R.C. HOMAN

DATE 6/20/11
 WEATHER CLOUDY
 TEMP. 72°

ROUTE US 127
 COUNTY WILLIAMS
 TOWNSHIP BRADY
 SECTION 32

DWG BY MILLER PID 95864

T 8 N R 4 E

TYPE MONUMENT IPIN

ON SURFACE - ~~BELOW~~ ON

OFFSET Q PAVEMENT ON LT : RT

- TO - EDGE PAVEMENT

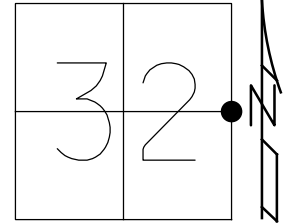
STATION: 855+11.54

HORZ.DATUM: NAD83 (2011)

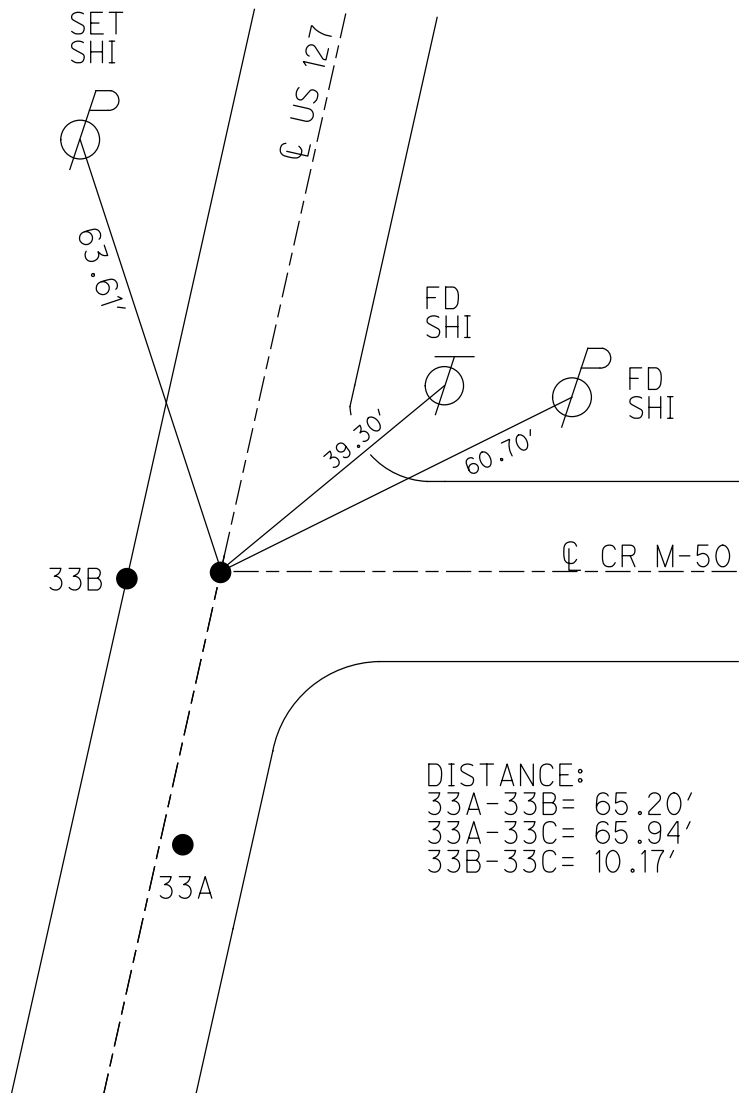
GEOID: GEOID 2012A

GRID: NORTHING: 713220.602

EASTING: 1443568.825



RECORD: P.I.
 $\Delta=0^{\circ} 44' LT$
 STA=58+39.52
 FD SM.R.R. SPIKE
 SET P.K./WASHER
 3/30/92
 FD P.K./WASHER
 6/22/11, DCH
 SET MAG/WASHER
 NEWREF113
 9/23/11, DCH
 FD MAG/WASHER
 REFC33
 9/6/16, JLL



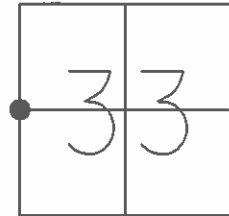
DISTANCE:
 33A-33B= 65.20'
 33A-33C= 65.94'
 33B-33C= 10.17'

O.D.O.T. DISTRICT 2 SURVEY OFFICE (USE ONLY)

PERSONNEL _____ REFERENCE NO. 33 C SHEET 9 OF 31
 NOTES ROUSOS DATE 6/22/11 ROUTE US 127
 H.C. HARBUAGH WEATHER CLOUDY COUNTY WILLIAMS
 R.C. HOMAN TEMP. 58° F TOWNSHIP BRADY
 _____ SECTION 33
 _____ T 8 N R 4 E

TYPE MONUMENT P.K.NAIL
 ON SURFACE - ~~BELOW~~ ON _____
 LEFT - Q PAV'T - RIGHT ON _____
 - TO - EDGE PAVEMENT
 S.L.M. 855+11.54

GRID: NORTHING: 713179.719 EASTING: 1443485.754

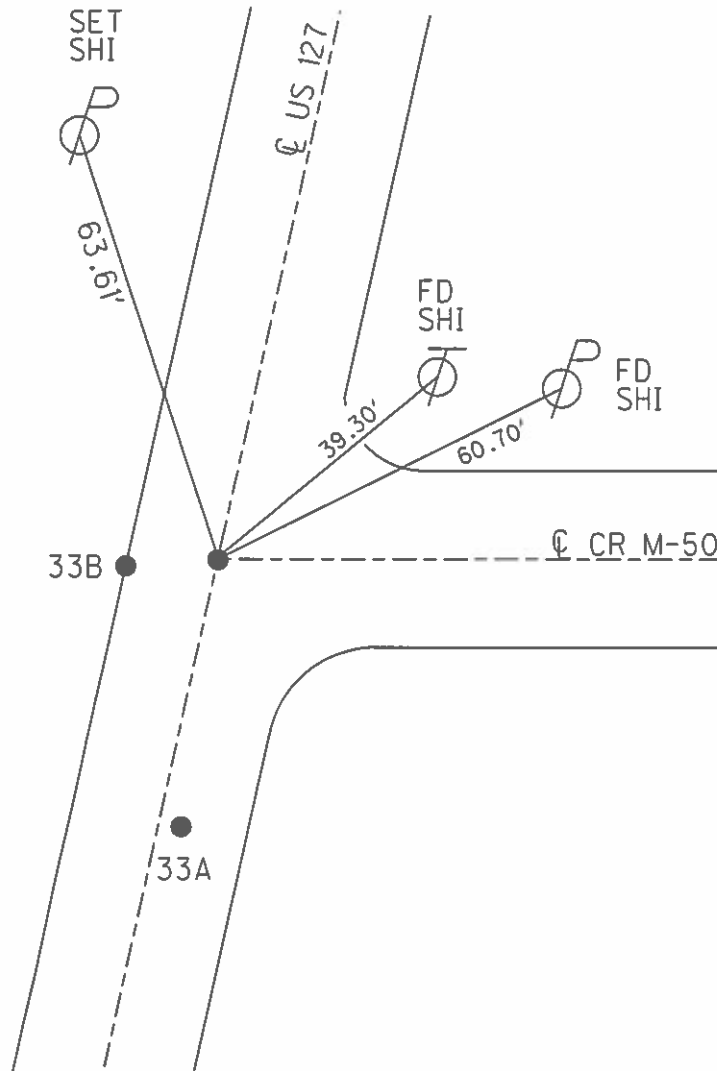


RECORD: P.I.
 $\Delta = 0^{\circ}44' LT$
 STA= 58+39.52
 FD SM.R.R.SPIKE

SET P.K./WASHER
 3/30/92

SET MAG/WASHER
 GPS, NEWREF113
 9/23/11, DCH

DISTANCE:
 33A-33B= 65.20'
 33A-33C= 65.94'
 33B-33C= 10.17'



PERSONNEL TITLE PERSONNEL TITLE

Red Beach
W. Knappe

COUNTY Williams

DATE Apr.-May '74

S. R. US 127

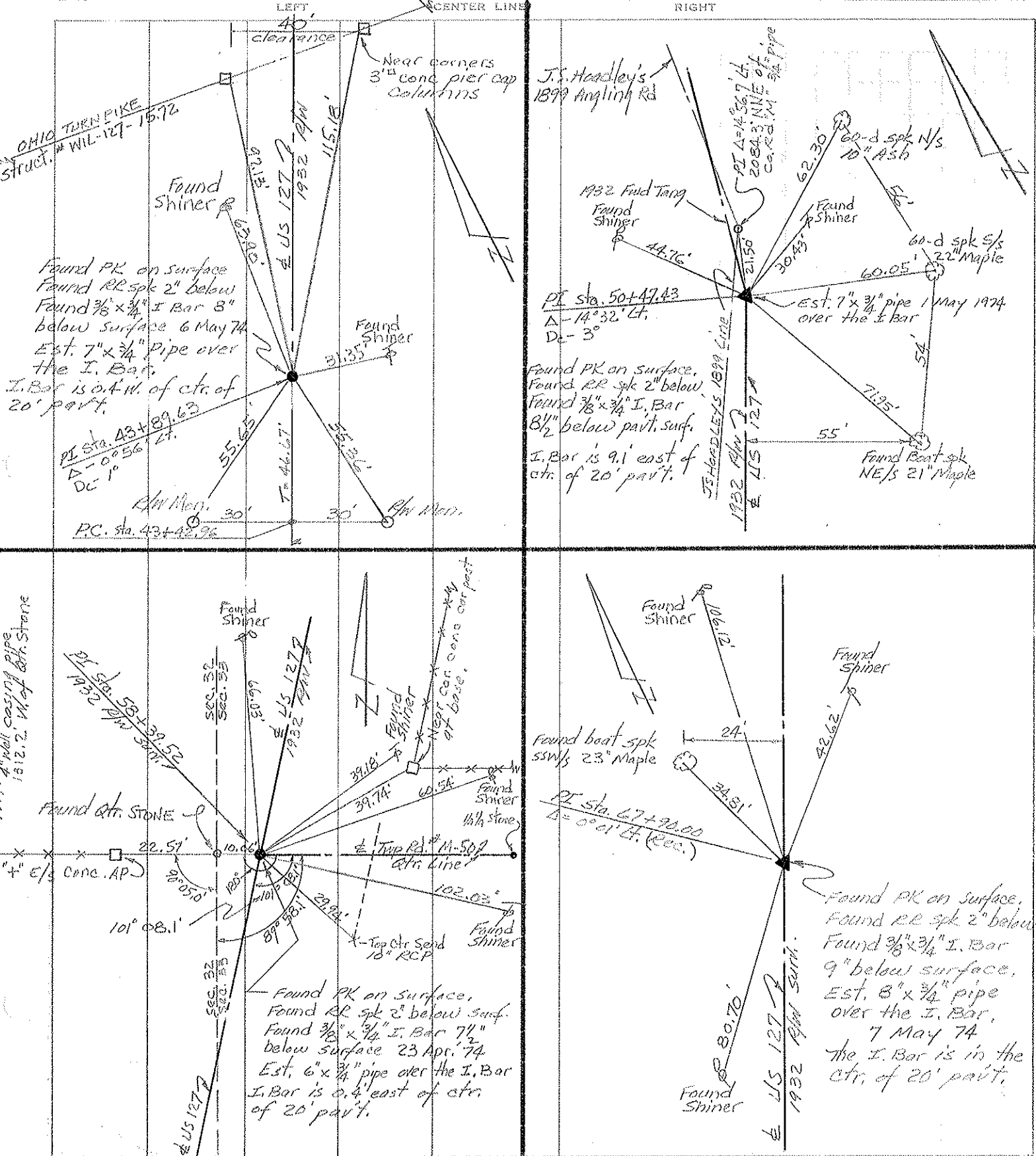
WEATHER

SEC. Brady Sec. 32-33 T-8-N TEMP

DESCRIPTION

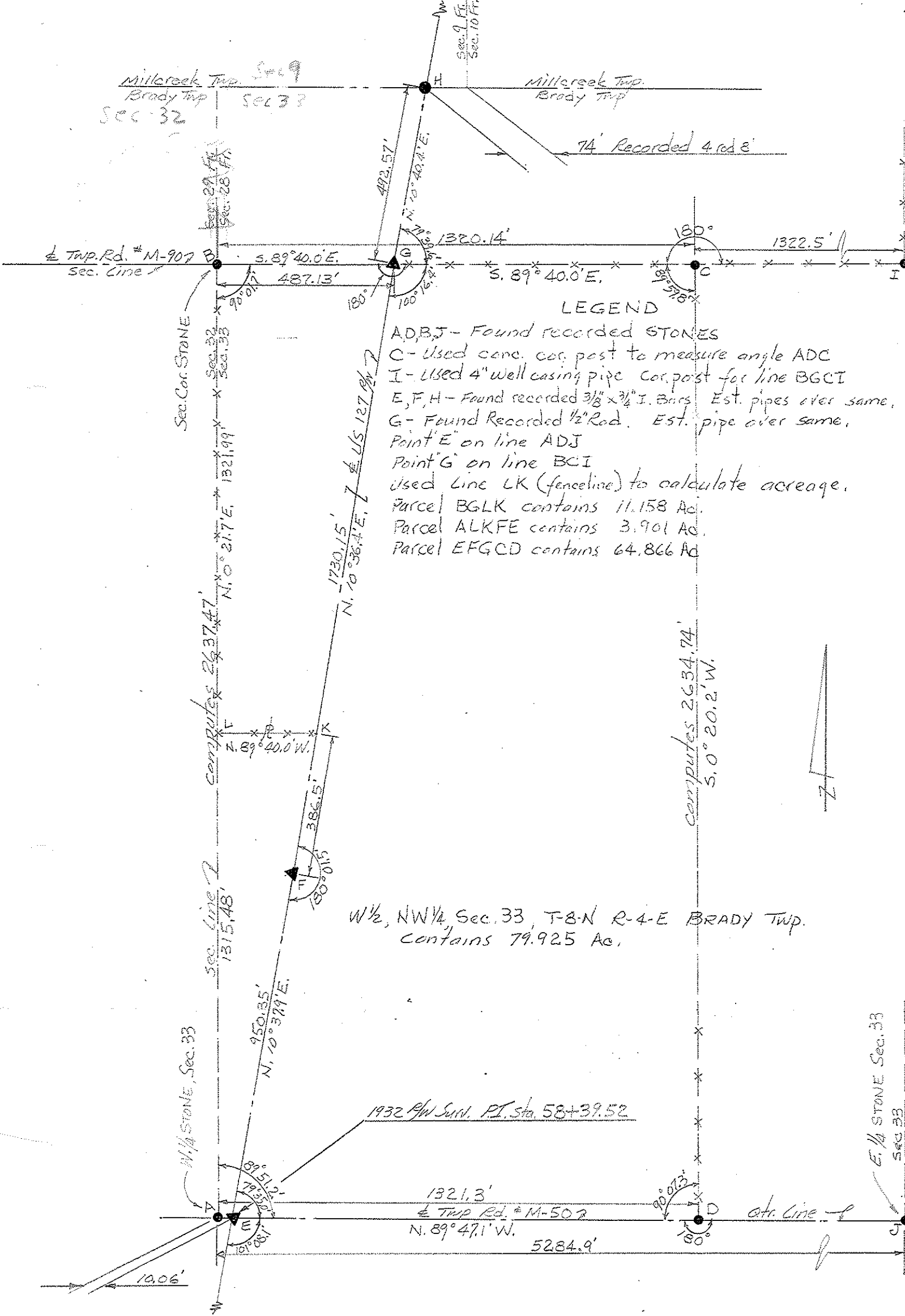
CONTROL POINTS

JOB NO.



PERSONNEL	TITLE	PERSONNEL	TITLE
Red Beach			
W. Knape			

COUNTY Williams DATE MAY 1974
 S. R. US 127 WEATHER _____
 SEC. _____ TEMP. _____
 DESCRIPTION W 1/2, NW 1/4, Sec. 33 T-8-N R-4-E BRADY TWP. JOB NO. _____



LEGEND

- ADBJ - Found recorded STONES
- C - Used conc. cor. post to measure angle ADC
- I - Used 4" well casing pipe cor. post for line BICI
- E, F, H - Found recorded 3/8 x 3/4" I. Bars Est. pipes over same.
- G - Found Recorded 1/2" Rod. Est. pipe over same.
- Point E on line ADJ
- Point G on line BCI
- used line LK (fence line) to calculate acreage.
- Parcel BGLK contains 11.158 Ac.
- Parcel ALKFE contains 3.901 Ac.
- Parcel EFGCD contains 64.866 Ac.

W 1/2, NW 1/4 Sec. 33, T-8-N R-4-E BRADY TWP.
 Contains 79.925 Ac.

1932 Pl/W Surv. P.I. Sta 58+39.52

E 1/4 Stone Sec. 33
 Sec. 33
 Sec. 34

Qtr. Line
S. 89° 44.0' E.

LEGEND

- A - Found recorded 1/4 Sec. STONE.
 - B - Made diligent search for recorded 1/4 Sec. STONE - Did not find. Used 4" stl. well casing pipe being used as an A.P. in E-W fence line.
 - C - Found recorded Qtr. STONE. (E. Qtr. post Sec. 32 T-8-N)
 - D - Found recorded sec. cor. STONE (SE Cor. Sec. 32)
 - F, G, H, J - Found recorded control points (3/8" x 3/4" Bars) on E 1932 1/4 W line.
 - N - Found recorded 1/4 Sec. STONE 1321.3' east of Qtr. STONE "C"
 - L - A point recorded as 1462.9' north of "A"
 - M - A point recorded as 1388.35' north of "D"
 - I - A point on line HJ that intersects Sec. Line DC
 - E - Extended line GF southwesterly to intersect Sec Line AD
 - K - J.S. Hoodley, Co. Surveyor, planted STONE in 1899 on line AED 270' east of STONE A - Made diligent search - Did not find. STONE manifestly lost in 1932 grading operation.
- Line AB computes 2633.32'
 Line BC measures 1312.2'
 Line CD computes 2632.93'
 Line AD measures 1327.5'
 Line FG recorded as 1407.73'
 Line GH recorded as 657.81'
 Line HJ recorded as 794.61'
 Line EFG meas. 1402.88'
 Line CJ on line CN meas. 10.06'

1/4 Sec. Line

N. 0° 24.3' E.

T.P. 19W 7

E CHIO TURNPIKE

T.P. 19W 8

- Line AE meas. 261.49' on line AEKD
- Line EF meas. 1.15' on line EFG
- Line EK meas. 8.51' on line AEKD
- Line CI meas. 50.97' on line CID
- Line IT comp. 51.95' on line HIJ
- Line CJ meas. 10.06' on line CJN
- Point F recorded as PI sta. 29+81.9
- Point J recorded as PI sta. 58+39.52

E 1/2 SE 1/4 Sec. 32 T-8-N R.L.E.
 BRADY TWP.
 computes 79.6271 Ac

Red Beach
 C. Newcomb
 W. Knappe
 Apr - May 1974

1/4 US 127 Monumented 1932
 1/4 W line

1/4 Co. Red. "M"
 Sec. Line

Sec. 32
 Sec. 5

PI sta. 50+47.43 Dc=3°00'
 Δ-14°32' Lt. Recorded
 Δ- Measures 14°32.6 Lt.

PI sta. 43+89.63 Dc=1°00'
 Δ-0°56' Lt. Recorded
 Δ- Measures 0°56.4 Lt.

N. 11° 21.0' E.

N. 25° 53.6' E.

S. 0° 11.0' W.

Sec. Line

Sec. 32
 Sec. 53

1/4 Trp Rd. # M-50

S. 89° 47.1' E.

B

C

A

D