

O.D.O.T. DISTRICT 2 SURVEY OFFICE (USE ONLY)

PERSONNEL

REFERENCE NO. 2 B

SHEET 5 OF 34

NOTES ASTON DATE 3-29-24

H.C. RHOADES WEATHER SUNNY

R.C. ASTON TEMP. 46°

ROUTE SR 191

COUNTY WILLIAMS

TOWNSHIP SPRINGFIELD

SECTION 28

DWG BY RHOADES PID PAVETRAIN

T 6 N R 4 E

TYPE MONUMENT MAG/WASHER

ON SURFACE - ~~BELOW~~ ON

OFFSET  $\odot$  PAVEMENT 2.8' ~~LT~~ : RT

7.3' TO RT EDGE PAVEMENT

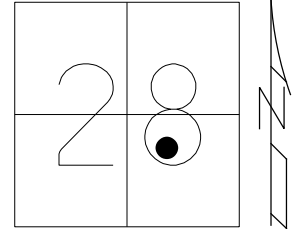
STATION: 21+15

HORZ. DATUM: NAD83 2011

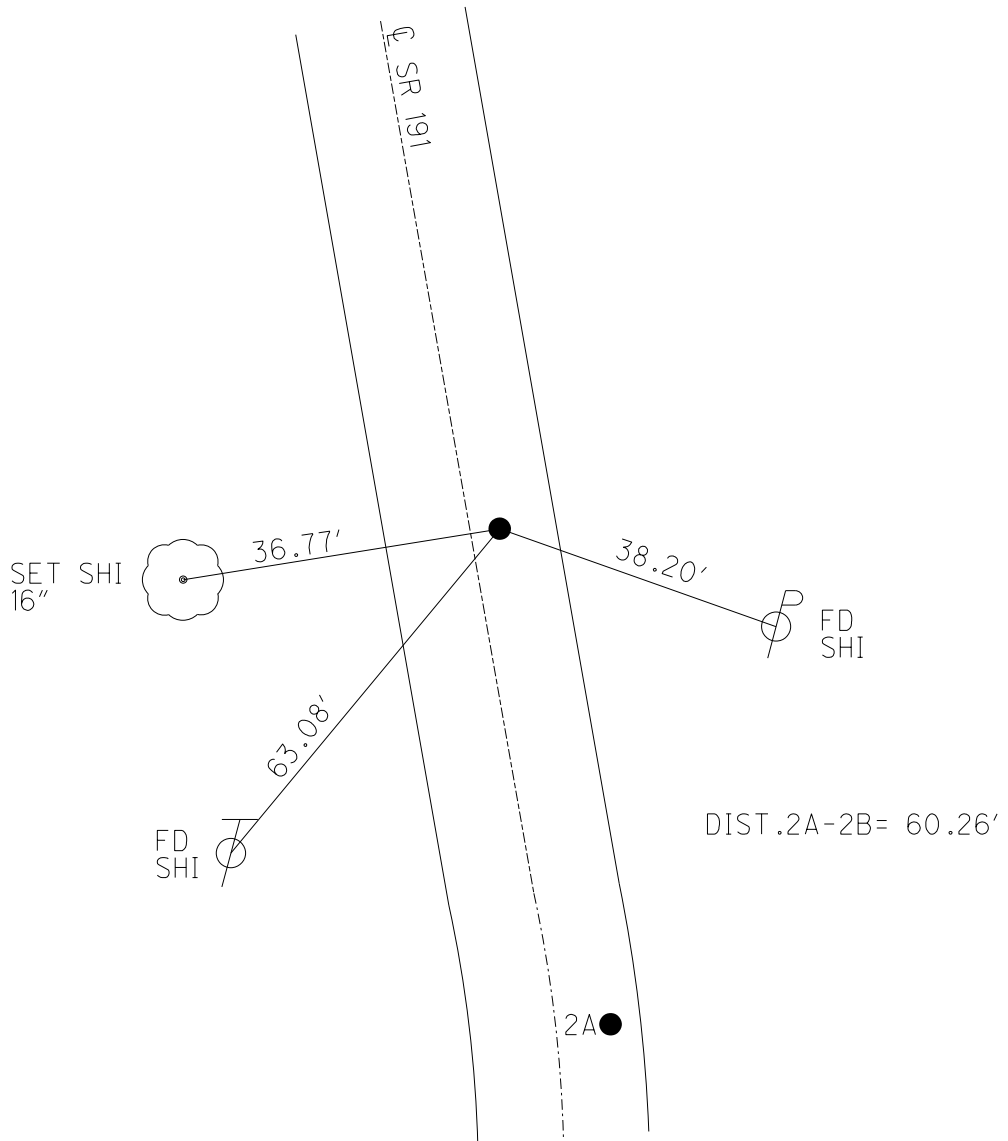
GEOID: NAVD88 2018

GRID: NORTHING: 654563.603

EASTING: 1445929.654



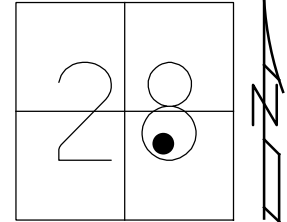
RECORD:  
 FD P.K.NAIL  
 10/3/88, IS  
 SET P.K.NAIL  
 11/27/89, DJC  
 FD P.K.NAIL  
 12/2/04, SAH  
 4/18/06, RGN  
 6/24/11, MC  
 SET MAG/WASHER  
 REFB2  
 2/6/12, SAH  
 FD MAG/WASHER  
 REFB2  
 6/22/22, TDN  
 2/2/23, JMR  
 FD MAG/W  
 3-29-24, JMR



O.D.O.T. DISTRICT 2 SURVEY OFFICE (USE ONLY)

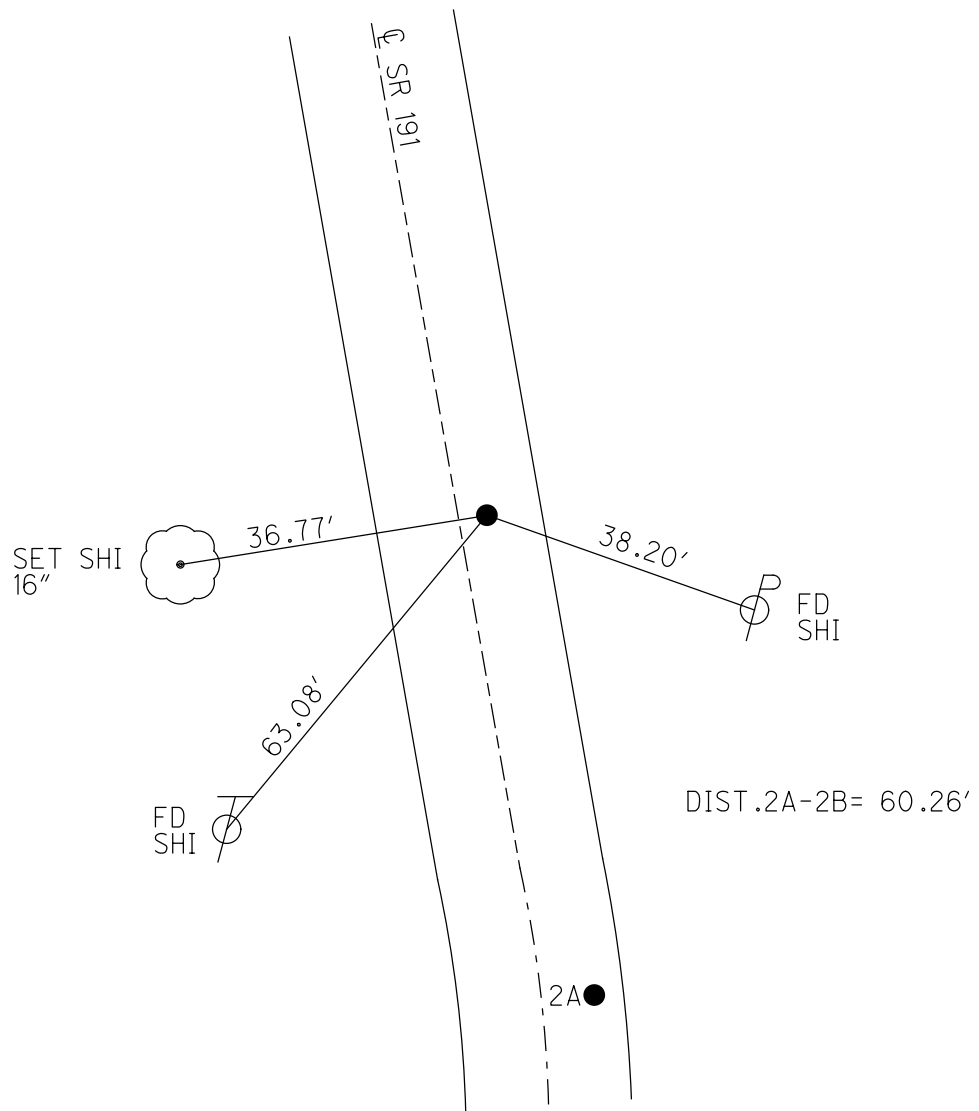
PERSONNEL \_\_\_\_\_ REFERENCE NO. 2 B SHEET 5 OF 34  
 NOTES RHOADES DATE 6/22/22 ROUTE SR 191  
 H.C. NIESE WEATHER SUNNY COUNTY WILLIAMS  
 R.C. WHITAKER TEMP. 83° TOWNSHIP SPRINGFIEND  
 DWG BY RHOADES PID PAVETRAIN SECTION 28  
 T 6 N R 4 E

TYPE MONUMENT MAG/WASHER  
 ON SURFACE - ~~BELOW~~ ON  
 OFFSET ☒ PAVEMENT 2.8' ~~LT~~ : RT  
7.3' TO RT EDGE PAVEMENT  
 STATION: 21+15



HORZ.DATUM: NAD83 2011 GEOID: NAVD88 2018  
 GRID: NORTHING: 654563.603 EASTING: 1445929.654

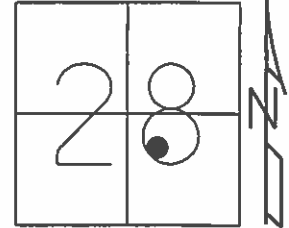
RECORD:  
 FD P.K.NAIL  
 10/3/88, IS  
 SET P.K.NAIL  
 11/27/89, DJC  
 FD P.K.NAIL  
 12/2/04, SAH  
 4/18/06, RGN  
 6/24/11, MC  
 SET MAG/WASHER  
 REFB2  
 2/6/12, SAH  
 FD MAG/WASHER  
 REFB2  
 6/22/22, TDN  
 2/2/23, JMR



O.D.O.T. DISTRICT 2 SURVEY OFFICE (USE ONLY)

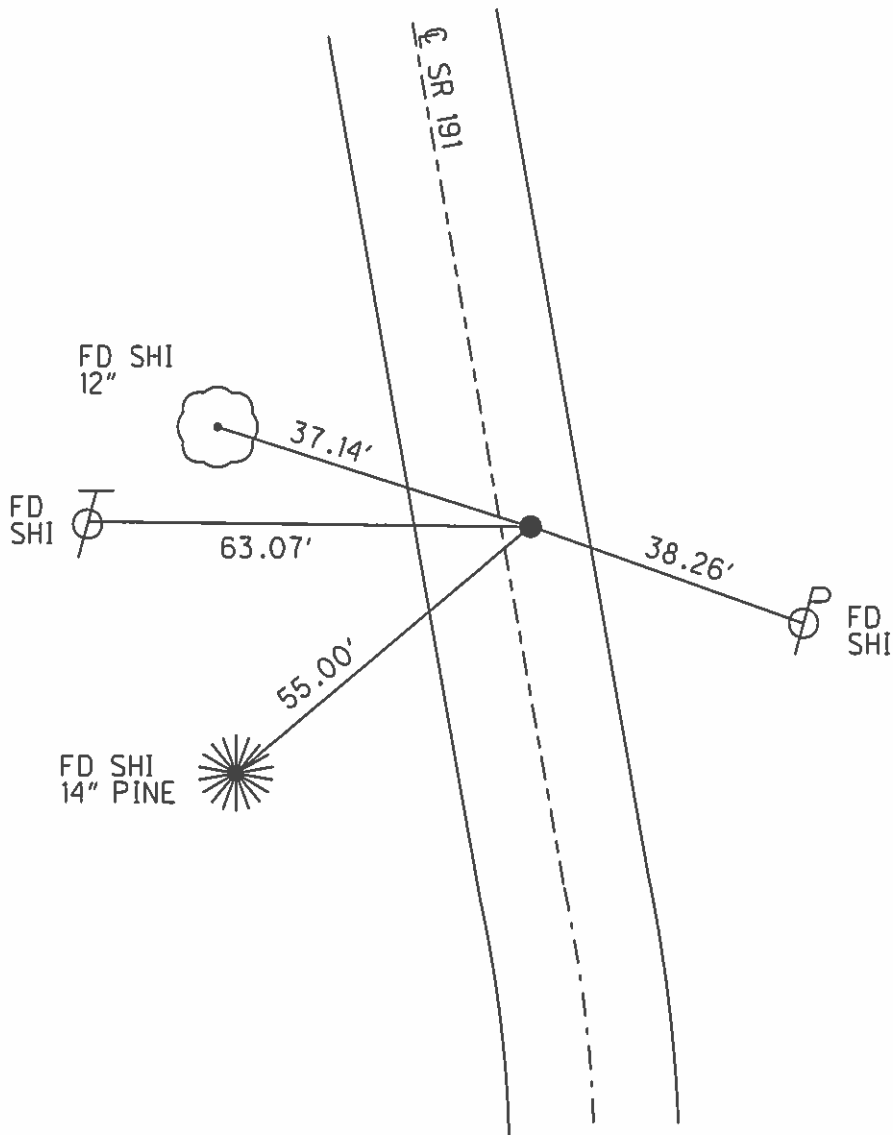
PERSONNEL \_\_\_\_\_ REFERENCE NO. 2 B SHEET 5 OF 34  
 NOTES CANTERBURY DATE 2/6/12 ROUTE SR 191  
 H.C. HUSS WEATHER CLEAR COUNTY WILLIAMS  
 R.C. FINGER TEMP. 39° TOWNSHIP SPRINGFIELD  
 \_\_\_\_\_ SECTION 28  
 \_\_\_\_\_ T 6 N R 4 E

TYPE MONUMENT P.K./WASHER  
 ON SURFACE - ~~BELOW~~ ON \_\_\_\_\_  
~~LEFT~~ - C PAV'T - RIGHT 2.8'  
7.3' TORT EDGE PAVEMENT  
 S.L.M. 21+15



GRID: NORTHING: 654563.570 EASTING: 1445929.600

RECORD:  
 FD P.K.NAIL  
 10/3/88, IS  
 SET P.K.NAIL  
 11/27/89, DJC  
 FD P.K.NAIL  
 12/2/04, SAH  
 4/18/06, RGN  
 6/24/11, MC  
 SET MAG/WASHER  
 GPS, FB2  
 2/6/12, SAH



# O.D.O.T. DISTRICT 2 SURVEY OFFICE

PERSONNEL

REFERENCE NO. 2-B

SHEET 3 OF 7

NOTES 1. Stone

H.C. D. Curtis

R.C. J. Householder

DATE 3 Oct. 88

WEATHER Fair

TEMP. 61°

ROUTE SR#191

COUNTY Williams

TOWNSHIP Springfield

SECTION 28

T      R     

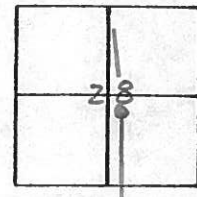
TYPE MONUMENT PK Nail

ON SURFACE - BELOW Surface

LEFT - & PAV'T. - RIGHT     

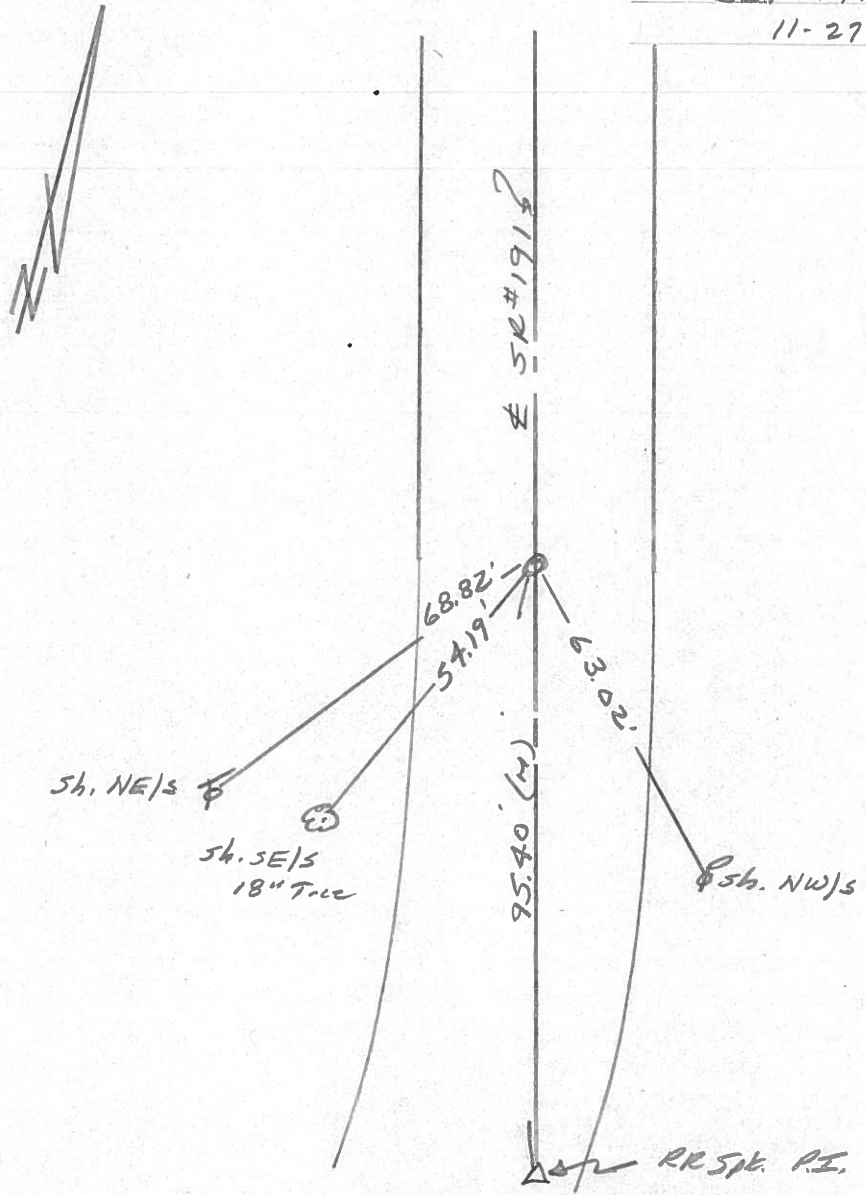
     TO      EDGE PAVEMENT

S.L.M. 21+15



SET P.K. NAIL TO SURFACE

11-27-89 *WJC*



RR Spk. P.I. Ref # 2-A

County Williams S.R. 191

Date 7-26-81

Township Springfield

Weather Cloudy

Section 28

Temp. 70°

T6N, R4E

Personnel LOFFMAN

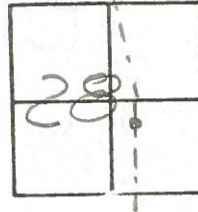
LOENRLE

HOUSEHOLDER

BARNHISEL

ENSIGAL

R-B



Set P.K.  
STA. 21+11.26

P.K. STA 26+46.09  
R Co. Rd. B-50  
E-W 1/4 line  
Sec. 28

1.0' RT of & Pawt  
7.8' TO RT EP  
10.5' TO LT EP

