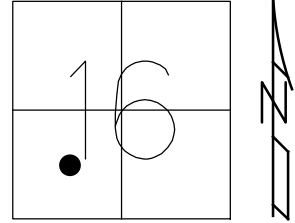


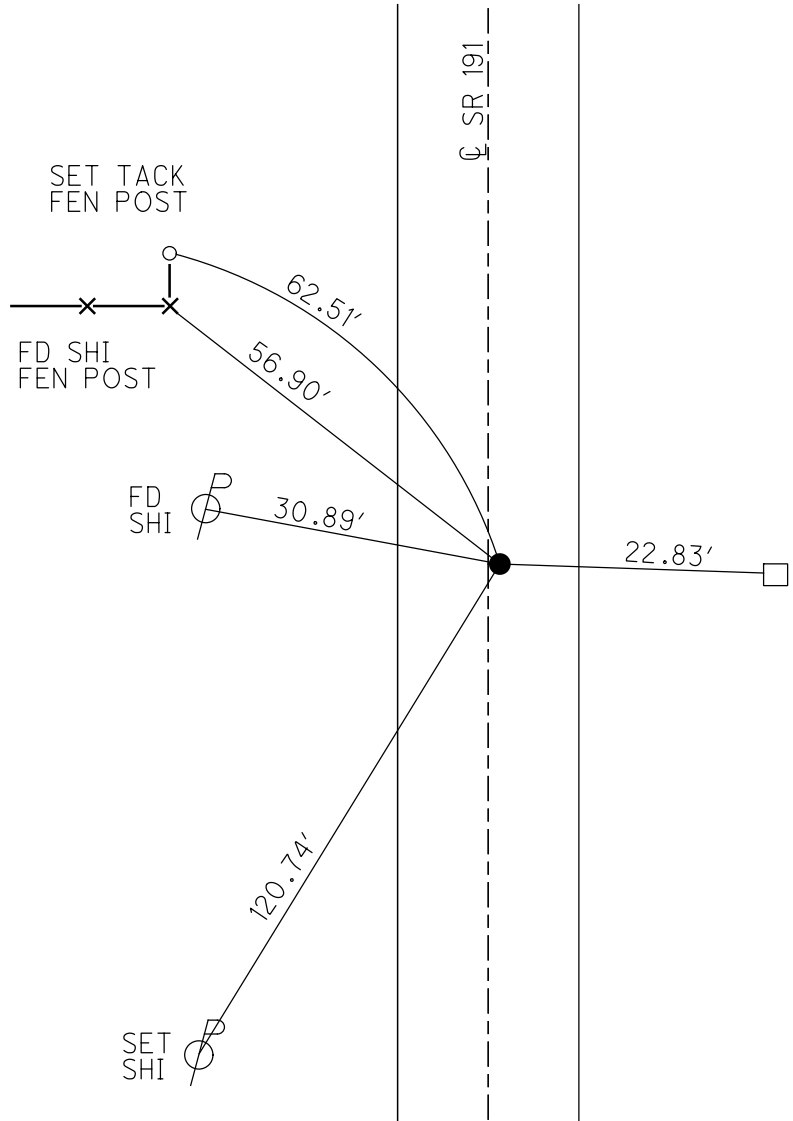
O.D.O.T. DISTRICT 2 SURVEY OFFICE (USE ONLY)

PERSONNEL _____ REFERENCE NO. 5 SHEET 9 OF 34
 NOTES RHOADES DATE 6/22/22 ROUTE SR 191
 H.C. NIESE WEATHER SUNNY COUNTY WILLIAMS
 R.C. WHITAKER TEMP. 83° TOWNSHIP SPRINGFIEND
 DWG BY RHOADES PID PAVETRAIN SECTION 16
 T 6 N R 4 E

TYPE MONUMENT MAG/WASHER
 ON SURFACE - ~~BELOW~~ ON _____
 OFFSET Q PAVEMENT 1.2' ~~LT~~ : RT
9.2' TO RT EDGE PAVEMENT
 STATION: 121+28



HORIZ.DATUM: NAD83 2011 GEOID: NAVD88 2018
 GRID: NORTHING: 664415.397 EASTING: 1444145.703

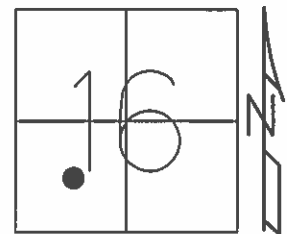


RECORD:
 FD R.R.SPIKE
 10/3/88, IS
 SET SM.R.R.SPIKE
 10/31/89, IS
 FD SM.R.R.SPIKE
 12/2/04, SAH
 4/18/06, RGN
 6/24/11, MC
 SET MAG/WASHER
 REF5
 2/3/12, SAH
 FD MAG/WASHER
 REF5
 6/22/22, TDN
 2/2/23, JMR

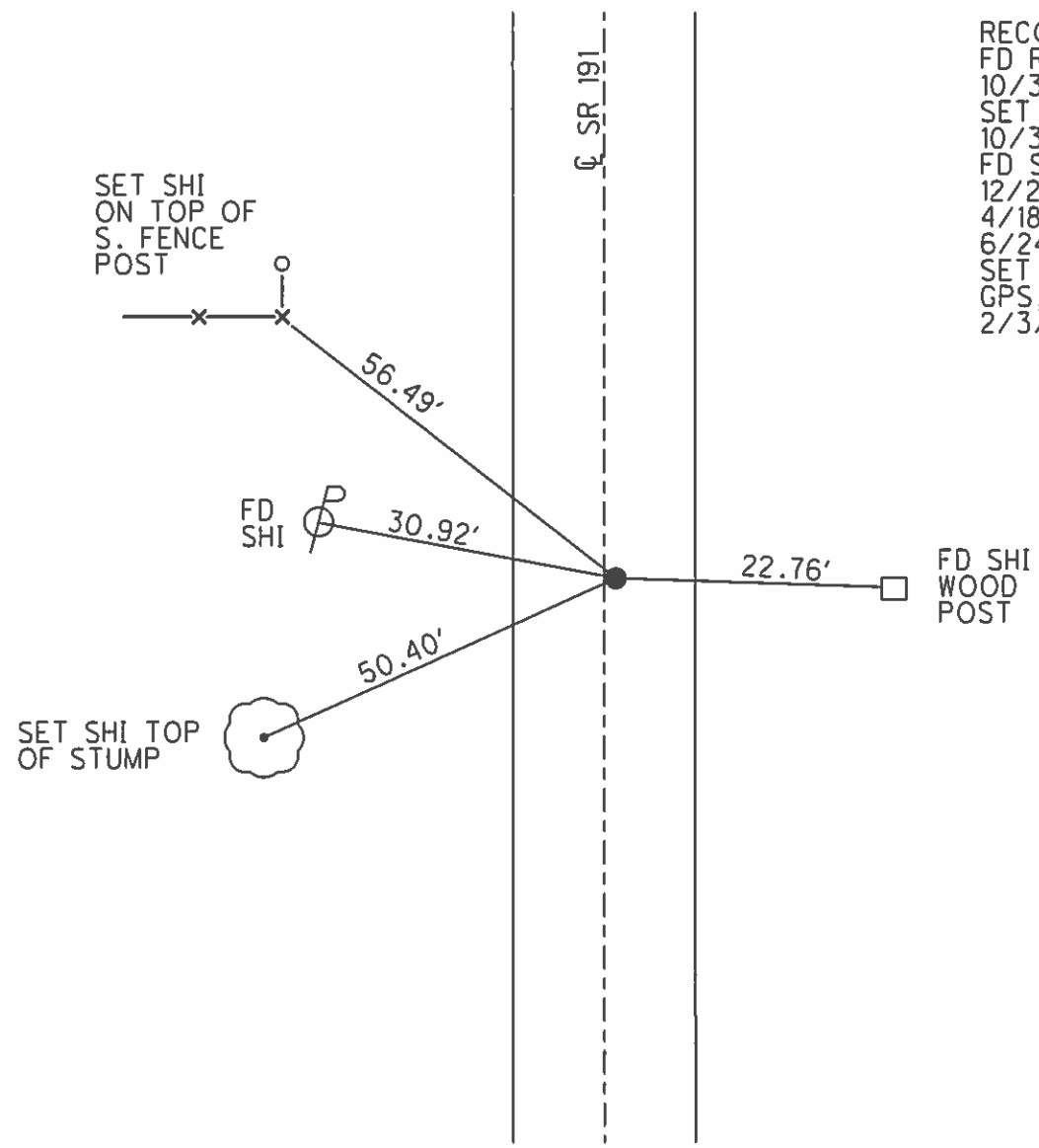
O.D.O.T. DISTRICT 2 SURVEY OFFICE (USE ONLY)

PERSONNEL _____ REFERENCE NO. 5 SHEET 9 OF 34
 NOTES HUSS DATE 6/24/11 ROUTE SR 191
 H.C. HUSS WEATHER RAIN COUNTY WILLIAMS
 R.C. CANTERBURY TEMP. 68° TOWNSHIP SPRINGFIELD
 _____ SECTION 16
 _____ T 6 N R 4 E

TYPE MONUMENT R.R.SPIKE
 ON SURFACE - ~~BELOW~~ ON _____
~~LEFT~~ - Q PAV'T - RIGHT 1.2'
9.2' TORT EDGE PAVEMENT
 S.L.M. 121+28



GRID: NORTHING: 664415.336 EASTING: 1444145.629



RECORD:
 FD R.R.SPIKE
 10/3/88, IS
 SET SM.R.R.SPIKE
 10/31/89, IS
 FD SM.R.R.SPIKE
 12/2/04, SAH
 4/18/06, RGN
 6/24/11, MC
 SET MAG/WASHER
 GPS, F5
 2/3/12, SAH

O.D.O.T. DISTRICT 2 SURVEY OFFICE

PERSONNEL

REFERENCE NO. 5

SHEET 7 OF

NOTES 1. Stone

H.C. D. Curtis

R.C. J. Horschelder

DATE 3 Oct. 88

WEATHER Fair

TEMP. 64.0

ROUTE SR#191

COUNTY Wilbans

TOWNSHIP Springfield

SECTION 16

T. R.

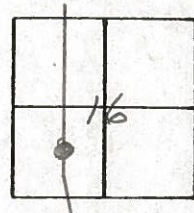
TYPE MONUMENT RR Spk.

ON SURFACE - BELOW 2"

LEFT - \odot PAV'T. - RIGHT

 TO EDGE PAVEMENT

S.L.M. 121+28



Set Small Spk. 10/31/89 1RS

