

O.D.O.T. DISTRICT 2 SURVEY OFFICE (USE ONLY)

PERSONNEL

REFERENCE NO. 7

SHEET 11 OF 34

NOTES JAMES

DATE 3/20/19

ROUTE SR 191

H.C. O'DONNELL

WEATHER CLOUDY

COUNTY WILLIAMS

R.C. JAMES

TEMP. 36°

TOWNSHIP SPRINGFIELD

DWG BY NIESE PID 92373

SECTION 4

T 6 N R 4 E

TYPE MONUMENT MAG/WASHER

ON SURFACE - ~~BELOW~~ ON

OFFSET  $\odot$  PAVEMENT ON LT : RT

- TO - EDGE PAVEMENT

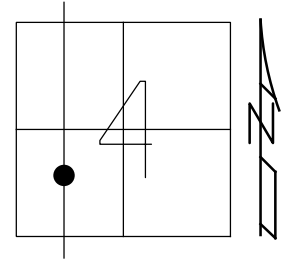
STATION: 228+10

HORZ.DATUM: NAD83(2011)

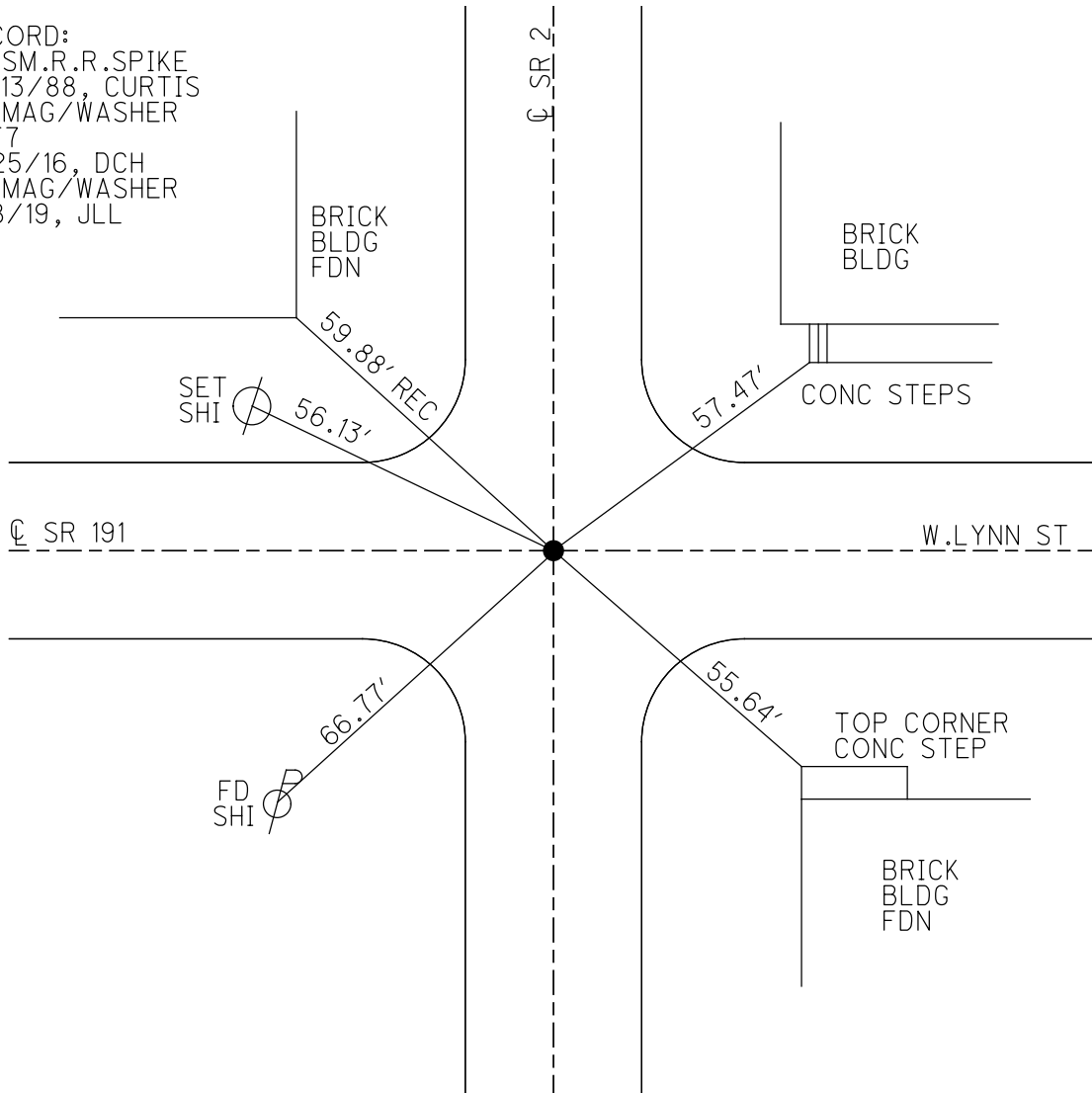
GEOID: 12A

GRID: NORTHING: 675142.513

EASTING: 1444180.183



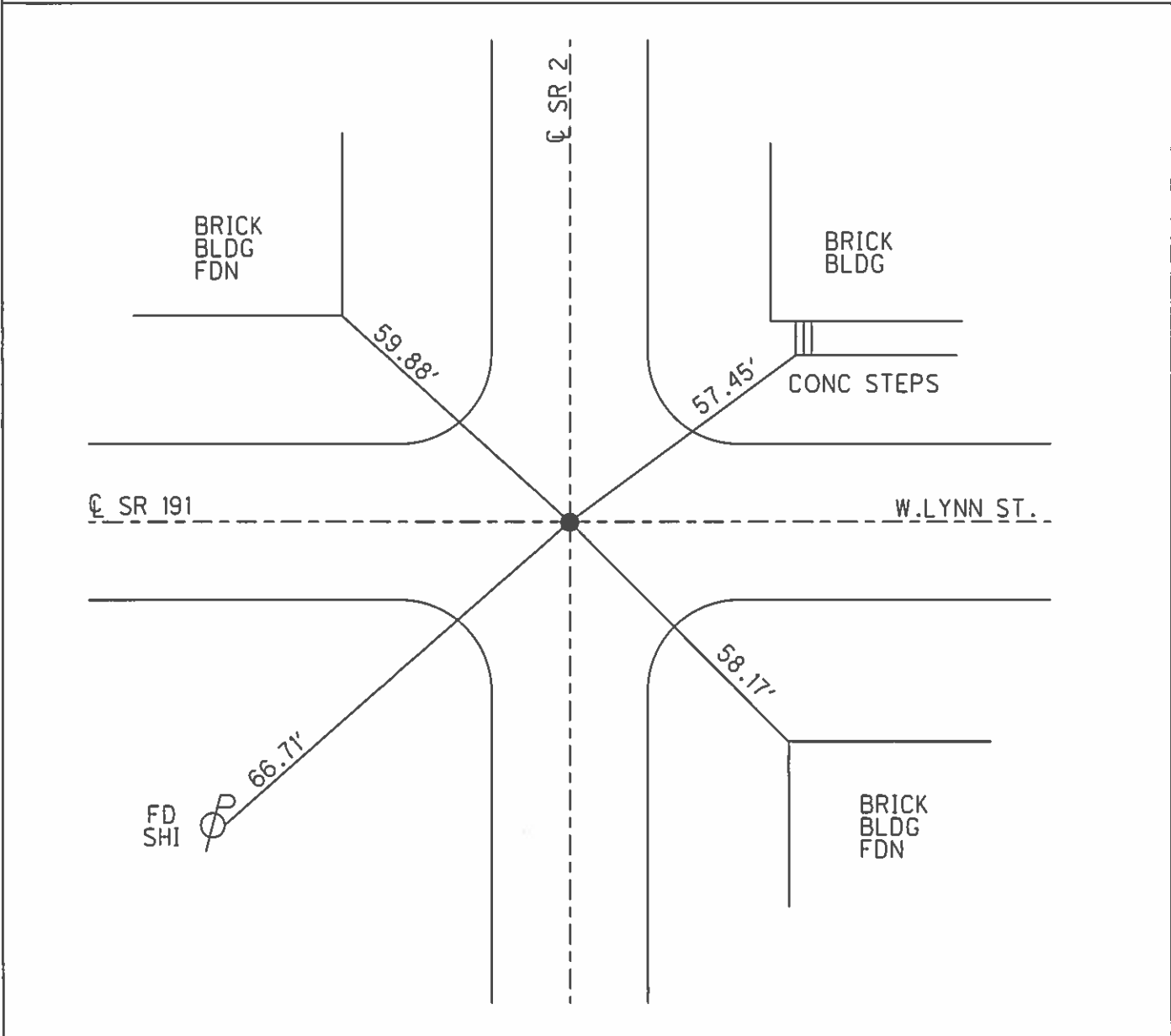
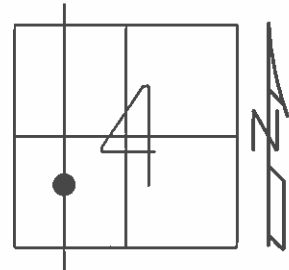
RECORD:  
FD SM.R.R.SPIKE  
10/13/88, CURTIS  
FD MAG/WASHER  
REF 7  
11/25/16, DCH  
FD MAG/WASHER  
8/8/19, JLL



**O.D.O.T. DISTRICT 2 SURVEY OFFICE (USE ONLY)**

PERSONNEL \_\_\_\_\_ REFERENCE NO. 7 SHEET 11 OF 34  
 NOTES CURTIS DATE 10/13/88 ROUTE SR 191  
 H.C. HOUSEHOLDER WEATHER MILD COUNTY WILLIAMS  
 R.C. \_\_\_\_\_ TEMP. 55° TOWNSHIP SPRINGFIELD  
 \_\_\_\_\_ SECTION 4  
 \_\_\_\_\_ T 6 N R 4 E

TYPE MONUMENT SM.R.R.SPIKE  
 ON SURFACE - ~~BELOW~~ ON  
 LEFT - ☉ PAV'T - RIGHT ON  
- TO - EDGE PAVEMENT  
 S.L.M. 228+10  
 GRID: NORTHING: - EASTING: -



O.D.O.T. DISTRICT 2 SURVEY OFFICE

PERSONNEL \_\_\_\_\_

REFERENCE NO. <sup>SR 2 = E # 704 SR 191</sup> 52-F

SHEET 1 OF 23

NOTES CURTIS

DATE 10-13-88

ROUTE SR 191

H.C. HOUSEHOLDER

WEATHER MILD

COUNTY WILLIAMS

R.C. \_\_\_\_\_

TEMP. 55°

TOWNSHIP SPRINGFIELD

SECTION 4

T 6 N R 4 E

TYPE MONUMENT SM RR SPIKE

ON SURFACE ~~- BELOW~~ ON

~~LEFT -~~ Q PAV'T ~~- RIGHT~~ ON

TO EDGE PAVEMENT

S.L.M. 228+10 = SR 191  
734+07 = SR 2

