

O.D.O.T. DISTRICT 2 SURVEY OFFICE (USE ONLY)

PERSONNEL

REFERENCE NO. 8

SHEET 12 OF 34

NOTES JAMES

DATE 3/20/19

ROUTE SR 191

H.C. O'DONNELL

WEATHER CLOUDY

COUNTY WILLIAMS

R.C. JAMES

TEMP. 36°

TOWNSHIP SPRINGFIELD

SECTION 5

DWG BY NIESE PID 92373

T 6 N R 4 E

TYPE MONUMENT MAG/WASHER

ON SURFACE - ~~BELOW~~ ON

OFFSET  $\odot$  PAVEMENT 3.0' LT : ~~RT~~

- TO - EDGE PAVEMENT

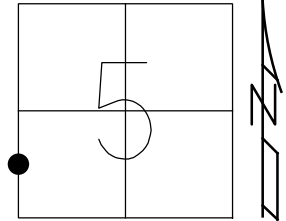
STATION: 241+22.16

HORIZ.DATUM: NAD83(2011)

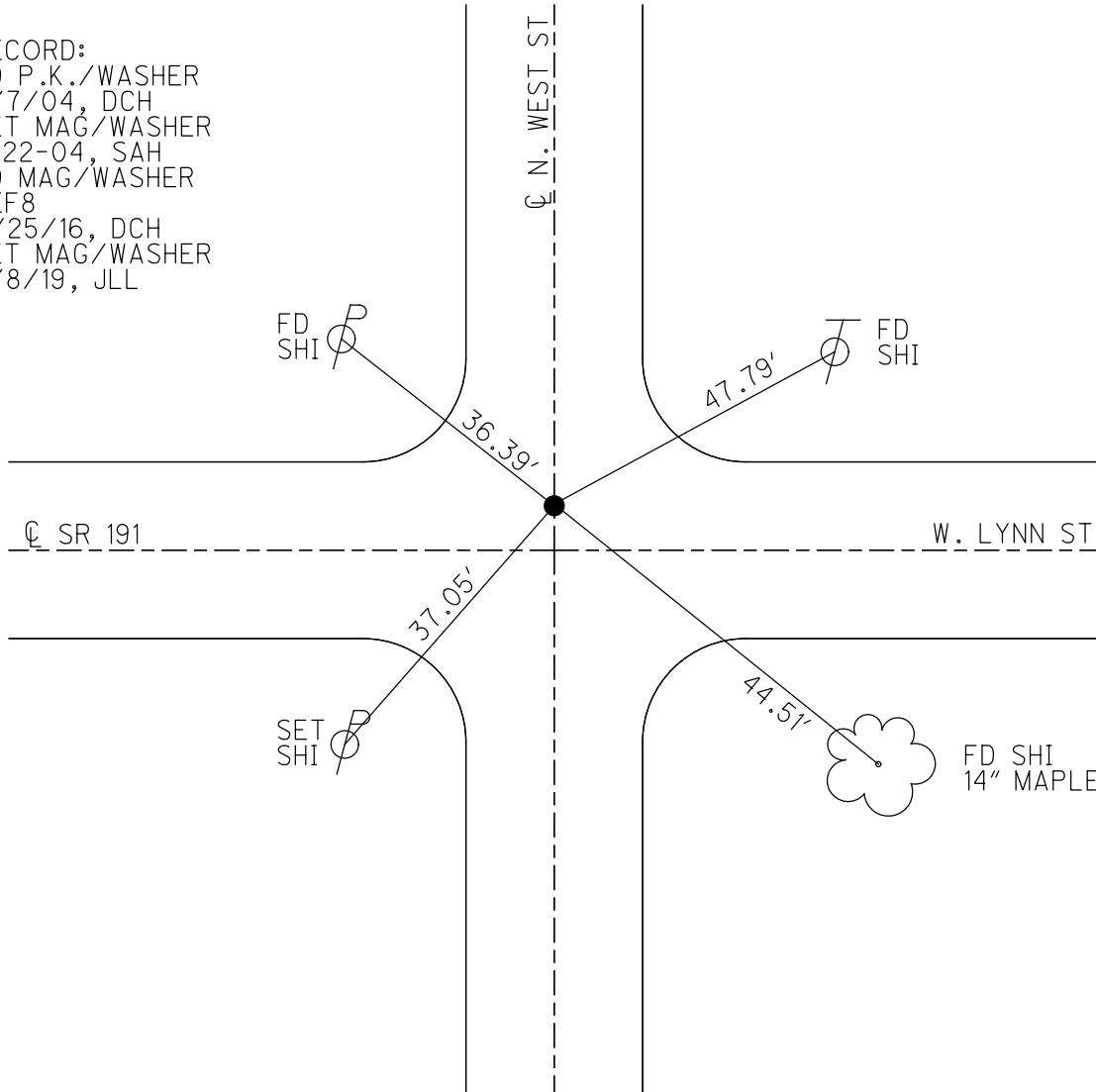
GEOID: 12A

GRID: NORTHING: 675162.851

EASTING: 1442868.258



RECORD:  
 FD P.K./WASHER  
 5/7/04, DCH  
 SET MAG/WASHER  
 7-22-04, SAH  
 FD MAG/WASHER  
 REF8  
 11/25/16, DCH  
 SET MAG/WASHER  
 8/8/19, JLL



**O.D.O.T. DISTRICT 2 SURVEY OFFICE (USE ONLY)**

PERSONNEL \_\_\_\_\_ REFERENCE NO. 8 SHEET 12 OF 34

NOTES HOMAN DATE 5/7/04 ROUTE SR 191

H.C. CANTERBURY WEATHER CLOUDY COUNTY WILLIAMS

R.C. HOMAN TEMP. 55° TOWNSHIP SPRINGFIELD

SECTION 5

T 6 N R 4 E

TYPE MONUMENT P.K./WASHER

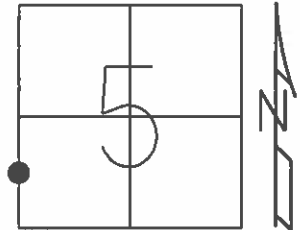
ON SURFACE - ~~BELOW~~ ON \_\_\_\_\_

LEFT - ~~C PAV'T~~ - RIGHT 3'

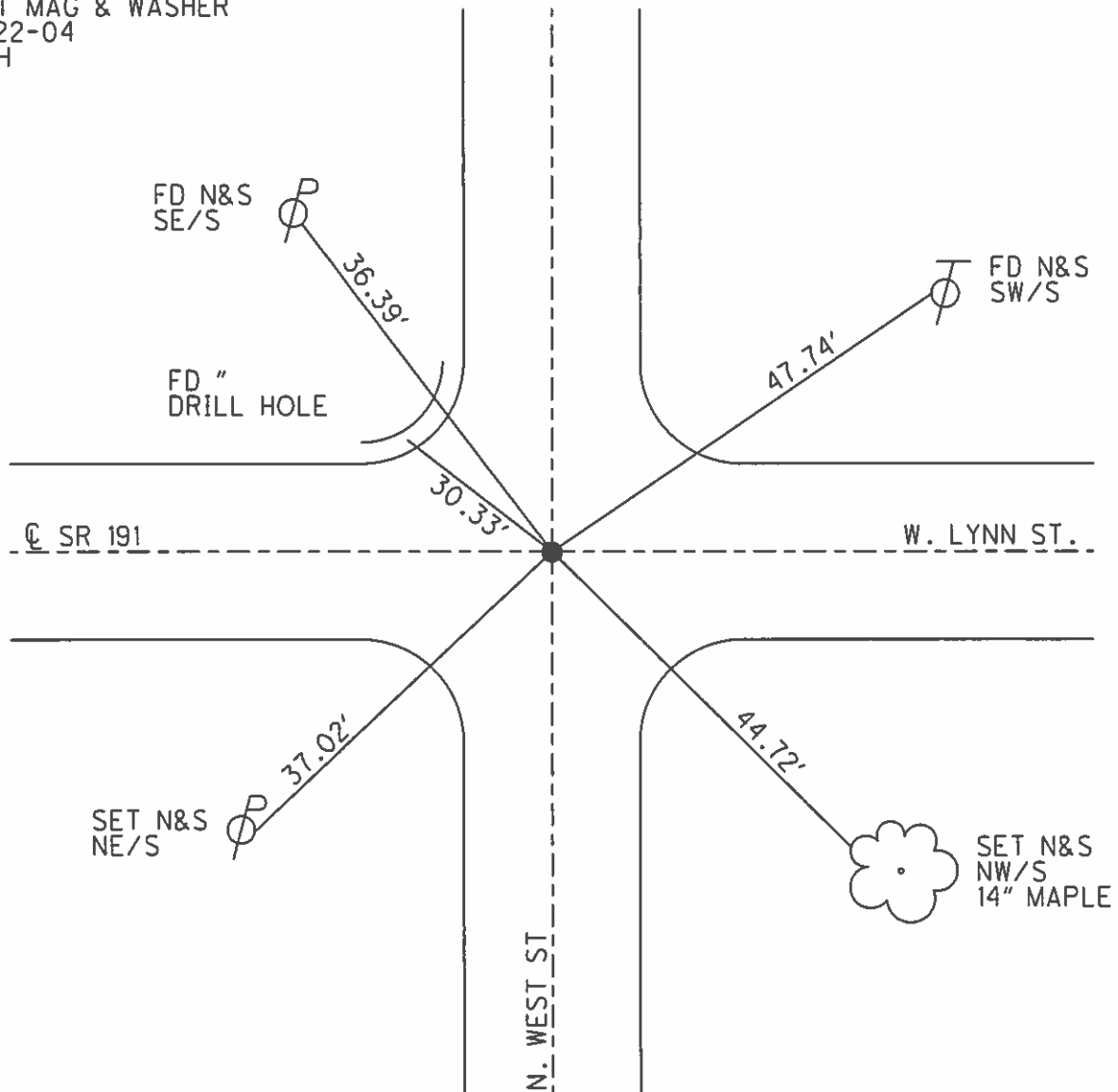
- TO - EDGE PAVEMENT

S.L.M. 241+23

GRID: NORTHING: \_\_\_\_\_ EASTING: \_\_\_\_\_



SET MAG & WASHER  
7-22-04  
SAH



O.D.O.T. DISTRICT 2 SURVEY OFFICE

PERSONNEL \_\_\_\_\_

REFERENCE NO. 8

SHEET 2 OF 23

NOTES HOMAN

DATE 05-07-04

ROUTE SR 191

H.C. CANTERBURY

WEATHER CLOUDY

COUNTY WILLIAMS

R.C. HOMAN

TEMP. 55°

TOWNSHIP SPRINGFIELD

SECTION 5

T 6 N R 4 E

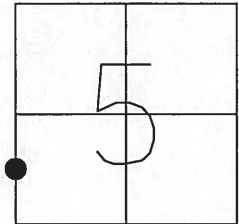
TYPE MONUMENT PK & WASHER

ON SURFACE ~~BELOW~~ ON

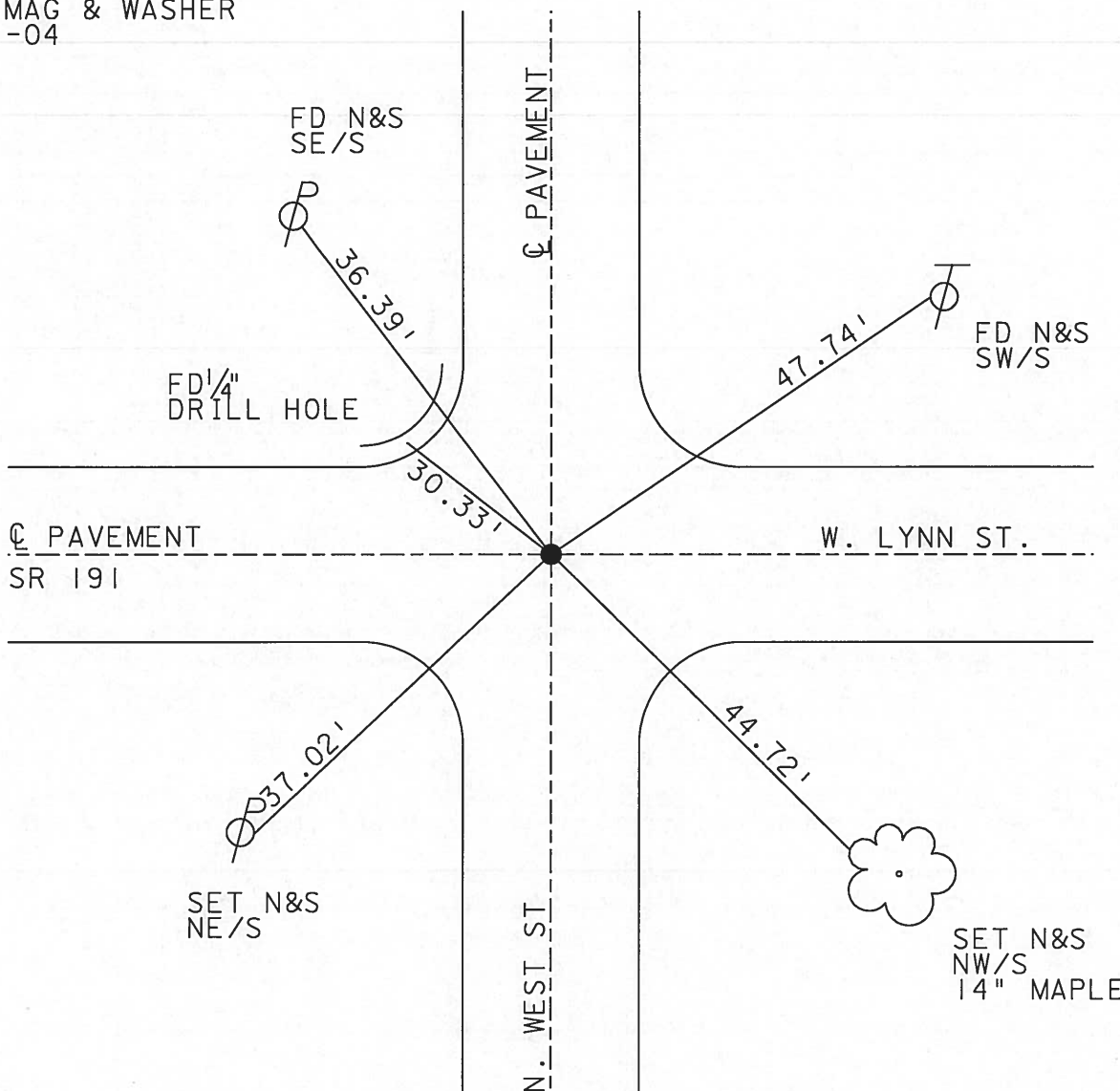
LEFT ~~C PAVT~~ ~~RIGHT~~ 3' LT

TO EDGE PAVEMENT

S.L.M. 241+23



SET MAG & WASHER  
7-22-04  
SAH



Resurfaced 2004

O.D.O.T. DISTRICT 2 SURVEY OFFICE

PERSONNEL \_\_\_\_\_

REFERENCE NO. \_\_\_\_\_

SHEET 1 OF 22

NOTES 1. Stone

H.C. D. Curtis

DATE 7 Jan. 87

ROUTE SR #191

R.C. T. Householder

WEATHER Cloudy

COUNTY Williams

TEMP. 30°

TOWNSHIP Springfield

SECTION 5

T \_\_\_\_\_ R \_\_\_\_\_

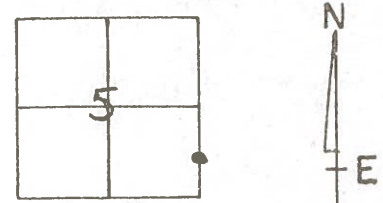
TYPE MONUMENT PK Nail

ON SURFACE - BELOW Surface

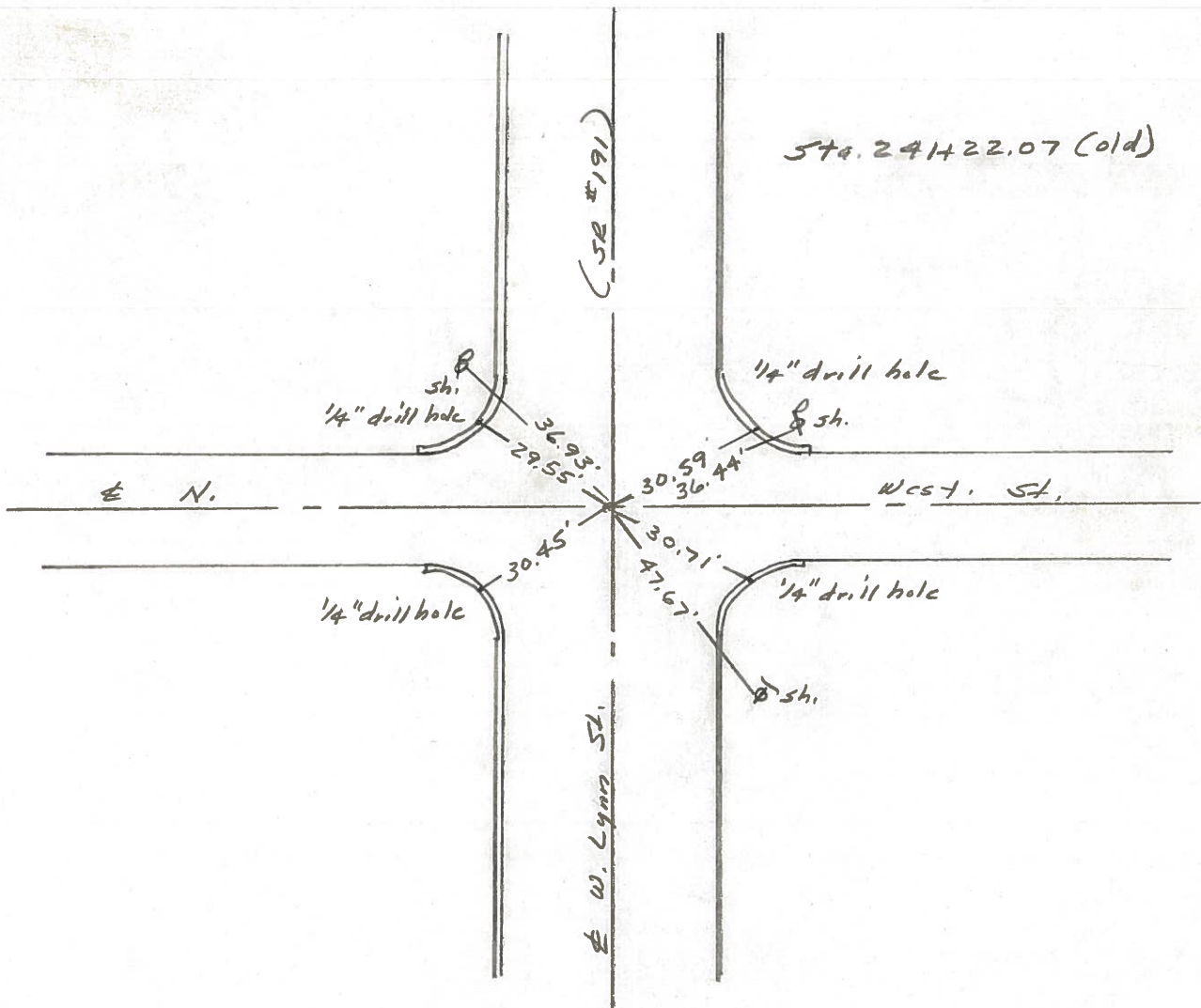
LEFT - & PAV'T. - RIGHT \_\_\_\_\_

TO \_\_\_\_\_ EDGE PAVEMENT

S.L.M. 241+23



Set P.K. To surface  
9-10-87



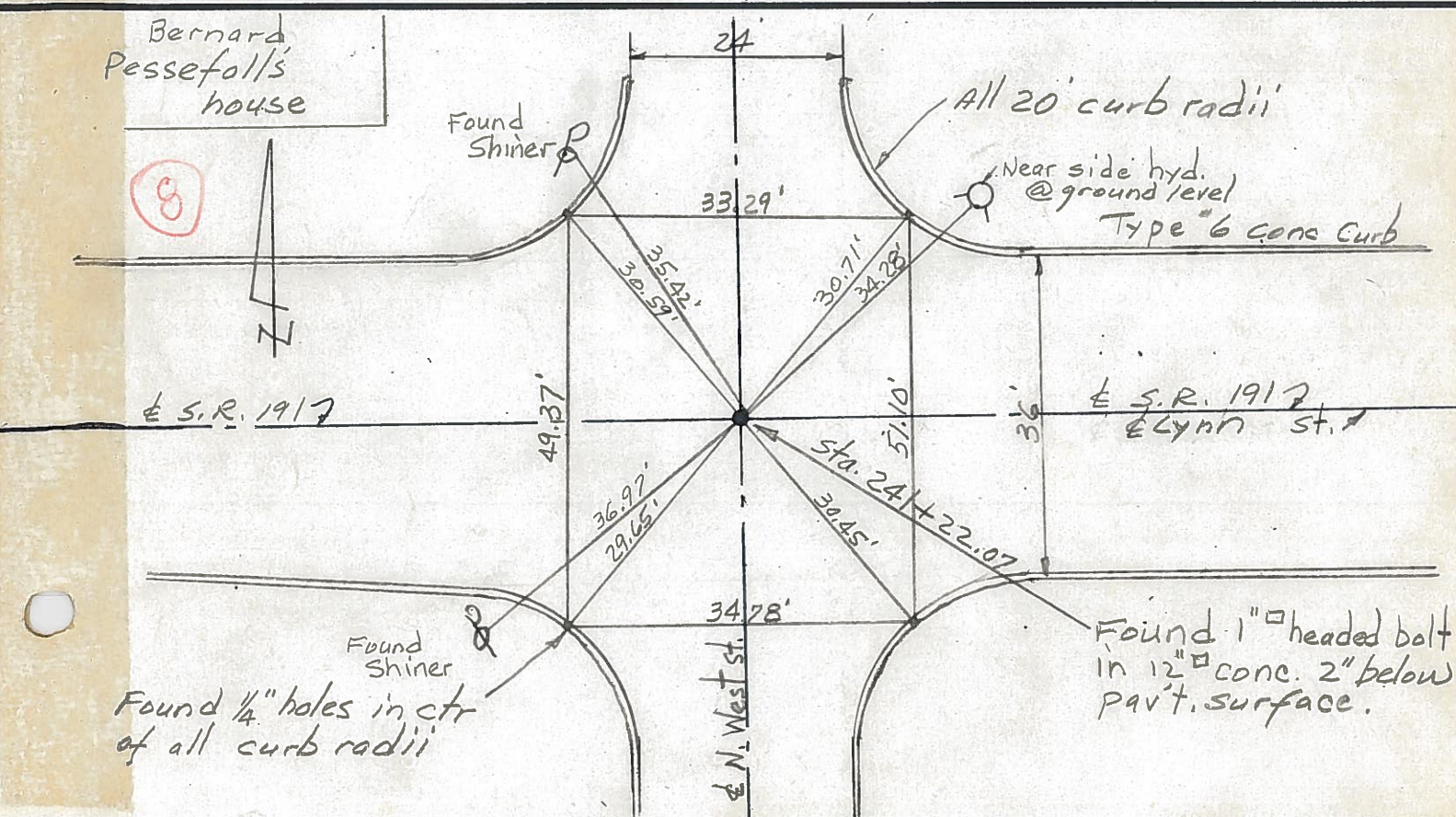
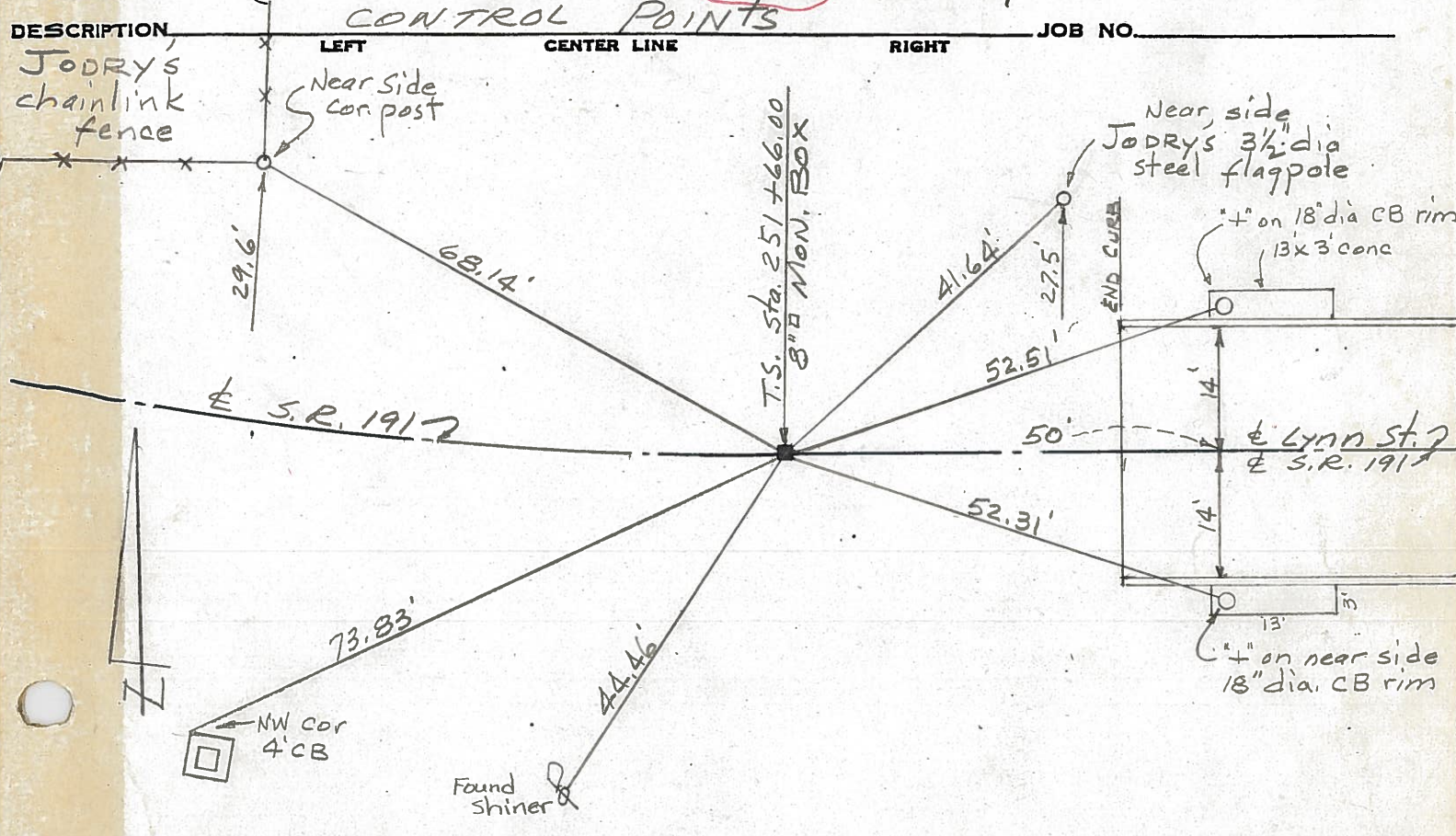


PERSONNEL	TITLE	PERSONNEL	TITLE
Red Beach			
W. Knape			

COUNTY Williams DATE 7 Mar. 1977

S. R. 191 WEATHER \_\_\_\_\_

SEC Stryker - W. Unity TEMP \_\_\_\_\_





PERSONNEL TITLE PERSONNEL TITLE

Louys

COUNTY WV

DATE \_\_\_\_\_

S. R. 191-Stryker (LYNN ST.) WEATHER \_\_\_\_\_

From Defiance St.

SEC. To West St. TEMP. \_\_\_\_\_

DESCRIPTION

Witnesses to control Points

JOB NO. \_\_\_\_\_

LEFT

CENTER LINE

RIGHT

#  
332

Int'x'n. LYNN &  
West Sts.  
(Monument)

#  
331

Int'x'n. LYNN &  
College Sts.

#  
330

INT'X'N. LYNN &  
Pleasant Sts.

#  
329

Int'x'n. LYNN &  
Defiance Sts.  
(Monument)