

O.D.O.T. DISTRICT 2 SURVEY OFFICE (USE ONLY)

PERSONNEL

REFERENCE NO. 9

SHEET 13 OF 34

NOTES JAMES

DATE 3/20/19

ROUTE SR 191

H.C. O'DONNELL

WEATHER CLOUDY

COUNTY WILLIAMS

R.C. JAMES

TEMP. 36°

TOWNSHIP SPRINGFIELD

DWG BY NIESE

PID 92373

SECTION 5

T 6 N R 4 E

TYPE MONUMENT MAG SHANK

ON SURFACE - ~~BELOW~~ ON

OFFSET Q PAVEMENT 1.3' LT : ~~RT~~

11.1' TO LT EDGE PAVEMENT

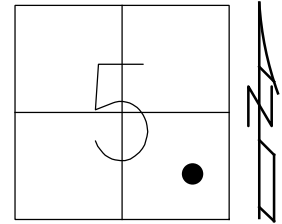
STATION: 251+65.65

HORZ.DATUM: NAD83(2011)

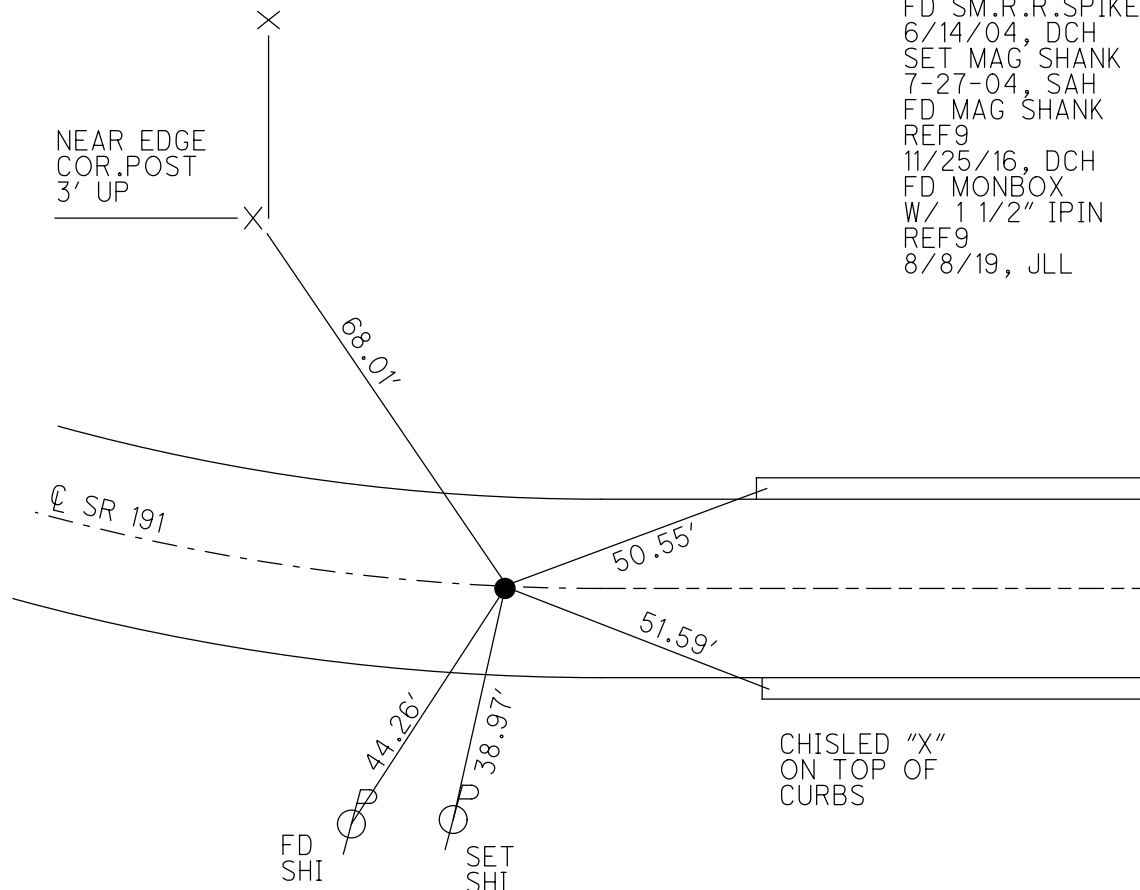
GEOID: 12A

GRID: NORTHING: 675192.528

EASTING: 1441824.873



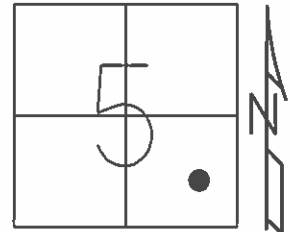
RECORD: T.S.  
 STA 251+66  
 MONBOX COVERED  
 IN CONST.  
 SET SMALL R.R.SPIKE  
 9-9-87  
 FD SM.R.R.SPIKE  
 6/14/04, DCH  
 SET MAG SHANK  
 7-27-04, SAH  
 FD MAG SHANK  
 REF9  
 11/25/16, DCH  
 FD MONBOX  
 W/ 1 1/2" IPIN  
 REF9  
 8/8/19, JLL



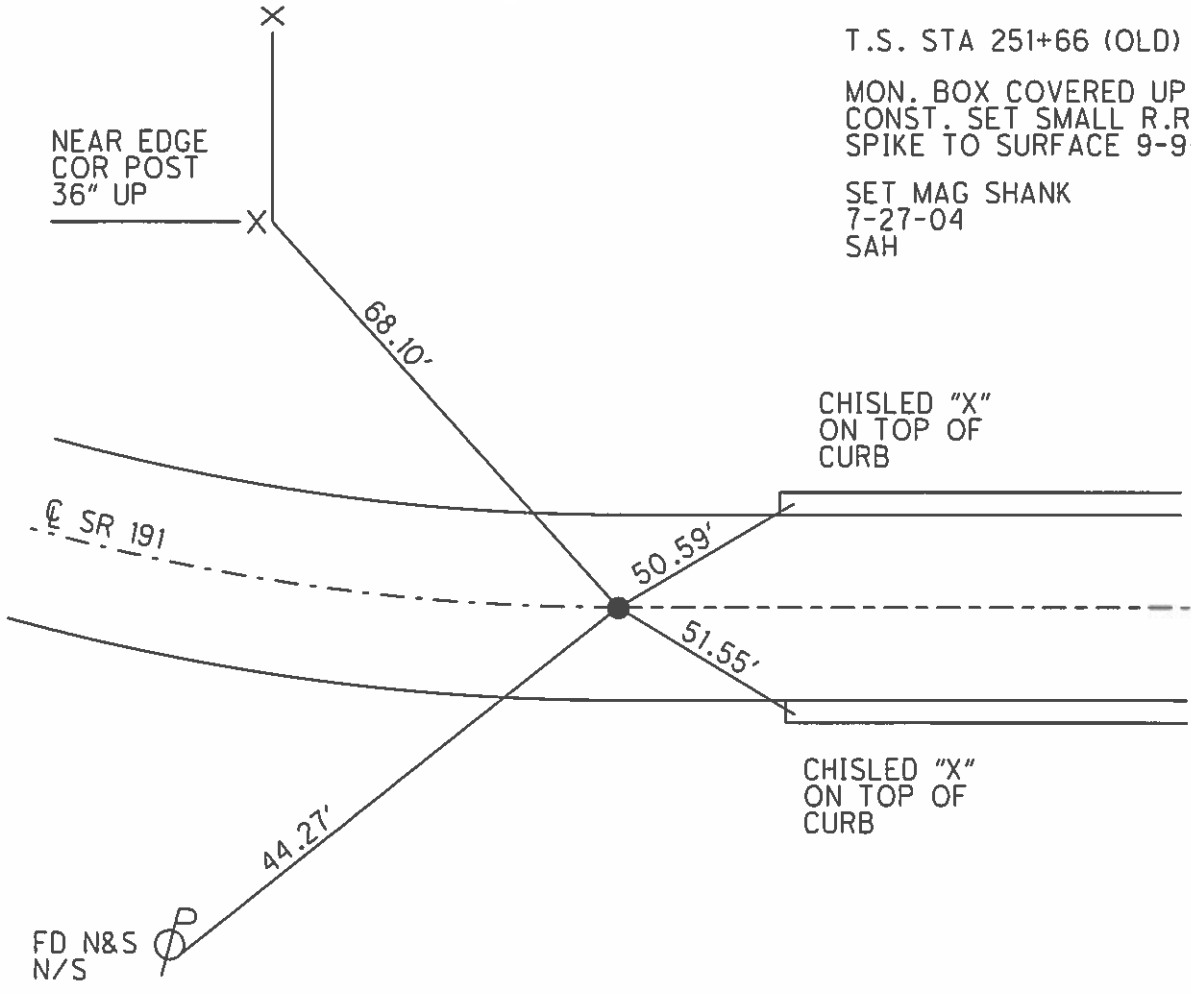
**O.D.O.T. DISTRICT 2 SURVEY OFFICE (USE ONLY)**

PERSONNEL \_\_\_\_\_ REFERENCE NO. 9 SHEET 13 OF 34  
 NOTES HUSS DATE 6/14/04 ROUTE SR 191  
 H.C. HOMAN WEATHER CLOUDY COUNTY WILLIAMS  
 R.C. NUHFER TEMP. 78° TOWNSHIP SPRINGFIELD  
 \_\_\_\_\_ SECTION 5  
 \_\_\_\_\_ T 6 N R 4 E

TYPE MONUMENT SM.R.R.SPIKE  
 ON SURFACE - ~~BELOW~~ ON \_\_\_\_\_  
 LEFT - ~~C PAV'T~~ - RIGHT 1.3'  
11.1' TO LT EDGE PAVEMENT  
 S.L.M. 251+66



GRID: NORTHING: - EASTING: -



T.S. STA 251+66 (OLD)  
 MON. BOX COVERED UP IN  
 CONST. SET SMALL R.R.  
 SPIKE TO SURFACE 9-9-87  
 SET MAG SHANK  
 7-27-04  
 SAH

O.D.O.T. DISTRICT 2 SURVEY OFFICE

PERSONNEL

REFERENCE NO. 9

SHEET 3 OF 23

NOTES HUSS

DATE 06-14-04

ROUTE SR 191

H.C. HOMAN

WEATHER CLOUDY

COUNTY WILLIAMS

R.C. NUHFER

TEMP. 78°

TOWNSHIP SPRINGFIELD

SECTION 5

T 6 N R 4 E

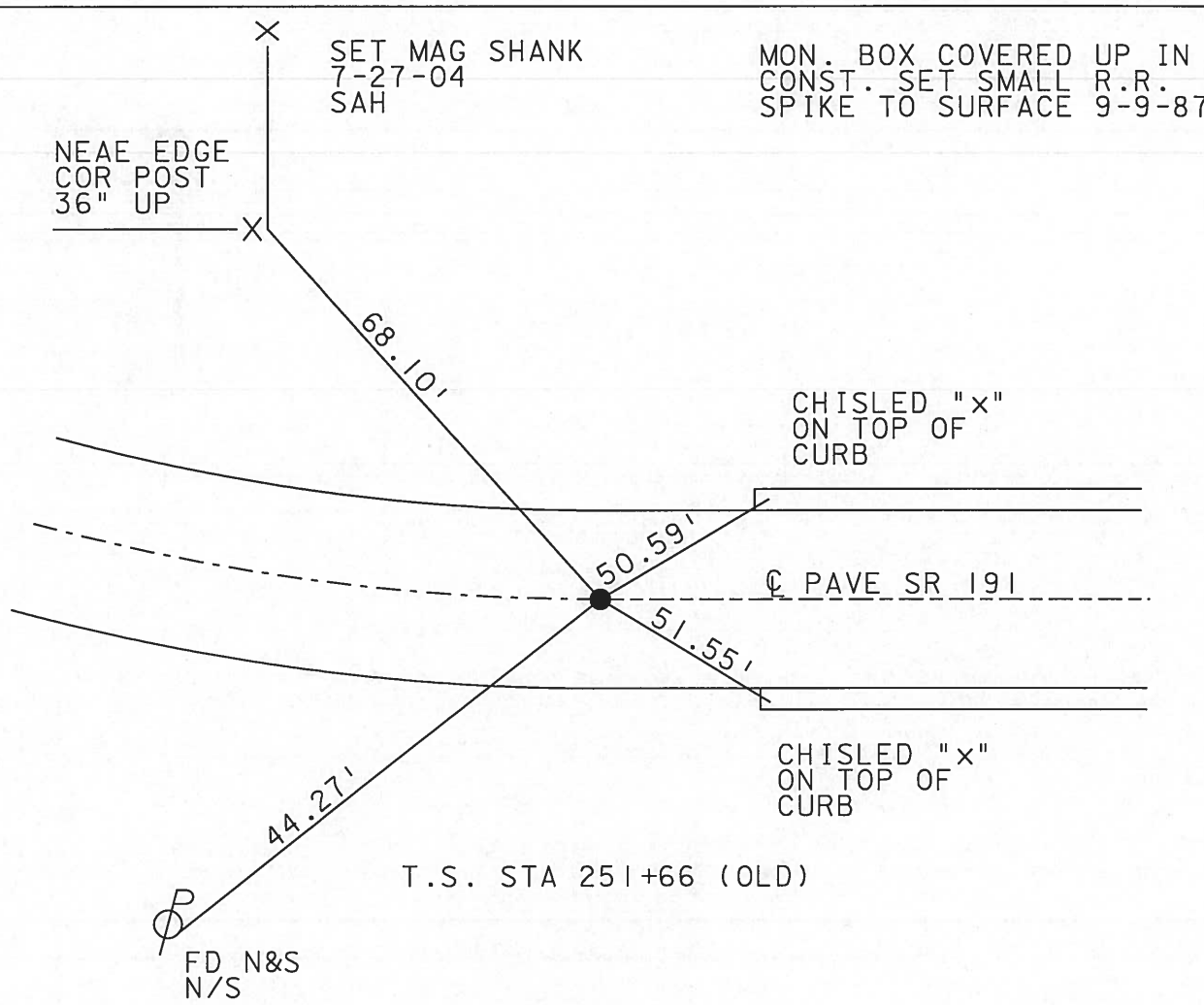
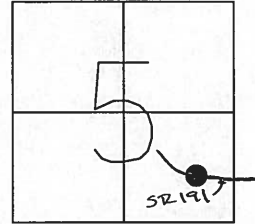
TYPE MONUMENT SM RR SPIKE

ON SURFACE ~~- BELOW~~ ON

LEFT ~~- C PAVT - RIGHT~~ 1.3' LT

11.1' TO LT EDGE PAVEMENT

S.L.M. 251+66



MON. BOX COVERED UP IN  
CONST. SET SMALL R.R.  
SPIKE TO SURFACE 9-9-87

# O.D.O.T. DISTRICT 2 SURVEY OFFICE

PERSONNEL \_\_\_\_\_

REFERENCE NO. \_\_\_\_\_

SHEET 2 OF 22

NOTES 1. Stone

H.C. D. Lurtis

R.C. T. Hausholder

DATE 7 Jan. 87

WEATHER Cloudy

TEMP. 30°

ROUTE SR#191

COUNTY Williams

TOWNSHIP Springfield

SECTION 5

T. \_\_\_\_\_ R. \_\_\_\_\_

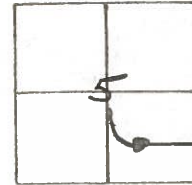
TYPE MONUMENT Mon. Box

ON SURFACE - BELOW Surface

LEFT - ℄ PAV'T. - RIGHT \_\_\_\_\_

TO \_\_\_\_\_ EDGE PAVEMENT

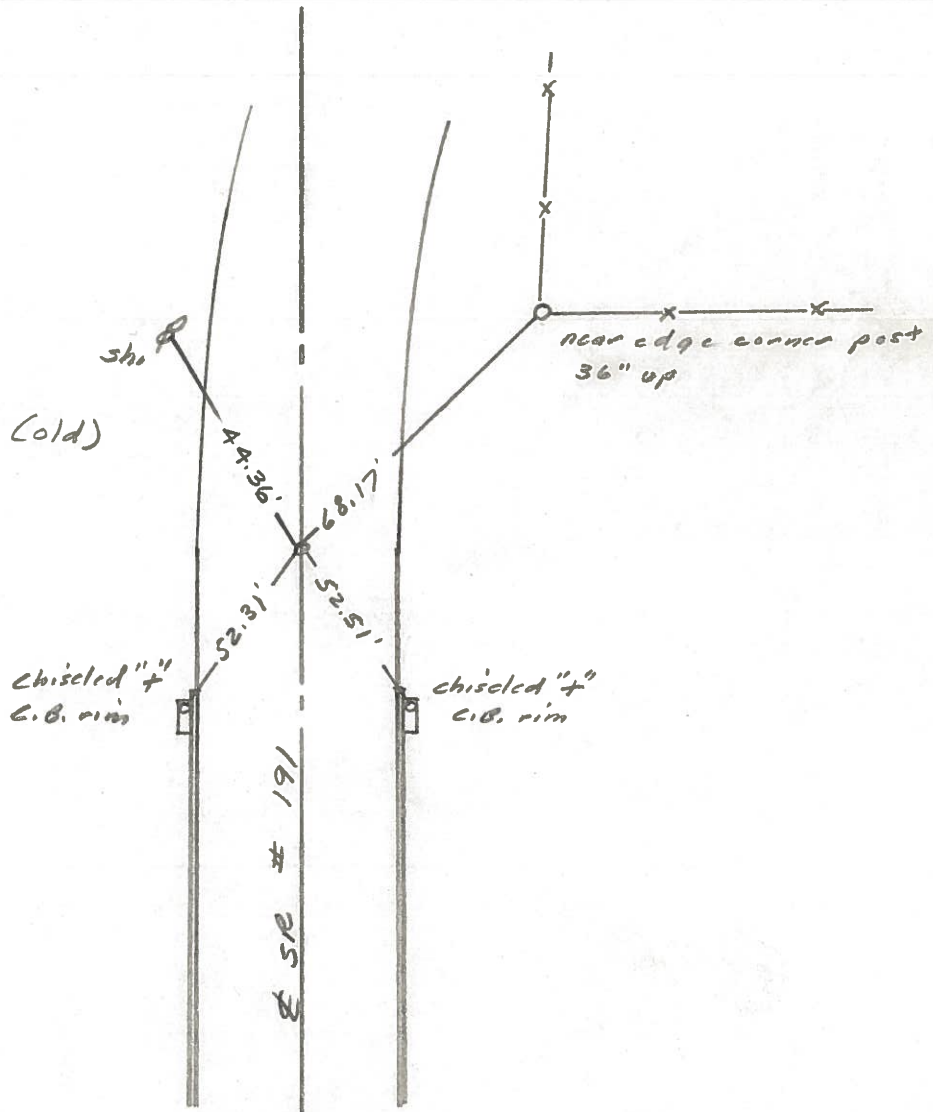
S.L.M. 251+67



MON. BOX COVERED UP IN  
CONST. SET SMALL IRK SPK  
TO SURFACE 9-9-87



T.S. Sta. 251+66.00 (old)





PERSONNEL TITLE PERSONNEL TITLE

Red Beach  
W. Knape

COUNTY Williams DATE 7 Mar, 1977

S. R. 191 WEATHER

SEC. Stryker - W. Unity TEMP

DESCRIPTION CONTROL POINTS LEFT CENTER LINE RIGHT JOB NO.

