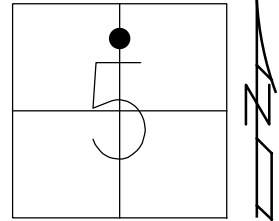


O.D.O.T. DISTRICT 2 SURVEY OFFICE (USE ONLY)

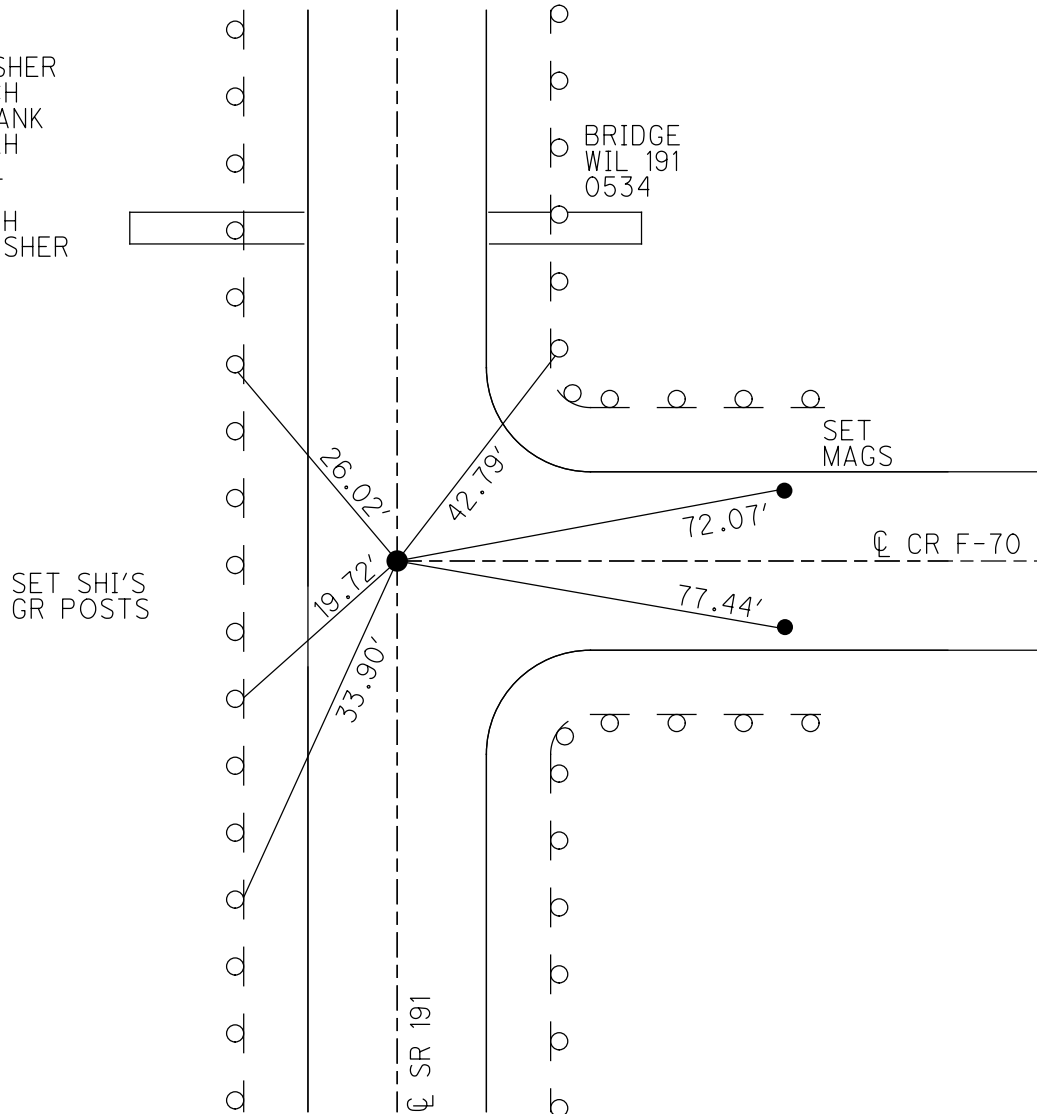
PERSONNEL _____ REFERENCE NO. 12 SHEET 16 OF 34
 NOTES AUBLE DATE 9/6/19 ROUTE SR 191
 H.C. LEU WEATHER CLOUDY COUNTY WILLIAMS
 R.C. NASON TEMP. 62° TOWNSHIP SPRINGFIELD
 _____ NIESE SECTION 5
 DWG BY NIESE PID 92373 T 6 N R 4 E

TYPE MONUMENT MAG NAIL
 ON SURFACE - ~~BELOW~~ ON _____
 OFFSET 0.6' LT : ~~RT~~
10.2' TO LT EDGE PAVEMENT
 STATION: 280+99.3



HORIZ.DATUM: NAD83(2011) GEOID: 12A
 GRID: NORTHING: 677205.231 EASTING: 1440283.423

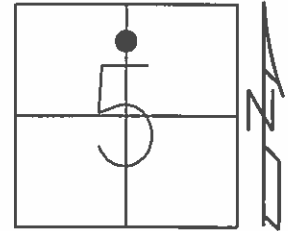
RECORD:
 FD P.K./WASHER
 6/14/04, DCH
 SET MAG SHANK
 7-27-04, SAH
 FD MAG NAIL
 REF12
 11/25/16, DCH
 SET MAG/WASHER
 9/6/19, JLL



O.D.O.T. DISTRICT 2 SURVEY OFFICE (USE ONLY)

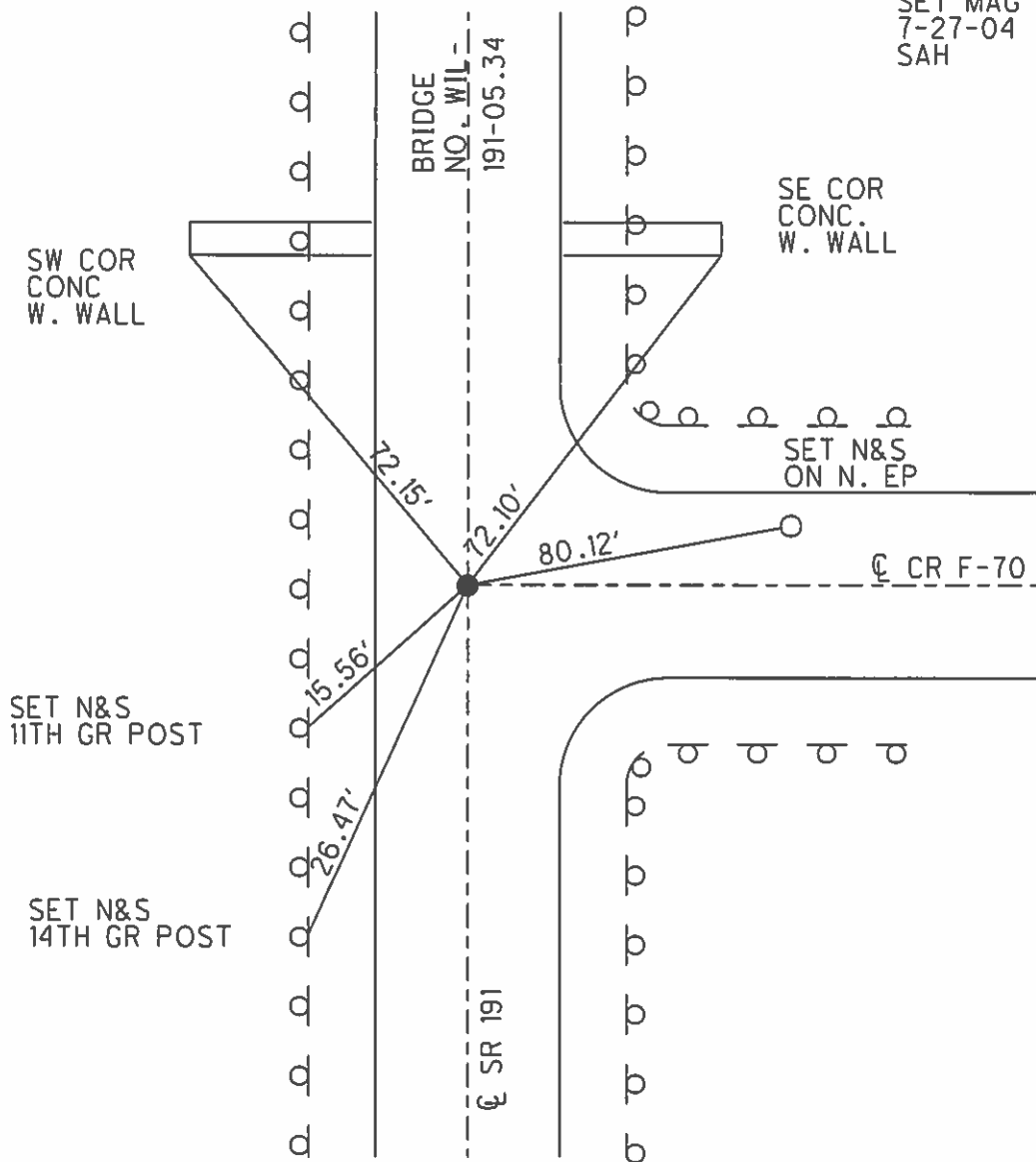
PERSONNEL _____ REFERENCE NO. 12 SHEET 16 OF 34
 NOTES HUSS DATE 6/14/04 ROUTE SR 191
 H.C. HOMAN WEATHER CLOUDY COUNTY WILLIAMS
 R.C. NUHFER TEMP. 75° TOWNSHIP SPRINGFIELD
 SECTION 5
 T 6 N R 4 E

TYPE MONUMENT P.K./WASHER
 ON SURFACE - ~~BELOW~~ ON
 LEFT - ~~C PAV'T~~ = RIGHT 0.6'
10.2' TO LT EDGE PAVEMENT
 S.L.M. 281+01



GRID: NORTHING: _____ EASTING: _____

SET MAG SHANK
 7-27-04
 SAH



O.D.O.T. DISTRICT 2 SURVEY OFFICE

PERSONNEL _____

REFERENCE NO. 12

SHEET 6 OF 23

NOTES HUSS

DATE 6-14-04

ROUTE SR 191

H.C. HOMAN

WEATHER CLOUDY

COUNTY WILLIAMS

R.C. NUHFER

TEMP. 75°

TOWNSHIP SPRINGFIELD

SECTION 5

T 6 N R 4 E

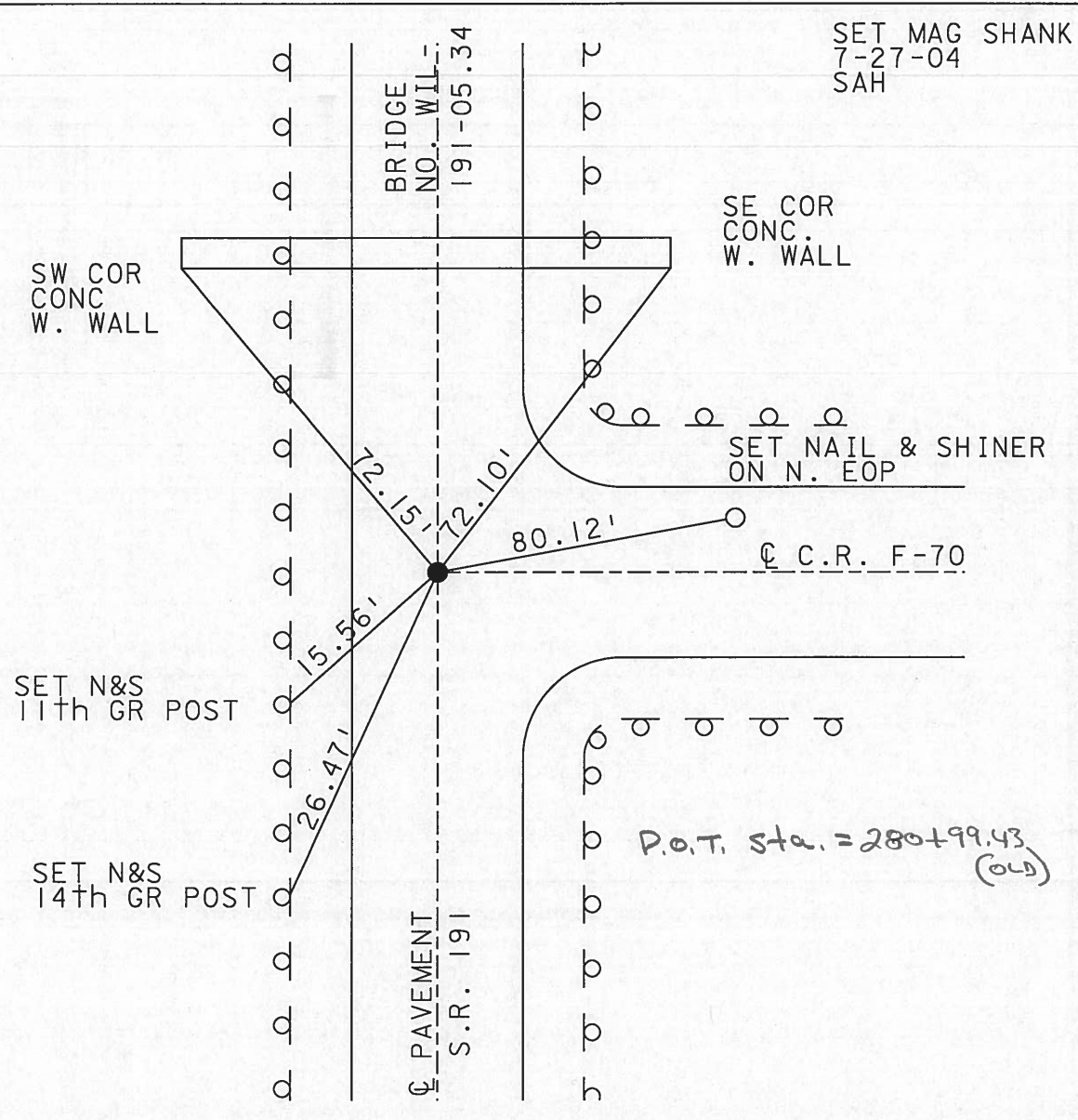
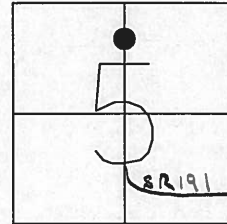
TYPE MONUMENT PK & WASHER

ON SURFACE ~~BELOW~~ ON

LEFT ~~C PAVT~~ ~~RIGHT~~ 0.6' LT

10.2' TO LT EDGE PAVEMENT

S.L.M. 281+01



O.D.O.T. DISTRICT 2 SURVEY OFFICE

PERSONNEL _____

REFERENCE NO. 12

SHEET 5 OF 22

NOTES 1. Stone

H.C. D. Curtis

R.C. J. Hooscholder

DATE 7 Jan. 87

WEATHER Cloudy

TEMP. 30°

ROUTE SR #191

COUNTY Williams

TOWNSHIP Springfield

SECTION 5

T. _____ R. _____

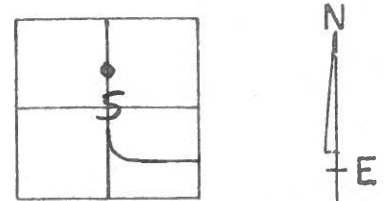
TYPE MONUMENT PK Nail

ON SURFACE - BELOW Surface

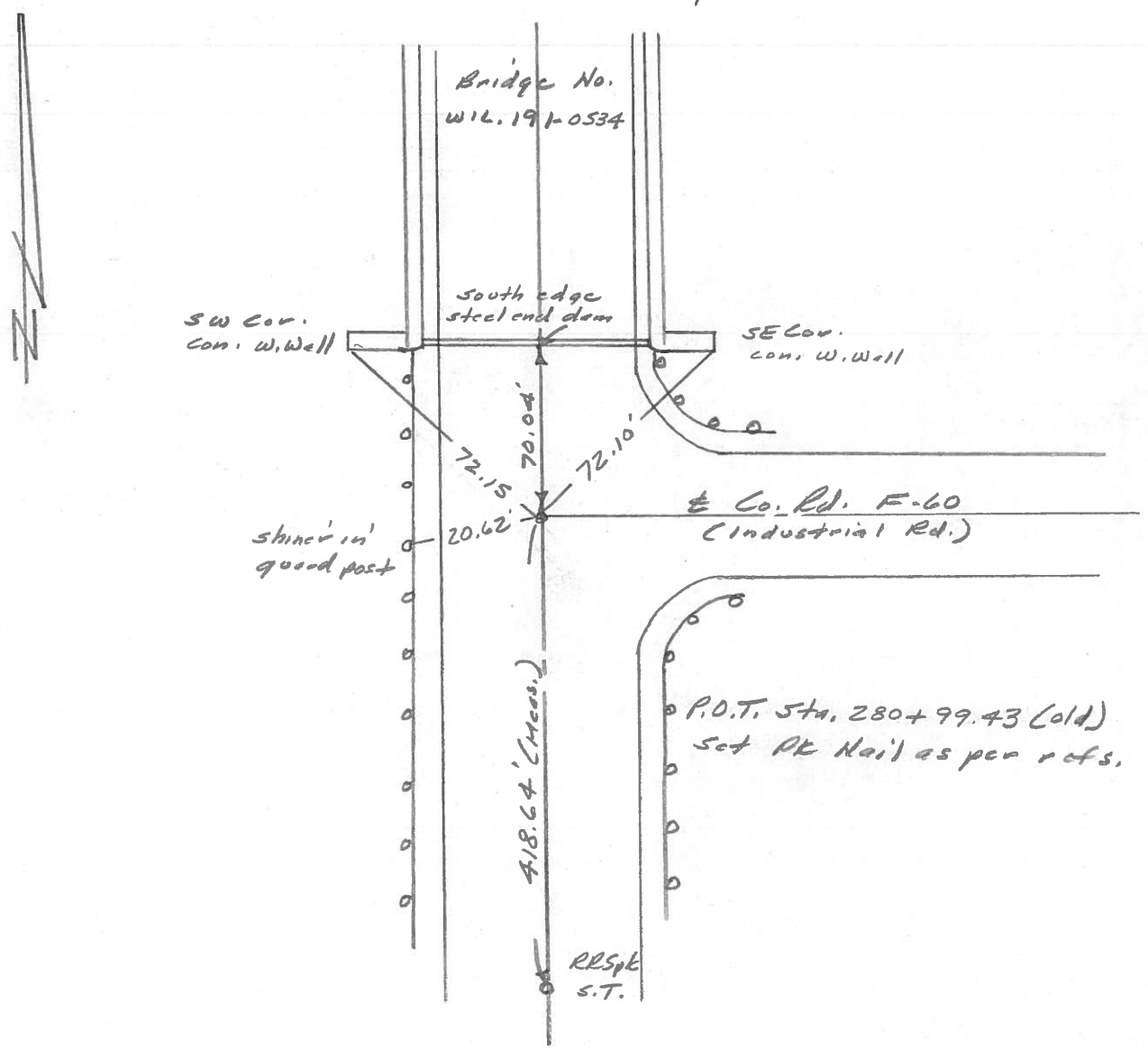
LEFT - & PAV'T. - RIGHT _____

_____ TO _____ EDGE PAVEMENT

S.L.M. 281+01



Set P.K. Nail To Surface
9-10-87



PERSONNEL TITLE PERSONNEL TITLE

Red Beach
W. Knape

COUNTY Williams DATE 7 Mar '77

S. R. 191 WEATHER

SEC Stryker - W. Unity TEMP

DESCRIPTION CONTROL POINTS LEFT CENTER LINE RIGHT JOB NO.

