

O.D.O.T. DISTRICT 2 SURVEY OFFICE (USE ONLY)

PERSONNEL

REFERENCE NO. 13

SHEET 17 OF 34

NOTES JAMES
 H.C. O'DONNELL
 R.C. JAMES

DATE 3/20/19
 WEATHER CLOUDY
 TEMP. 36°

ROUTE SR 191
 COUNTY WILLIAMS
 TOWNSHIP SPRINGFIELD
 SECTION 5
 T 6 N R 4 E

DWG BY NIESE PID 92373

TYPE MONUMENT MONBOX W/ DRILLH

ON SURFACE - ~~BELOW~~ ON

OFFSET 1.5' LT : ~~RT~~
12.4' TO RT EDGE PAVEMENT

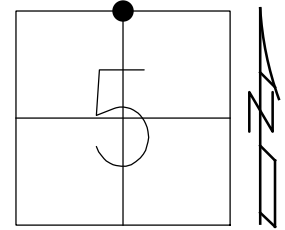
STATION: 297+49.41

HORZ. DATUM: NAD83(2011)

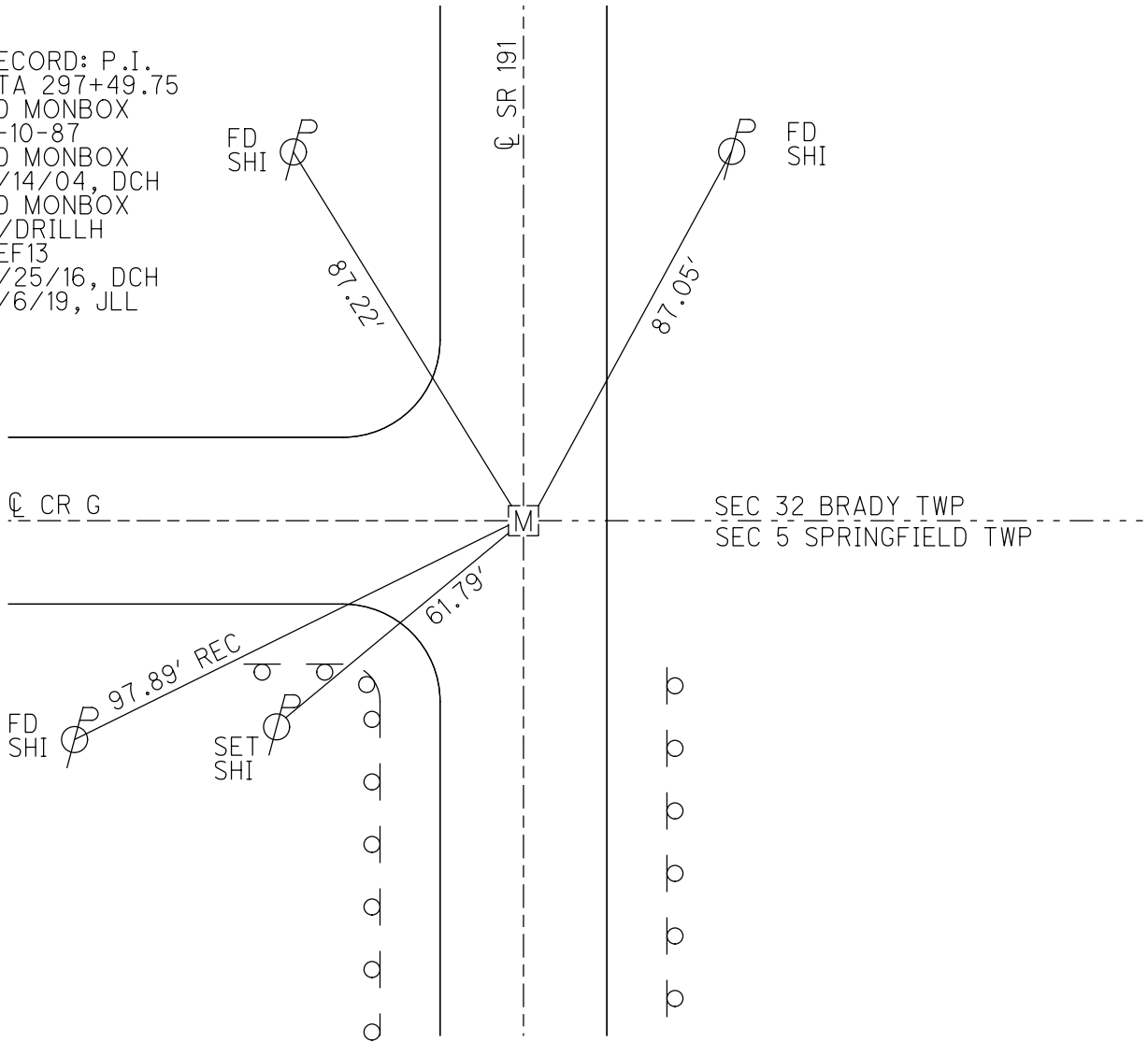
GEOID: 12A

GRID: NORTHING: 678855.235

EASTING: 1440290.141



RECORD: P.I.
 STA 297+49.75
 FD MONBOX
 9-10-87
 FD MONBOX
 6/14/04, DCH
 FD MONBOX
 W/DRILLH
 REF13
 11/25/16, DCH
 9/6/19, JLL



O.D.O.T. DISTRICT 2 SURVEY OFFICE (USE ONLY)

PERSONNEL

REFERENCE NO. 13

SHEET 17 OF 34

NOTES HUSS

DATE 6/14/04

ROUTE SR 191

H.C. HOMAN

WEATHER CLOUDY

COUNTY WILLIAMS

R.C. NUHFER

TEMP. 75°

TOWNSHIP SPRINGFIELD

SECTION 5

T 6 N R 4 E

TYPE MONUMENT MON.BOX

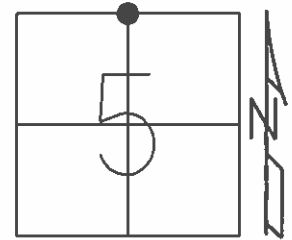
ON SURFACE - ~~BELOW~~ ON

LEFT - ~~PAV'T~~ - RIGHT 1.5'

12.4' TO RT EDGE PAVEMENT

S.L.M. 297+51

GRID: NORTHING: - EASTING: -



P.I. STA 297+49.75 (OLD)
FD. MON.BOX TO SURFACE
9-10-87

SET N&S
SE/S



87.21'

CL SR 191

FD N&S
SW/S



87.09'

CL CR G



SEC 32 BRADY TWP
SEC 5 SPRINGFIELD TWP

97.89' REC

FD N&S
NE/S



O.D.O.T. DISTRICT 2 SURVEY OFFICE

PERSONNEL

REFERENCE NO. 13

SHEET 7 OF 23

NOTES HUSS

DATE 6-14-04

ROUTE SR 191

H.C. HOMAN

WEATHER CLOUDY

COUNTY WILLIAMS

R.C. NUHFER

TEMP. 75°

TOWNSHIP SPRINGFIELD

SECTION 5

T 6 N R 4 E

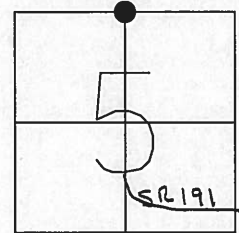
TYPE MONUMENT MONUMENT BOX

ON SURFACE ~~- BELOW~~ ON

LEFT ~~- C PAVT - RIGHT~~ 1.5' LT

12.4' TO RT EDGE PAVEMENT

S.L.M. 297+51



P.I. STA 297+49.75 (OLD)

FD. MON. BOX TO SURFACE
9-10-87

SET N&S
SE/S



87.21'

S.R. 191

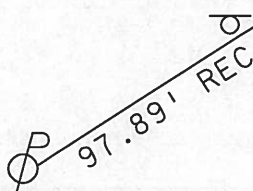
FD N&S
SW/S



87.09'

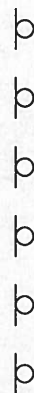
C.C.R. "G"

SEC 32 BRADY TWP
SEC 5 SPRINGFIELD TWP



FD N&S
NE/S

C PAVEMENT



O.D.O.T. DISTRICT 2 SURVEY OFFICE

PERSONNEL _____

REFERENCE NO. 13

SHEET 6 OF 22

NOTES L. Stone

H.C. D. Curtis

R.C. J. Householder

DATE 7 Jan. 87

WEATHER Cloudy

TEMP. 30°

ROUTE SR #191

COUNTY Williams

TOWNSHIP Springfield

SECTION 5

T. _____ R. _____

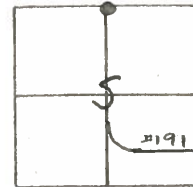
TYPE MONUMENT Mon. Box

ON SURFACE - BELOW Surface

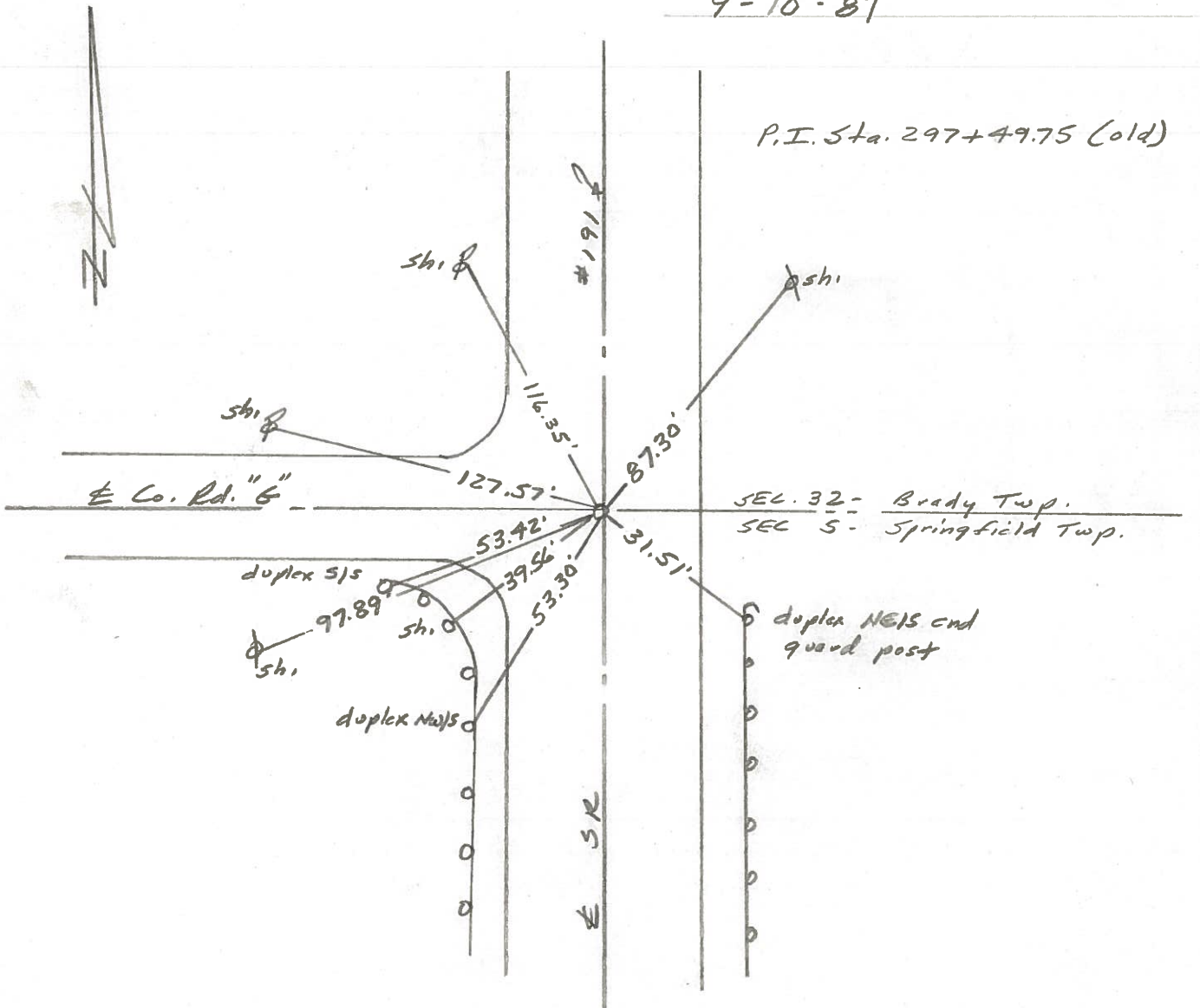
LEFT- & PAV'T. - RIGHT _____

TO _____ EDGE PAVEMENT

S.L.M. 297+51.5



Fd. Mon. Box To Surface
9-10-87



PERSONNEL	TITLE	PERSONNEL	TITLE	COUNTY	DATE
Louys				Wi	5-15-58
PESSEFALL				S. R. 191	WEATHER FAIR
WISE				FROM POLASKI RD #6	
BAIRD				SEC. NORTH TOWARD W. UNITY	TEMP. 75°

DESCRIPTION	ALIGNMENT	DETAIL - LEGEND	JOB NO.
	LEFT	CENTER LINE	RIGHT

- (A) DUG - did not find stone - Established R.R. SPIKE between corner posts
- (B) ¹³ Sta 482 + 30.12 - Found stone
 Note: - Sta. 472 + 85.0 ± = Intersection of $\&$ Existing part. from South
 (Not necessarily $\&$ of R/W)
 Sta. 492 + 11.0 ± = Intersection of $\&$ Existing part. from Northeast
 (Not necessarily $\&$ of R/W)
- (C) STA 508 + 72.28 - Found stone - Set R.R. Spk. $\Delta = 0^{\circ}02'$ LT.
- (D) ¹⁶ Sta 535 + 13.38 - Dug - Did not find Point - Established R.R. Spk. by compromising centers of fences & parts. $\Delta = 0^{\circ}01'$ RT.
 Angles at this intersection were turned to the $\&$ of existing parts. Approx 1000' to east AND WEST (and not necessarily the $\&$ of R/W)
- (E) Sta 561 + 60.44 - Dug - Did not find point. Established Iron Rod on line FJ $\&$ in line with fence line to north, thus making line IF EJ a straight line
- (F) ¹⁸ Sta 574 + 75.75 - Found stone - Set iron rod over stone and on line IEJ
- (G) ¹⁹ Sta 601 + 16.65 - Found stone - Set R.R. spike over stone - $\Delta = 0^{\circ}10'$ RT.
- (H) ²⁰ Sta 627 + 58.25 - Found spike (60 penny) Reset Iron Rod AND IS on line MN
- (I) Found Stone - IF = 1318.15
- (J) Found Stone - EJ = 2638.54
- (K) Found stone - KG = 1310.50
- (L) Found Stone - GL = 1315.80
- (M) Dug - Did not find point. Established IRON ROD ON N & S FENCE line between corner posts on line HN - produced so as to make line MHN a straight line - MH = 1317.0
- (N) Found Stone - (set iron rod over stone) HN = 1309.3

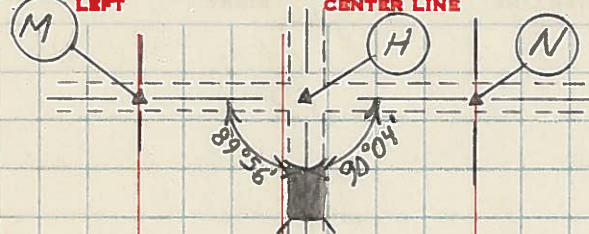
PERSONNEL TITLE PERSONNEL TITLE

Louys
 PESSEFALL
 WISE
 BAIRD

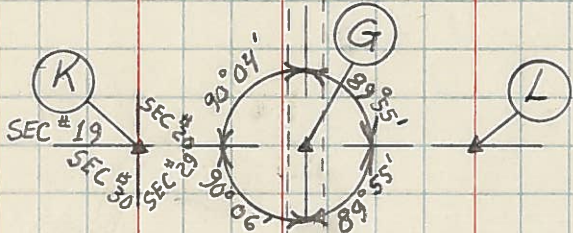
COUNTY Wi DATE 5-15-58
 # 191 WEATHER FAIR
 FROM POLASKI RD. # G
 SEC. NORTH TOWARD W. UNITY TEMP. 75°

DESCRIPTION ALIGNMENT DETAIL JOB NO.

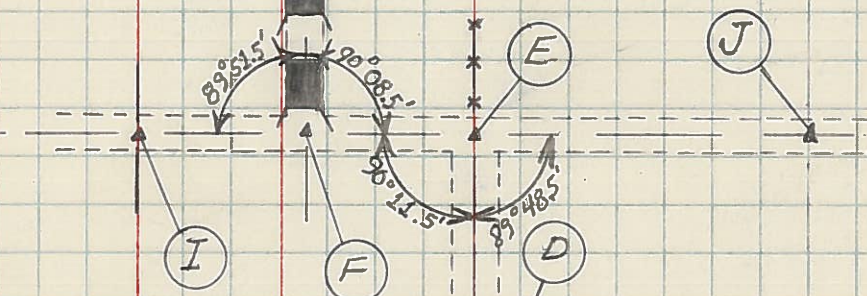
339 (20)
 627 + 58.25



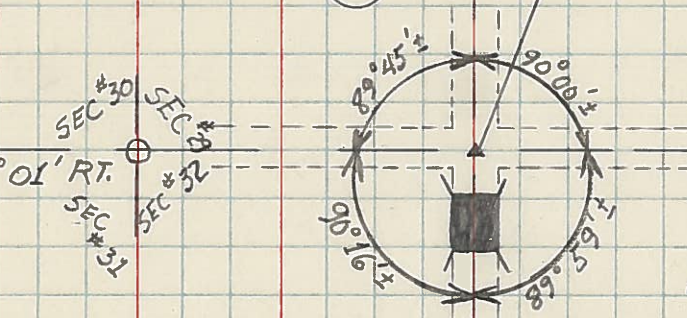
338 (19)
 601 + 16.65



337 (18)
 574 + 75.75
 561 + 60.44
 # 336

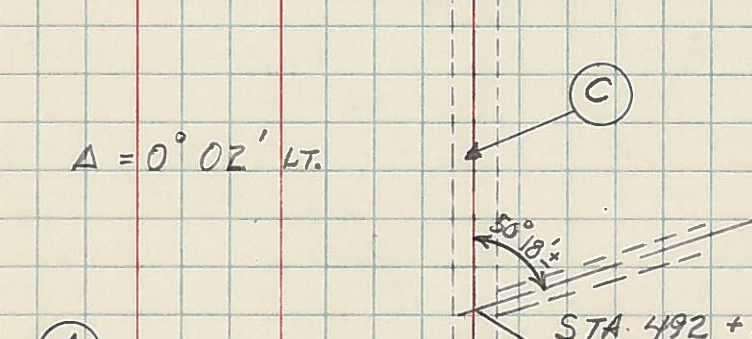


335 (16)
 535 + 13.38
 Δ = 0° 01' RT.

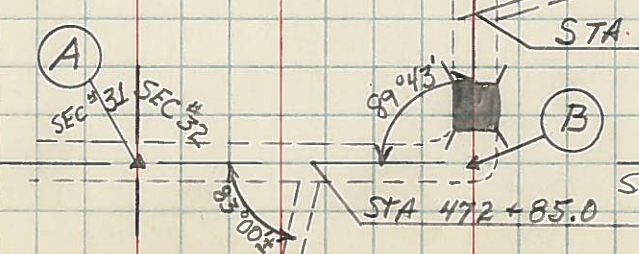


NOTE: BEARING = LINE BC
 N. 1° 50' E.

334
 508 + 72.28 Δ = 0° 02' LT.



333 (13)
 482 + 30.12



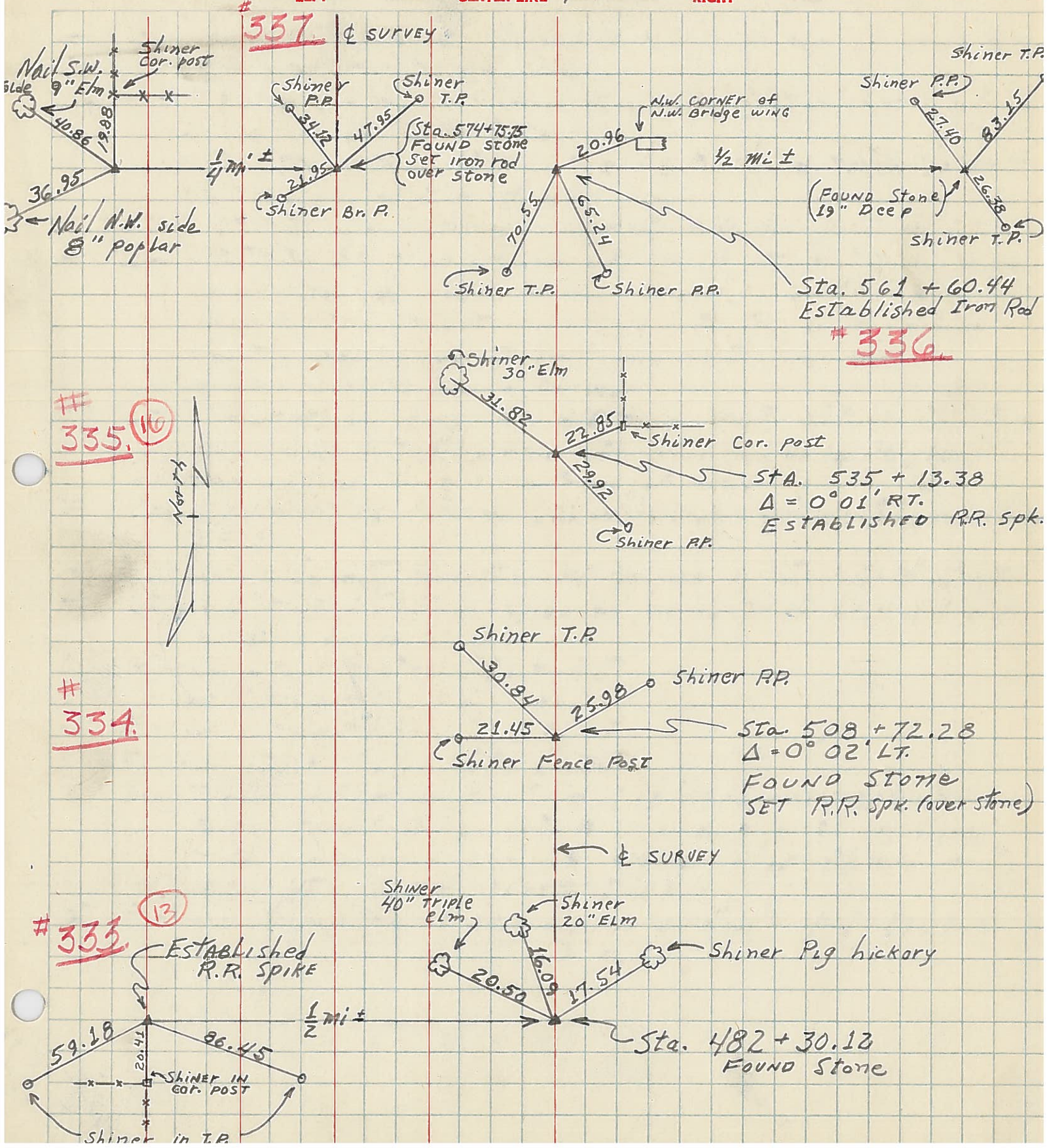
BRADY TWP.
 SPRINGFIELD TWP.

STA. 492 + 11.0
 STA. 472 + 85.0

PERSONNEL	TITLE	PERSONNEL	TITLE
Lowys			
PESSEFALL			
WISE			
BAIRD			

COUNTY Wi DATE 5-16-58
 S. R. 191 WEATHER FAIR
 FROM Pulaski Rd #G
 SEC. North toward W. Unity TEMP. _____

DESCRIPTION WITNESSES to control points JOB NO. _____



337

336

335 (10)

334

333 (13)

☩ SURVEY

☩ SURVEY

ESTABLISHED R.R. SPIKE

Sta. 482 + 30.12 FOUND Stone

Sta. 561 + 60.44 ESTABLISHED Iron Rod

Sta. 535 + 13.38 Δ = 0° 01' RT. ESTABLISHED R.R. Spk.

Sta. 508 + 72.28 Δ = 0° 02' LT. FOUND STONE SET R.R. Spk. (over stone)

Sta. 574 + 75.75 FOUND STONE SET Iron rod over stone

Nail S.W. side 9" Elm
Nail N.W. side 8" poplar

