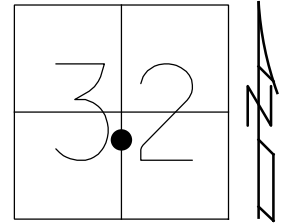


O.D.O.T. DISTRICT 2 SURVEY OFFICE (USE ONLY)

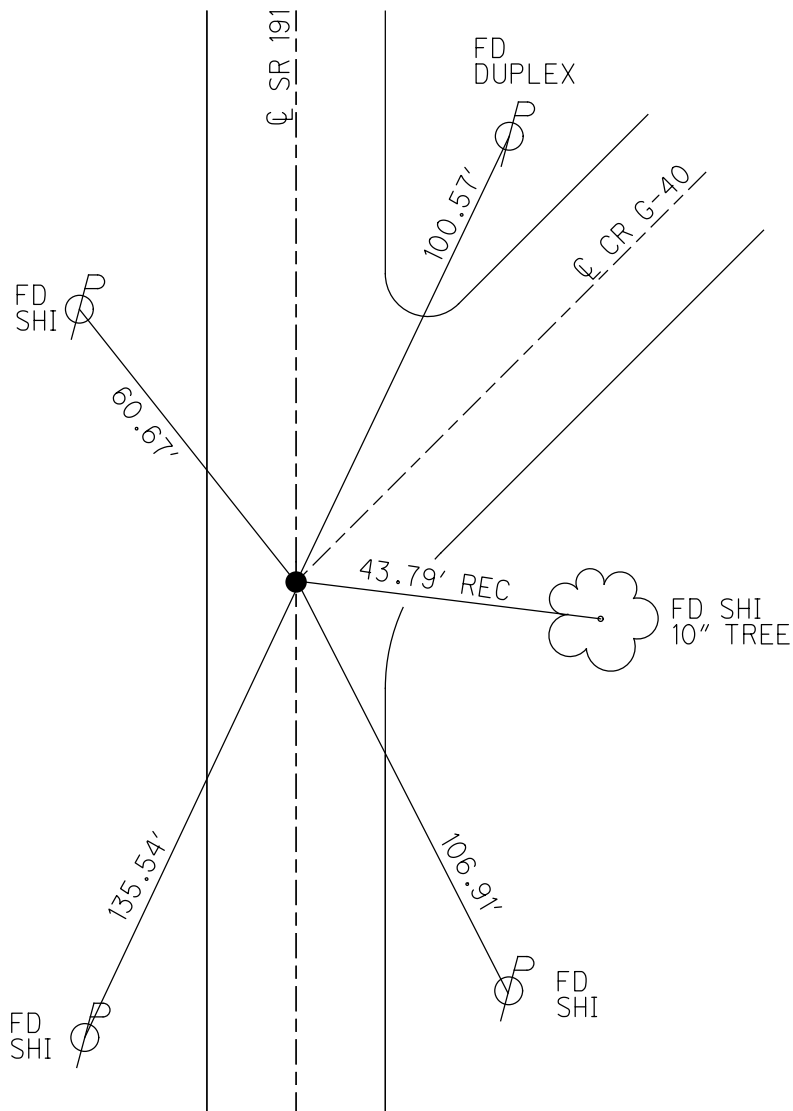
PERSONNEL \_\_\_\_\_ REFERENCE NO. 14 SHEET 18 OF 34  
 NOTES JAMES DATE 3/20/19 ROUTE SR 191  
 H.C. O'DONNELL WEATHER CLOUDY COUNTY WILLIAMS  
 R.C. JAMES TEMP. 36° TOWNSHIP BRADY  
 SECTION 32  
 DWG BY NIESE PID 92373 T 7 N R 4 E

TYPE MONUMENT MAG SHANK  
 ON SURFACE - ~~BELOW~~ ON  
 OFFSET Q PAVEMENT 0.4' LT : ~~RT~~  
10.8' TO LT EDGE PAVEMENT  
 STATION: 307+33.8



HORZ.DATUM: NAD83(2011) GEOID: 12A  
 GRID: NORTHING: 679839.363 EASTING: 1440308.554

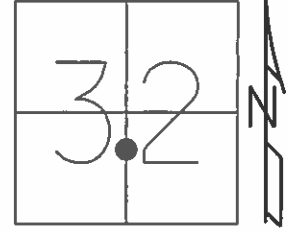
RECORD: P.O.T.  
 STA 307+34.39  
 FD LG.R.R.SPIKE  
 6/14/04, DCH  
 SET MAG SHANK  
 7-27-04, SAH  
 FD MAG SHANK  
 REF14  
 11/25/16, DCH  
 SET MAG/WASHER  
 9/6/19, JLL



**O.D.O.T. DISTRICT 2 SURVEY OFFICE (USE ONLY)**

PERSONNEL	REFERENCE NO.	<u>14</u>	SHEET	<u>18</u>	OF	<u>34</u>
NOTES	HUSS	DATE	<u>6/14/04</u>	ROUTE	<u>SR 191</u>	
H.C.	HOMAN	WEATHER	<u>CLOUDY</u>	COUNTY	<u>WILLIAMS</u>	
R.C.	NUHFER	TEMP.	<u>65°</u>	TOWNSHIP	<u>BRADY</u>	
				SECTION	<u>32</u>	
				T	<u>7</u>	N
				R	<u>4</u>	E

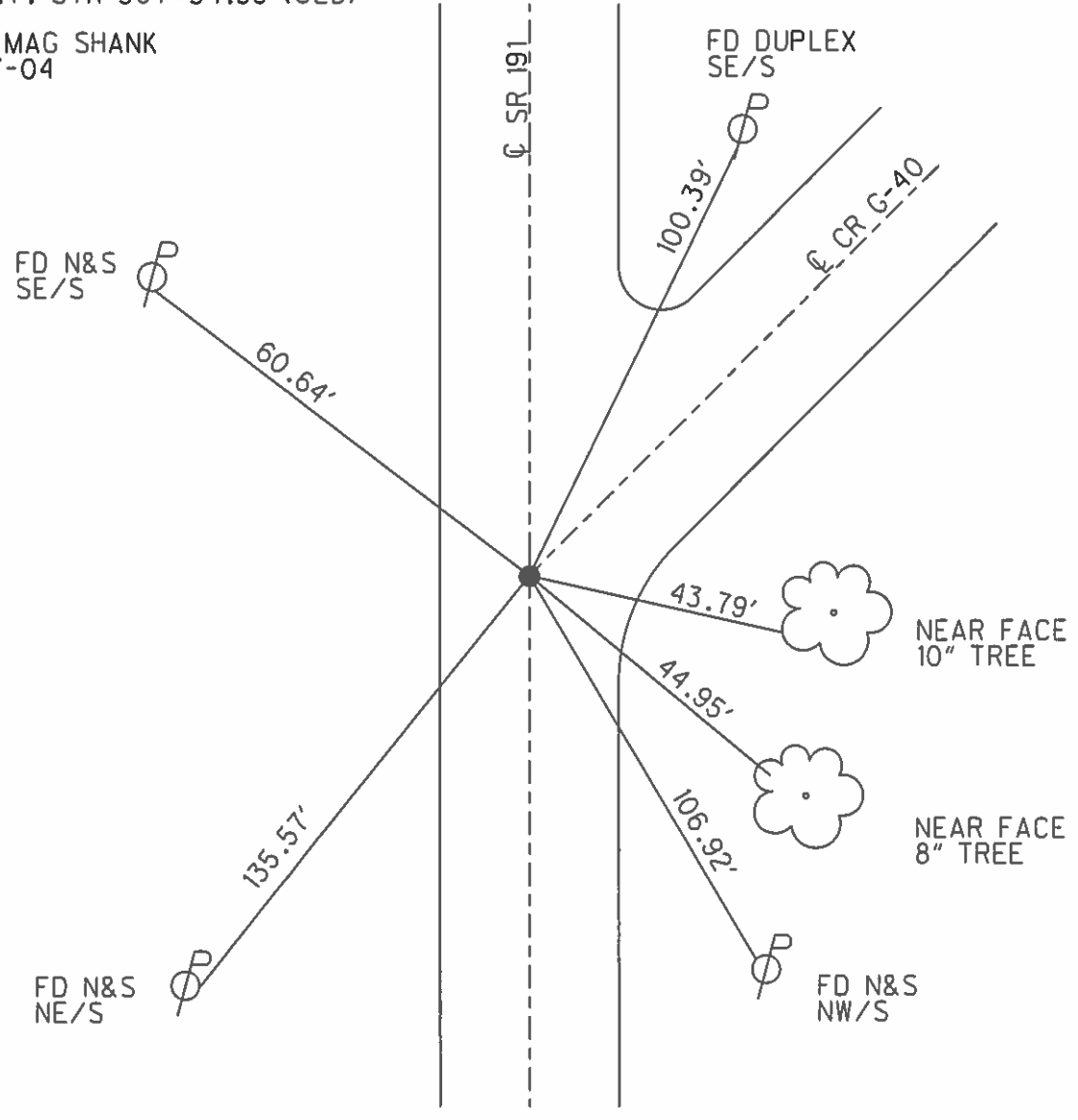
TYPE MONUMENT LG.R.R.SPIKE  
 ON SURFACE - ~~BELOW~~ ON \_\_\_\_\_  
~~LEFT - C PAV'T~~ - RIGHT 1.0'  
10.8' TO LT EDGE PAVEMENT  
 S.L.M. 307+37



GRID: NORTHING: - EASTING: -

P.O.T. STA 307+34.39 (OLD)

SET MAG SHANK  
 7-27-04  
 SAH



O.D.O.T. DISTRICT 2 SURVEY OFFICE

PERSONNEL \_\_\_\_\_

REFERENCE NO. 14

SHEET 8 OF 23

NOTES HUSS

DATE 6-14-04

ROUTE SR 191

H.C. HOMAN

WEATHER CLOUDY

COUNTY WILLIAMS

R.C. NUHFER

TEMP. 65°

TOWNSHIP BRADY

SECTION 32

T 7 N R 4 E

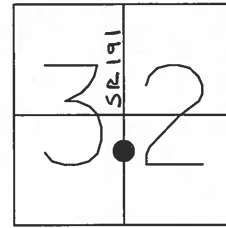
TYPE MONUMENT \_\_\_\_\_ LG RR SPIKE \_\_\_\_\_

ON SURFACE - ~~BELOW~~ \_\_\_\_\_ ON \_\_\_\_\_

~~LEFT - C PAVT~~ - RIGHT 1.0' RT

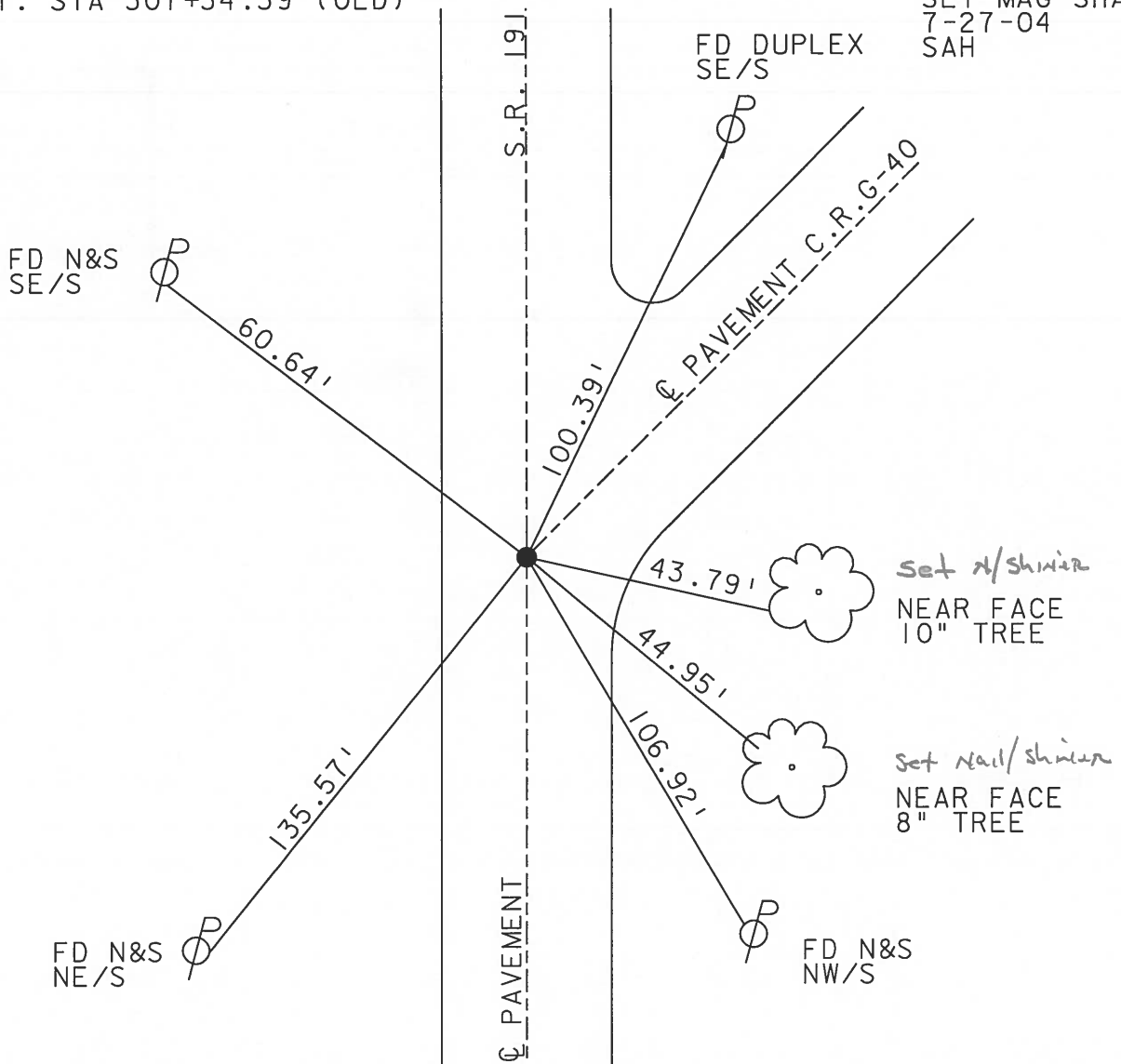
10.8' TO LT EDGE PAVEMENT

S.L.M. \_\_\_\_\_ 307+37 \_\_\_\_\_



P.O.T. STA 307+34.39 (OLD)

SET MAG SHANK  
7-27-04  
SAH



# O.D.O.T. DISTRICT 2 SURVEY OFFICE

PERSONNEL

REFERENCE NO. 14

SHEET 7 OF 22

NOTES 1. Stone

H.C. D. Curtis

R.C. J. Hoosholder

DATE 7 Jan. 87

WEATHER Cloudy

TEMP. 30°

ROUTE SR #191

COUNTY Williams

TOWNSHIP Brady

SECTION 32

T      R     

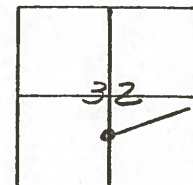
TYPE MONUMENT RR Spk.

ON SURFACE - BELOW 2" deep

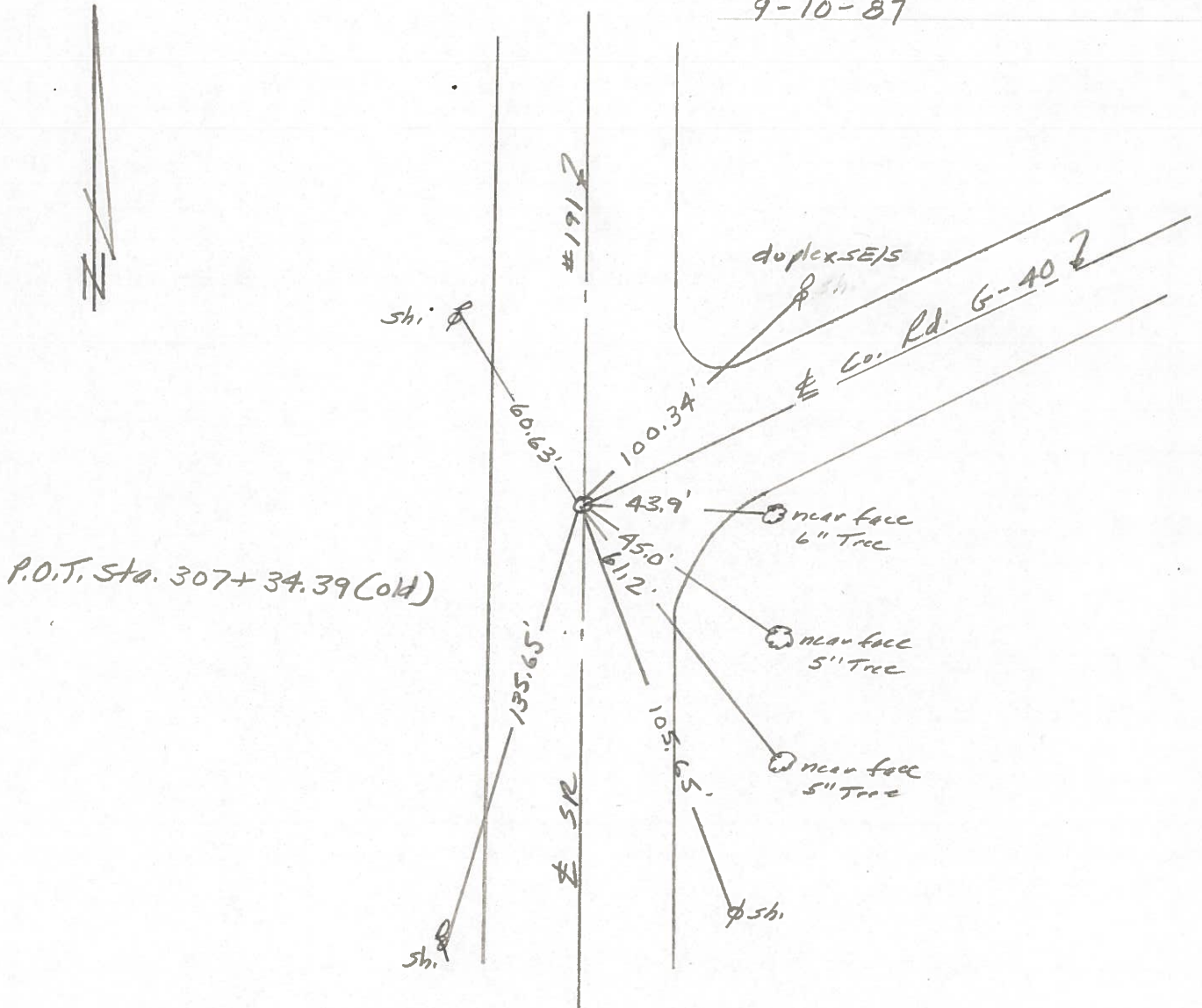
LEFT - & PAV'T. - RIGHT     

     TO      EDGE PAVEMENT

S.L.M. 307 + 36



*Set Small R.R. Spk To Surface  
9-10-87*



PERSONNEL	TITLE	PERSONNEL	TITLE
Red Beach			
W. Knape			

COUNTY Williams DATE 8 Mar. 77

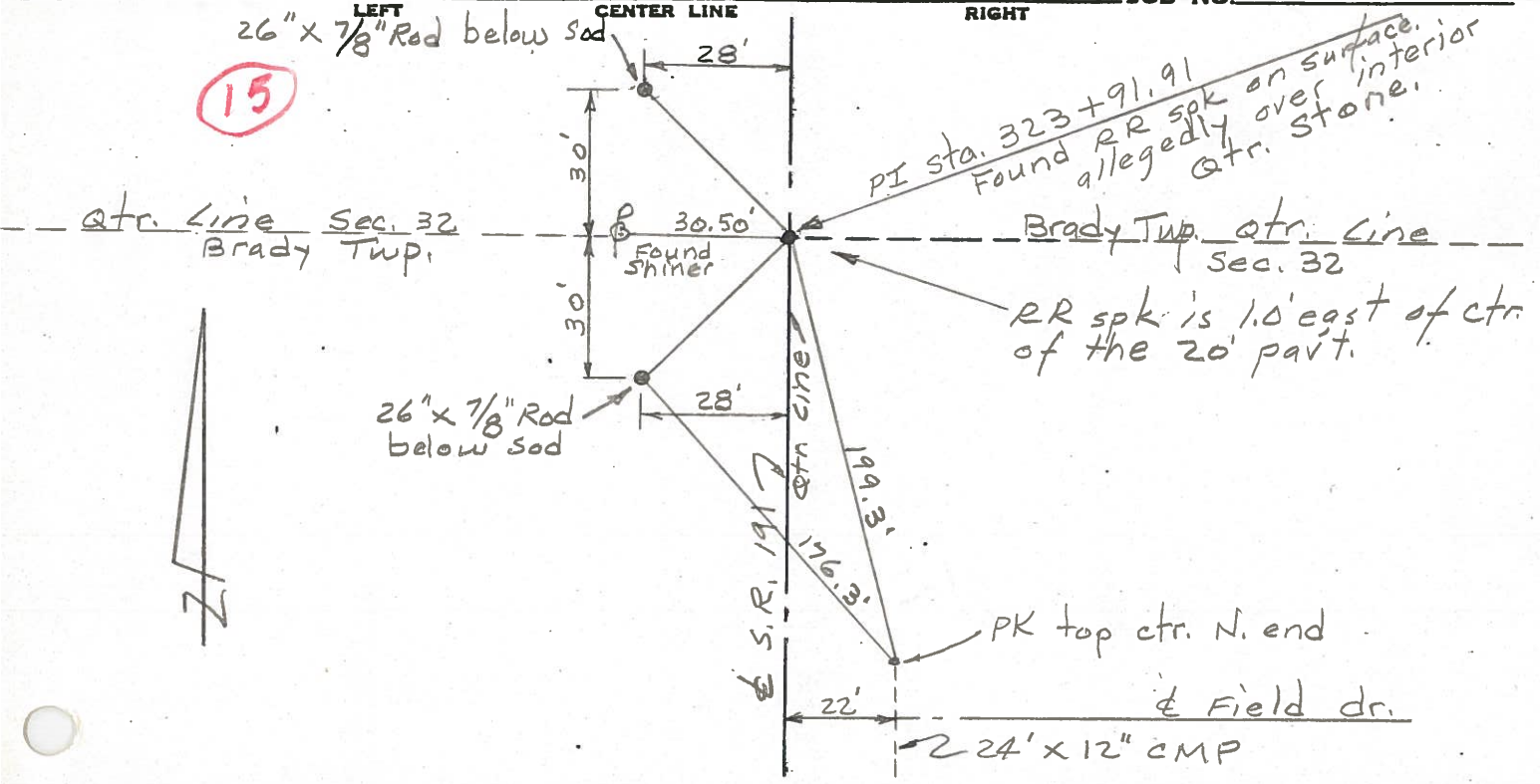
S. R. 191 WEATHER \_\_\_\_\_

SEC Stryker-W. Unity TEMP. \_\_\_\_\_

CONTROL POINTS

DESCRIPTION \_\_\_\_\_ JOB NO. \_\_\_\_\_

(15)



(14)

