

O.D.O.T. DISTRICT 2 SURVEY OFFICE (USE ONLY)

PERSONNEL

REFERENCE NO. 15

SHEET 19 OF 34

NOTES JAMES

DATE 3/20/19

ROUTE SR 191

H.C. O'DONNELL

WEATHER CLOUDY

COUNTY WILLIAMS

R.C. JAMES

TEMP. 36°

TOWNSHIP BRADY

DWG BY NIESE

PID 92373

SECTION 32

T 7 N R 4 E

TYPE MONUMENT LG.R.R.SPIKE

~~ON SURFACE~~ - BELOW 3"

OFFSET 1.5' RT : RT

9.0' TO RT EDGE PAVEMENT

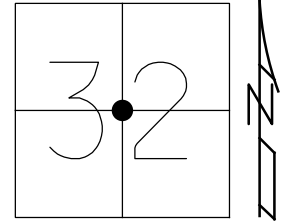
STATION: 323+90.82

HORZ.DATUM: NAD83(2011)

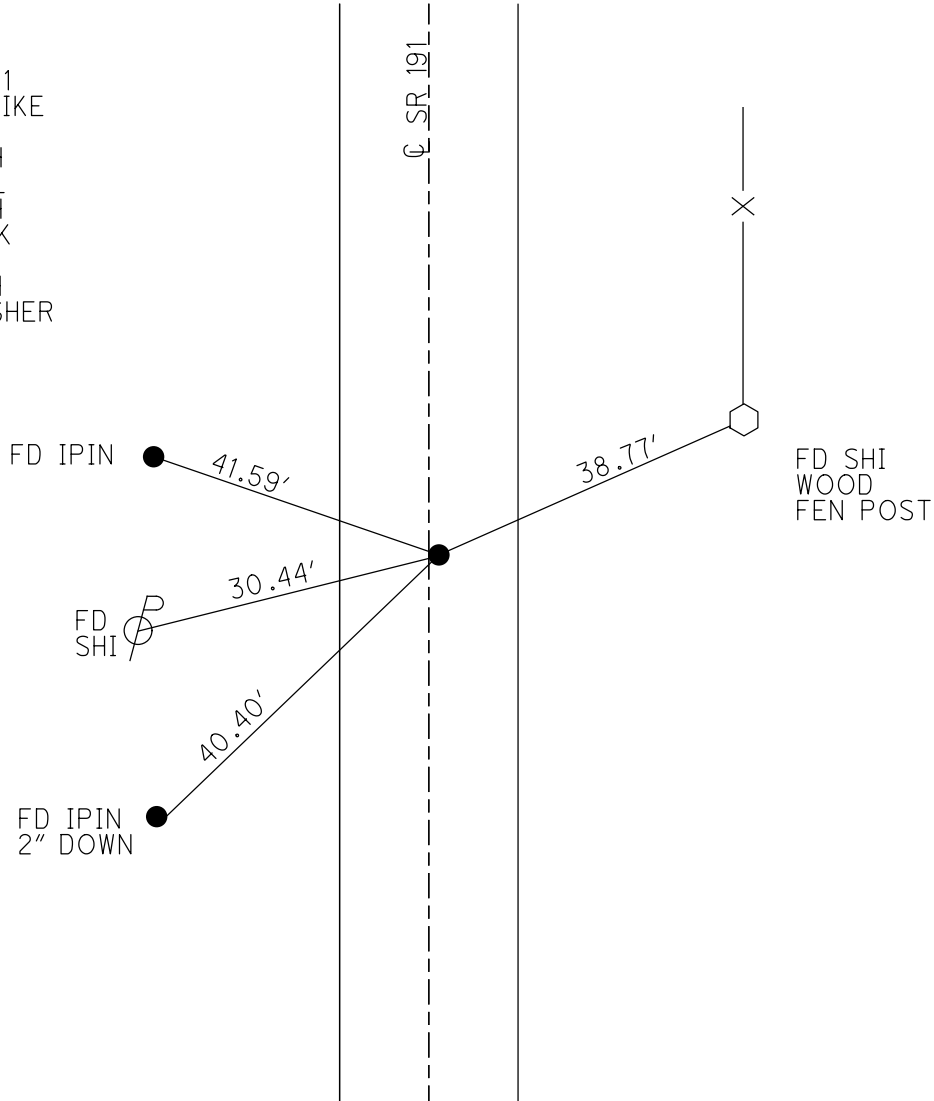
GEOID: 12A

GRID: NORTHING: 681496.023

EASTING: 1440339.764



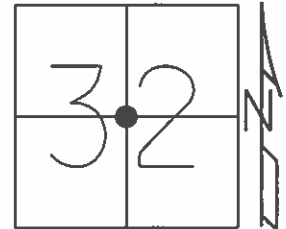
RECORD: P.I.  
 STA 323+91.91  
 FD LG.R.R.SPIKE  
 3" DOWN  
 6/14/04, DCH  
 SET MAG NAIL  
 7-27-04, SAH  
 FD MAG SHANK  
 REF15  
 11/25/16, DCH  
 SET MAG/WASHER  
 9/6/19, JLL



O.D.O.T. DISTRICT 2 SURVEY OFFICE (USE ONLY)

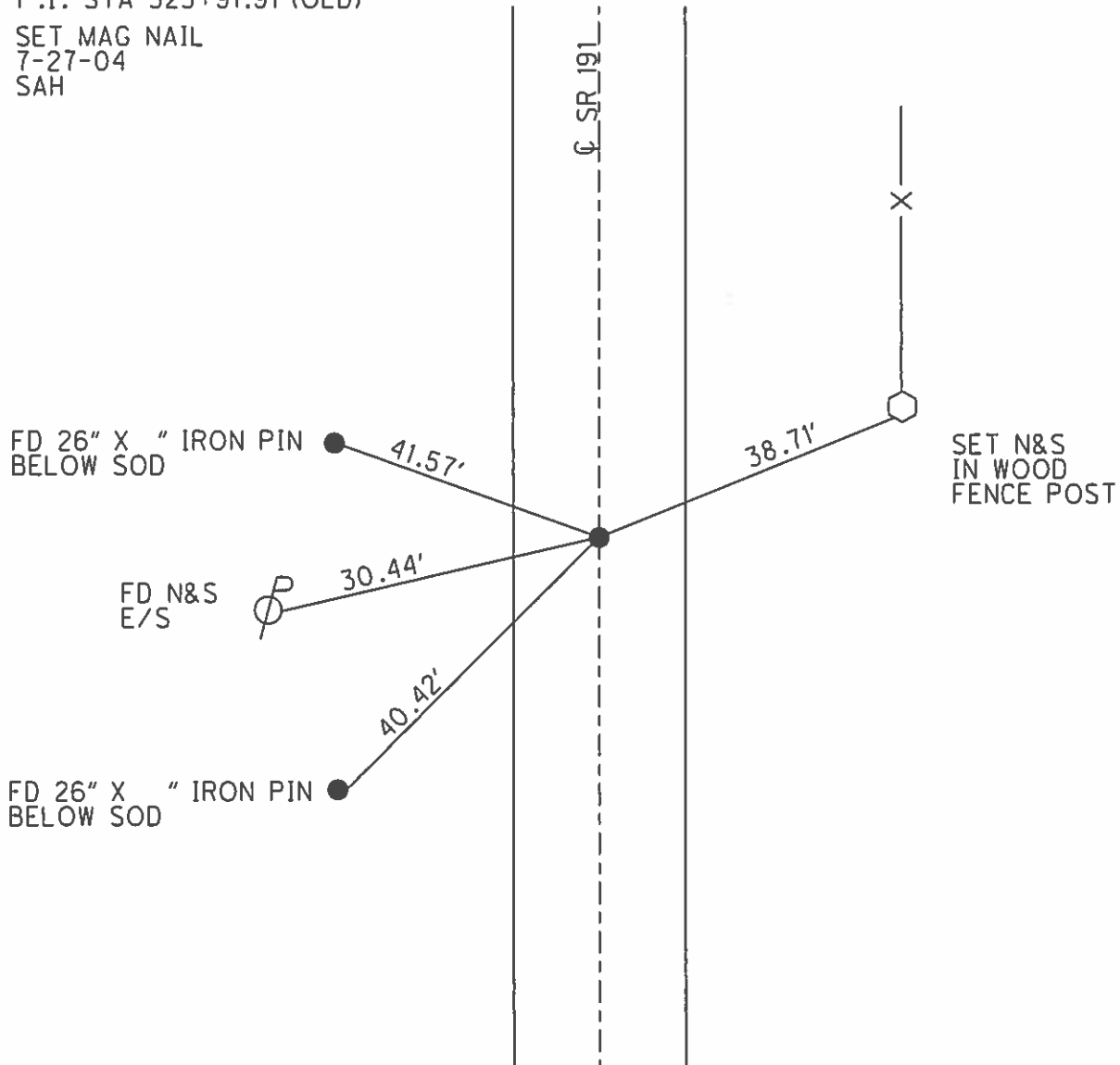
PERSONNEL \_\_\_\_\_ REFERENCE NO. 15 SHEET 19 OF 34  
 NOTES HUSS DATE 6/14/04 ROUTE SR 191  
 H.C. HUSS WEATHER CLOUDY COUNTY WILLIAMS  
 R.C. HOMAN TEMP. 64° TOWNSHIP BRADY  
 \_\_\_\_\_ SECTION 32  
 \_\_\_\_\_ T 7 N R 4 E

TYPE MONUMENT LG.R.R.SPIKE  
~~ON SURFACE~~ - BELOW 3"  
~~LEFT - C PAV'T~~ - RIGHT 1.5'  
9.0' TO RT EDGE PAVEMENT  
 S.L.M. 324+10



GRID: NORTHING: \_\_\_\_\_ - EASTING: \_\_\_\_\_ -

P.I. STA 323+91.91 (OLD)  
 SET MAG NAIL  
 7-27-04  
 SAH



O.D.O.T. DISTRICT 2 SURVEY OFFICE

PERSONNEL \_\_\_\_\_

REFERENCE NO. 15

SHEET 9 OF 23

NOTES HUSS

DATE 6-14-04

ROUTE SR 191

H.C. HUSS

WEATHER CLOUDY

COUNTY WILLIAMS

R.C. HOMAN

TEMP. 64°

TOWNSHIP BRADY

SECTION 32

T 7 N R 4 E

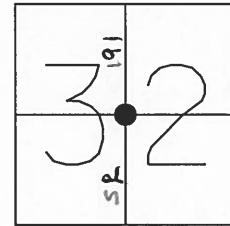
TYPE MONUMENT LG RR SPIKE

~~ON SURFACE~~ - BELOW 3"

~~LEFT - C PAVT~~ - RIGHT 1.5' RT

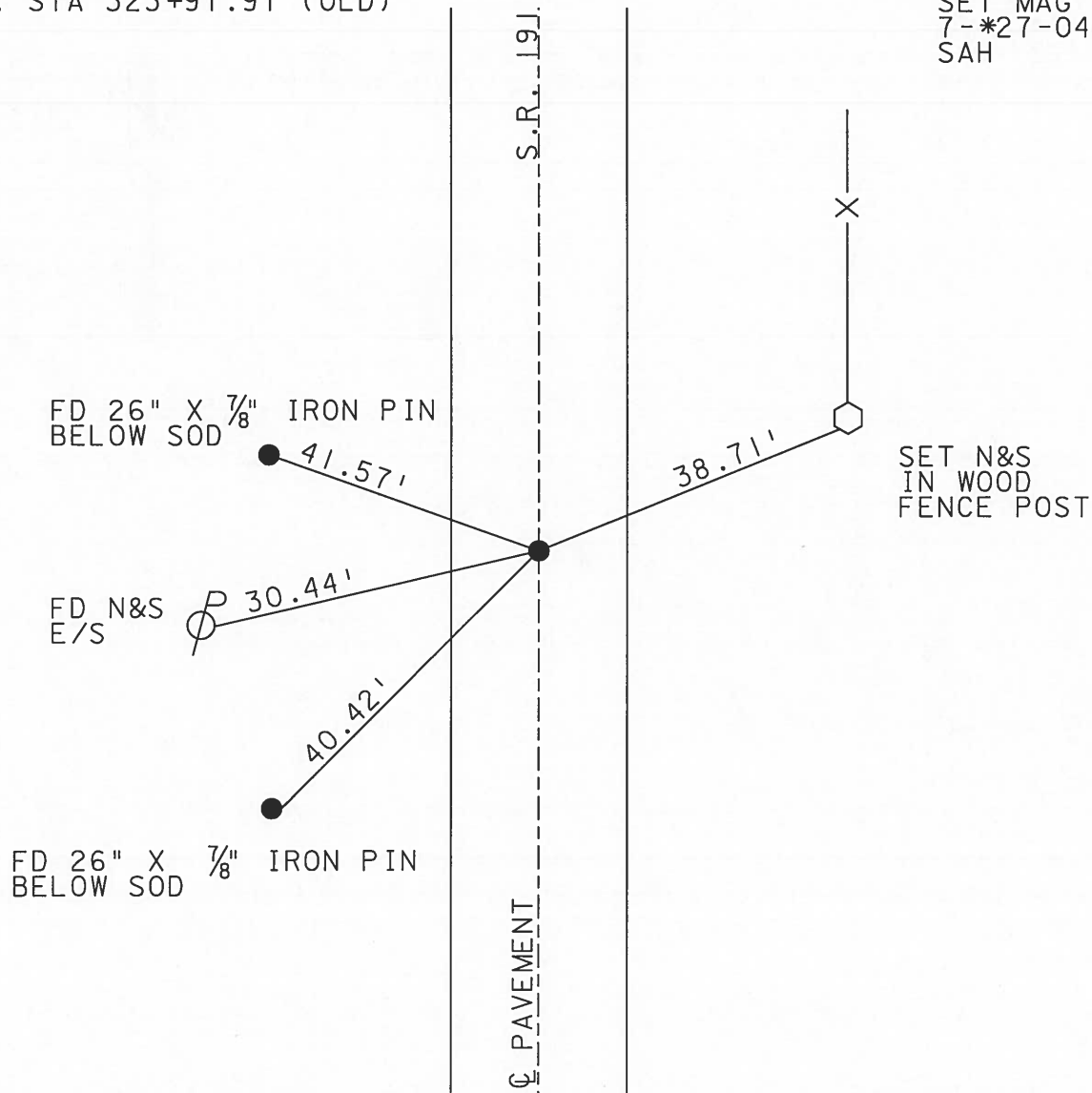
9.0 TO RT EDGE PAVEMENT

S.L.M. 324+10



P.I. STA 323+91.91 (OLD)

SET MAG SHANK  
7-\*27-04  
SAH



# O.D.O.T. DISTRICT 2 SURVEY OFFICE

PERSONNEL \_\_\_\_\_

REFERENCE NO. 15

SHEET 8 OF 22

NOTES 1. Stone

H.C. D. Curtis

R.C. J. Housholder

DATE 8 Jan. 87

WEATHER Cloudy

TEMP. 28°

ROUTE SR #191

COUNTY Williams

TOWNSHIP Brady

SECTION 32

T.      R.     

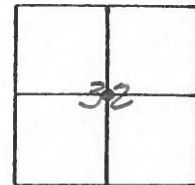
TYPE MONUMENT RR Spk.

ON SURFACE - BELOW 2" deep

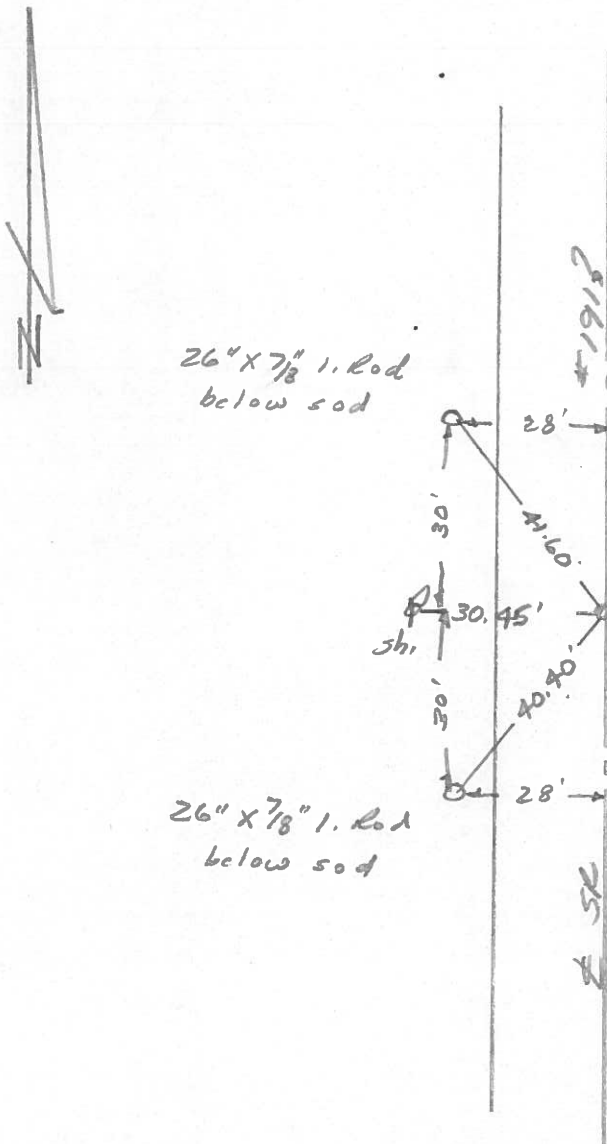
LEFT- & PAV'T. - RIGHT \_\_\_\_\_

\_\_\_\_ TO \_\_\_\_\_ EDGE PAVEMENT

S.L.M. 323+94



Set Small R.P. Spk. To Surface  
9-10-87



P.I. Sta. 323+91.91 (old)

PERSONNEL TITLE PERSONNEL TITLE

Red Beach  
W. Knape

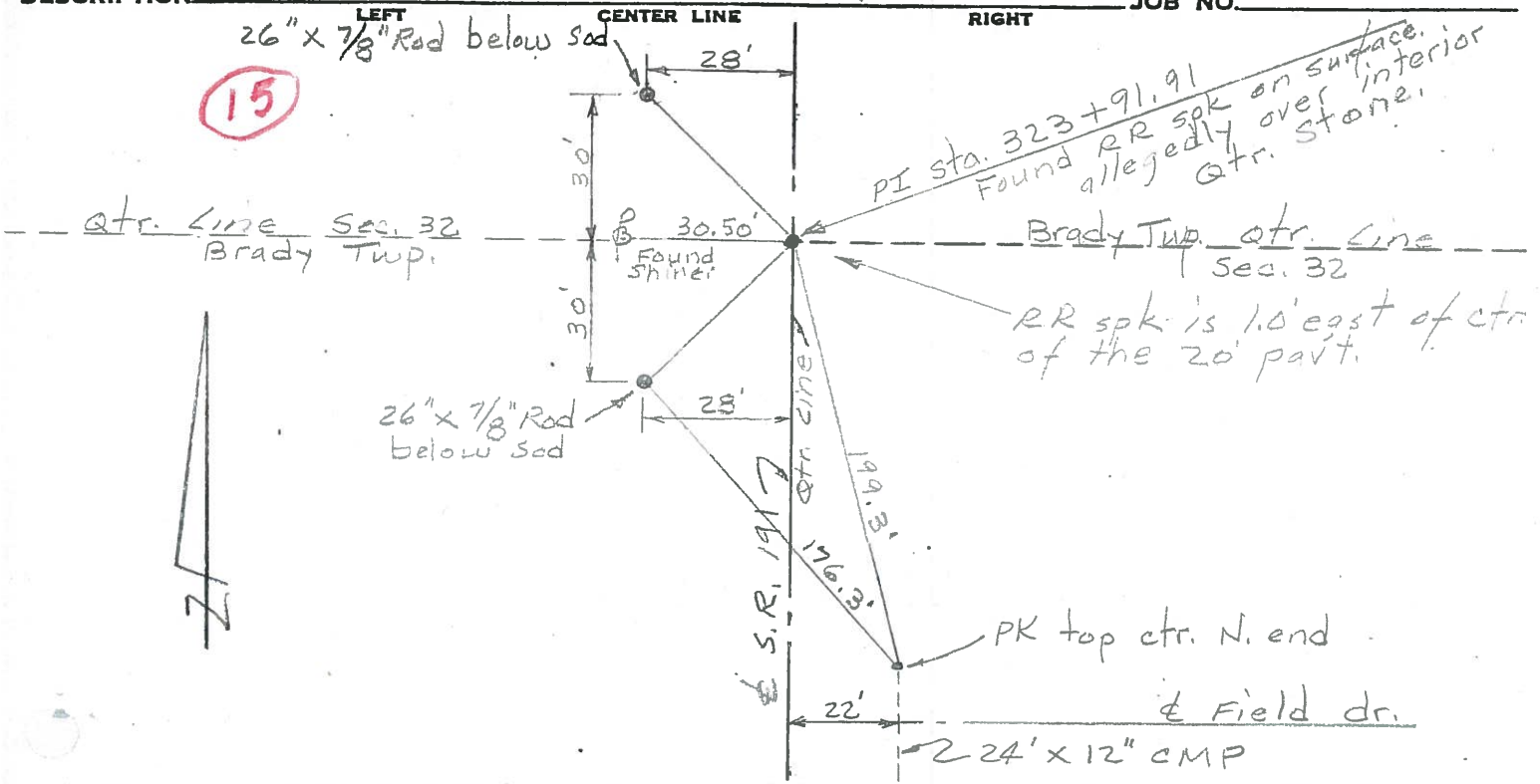
COUNTY williams DATE 8 Mar 77

S. R. 191 WEATHER \_\_\_\_\_

SEC. Stryker - W. Unity TEMP. \_\_\_\_\_

DESCRIPTION CONTROL POINTS JOB NO. \_\_\_\_\_

(15)



(14)

