

O.D.O.T. DISTRICT 2 SURVEY OFFICE (USE ONLY)

PERSONNEL

REFERENCE NO. 16

SHEET 20 OF 34

NOTES RHOADES
 H.C. O'DONNELL
 R.C. JAMES

DATE 3/21/19
 WEATHER HAZE
 TEMP. 42°

ROUTE SR 191
 COUNTY WILLIAMS
 TOWNSHIP BRADY
 SECTION 32
 T 7 N R 4 E

DWG BY NIESE PID 92373

TYPE MONUMENT SM.R.R.SPIKE

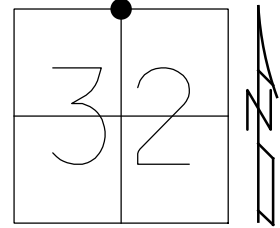
~~ON SURFACE~~ - BELOW 2"

OFFSET 0.5' LT : RT
 - TO - EDGE PAVEMENT

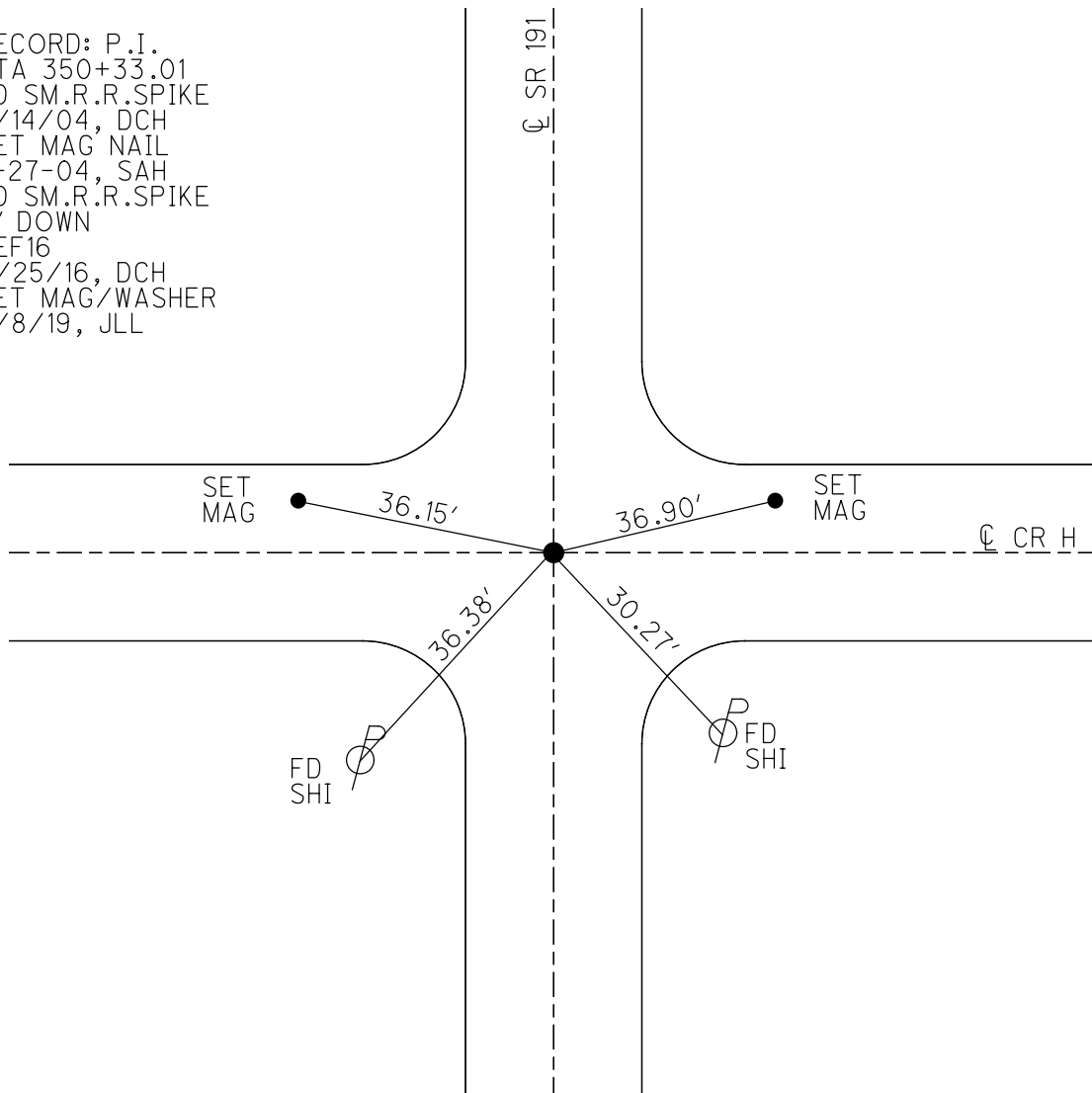
STATION: 350+31.29

HORZ.DATUM: NAD83(2011) GEOID: 12A

GRID: NORTHING: 684135.899 EASTING: 1440387.746



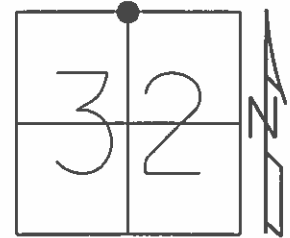
RECORD: P.I.
 STA 350+33.01
 FD SM.R.R.SPIKE
 6/14/04, DCH
 SET MAG NAIL
 7-27-04, SAH
 FD SM.R.R.SPIKE
 2" DOWN
 REF16
 11/25/16, DCH
 SET MAG/WASHER
 8/8/19, JLL



O.D.O.T. DISTRICT 2 SURVEY OFFICE (USE ONLY)

PERSONNEL _____ REFERENCE NO. 16 SHEET 20 OF 34
 NOTES HOMAN DATE 6/14/04 ROUTE SR 191
 H.C. HUSS WEATHER CLOUDY COUNTY WILLIAMS
 R.C. NUHFER TEMP. 65° TOWNSHIP BRADY
 _____ SECTION 32
 _____ T 7 N R 4 E

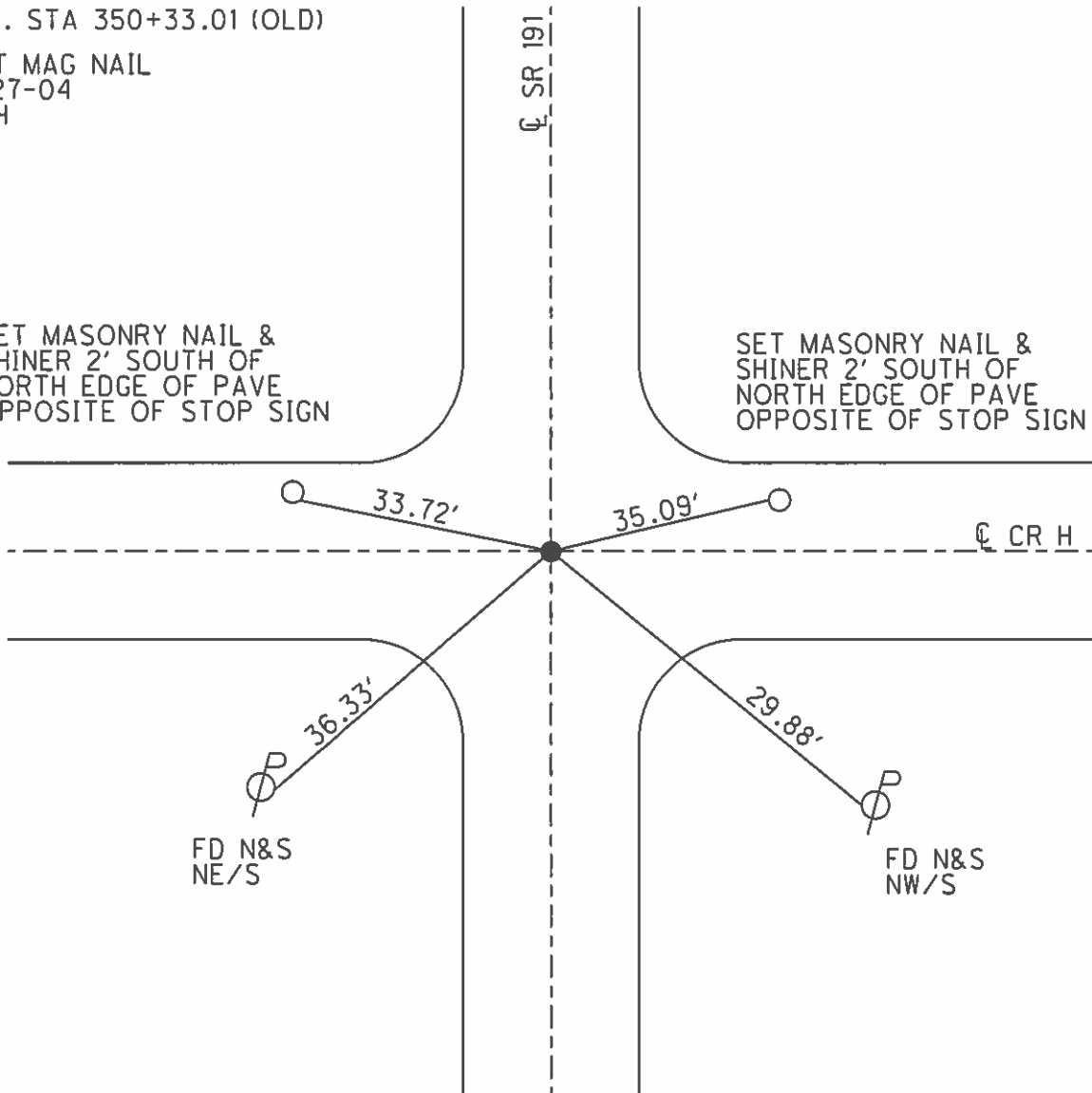
TYPE MONUMENT SM.R.R.SPIKE
 ON SURFACE - ~~BELOW~~ ON _____
~~LEFT - C PAV'T~~ - RIGHT 0.5'
 - TO - EDGE PAVEMENT
 S.L.M. 350+35
 GRID: NORTHING: _____ EASTING: _____



P.I. STA 350+33.01 (OLD)
 SET MAG NAIL
 7-27-04
 SAH

SET MASONRY NAIL &
 SHINER 2' SOUTH OF
 NORTH EDGE OF PAVE
 OPPOSITE OF STOP SIGN

SET MASONRY NAIL &
 SHINER 2' SOUTH OF
 NORTH EDGE OF PAVE
 OPPOSITE OF STOP SIGN



O.D.O.T. DISTRICT 2 SURVEY OFFICE

PERSONNEL _____

REFERENCE NO. 16

SHEET 10 OF 23

NOTES HOMAN

DATE 6-14-04

ROUTE SR 191

H.C. HUSS

WEATHER CLOUDY

COUNTY WILLIAMS

R.C. NUHFER

TEMP. 65°

TOWNSHIP BRADY

SECTION 32

T 7 N R 4 E

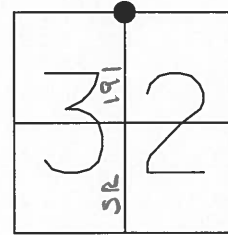
TYPE MONUMENT SM RR SPIKE

ON SURFACE - ~~BELOW~~ ON

~~LEFT - C PAVT~~ - RIGHT 0.5' RT

TO EDGE PAVEMENT

S.L.M. 350+35

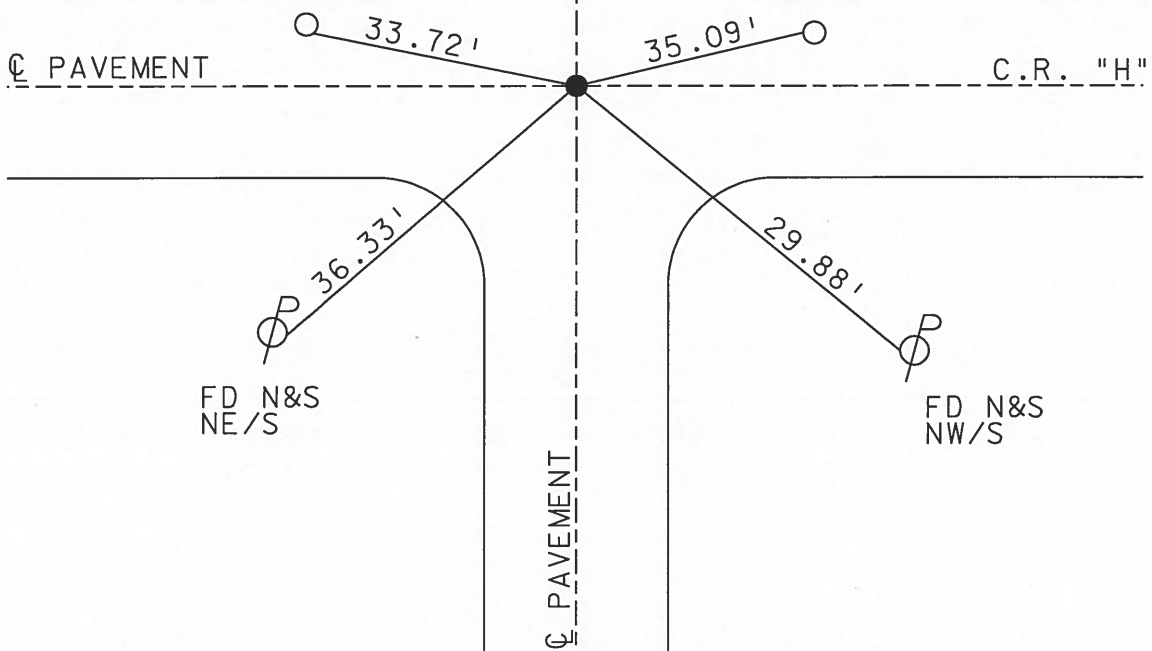


P.I. STA 350+33.01 (OLD)

SET MAG SHANK
7-27-04
SAH

SET MASONRY NAIL &
SHINER 2' SOUTH OF
NORTH EDGE OF PAVE
OPPOSITE OF STOP SIGN

SET MASONRY NAIL &
SHINER 2' SOUTH OF
NORTH EDGE OF PAVE
OPPOSITE OF STOP SIGN



O.D.O.T. DISTRICT 2 SURVEY OFFICE

PERSONNEL

REFERENCE NO. 16

SHEET 9 OF 22

NOTES 1. Stone

H.C. D. Curtis

R.C. J. Hoeholder

DATE 8 Jan. 87

WEATHER Cloudy

TEMP. 28°

ROUTE SR #191

COUNTY Williams

TOWNSHIP Brady

SECTION 32

T. R.

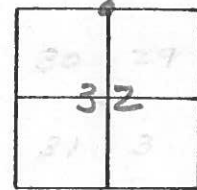
TYPE MONUMENT RR Spk.

ON SURFACE - BELOW 2" deep

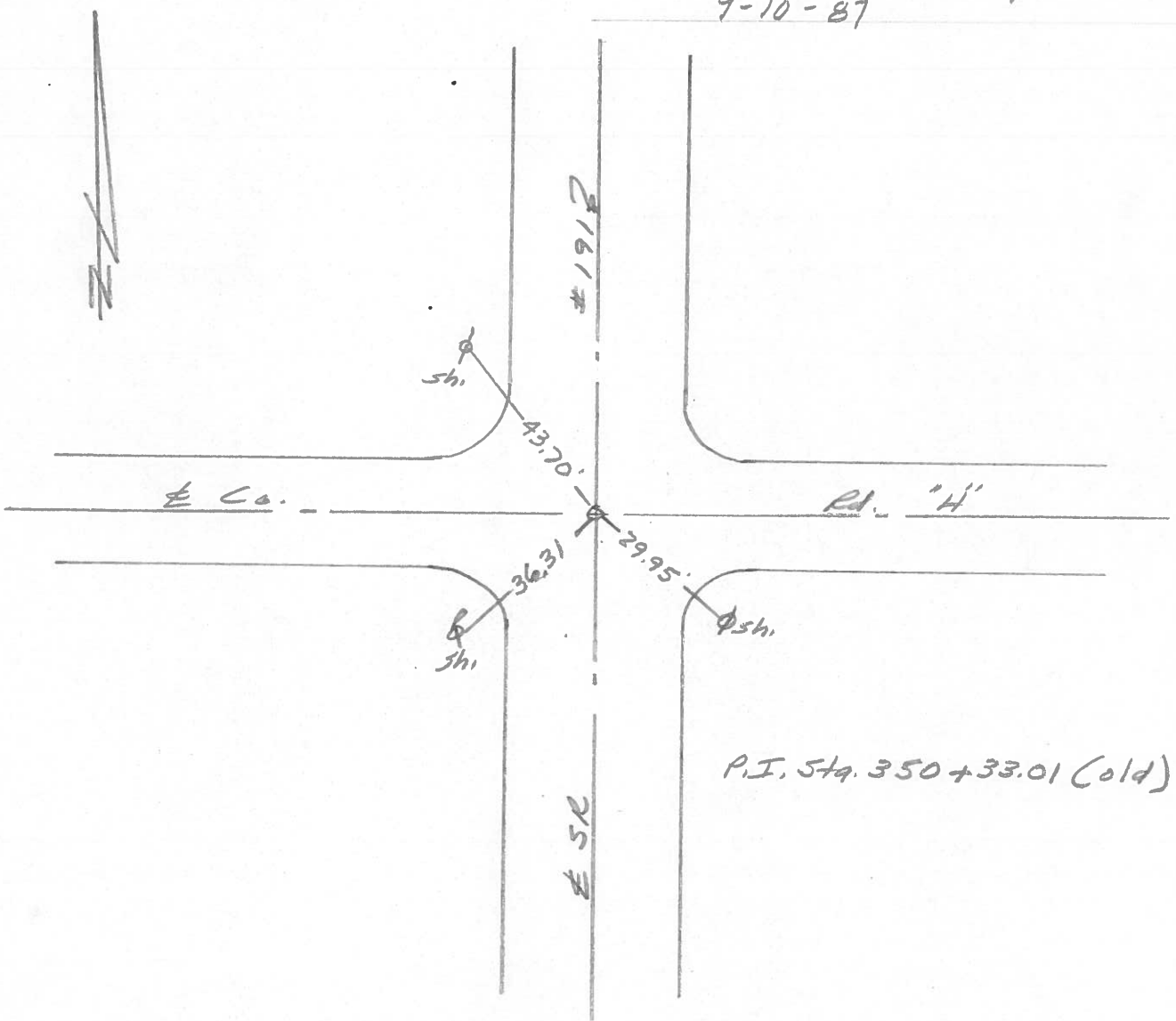
LEFT - ☉ PAV'T. - RIGHT

 TO EDGE PAVEMENT

S.L.M. 350+34.5



*Set Small R.R. Spk. To Surface
9-10-87*



PERSONNEL TITLE PERSONNEL TITLE

Red Beach
W. Knape

COUNTY Williams

DATE 8 Mar 77

S. R. 191

WEATHER _____

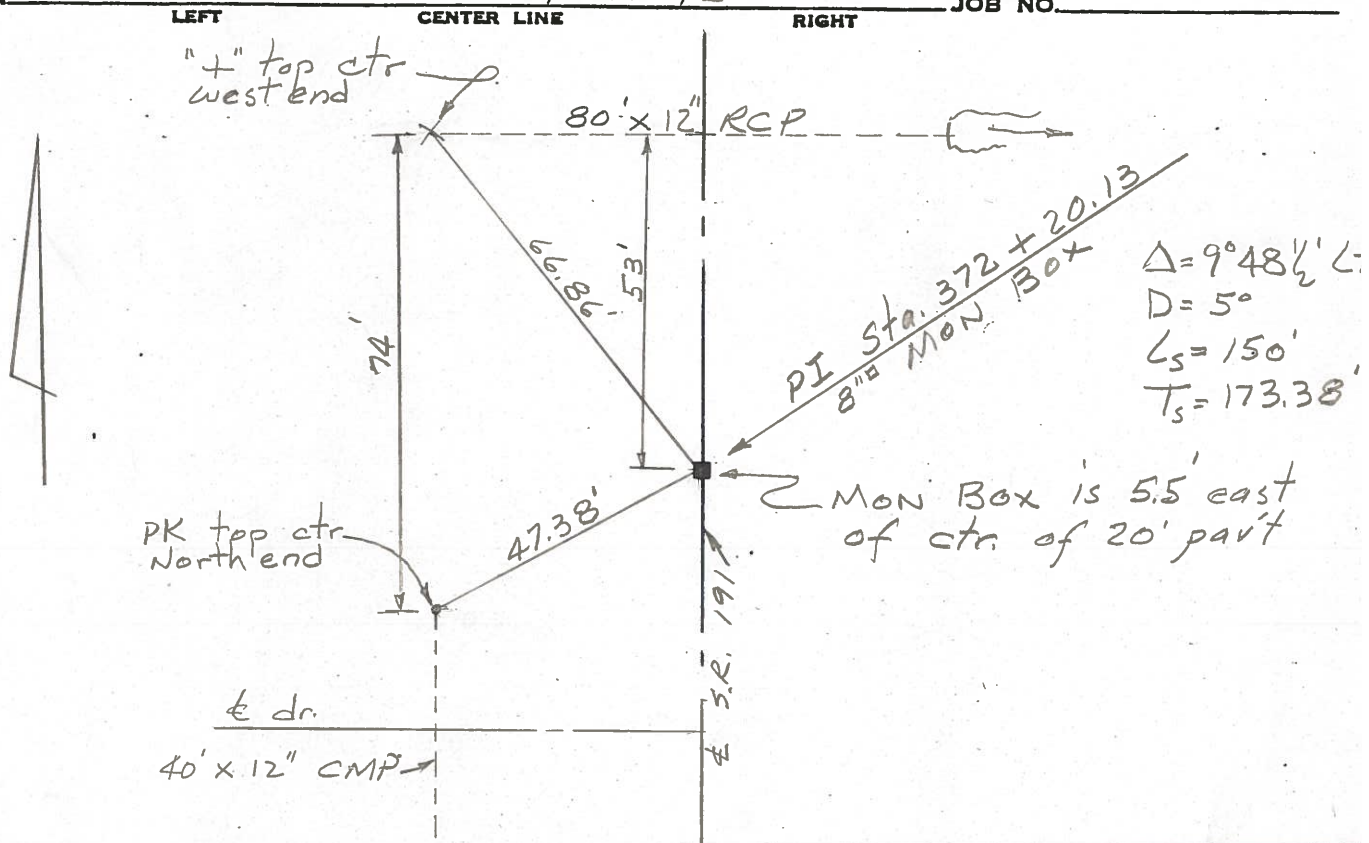
SEC. Stryker-W. Unity

TEMP _____

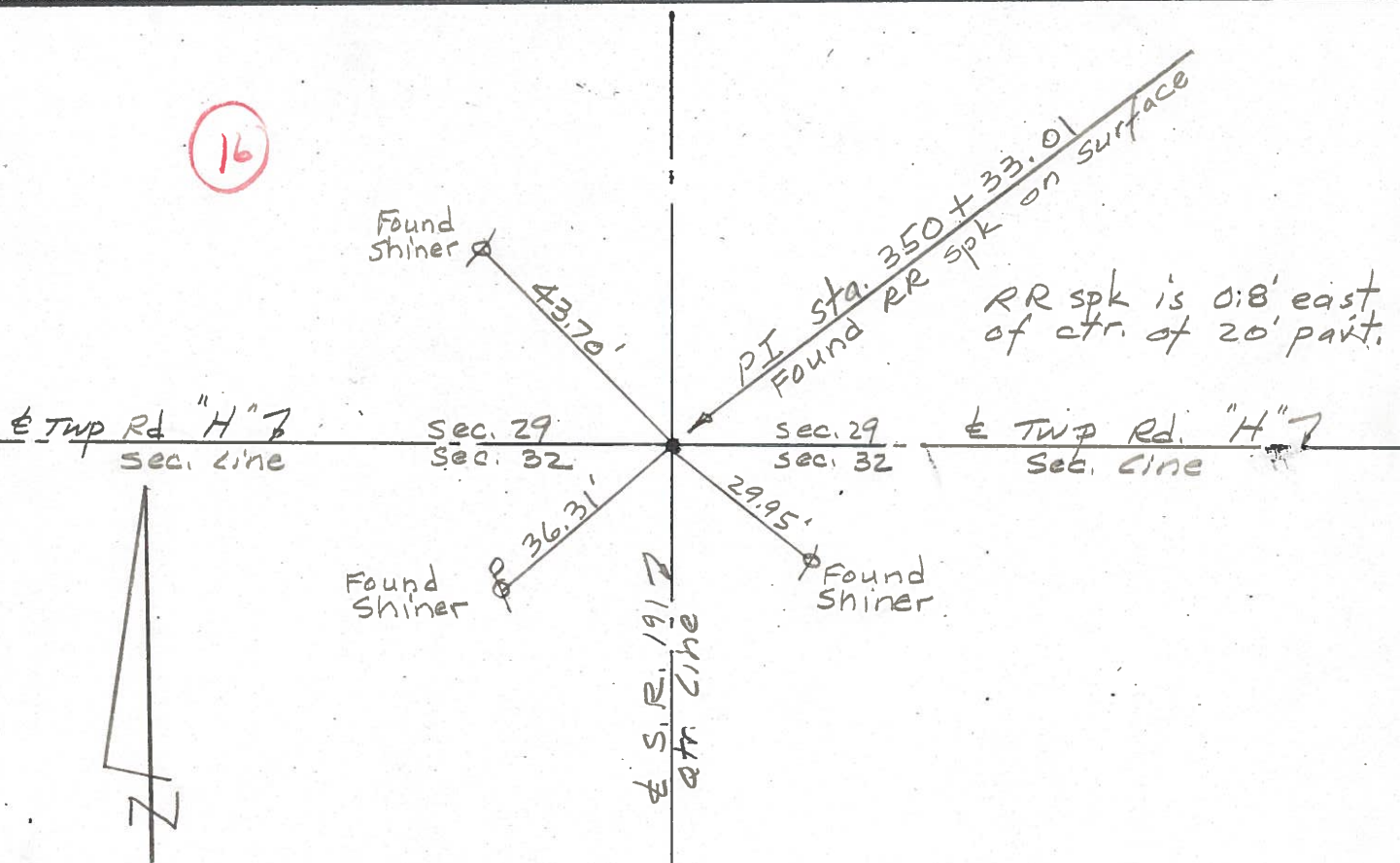
DESCRIPTION

CONTROL POINTS

JOB NO. _____

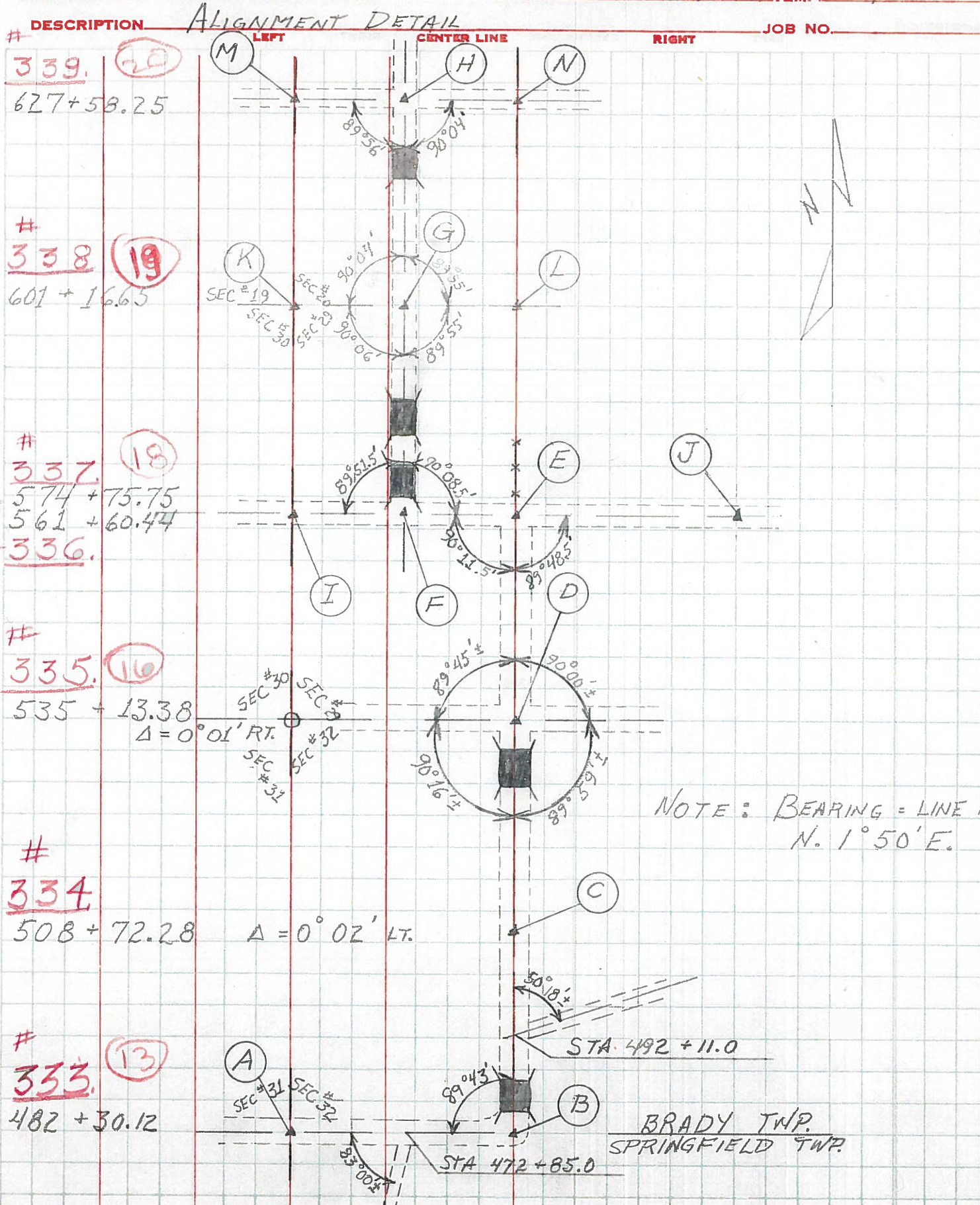


16



PERSONNEL TITLE PERSONNEL TITLE
 Louys _____
 PESSEBALL _____
 WISE _____
 BAIRD _____

COUNTY Wi DATE 5-15-58
 S. R. # 191 WEATHER FAIR
 FROM POLASKI RD. # G
 SEC. NORTH TOWARD W. UNITY TEMP. 75°



PERSONNEL	TITLE	PERSONNEL	TITLE	COUNTY	DATE	WEATHER	TEMP.
Lowys				Wi	5-16-58	FAIR	
PESSEFALL				S. R. 191			
WISE				FROM Pulaski Rd #6			
BAIRD				SEC. North toward W. Unity			
DESCRIPTION				WITNESSES to control points		JOB NO.	

