

O.D.O.T. DISTRICT 2 SURVEY OFFICE (USE ONLY)

PERSONNEL

REFERENCE NO. 17

SHEET 22 OF 34

NOTES RHOADES

DATE 3/21/19

ROUTE SR 191

H.C. O'DONNELL

WEATHER HAZE

COUNTY WILLIAMS

R.C. JAMES

TEMP. 42°

TOWNSHIP BRADY

DWG BY NIESE PID 92373

SECTION 29

T 7 N R 4 E

TYPE MONUMENT MONBOX

ON SURFACE - ~~BELOW~~ ON

OFFSET 0.5' \bar{C} PAVEMENT LT : ~~RT~~

9.4' TO RT EDGE PAVEMENT

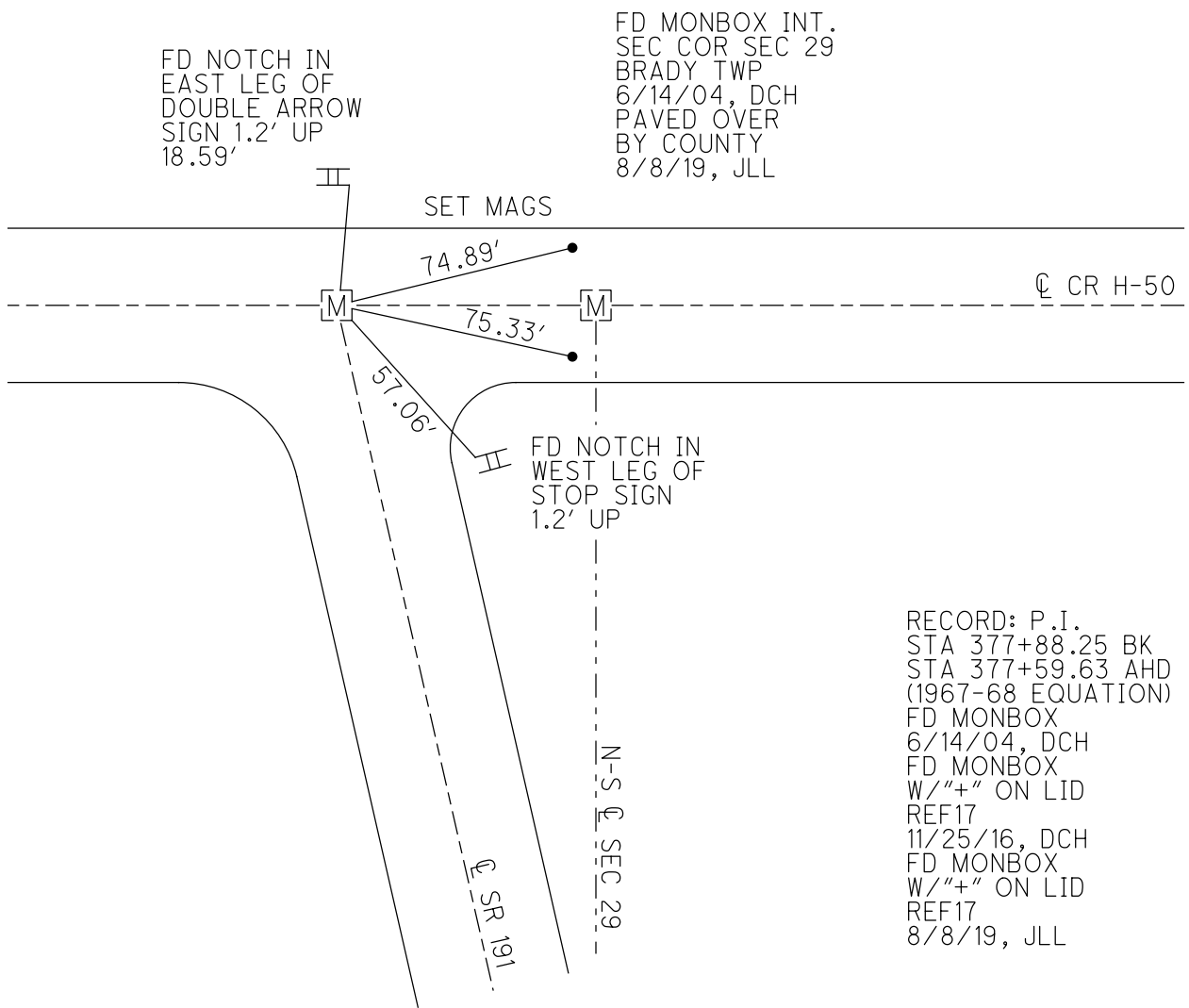
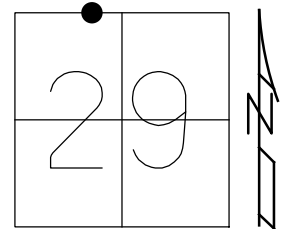
STATION: 376+84.5

HORZ.DATUM: NAD83(2011)

GEOID: 12A

GRID: NORTHING: 686783.742

EASTING: 1440357.093



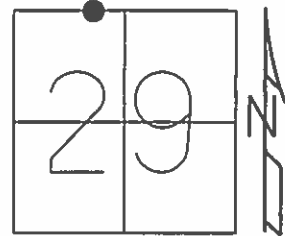
RECORD: P.I.
 STA 377+88.25 BK
 STA 377+59.63 AHD
 (1967-68 EQUATION)
 FD MONBOX
 6/14/04, DCH
 FD MONBOX
 W/"+" ON LID
 REF17
 11/25/16, DCH
 FD MONBOX
 W/"+" ON LID
 REF17
 8/8/19, JLL

O.D.O.T. DISTRICT 2 SURVEY OFFICE (USE ONLY)

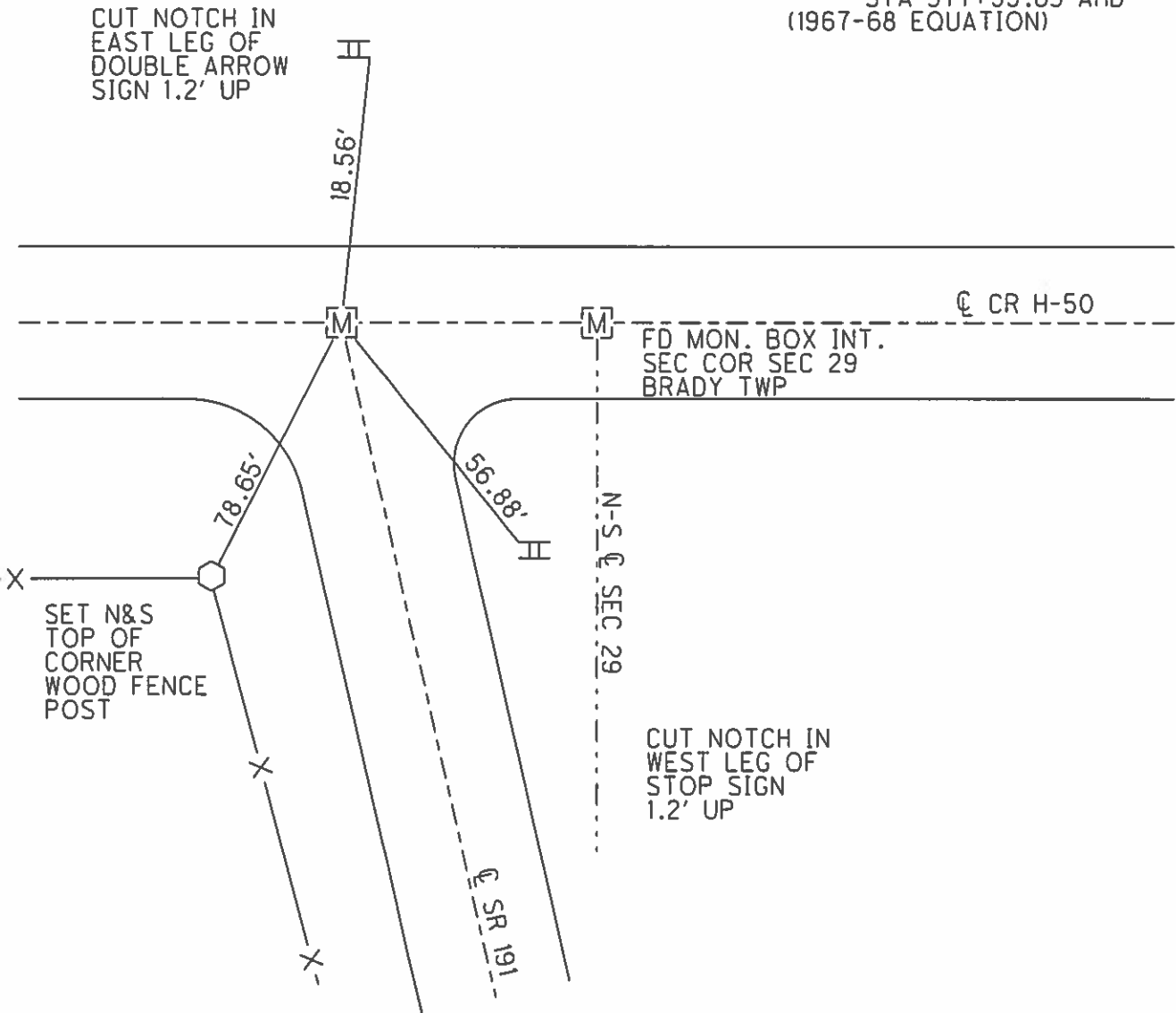
PERSONNEL _____ REFERENCE NO. 17 SHEET 22 OF 34

NOTES _____ DATE 6/14/04 ROUTE SR 191
 H.C. HOMAN WEATHER CLOUDY COUNTY WILLIAMS
 R.C. NUHFER TEMP. 83° TOWNSHIP BRADY
 _____ SECTION 29
 _____ T 7 N R 4 E

TYPE MONUMENT MON.BOX
 ON SURFACE - ~~BELOW~~ ON _____
 LEFT - ~~PAV'T~~ RIGHT 0.5'
9.4' TO RT EDGE PAVEMENT
 S.L.M. 376+85
 GRID: NORTHING: _____ EASTING: _____



P.I. STA 377+88.25 BK =
 STA 377+59.63 AHD
 (1967-68 EQUATION)



O.D.O.T. DISTRICT 2 SURVEY OFFICE

PERSONNEL

REFERENCE NO. 17

SHEET 12 OF 23

NOTES HUSS

DATE 6-14-04

ROUTE SR 191

H.C. HOMAN

WEATHER CLOUDY

COUNTY WILLIAMS

R.C. NUHFER

TEMP. 83°

TOWNSHIP BRADY

SECTION 29

T 7 N R 4 E

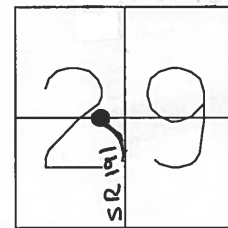
TYPE MONUMENT MONUMENT BOX

ON SURFACE ~~BELOW~~ ON

LEFT ~~PAVT~~ ~~RIGHT~~ 0.5' LT

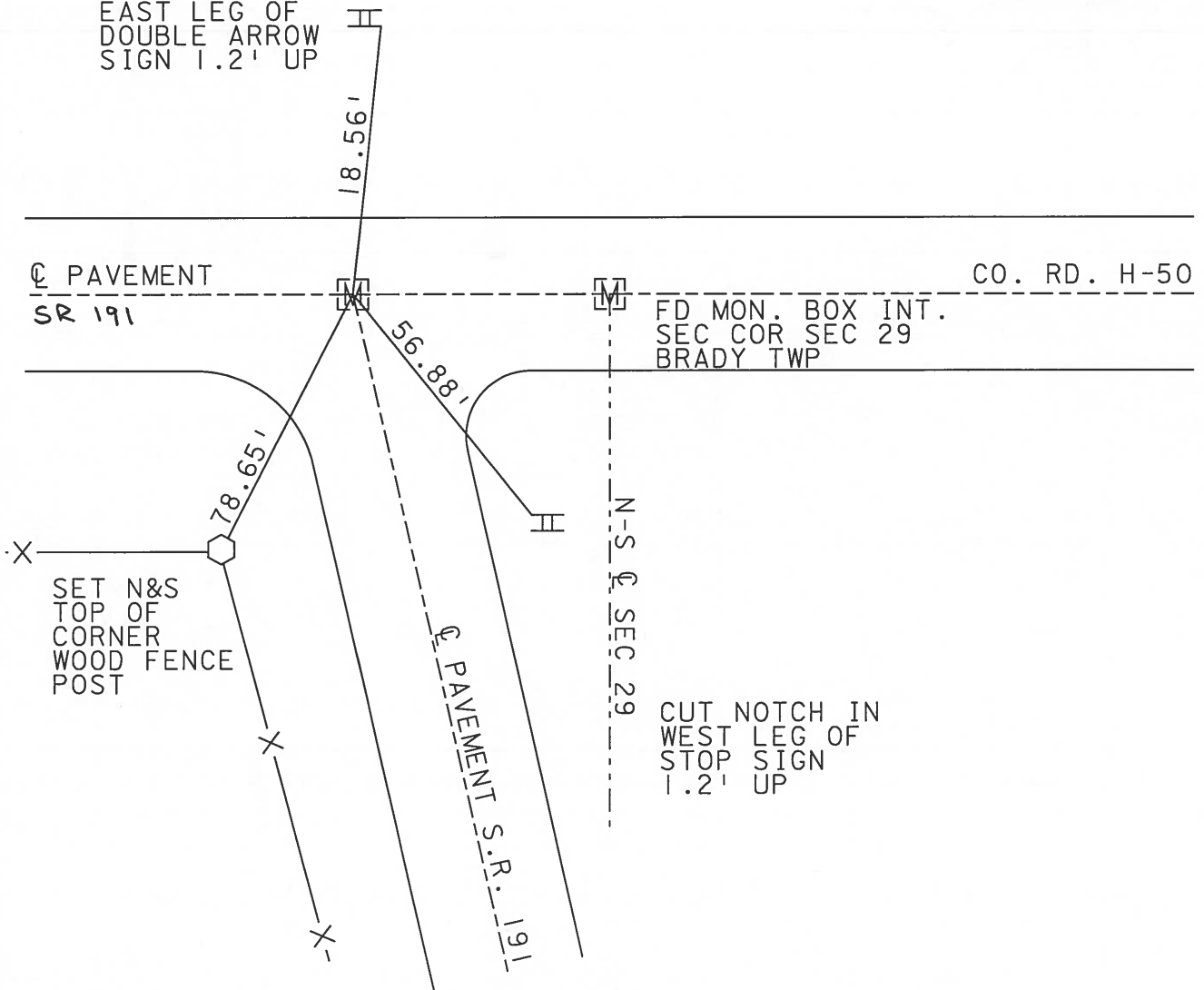
9.4 TO RT EDGE PAVEMENT

S.L.M. 376+85



P.I. STA 377+88.25 BK =
STA 377+59.63 AHD
(1967-68 EQUATION)

CUT NOTCH IN
EAST LEG OF
DOUBLE ARROW
SIGN 1.2' UP



O.D.O.T. DISTRICT 2 SURVEY OFFICE

PERSONNEL _____

REFERENCE NO. 17

SHEET 11 OF 22

NOTES 1 Stone

H.C. D. Curtis

DATE 13 Jan. 87

ROUTE SR #191

R.C. J. Hausholder

WEATHER Cool

COUNTY Williams

TEMP. 32°

TOWNSHIP Brady

SECTION 29

T ___ R ___

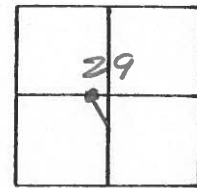
TYPE MONUMENT Mon. Box

ON SURFACE - BELOW 2" deep

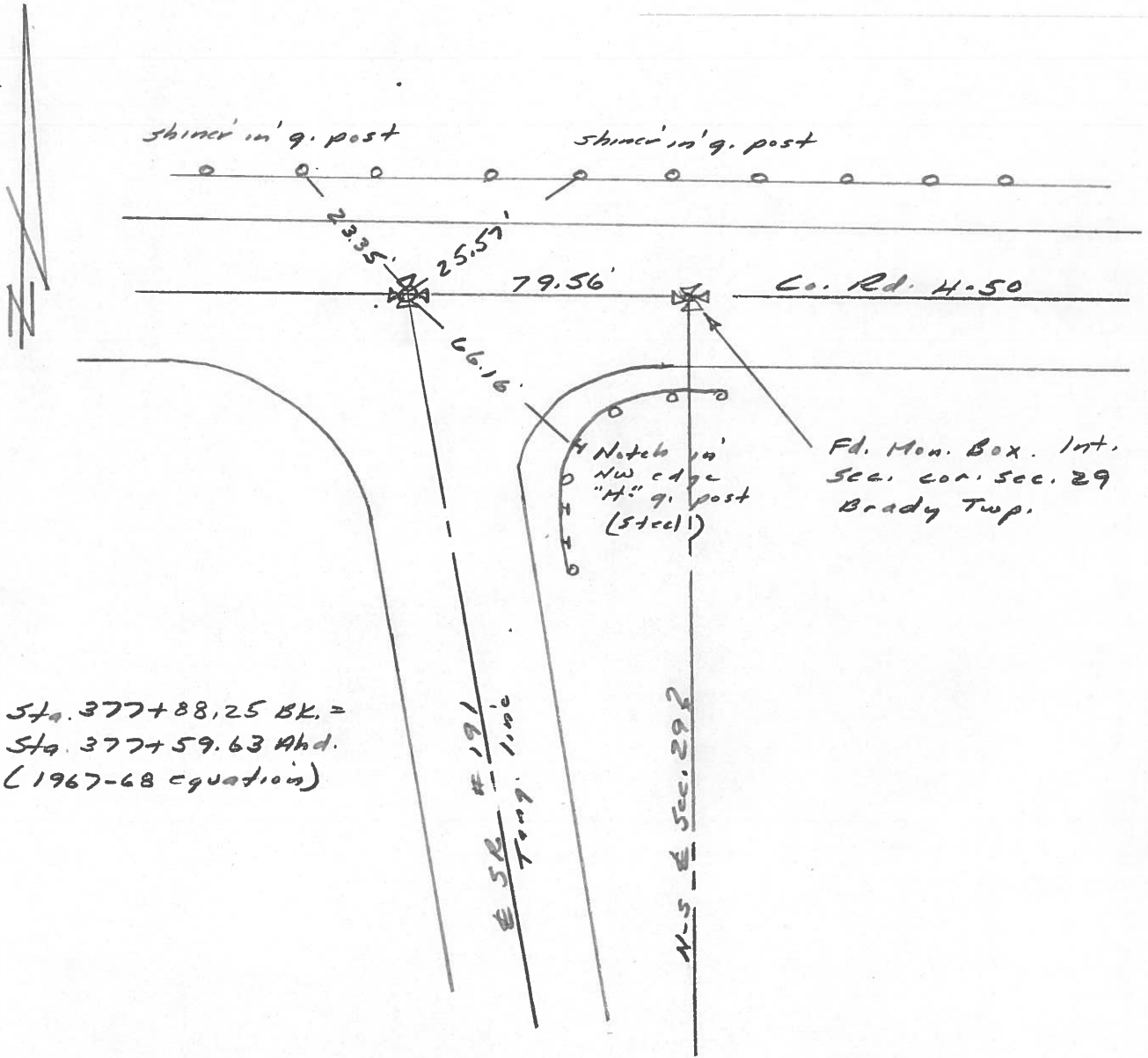
LEFT- & PAV'T. - RIGHT _____

TO _____ EDGE PAVEMENT

S.L.M. 376+85



OK - 9-10-87 DC



P.I. Sta. 377+88.25 BK. =
Sta. 377+59.63 Ahd.
(1967-68 equation)

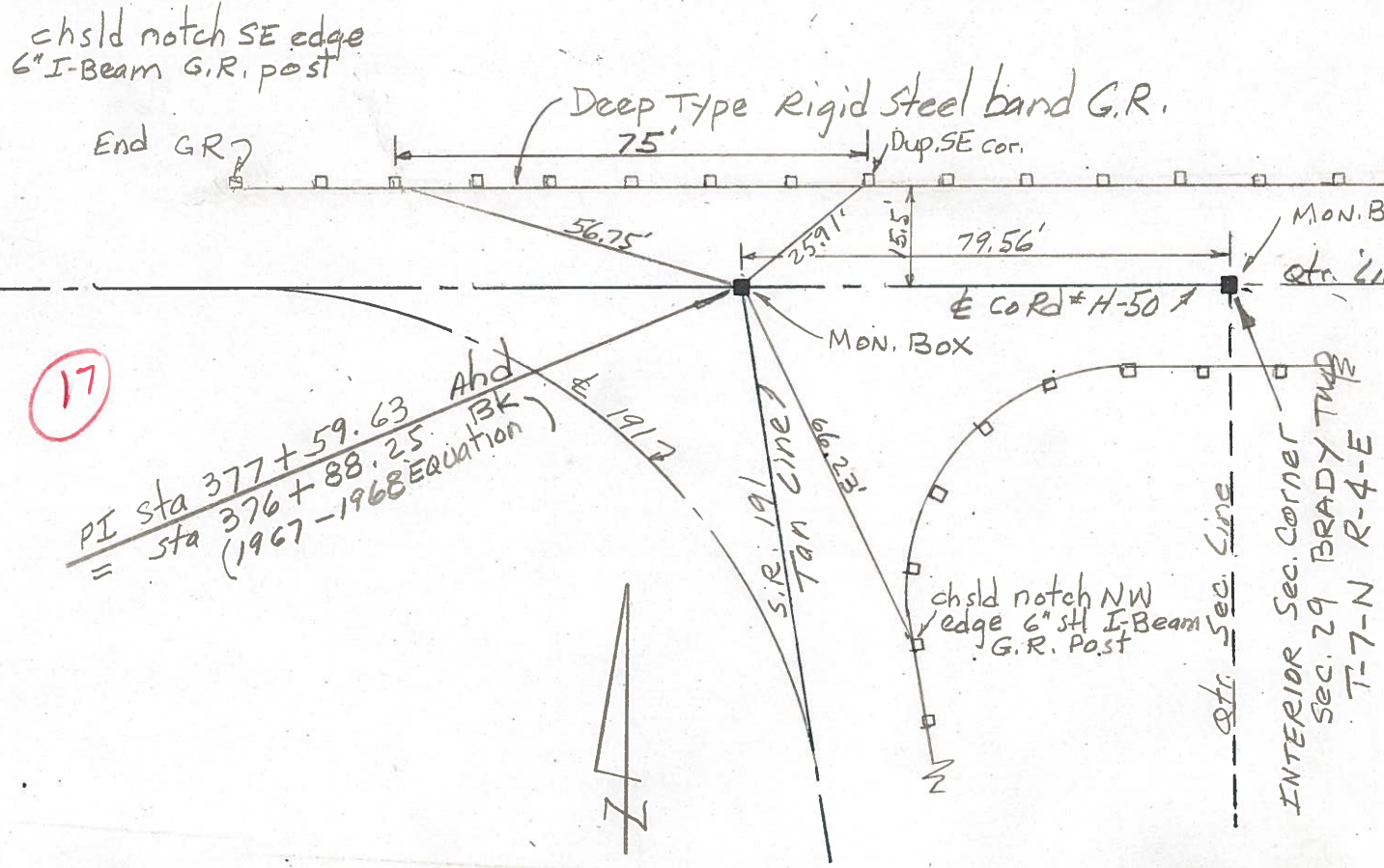
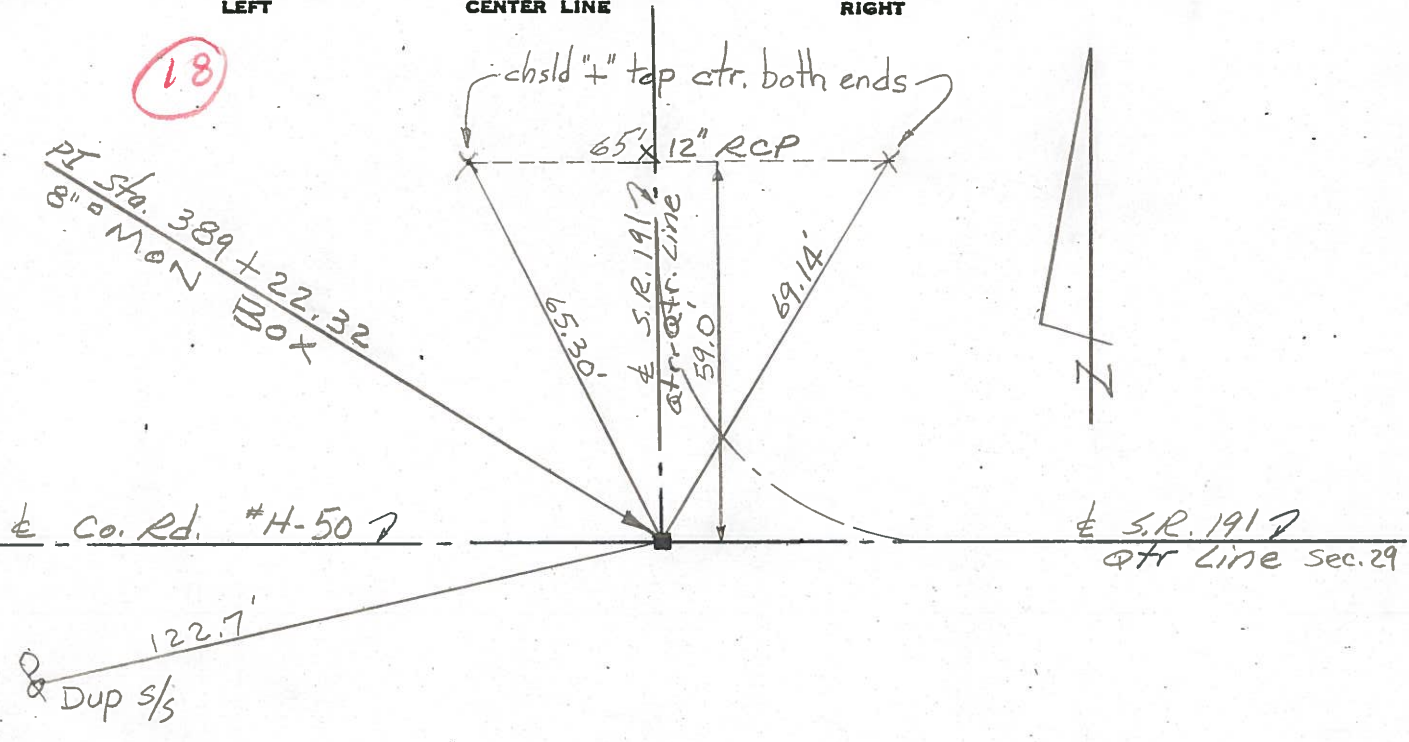
PERSONNEL TITLE PERSONNEL TITLE
 Red Beach
 W. Knappe

COUNTY Williams DATE 8 Mar. 77

S. R. 191 WEATHER

SEC. Stryker-W. Unity TEMP.

DESCRIPTION CONTROL POINTS JOB NO.



PERSONNEL	TITLE	PERSONNEL	TITLE	COUNTY	DATE
<u>Lovys</u>		<u>Newcomb</u>		<u>Wi.</u>	<u>6-15-67</u>
<u>Russell</u>				S. R. <u># 191</u>	WEATHER <u>Fair</u>
<u>Wise</u>				SEC. <u>Rt Co Rd H-50</u>	TEMP. <u>90°</u>
<u>Fiksen</u>					
DESCRIPTION	<u>Witnesses to Control Point's</u>			JOB NO.	
	LEFT	CENTER LINE	RIGHT		

