

O.D.O.T. DISTRICT 2 SURVEY OFFICE (USE ONLY)

PERSONNEL

REFERENCE NO. 23

SHEET 26 OF 34

NOTES RHOADES

DATE 3/21/19

ROUTE SR 191

H.C. O'DONNELL

WEATHER CLOUDY

COUNTY WILLIAMS

R.C. JAMES

TEMP. 44°

TOWNSHIP BRADY

SECTION 17

DWG BY NIESE PID 92373

T 7 N R 4 E

TYPE MONUMENT MAG NAIL

ON SURFACE - ~~BELOW~~ ON

OFFSET 0.4' ± : RT

- TO - EDGE PAVEMENT

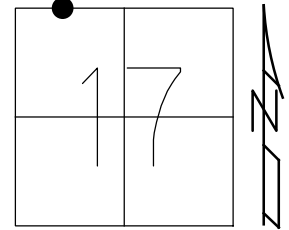
STATION: 521+29.94

HORZ.DATUM: NAD83(2011)

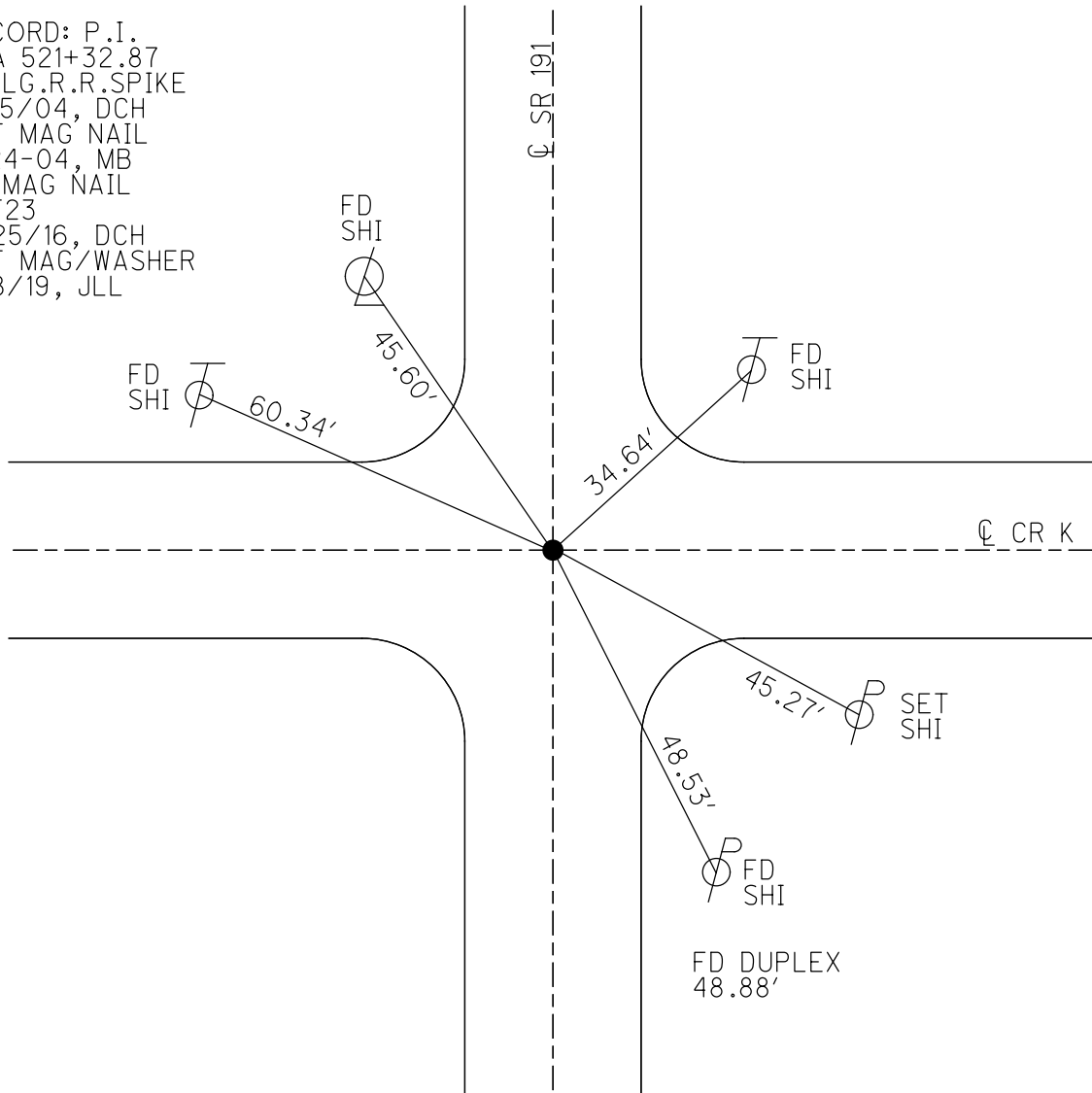
GEOID: 2012A

GRID: NORTHING: 700017.286

EASTING: 1439369.412



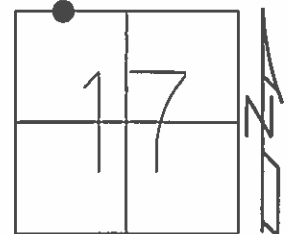
RECORD: P.I.
 STA 521+32.87
 FD LG.R.R.SPIKE
 6/15/04, DCH
 SET MAG NAIL
 8-24-04, MB
 FD MAG NAIL
 REF23
 11/25/16, DCH
 SET MAG/WASHER
 8/8/19, JLL



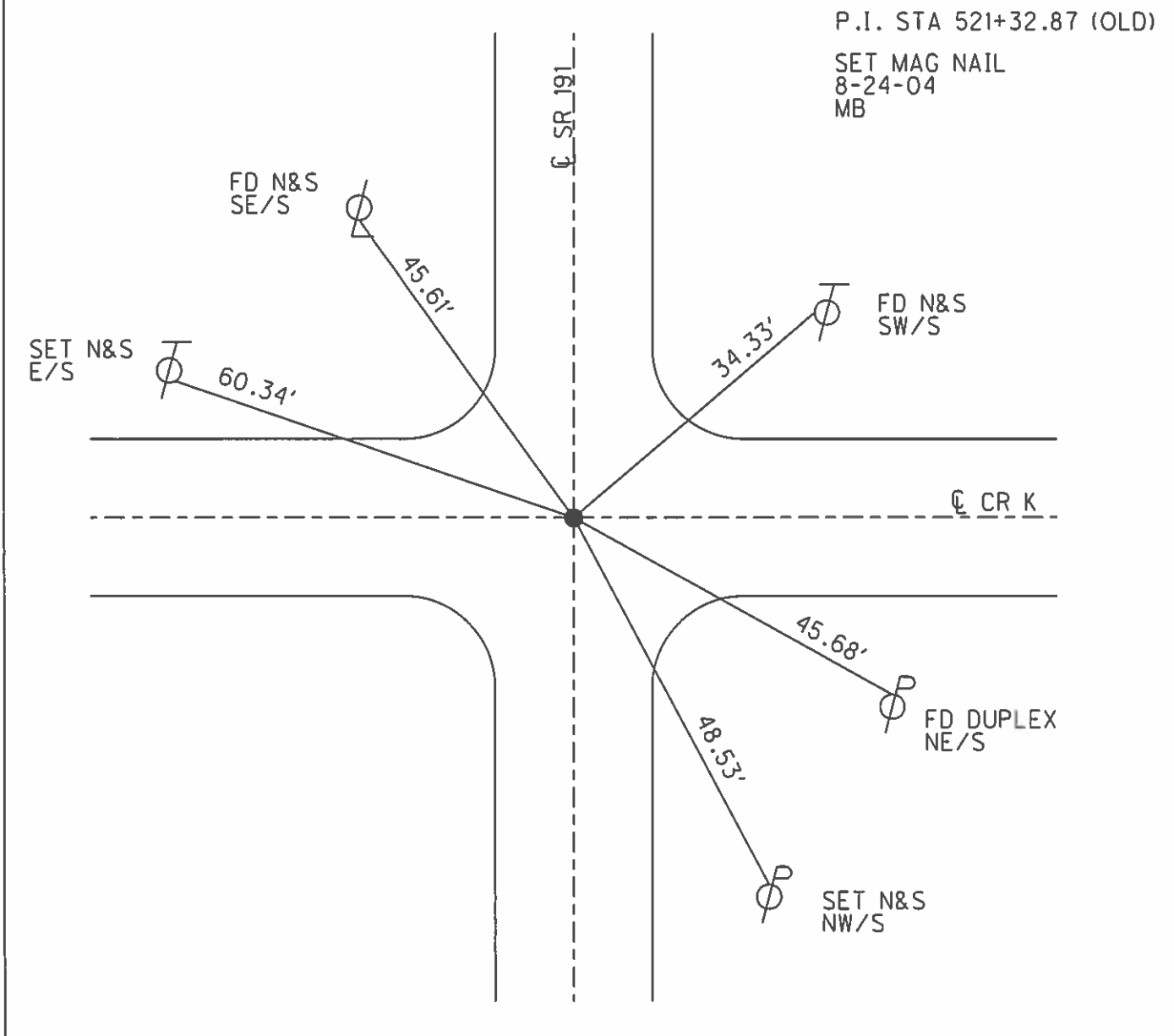
O.D.O.T. DISTRICT 2 SURVEY OFFICE (USE ONLY)

PERSONNEL _____ REFERENCE NO. 23 SHEET 26 OF 34
 NOTES HUSS DATE 6/15/04 ROUTE SR 191
 H.C. HOMAN WEATHER CLEAR COUNTY WILLIAMS
 R.C. NUHFER TEMP. 74° TOWNSHIP BRADY
 _____ SECTION 17
 _____ T 7 N R 4 E

TYPE MONUMENT LG.R.R.SPIKE
 ON SURFACE - ~~BELOW~~ ON _____
~~LEFT - C PAV'T~~ - RIGHT 0.4'
 - TO - EDGE PAVEMENT
 S.L.M. 521+31



GRID: NORTHING: _____ EASTING: _____



O.D.O.T. DISTRICT 2 SURVEY OFFICE

PERSONNEL

REFERENCE NO. 23

SHEET 16 OF 23

NOTES HUSS

DATE 6-15-04

ROUTE SR 191

H.C. HOMAN

WEATHER CLEAR

COUNTY WILLIAMS

R.C. NUHFER

TEMP. 74°

TOWNSHIP BRADY

SECTION 17

T 7 N R 4 E

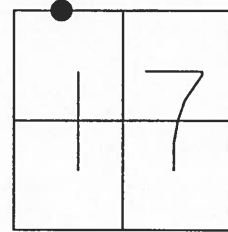
TYPE MONUMENT LG RR SPIKE

ON SURFACE ~~- BELOW~~ ON

~~LEFT - C PAVT~~ - RIGHT 0.4' RT

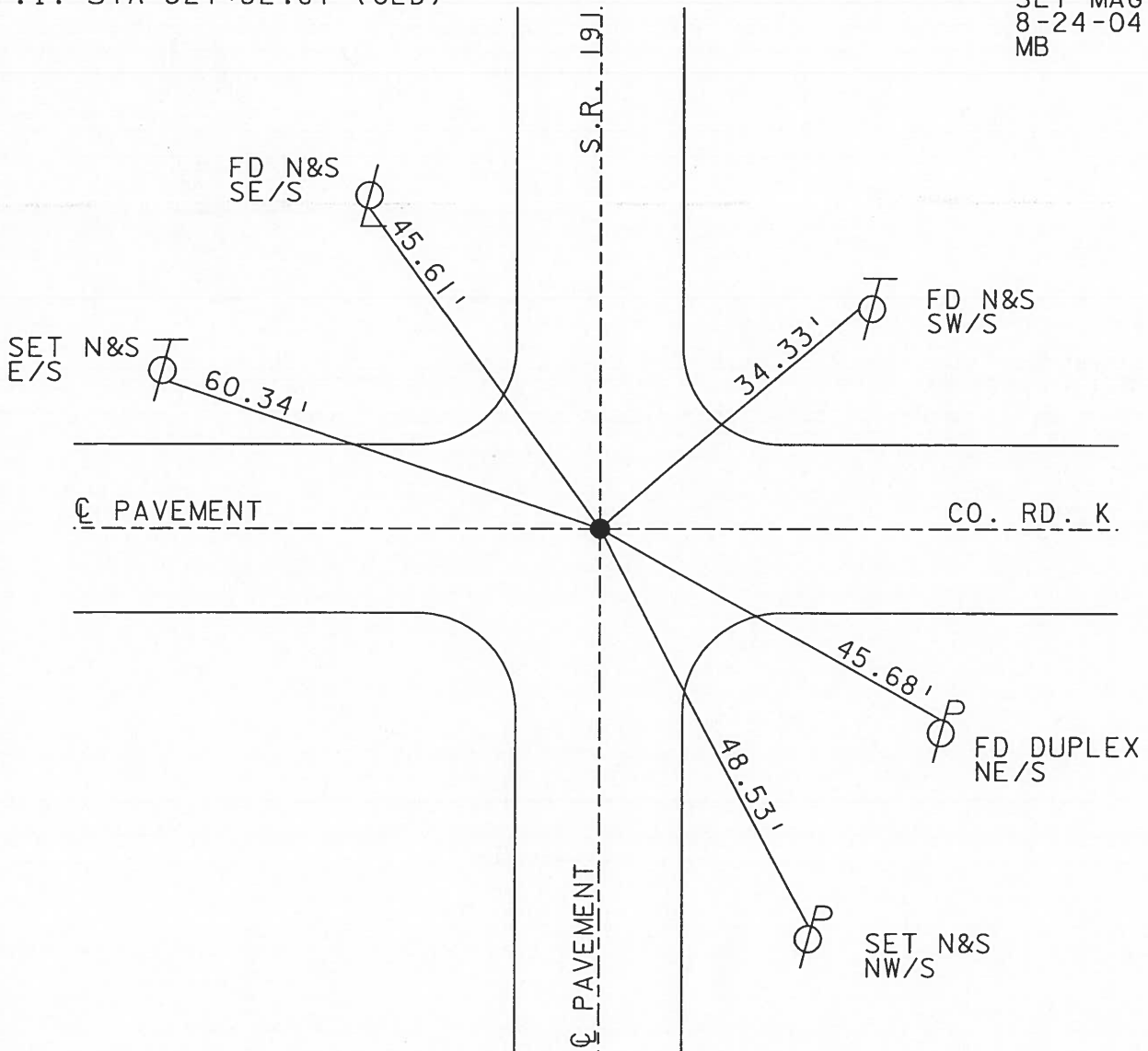
TO EDGE PAVEMENT

S.L.M. 521+31



P. I. STA 521+32.87 (OLD)

SET MAG NAIL
8-24-04
MB



O.D.O.T. DISTRICT 2 SURVEY OFFICE

PERSONNEL _____

REFERENCE NO. 23

SHEET 15 OF 22

NOTES 1. Stone

H.C. D. Curtis

DATE 14 Jan. 87

ROUTE SR#191

R.C. J. Hauscholder

WEATHER Cool

COUNTY Williams

TEMP. 38°

TOWNSHIP Brady

SECTION 17

T. _____ R. _____

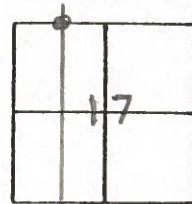
TYPE MONUMENT 3/4" I. pipe

ON SURFACE - BELOW 2" deep

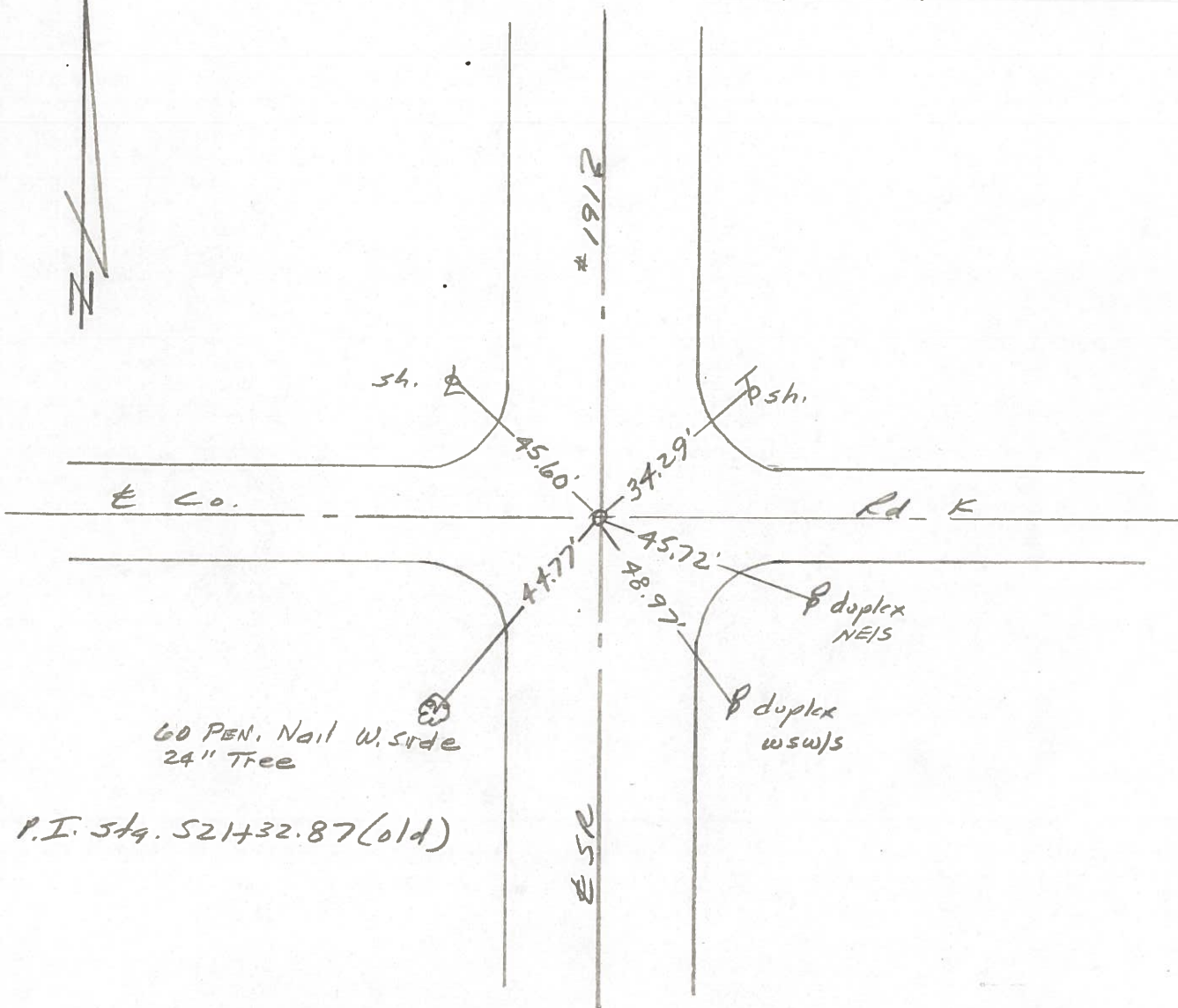
LEFT - & PAV'T. - RIGHT _____

TO _____ EDGE PAVEMENT

S.L.M. 521+31



Set R.R. Spk. To Surface
9-10-87 AC



P.I. Sta. 521+32.87 (old)

PERSONNEL TITLE PERSONNEL TITLE
Red Beach
W. Knappe

COUNTY Williams DATE 11 Mar 77

S. R. 191 W. Unity WEATHER

SEC. BRADY Twp T-7-N TEMP.

