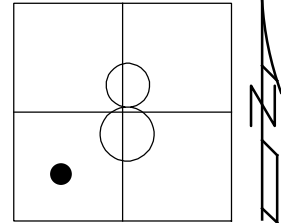


O.D.O.T. DISTRICT 2 SURVEY OFFICE (USE ONLY)

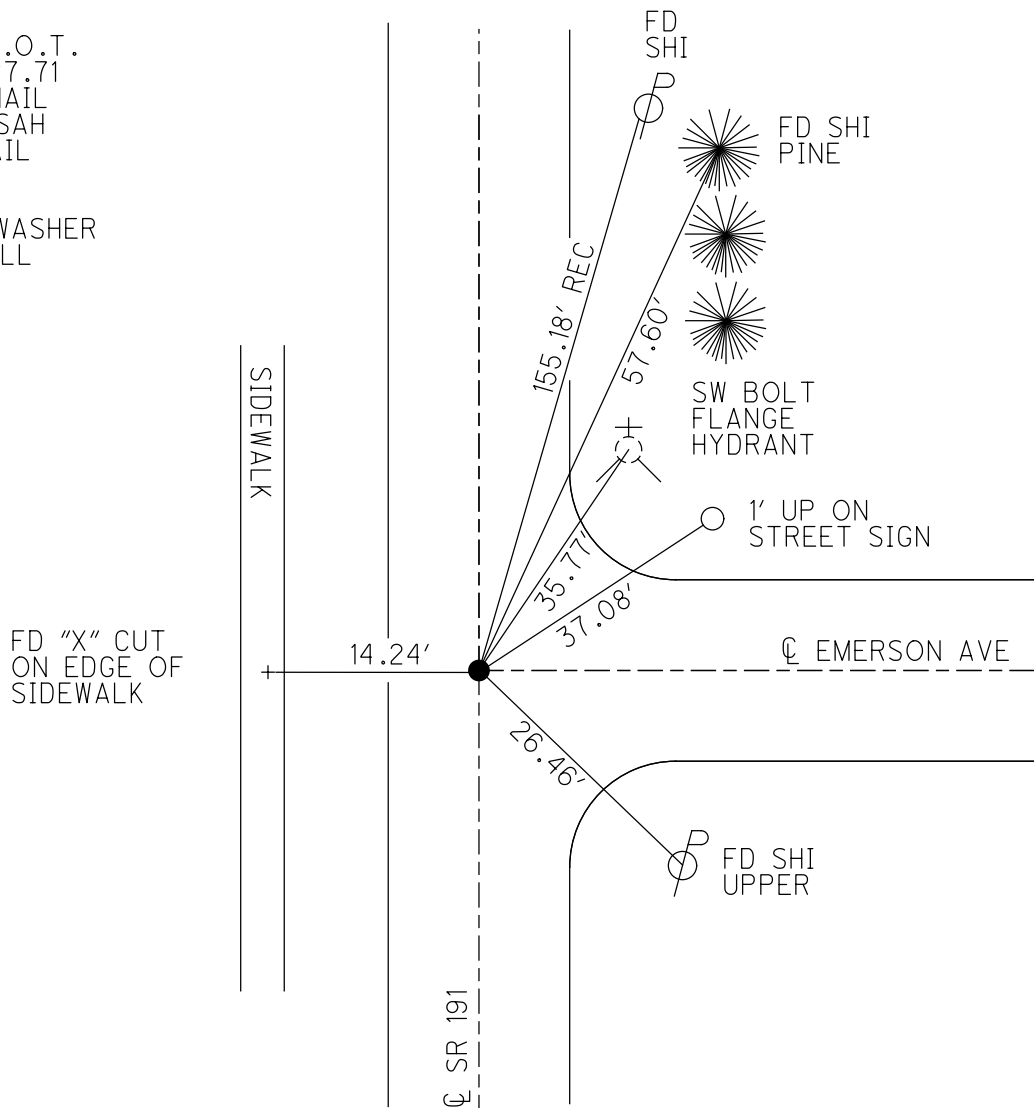
PERSONNEL _____ REFERENCE NO. 23 E SHEET 29 OF 34
 NOTES RHOADES DATE 7/12/18 ROUTE SR 191
 H.C. LEU WEATHER CLEAR COUNTY WILLIAMS
 R.C. HAGEMeyer TEMP. 75° TOWNSHIP BRADY
 DWG BY NASON PID 92373 SECTION 8
 T 7 N R 4 E

TYPE MONUMENT MAG NAIL
 ON SURFACE - ~~BELOW~~ ON _____
 OFFSET C PAVEMENT 1.6' LT : ~~RT~~
9.0' TO LT EDGE PAVEMENT
 STATION: 534+24.41



HORZ.DATUM: NAD83(2011) GEOID: 12A
 GRID: NORTHING: 701311.676 EASTING: 1439376.574

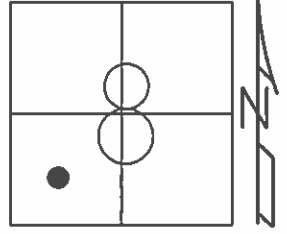
RECORD: P.O.T.
 STA. 537+27.71
 SET MAG NAIL
 7-27-04, SAH
 FD MAG NAIL
 REFE23
 7/12/18
 SET MAG/WASHER
 9/19/19, JLL



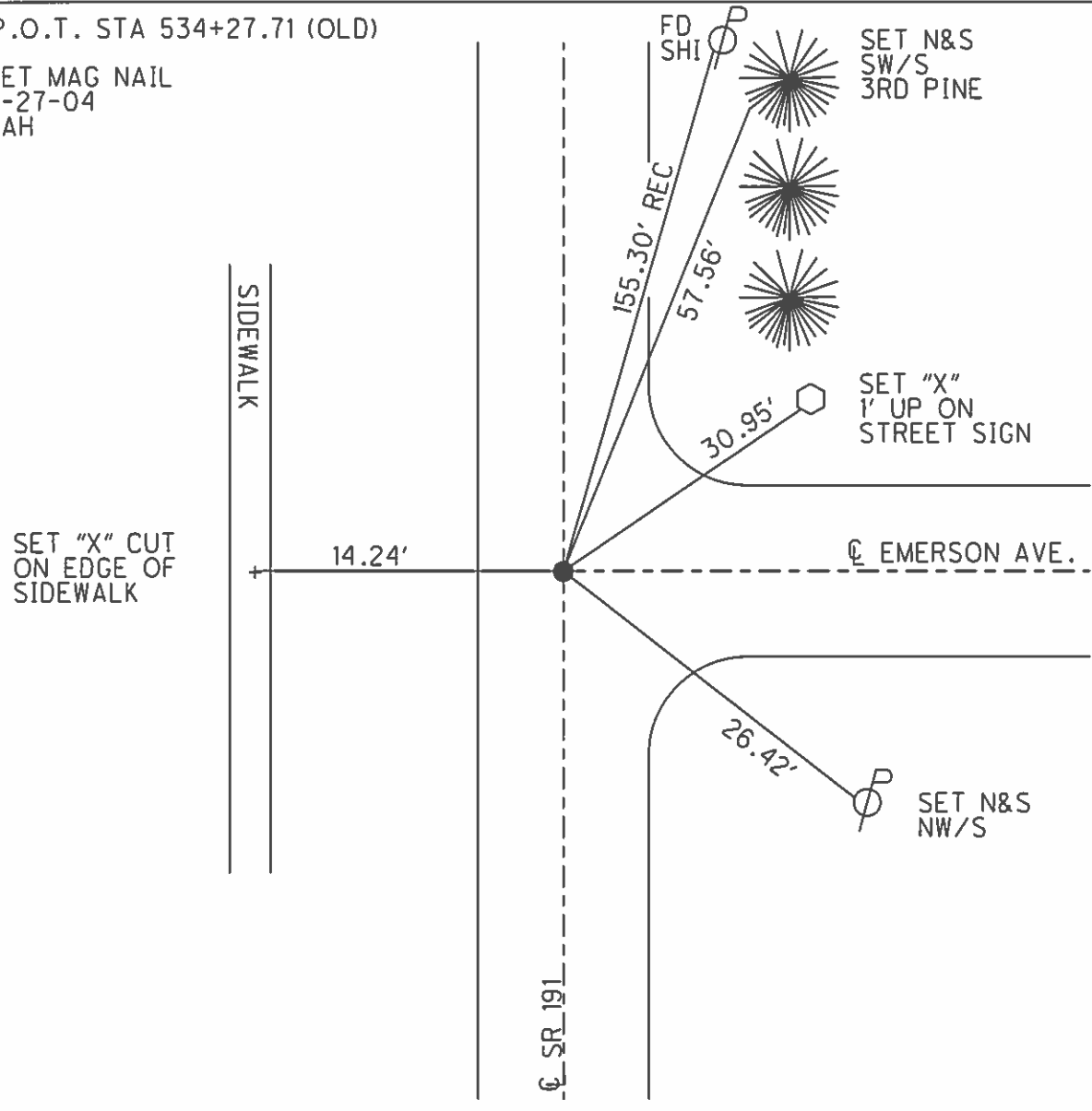
O.D.O.T. DISTRICT 2 SURVEY OFFICE (USE ONLY)

PERSONNEL	REFERENCE NO.	23 E	SHEET	29	OF	34
NOTES	HUSS	DATE	6/15/04	ROUTE	SR 191	
H.C.	HOMAN	WEATHER	CLEAR	COUNTY	WILLIAMS	
R.C.	NUHFER	TEMP.	78°	TOWNSHIP	BRADY	
				SECTION	8	
					T 7 N R 4 E	

TYPE MONUMENT SM.R.R.SPIKE
 ON SURFACE - ~~BELOW~~ ON _____
 LEFT - ~~C PAV'T - RIGHT~~ 0.3'
9.0' TO LT EDGE PAVEMENT
 S.L.M. 534+25
 GRID: NORTHING: _____ EASTING: _____



P.O.T. STA 534+27.71 (OLD)
 SET MAG NAIL
 7-27-04
 SAH



O.D.O.T. DISTRICT 2 SURVEY OFFICE

PERSONNEL

REFERENCE NO. 23-E

SHEET 19 OF 23

NOTES HUSS

DATE 6-15-04

ROUTE SR 191

H.C. HOMAN

WEATHER CLEAR

COUNTY WILLIAMS

R.C. NUHFER

TEMP. 78°

TOWNSHIP BRADY

SECTION 8

T 7 N R 4 E

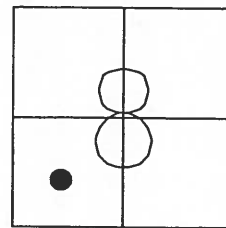
TYPE MONUMENT SM RR SPIKE

ON SURFACE ~~BELOW~~ ON

LEFT ~~C PAVT~~ ~~RIGHT~~ 0.3' LT

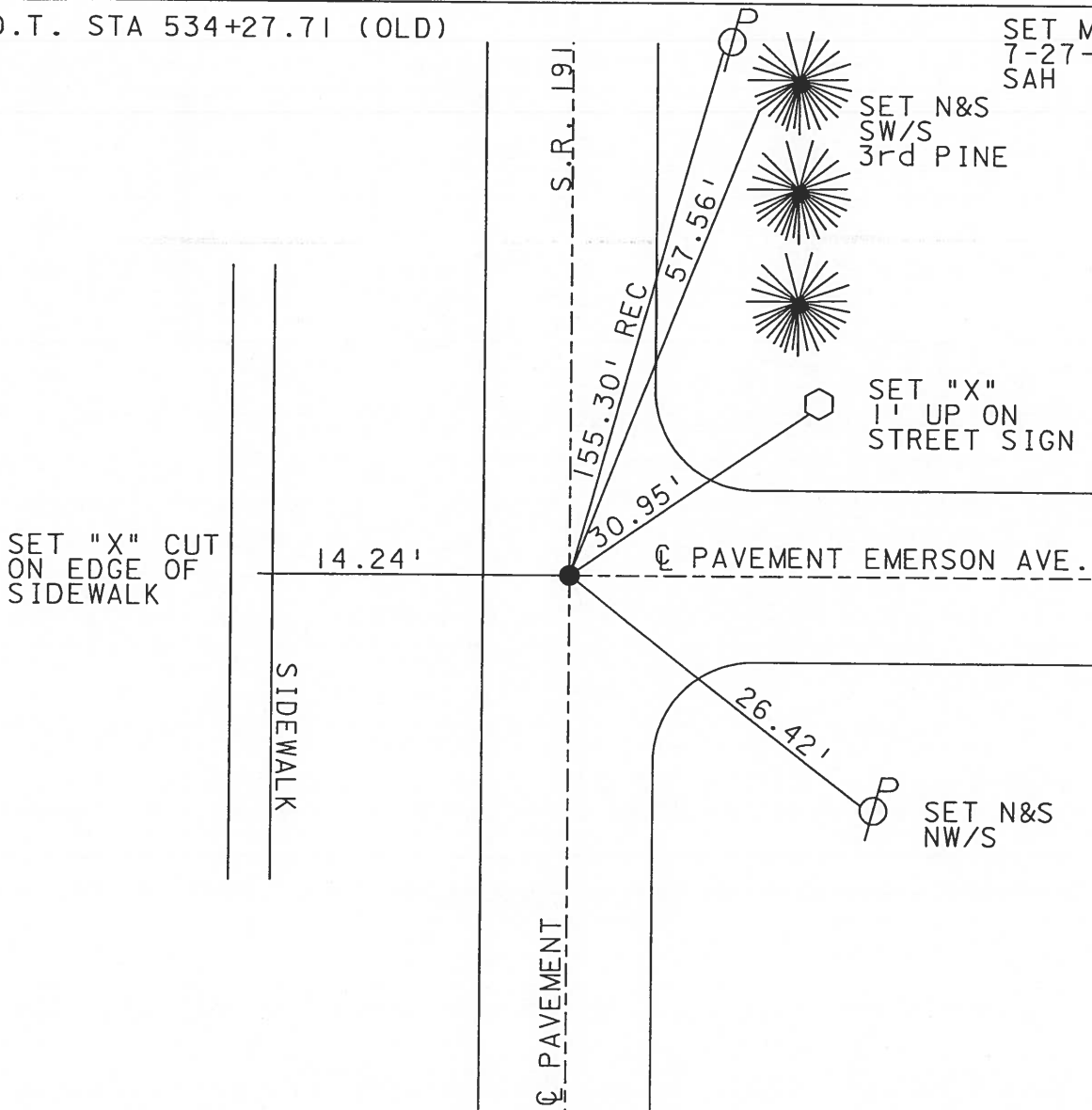
9.0 TO LT EDGE PAVEMENT

S.L.M. 534+25



P.O.T. STA 534+27.71 (OLD)

SET MAG NAIL
7-27-04
SAH



O.D.O.T. DISTRICT 2 SURVEY OFFICE

PERSONNEL

REFERENCE NO. 23-E

SHEET 18 OF 22

NOTES L. Stone

H.C. D. Curtis

R.C. J. Hooschelder

DATE 14 Jan. 87

WEATHER Cool

TEMP. 39°

ROUTE 5E #191

COUNTY Williams

TOWNSHIP Brady

SECTION 8

T. R.

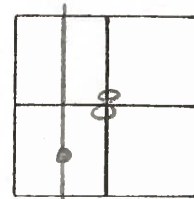
TYPE MONUMENT R.R. Spk.

ON SURFACE - BELOW 2" deep

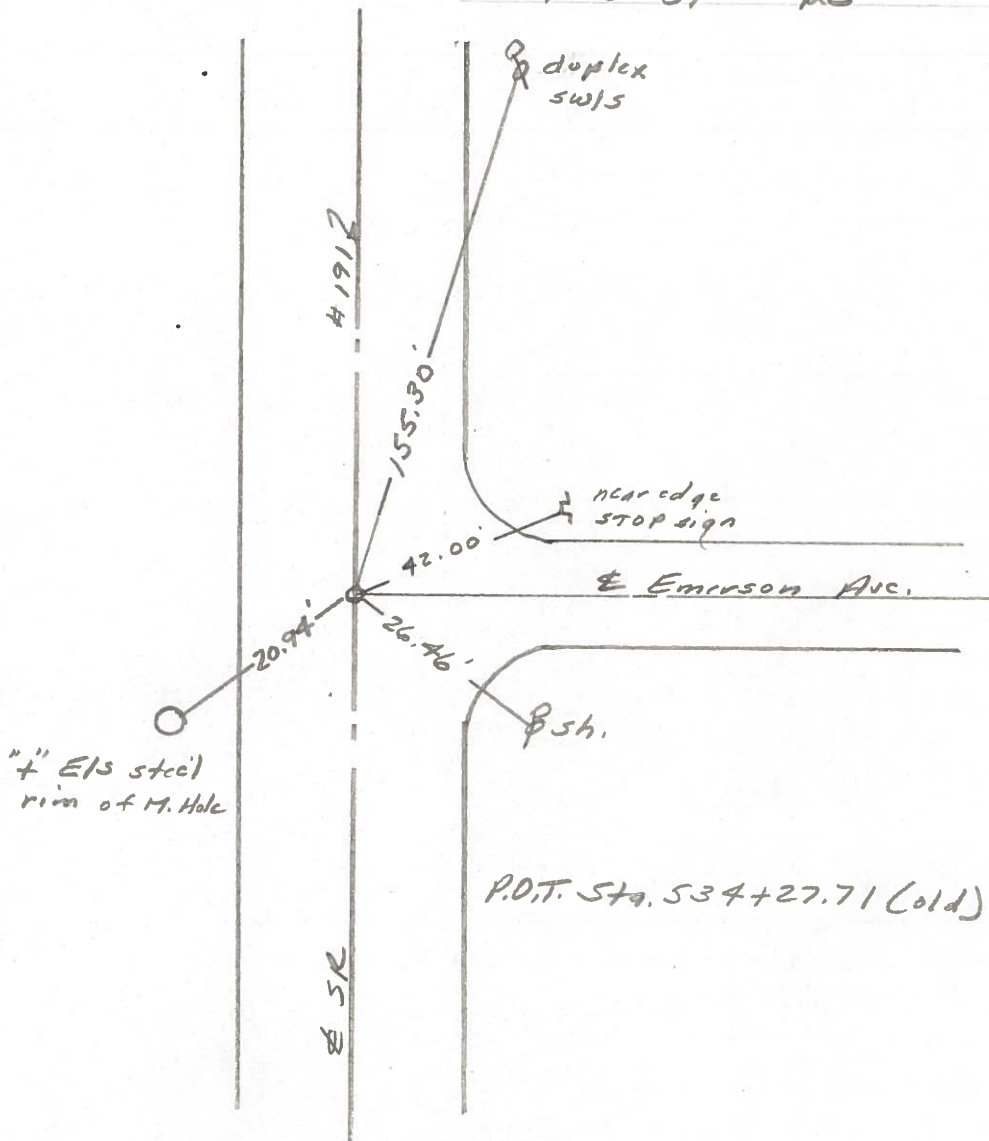
LEFT - PAV'T. - RIGHT

TO EDGE PAVEMENT

S.L.M. 534+26



Set Small R.R. Spk. To Surface
9-10-87 AC



PERSONNEL TITLE PERSONNEL TITLE

Red Beach

W. Krape

COUNTY Williams

DATE 9 March '77

S. R. 191

WEATHER

SEC. West Unity

TEMP

DESCRIPTION

CONTROL POINTS

JOB NO.

LEFT

CENTER LINE

RIGHT

