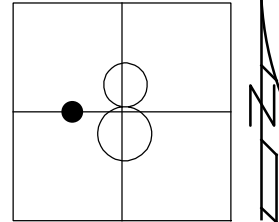


O.D.O.T. DISTRICT 2 SURVEY OFFICE (USE ONLY)

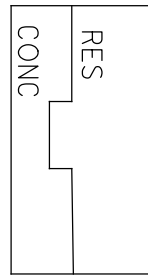
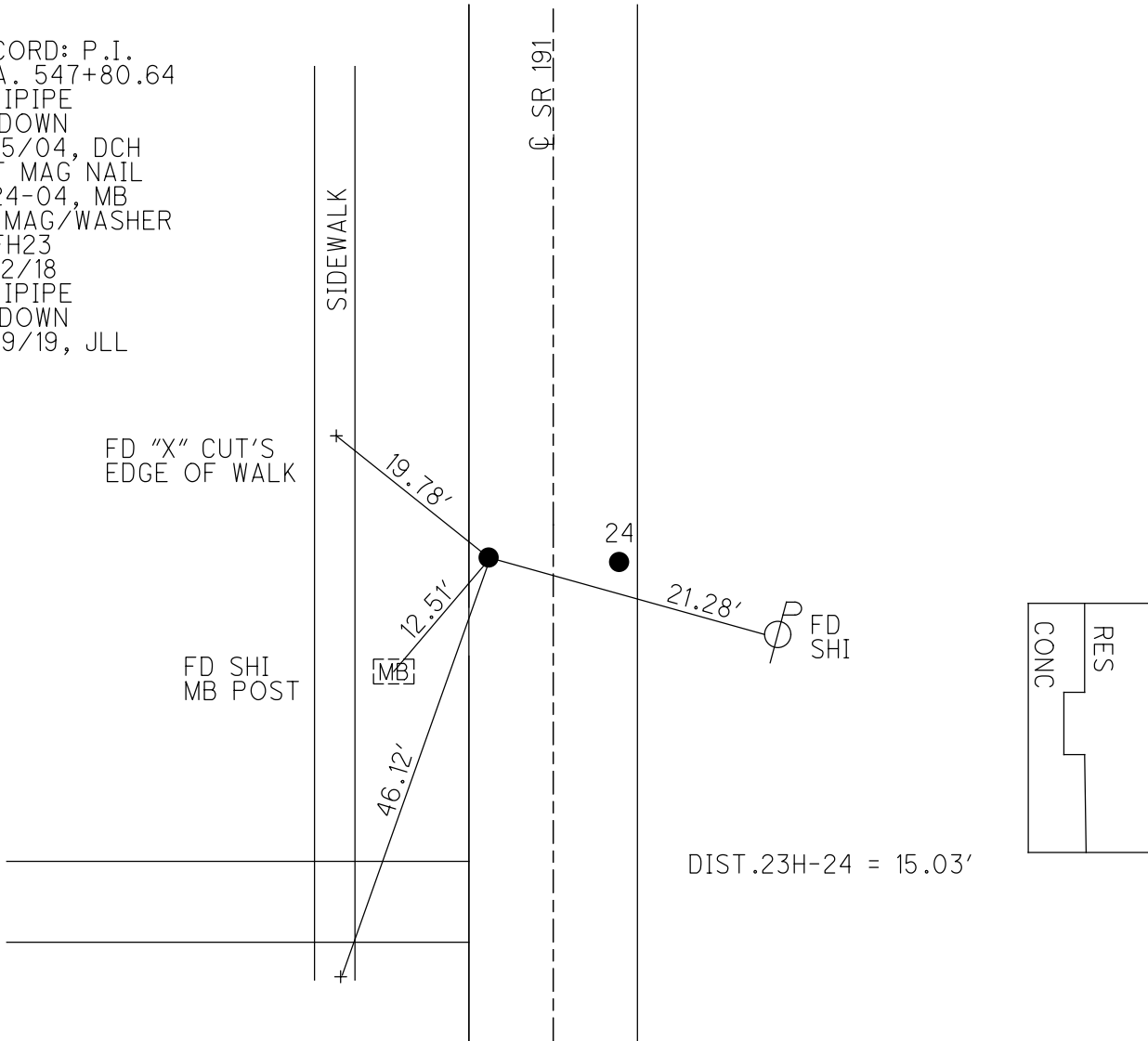
PERSONNEL _____ REFERENCE NO. 23 H SHEET 32 OF 34
 NOTES RHOADES DATE 7/12/18 ROUTE SR 191
 H.C. LEU WEATHER CLEAR COUNTY WILLIAMS
 R.C. HAGEMeyer TEMP. 75° TOWNSHIP BRADY
 DWG BY NASON PID 102827 SECTION 8
 T 7 N R 4 E

TYPE MONUMENT MAG/WASHER
 ON SURFACE - ~~BELOW~~ ON _____
 OFFSET \odot PAVEMENT 7.1' LT : ~~RT~~
1.7' TO LT EDGE PAVEMENT
 STATION: 547+77.46



HORZ. DATUM: NAD83(2011) GEOID: 2012A
 GRID: NORTHING: 702664.620 EASTING: 1439384.214

RECORD: P.I.
 STA. 547+80.64
 FD IPIPE
 2" DOWN
 6/15/04, DCH
 SET MAG NAIL
 8-24-04, MB
 FD MAG/WASHER
 REFH23
 7/12/18
 FD IPIPE
 3" DOWN
 9/19/19, JLL



O.D.O.T. DISTRICT 2 SURVEY OFFICE (USE ONLY)

PERSONNEL _____ REFERENCE NO. 23 H SHEET 32 OF 34

NOTES HUSS DATE 6/15/04 ROUTE SR 191

H.C. HOMAN WEATHER CLEAR COUNTY WILLIAMS

R.C. NUHFER TEMP. 80° TOWNSHIP BRADY

SECTION 8

T 7 N R 4 E

TYPE MONUMENT IPIPE

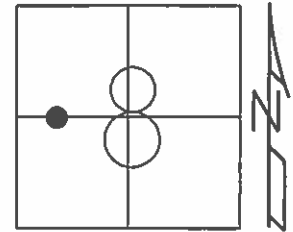
ON SURFACE - ~~BELOW~~ 2"

LEFT - ☉ PAV'T - ~~RIGHT~~ 7.1'

1.7' TOLT EDGE PAVEMENT

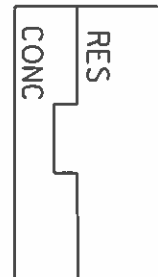
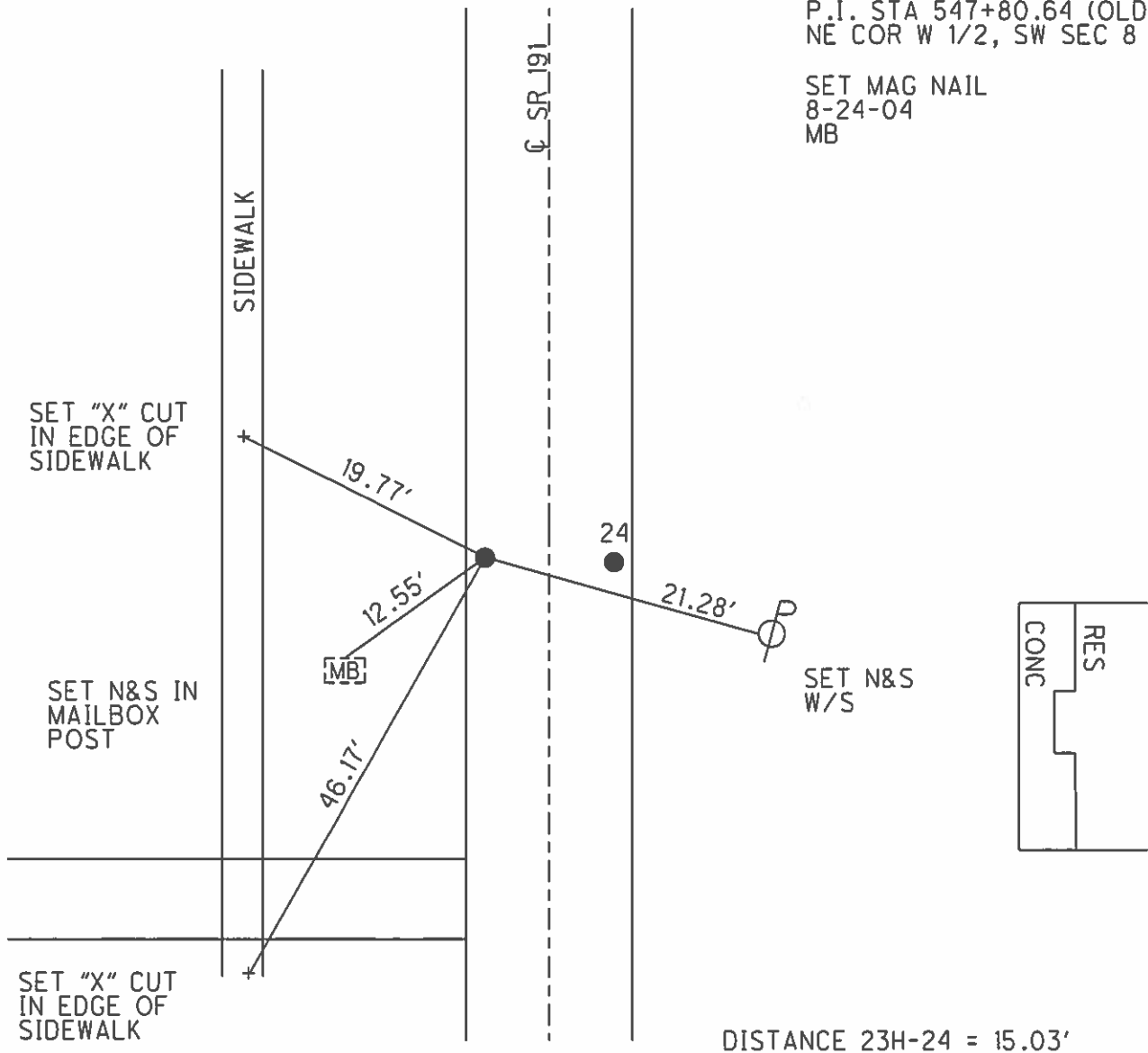
S.L.M. 547+80

GRID: NORTHING: - EASTING: -



P.I. STA 547+80.64 (OLD)
NE COR W 1/2, SW SEC 8

SET MAG NAIL
8-24-04
MB



DISTANCE 23H-24 = 15.03'

O.D.O.T. DISTRICT 2 SURVEY OFFICE

PERSONNEL	REFERENCE NO. <u>24</u>	SHEET <u>22</u> OF <u>23</u>
NOTES <u>HUSS</u>	DATE <u>6-15-04</u>	ROUTE <u>SR 191</u>
H.C. <u>HOMAN</u>	WEATHER <u>CLEAR</u>	COUNTY <u>WILLIAMS</u>
R.C. <u>NUHFER</u>	TEMP. <u>80°</u>	TOWNSHIP <u>BRADY</u>
		SECTION <u>8</u>
		T <u>7</u> N R <u>4</u> E

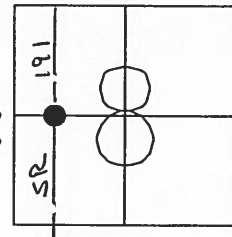
TYPE MONUMENT A IRON PIPE
B SM RR SPIKE

ON SURFACE - BELOW A-2" BELOW; B-ON

LEFT - ϕ PAV'T - RIGHT A-7.1' LT; B-7.9' RT

TO EDGE PAVEMENT A-1.7' TO LT EP
B-1.3' TO RT EP

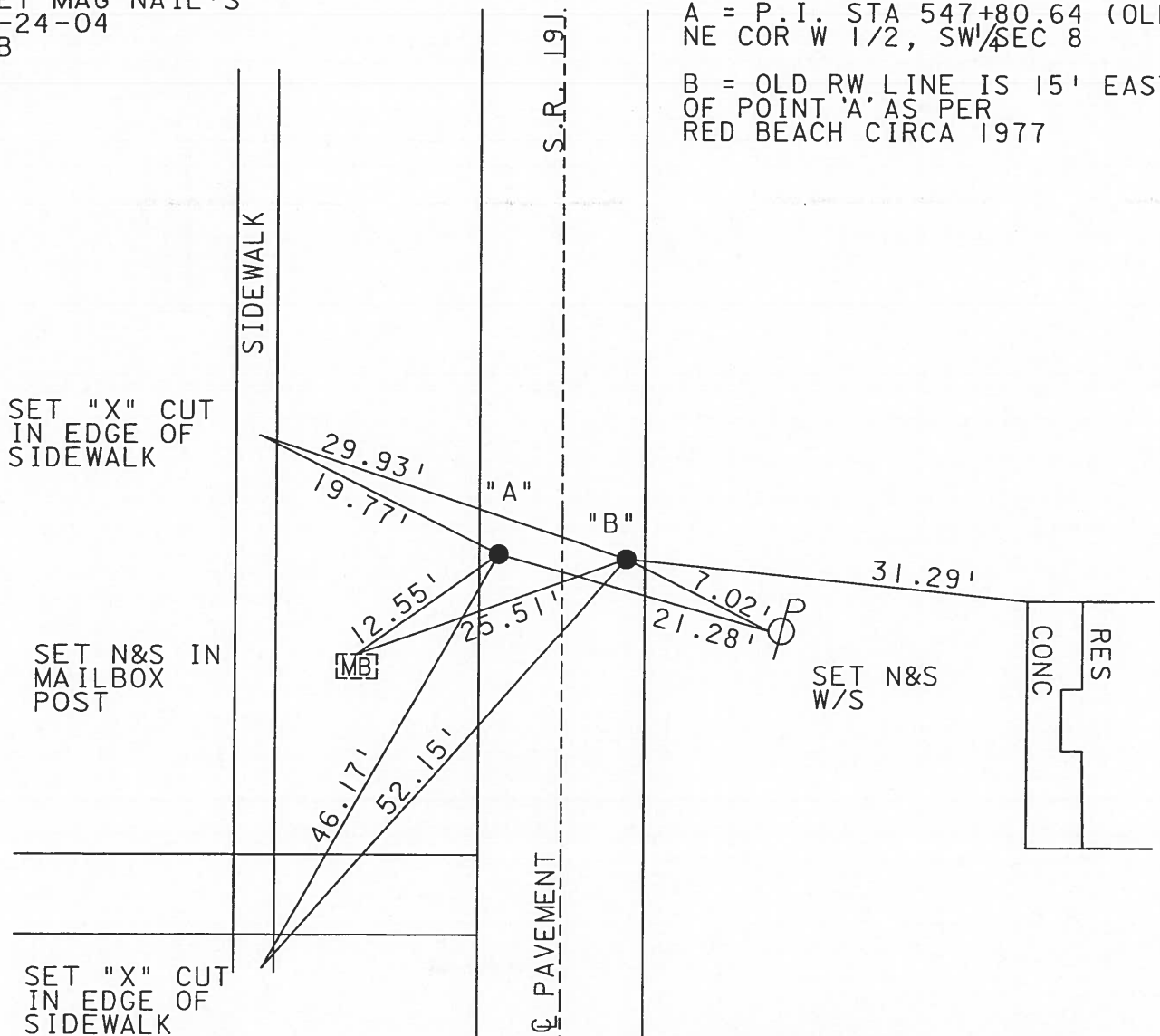
S.L.M. 547+80



SET MAG NAIL'S
 8-24-04
 MB

A = P.I. STA 547+80.64 (OLD)
 NE COR W 1/2, SW 1/4 SEC 8

B = OLD RW LINE IS 15' EAST
 OF POINT 'A' AS PER
 RED BEACH CIRCA 1977



DISTANCE A-B = 15.03'

O.D.O.T. DISTRICT 2 SURVEY OFFICE

PERSONNEL _____

REFERENCE NO. 24

SHEET 21 OF 22

NOTES 1. Stone

H.C. D. Curtis

DATE 14 Jan. 87

ROUTE SR#191

R.C. J. Houscholder

WEATHER Cool

COUNTY Williams

TEMP. 39°

TOWNSHIP Brady

SECTION 8

T ___ R ___

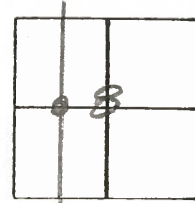
TYPE MONUMENT A = 2 3/4" I pipes
B = 5 3/4" I pipes

ON SURFACE - BELOW A = 2" deep
B = 3" deep

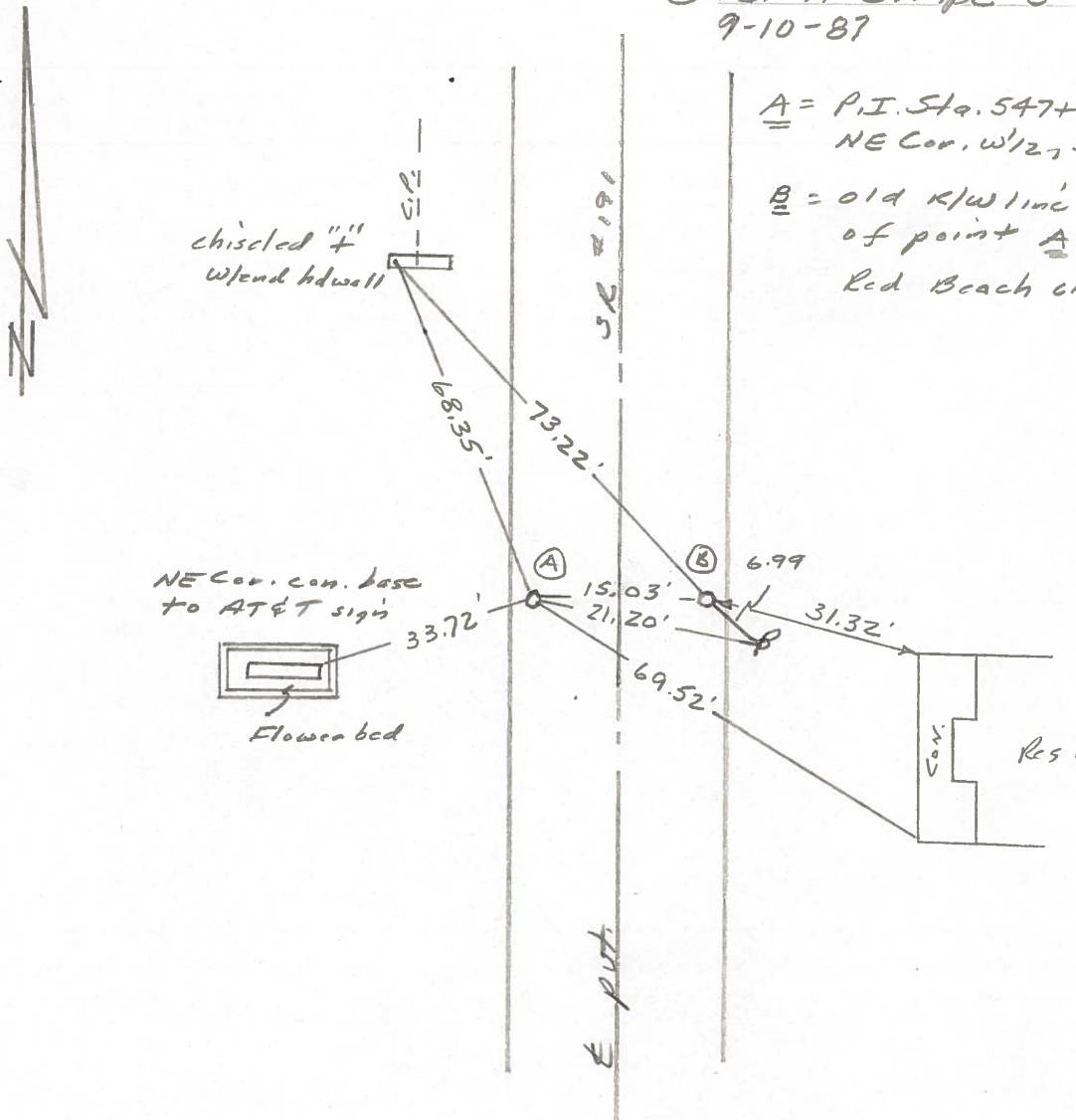
LEFT - ☉ PAV'T. - RIGHT _____

TO _____ EDGE PAVEMENT

S.L.M. 547+79



- ⓑ Set Small R.R. Spk. To Surface
 - ⓐ 1/2" 3/4" I. Pipe 3" Deep
- 9-10-87



A = P.I. Sta. 547+80.64 (old)
NE Cor. w/ 1/2, SW 1/4 Sec. 8

B = old R/W line 15' East of point A as per Red Beach circa 1977

PERSONNEL TITLE PERSONNEL TITLE

Red Beach
W. Knape

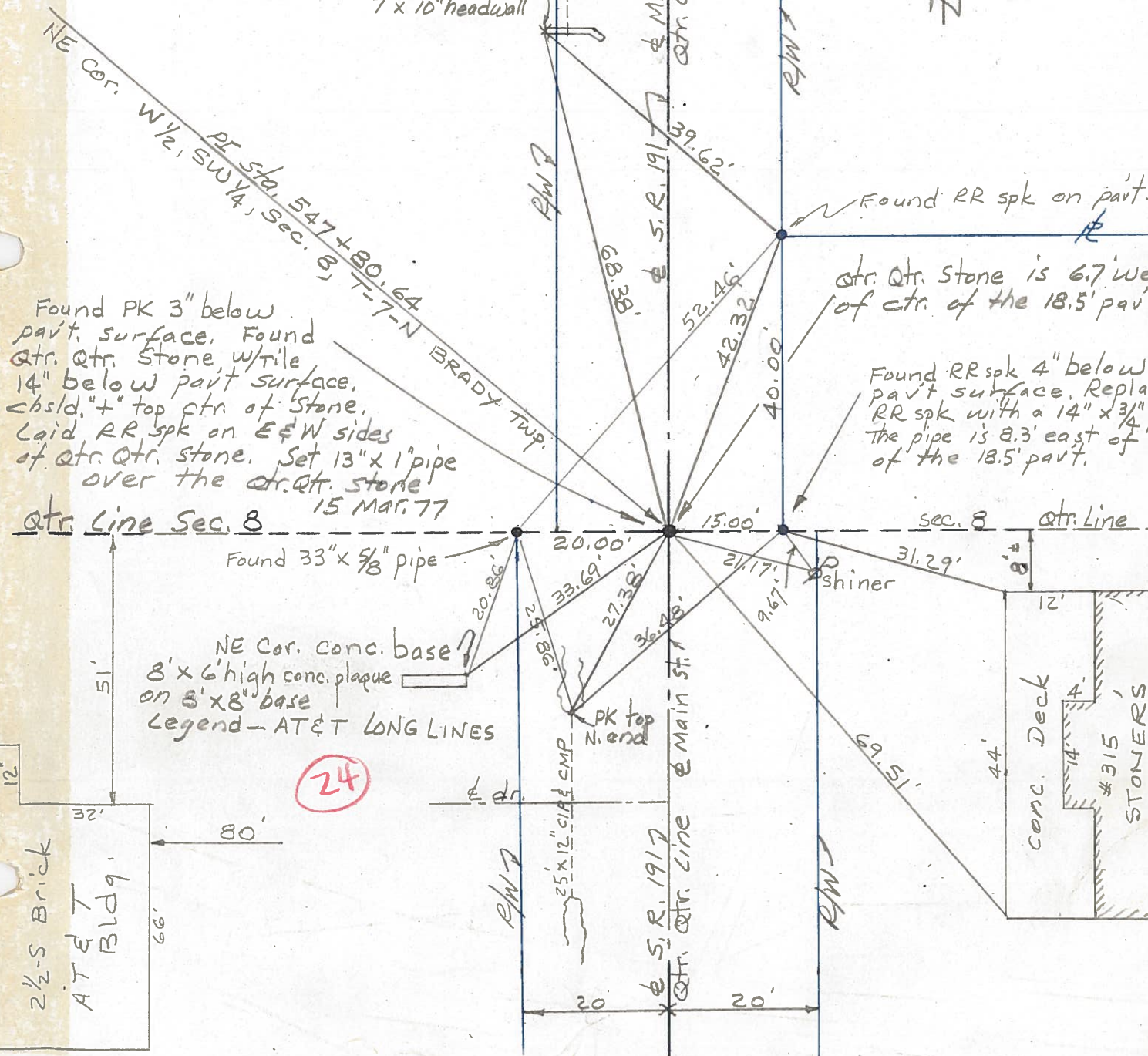
COUNTY Williams DATE 15/16 Mar. '77

S. R. 191 BRADY TWP. WEATHER

SEC. West Unity Sec. 8 TEMP.

DESCRIPTION CONTROL POINTS LEFT CENTER LINE RIGHT JOB NO.

AT&T blacktop parking



24