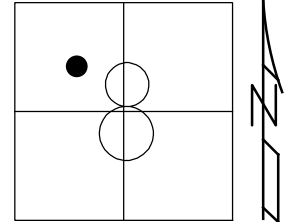


O.D.O.T. DISTRICT 2 SURVEY OFFICE (USE ONLY)

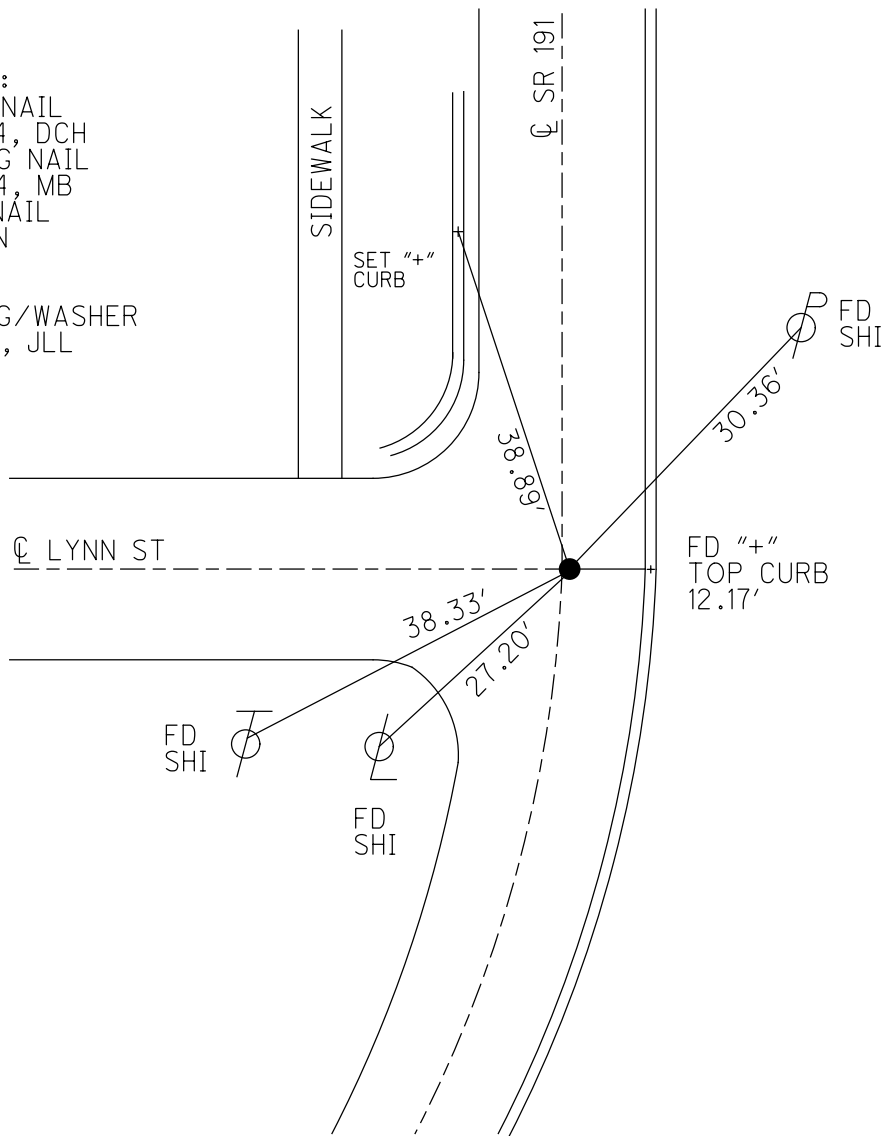
PERSONNEL _____ REFERENCE NO. 24 A SHEET 34 OF 34
 NOTES AUBLE DATE 9/19/19 ROUTE SR 191
 H.C. LEU WEATHER CLEAR COUNTY WILLIAMS
 R.C. NASON TEMP. 57° TOWNSHIP BRADY
 DWG BY NASON PID 102827 SECTION 8
 T 7 N R 4 E

TYPE MONUMENT MAG/WASHER
 ON SURFACE - ~~BELOW~~ ON
 OFFSET Q PAVEMENT ON LT : RT
12' TO RT EDGE PAVEMENT
 STATION: 566+49.46



HORZ. DATUM: NAD83(2011) GEOID: 2012A
 GRID: NORTHING: 704459.891 EASTING: 1439471.646

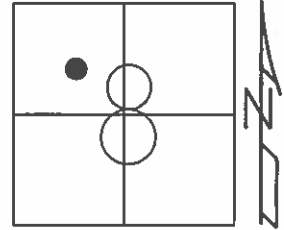
RECORD:
 FD P.K.NAIL
 6/15/04, DCH
 SET MAG NAIL
 8-24-04, MB
 FD PK NAIL
 5" DOWN
 REFA24
 7/12/18
 SET MAG/WASHER
 9/19/19, JLL



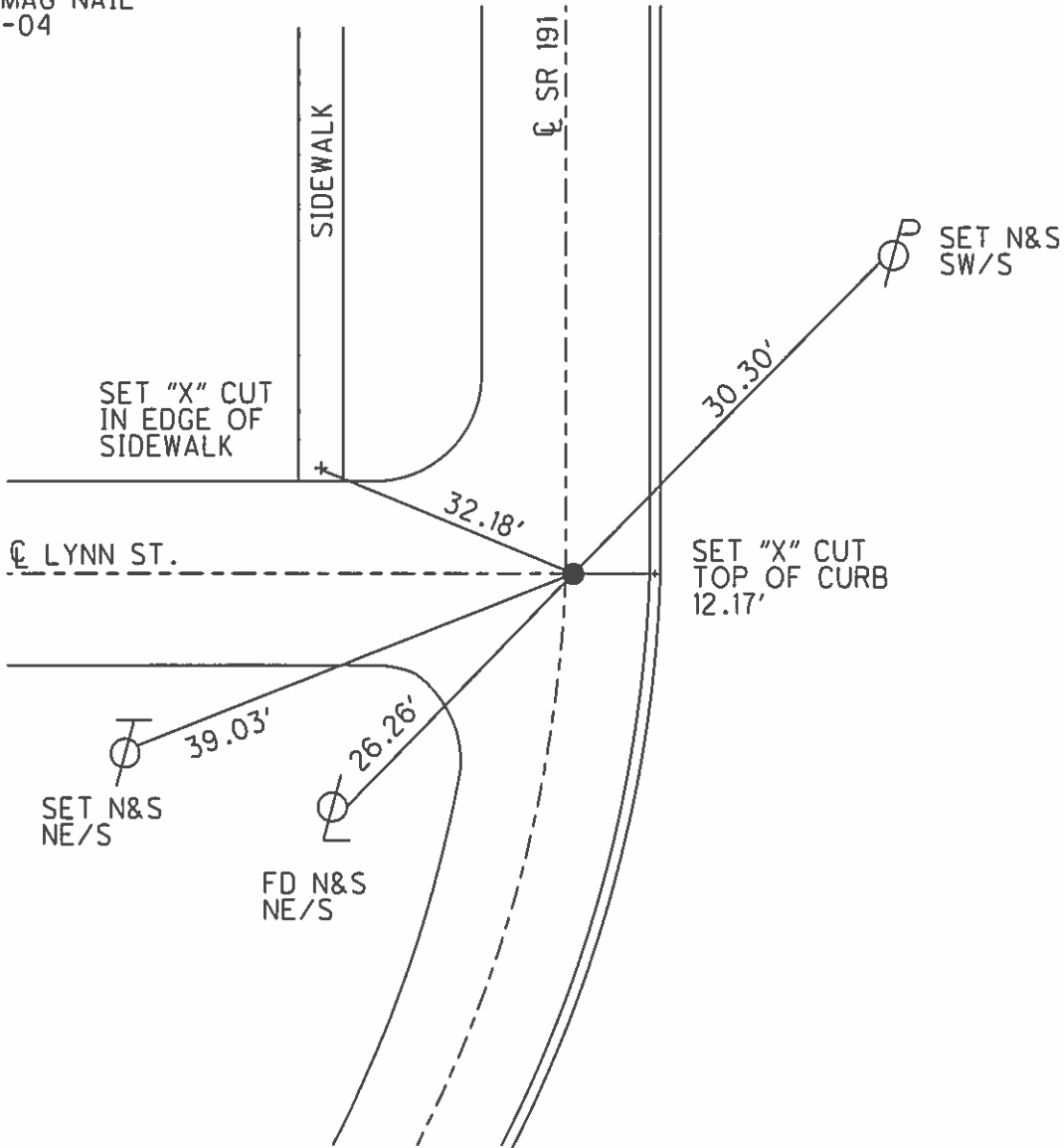
O.D.O.T. DISTRICT 2 SURVEY OFFICE (USE ONLY)

PERSONNEL _____ REFERENCE NO. 24 A SHEET 34 OF 34
 NOTES HUSS DATE 6/15/04 ROUTE SR 191
 H.C. HOMAN WEATHER CLEAR COUNTY WILLIAM
 R.C. NUHFER TEMP. 82° TOWNSHIP BRADY
 _____ SECTION 8
 _____ T 7 N R 4 E

TYPE MONUMENT P.K.NAIL
 ON SURFACE - ~~BELOW~~ ON _____
~~LEFT~~ - Q PAV'T ~~RIGHT~~ ON _____
12' TO RT EDGE PAVEMENT
 S.L.M. 565+83
 GRID: NORTHING: _____ EASTING: _____



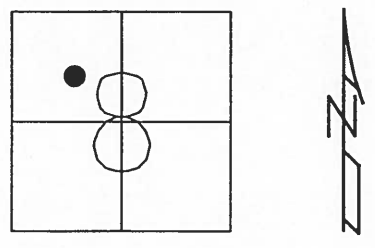
SET MAG NAIL
 8-24-04
 MB



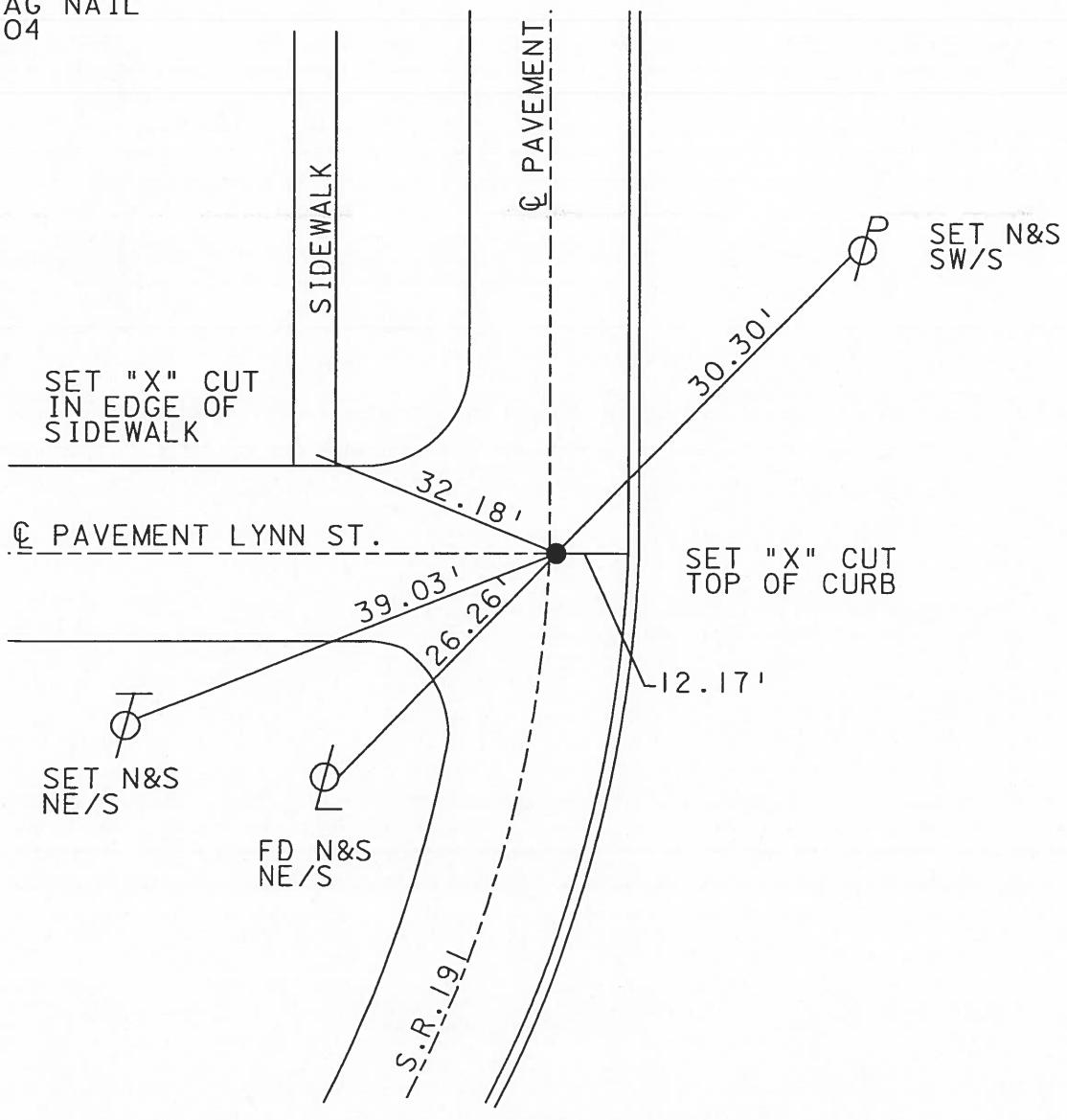
O.D.O.T. DISTRICT 2 SURVEY OFFICE

PERSONNEL	REFERENCE NO. <u>24-A</u>	SHEET <u>23</u> OF <u>23</u>
NOTES <u>HUSS</u>	DATE <u>6-15-04</u>	ROUTE <u>SR 191</u>
H.C. <u>HOMAN</u>	WEATHER <u>CLEAR</u>	COUNTY <u>WILLIAMS</u>
R.C. <u>NUHFER</u>	TEMP. <u>82°</u>	TOWNSHIP <u>BRADY</u>
		SECTION <u>8</u>
		T <u>7</u> N R <u>4</u> E

TYPE MONUMENT PK NAIL
ON SURFACE ~~BELOW~~ ON
~~LEFT - C PAV'T - RIGHT~~ ON
12' TO RT EDGE PAVEMENT
S.L.M. 565+83



SET MAG NAIL
 8-24-04
 MB



O.D.O.T. DISTRICT 2 SURVEY OFFICE

PERSONNEL _____

REFERENCE NO. _____

SHEET 22 OF 22

NOTES 1. Stone

H.C. D. Curtis

R.C. J. Hauscholder

DATE 14 Jan. 87

WEATHER Cool

TEMP. 39°

ROUTE SR#191

COUNTY Williams

TOWNSHIP Brady

SECTION 8

T. _____ R. _____

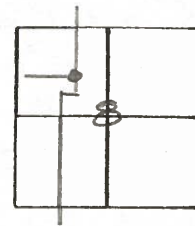
TYPE MONUMENT PK Nail

ON SURFACE - BELOW Surface

LEFT - & PAV'T. - RIGHT _____

_____ TO _____ EDGE PAVEMENT

S.L.M. 565+83



Set P.K. Nail To Surface
9-10-87

