

O.D.O.T. DISTRICT 2 SURVEY OFFICE (USE ONLY)

PERSONNEL

REFERENCE NO. 1

SHEET 1 OF 23

NOTES NIESE DATE 3/22/21  
 H.C. AUBLE WEATHER FAIR  
 R.C. NIESH TEMP. 52°

ROUTE US 20A  
 COUNTY WILLIAMS  
 TOWNSHIP BRIDGEWATER  
 SECTION 31  
 T 9 S R 3 W

DWG BY RHOADES PID 95998

TYPE MONUMENT P.K.SHANK

ON SURFACE - ~~BELOW~~ ON

OFFSET  $\text{\textcircled{C}}$  PAVEMENT ON LT : RT

12.4' TO RT EDGE PAVEMENT

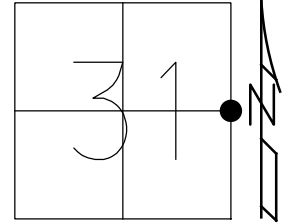
STATION: 5+06

HORZ.DATUM: NAD83 2011

GEOID: NAVD88 2012A

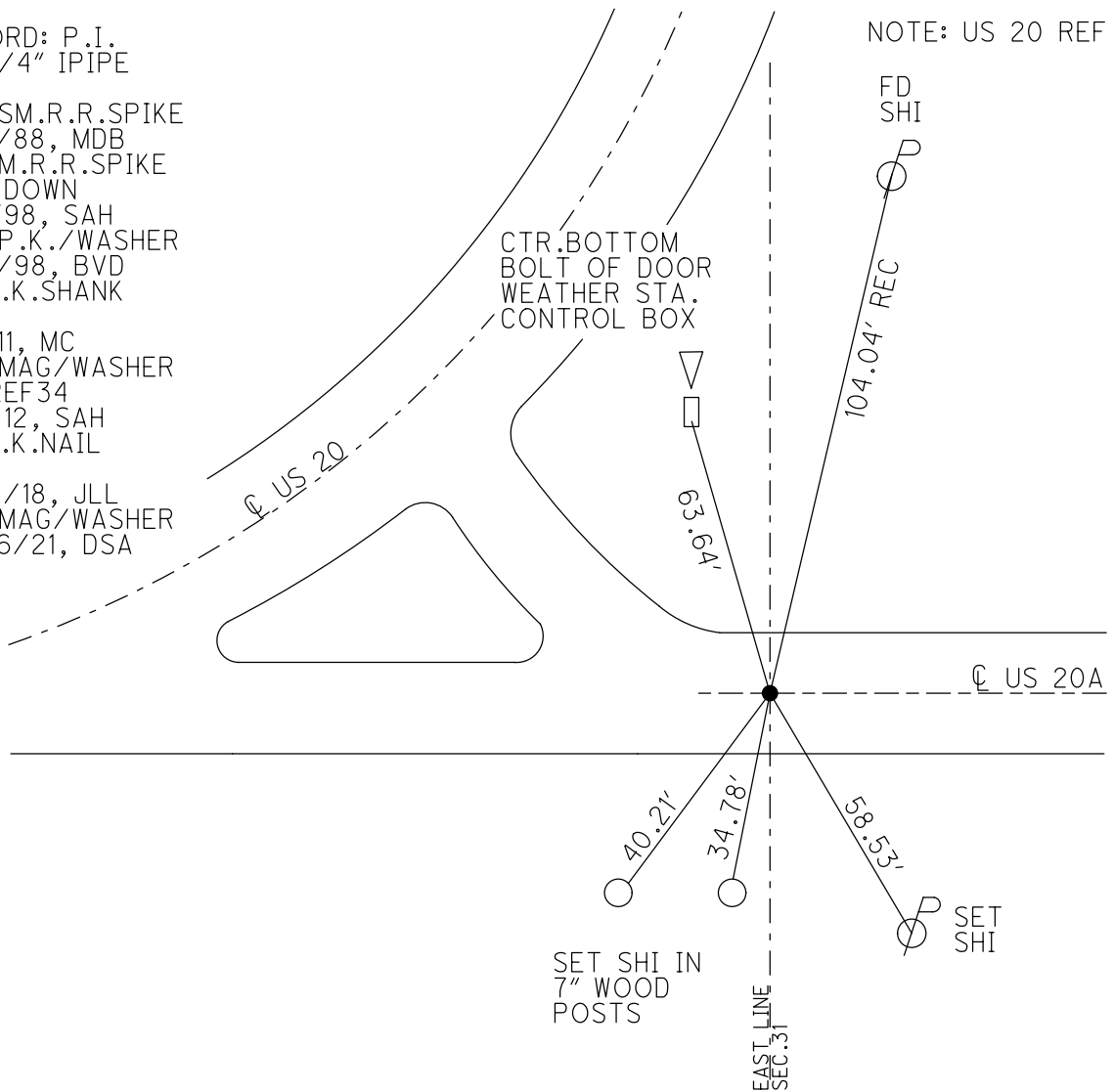
GRID: NORTHING: 727013.129

EASTING: 1401991.205



RECORD: P.I.  
 FD 3/4" IPIPE  
 1988  
 SET SM.R.R.SPIKE  
 5/31/88, MDB  
 FD SM.R.R.SPIKE  
 0.2' DOWN  
 5/4/98, SAH  
 SET P.K./WASHER  
 11/12/98, BVD  
 FD P.K.SHANK  
 SV34  
 7/1/11, MC  
 SET MAG/WASHER  
 NEWREF34  
 8/2/12, SAH  
 FD P.K.NAIL  
 REF1  
 12/14/18, JLL  
 SET MAG/WASHER  
 10/26/21, DSA

NOTE: US 20 REF 34



O.D.O.T. DISTRICT 2 SURVEY OFFICE (USE ONLY)

PERSONNEL

REFERENCE NO. 1

SHEET 1 OF 23

NOTES HUSS

DATE 4/29/12

ROUTE US 20A

H.C. CANTERBURY

WEATHER WINDY

COUNTY WILLIAMS

R.C. HARBAUGH

TEMP. 48°

TOWNSHIP BRIDGEWATER

SECTION 31

DWG BY NIESE PID \_\_\_\_\_

T 9 S R 3 W

TYPE MONUMENT P.K./WASHER

ON SURFACE - ~~BELOW~~ ON

OFFSET CL PAVEMENT ON LT : RT

12.4' TO RT EDGE PAVEMENT

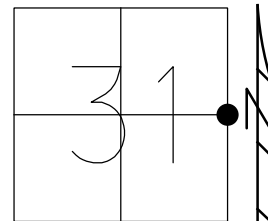
STATION: 5+06

HORZ.DATUM: \_\_\_\_\_

GEOID: \_\_\_\_\_

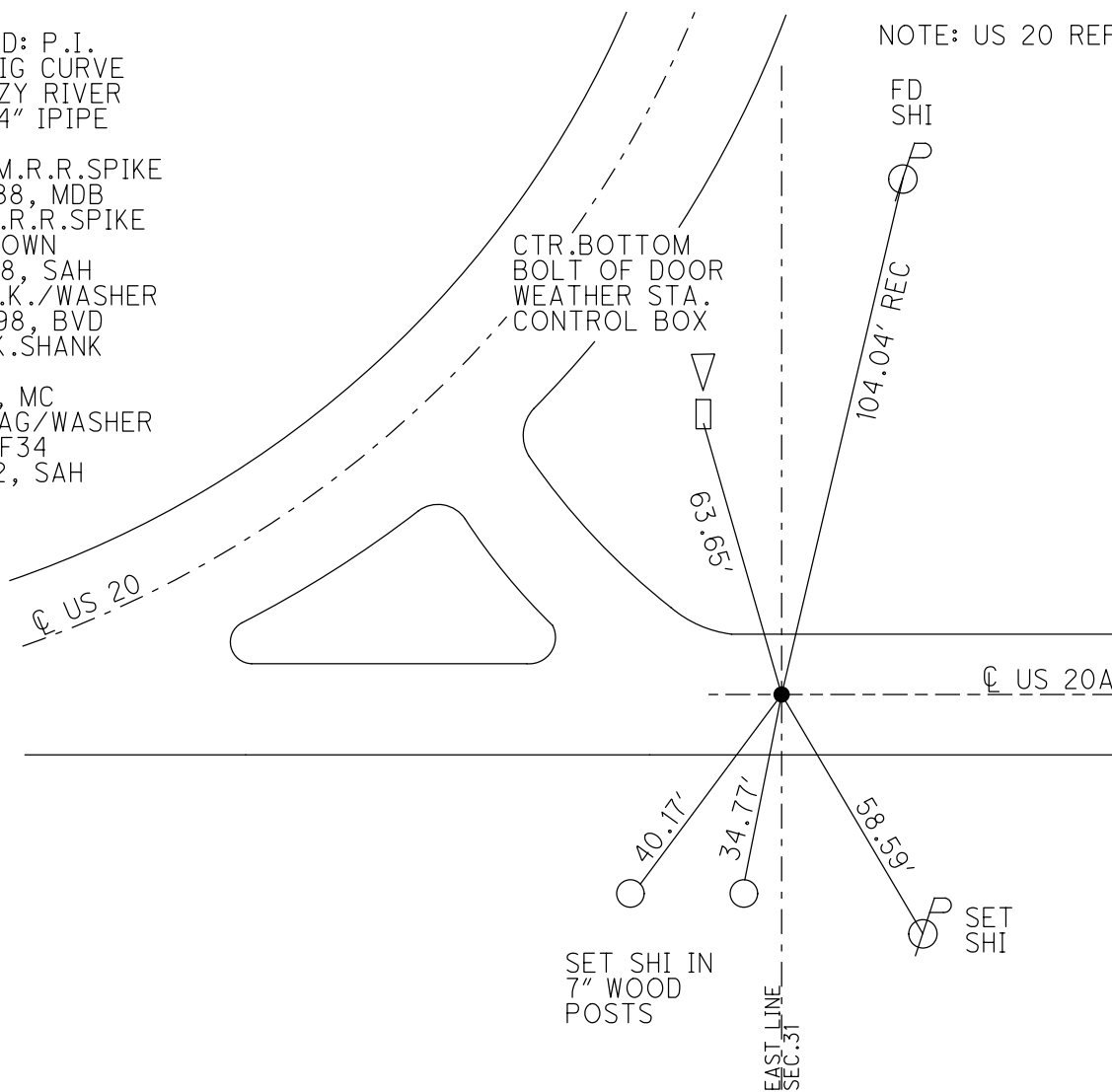
GRID: NORTHING: 727013.207

EASTING: 1401991.226



RECORD: P.I.  
FOR BIG CURVE  
AT LAZY RIVER  
FD 3/4" IPIPE  
1988  
SET SM.R.R.SPIKE  
5/31/88, MDB  
FD SM.R.R.SPIKE  
0.2' DOWN  
5/4/98, SAH  
SET P.K./WASHER  
11/12/98, BVD  
FD P.K.SHANK  
SV34  
7/1/11, MC  
SET MAG/WASHER  
NEWREF34  
8/2/12, SAH

NOTE: US 20 REF 34



# O.D.O.T. DISTRICT 2 SURVEY OFFICE

PERSONNEL

REFERENCE NO. 1

SHEET 1 OF 3

NOTES S. Huss

H.C. B. VanDusen

R.C. S. Huss

DATE 5-4-98

WEATHER Clidy-Rain

TEMP. +58° F.

ROUTE 20 A

COUNTY Williams

TOWNSHIP Bridgewater

SECTION 31

T 9 S R 2 W

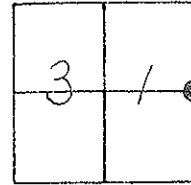
TYPE MONUMENT SMALL R.R. SPK.

~~ON SURFACE~~ - BELOW 0.2'

~~13.4'~~ - C. PAV'T. - ~~RIGHT~~ YES

13.4' TO RT. EDGE PAVEMENT

S.L.M. 5+06



This point is also  
Ref #34 for SR-20  
S.M.

Set PKW BUD  
11-12-98

