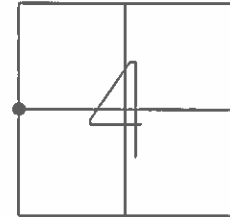


O.D.O.T. DISTRICT 2 SURVEY OFFICE (USE ONLY)

PERSONNEL _____ REFERENCE NO. 4 C SHEET 3 OF 21
 NOTES RHOADES _____ DATE 8/24/16 ROUTE US 20A
 H.C. O'DONNELL _____ WEATHER CLOUDY COUNTY WILLIAMS
 R.C. TODD _____ TEMP. 72° TOWNSHIP MADISON
 _____ SECTION 4
 _____ T 10 S R 2 W

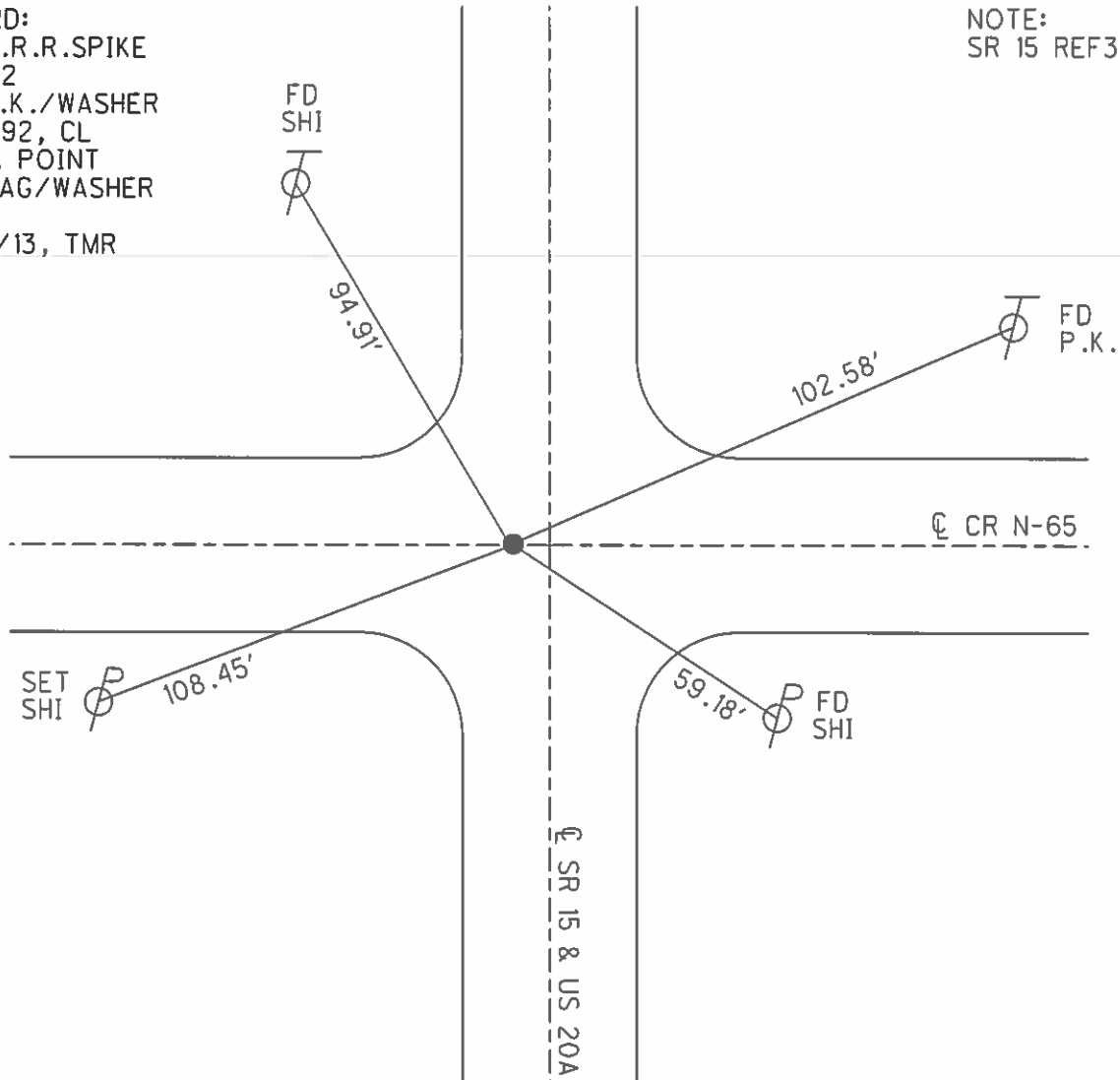
TYPE MONUMENT MAG/WASHER
 ON SURFACE - ~~BELOW~~ ON _____
~~LEFT~~ - CL PAV'T - RIGHT 5.2'
 - TO - EDGE PAVEMENT
 S.L.M. 97+68



GRID: NORTHING: 721658.599 EASTING: 1407069.135

RECORD:
 FD SM.R.R.SPIKE
 7/6/92
 SET P.K./WASHER
 9/22/92, CL
 D.N.F. POINT
 SET MAG/WASHER
 REF32
 10/23/13, TMR

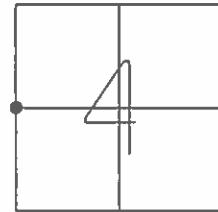
NOTE:
 SR 15 REF32



O.D.O.T. DISTRICT 2 SURVEY OFFICE (USE ONLY)

PERSONNEL _____ REFERENCE NO. 32 SHEET 3 OF 40
 NOTES RHOADES DATE 8/24/16 ROUTE SR 15
 H.C. O'DONNELL WEATHER CLOUDY COUNTY WILLIAMS
 R.C. TODD TEMP. 72° TOWNSHIP MADISON
 SECTION 4
 T 10 S R 2 W

TYPE MONUMENT MAG/WASHER
 ON SURFACE - ~~BELOW~~ ON
~~LEFT~~ - CL PAV'T - RIGHT 5.2'
- TO - EDGE PAVEMENT
 S.L.M. 459+85.89



GRID: NORTHING: 721658.599 EASTING: 1407069.135

RECORD:
 FD SM.R.R.SPIKE
 7/6/92
 SET P.K./WASHER
 9/22/92, CL
 D.N.F. POINT
 SET MAG/WASHER
 REF32
 10/23/13, TMR

NOTE:
 US 20A REF4C

