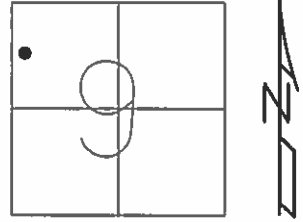


O.D.O.T. DISTRICT 2 SURVEY OFFICE (USE ONLY)

PERSONNEL _____ REFERENCE NO. 4 E SHEET 5 OF 21
 NOTES LEU DATE 3/29/16 ROUTE US 20A
 H.C. HOMAN WEATHER SUNNY COUNTY WILLIAMS
 R.C. LEU TEMP. 40° TOWNSHIP MADISON
 SECTION 9
 T 10 S R 2 W

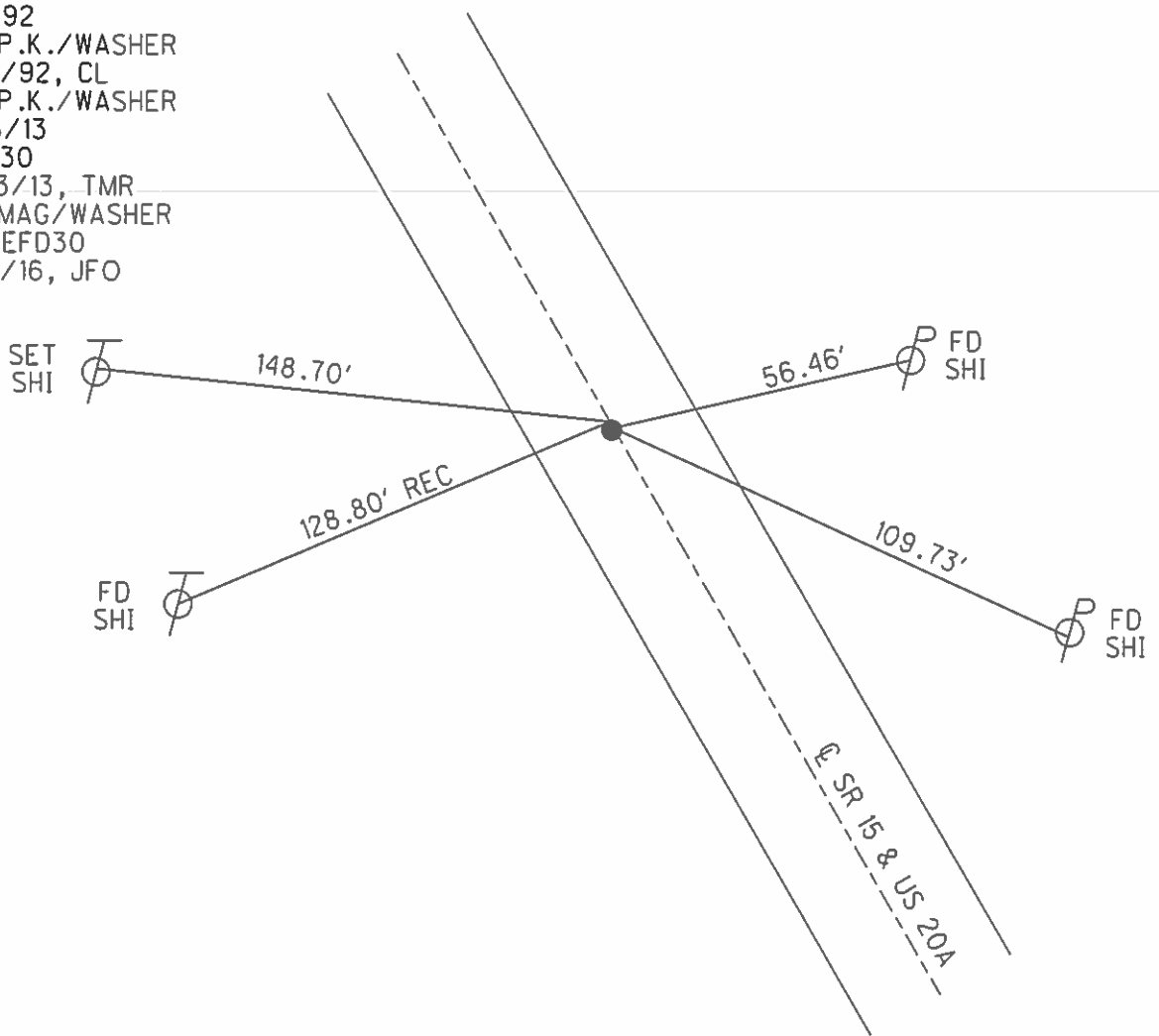
TYPE MONUMENT P.K./WASHER
 ON SURFACE - ~~BELOW~~ ON
~~LEFT~~ - CL PAV'T - RIGHT 0.4'
10.7' TO W EDGE PAVEMENT
 S.L.M. 131+19.46



GRID: NORTHING: 718314.223 EASTING: 1407130.048

RECORD:
 FD P.K./WASHER
 7/6/92
 SET P.K./WASHER
 9/22/92, CL
 SET P.K./WASHER
 10/18/13
 REFD30
 10/23/13, TMR
 SET MAG/WASHER
 NEWREFD30
 8/24/16, JFO

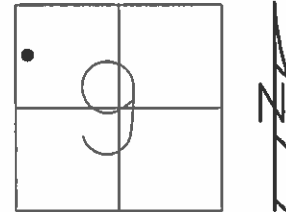
NOTE:
 SR 15 REF30D



O.D.O.T. DISTRICT 2 SURVEY OFFICE (USE ONLY)

PERSONNEL _____ REFERENCE NO. 30 D SHEET 5 OF 40
 NOTES LEU DATE 3/29/16 ROUTE SR 15
 H.C. HOMAN WEATHER SUNNY COUNTY WILLIAMS
 R.C. LEU TEMP. 40° TOWNSHIP MADISON
 SECTION 9
 T 10 S R 2 W

TYPE MONUMENT P.K./WASHER
 ON SURFACE - ~~BELOW~~ ON
~~LEFT~~ - CL PAV'T - RIGHT 0.4'
10.7' TO W EDGE PAVEMENT
 S.L.M. 493+37.53



GRID: NORTHING: 718314.223 EASTING: 1407130.048

RECORD:
 FD P.K./WASHER
 7/6/92
 SET P.K./WASHER
 9/22/92, CL
 SET P.K./WASHER
 10/18/13
 REFD30
 10/23/13, TMR
 SET MAG/WASHER
 NEWREFD30
 8/24/16, JFO

NOTE:
 US 20A REF4E

