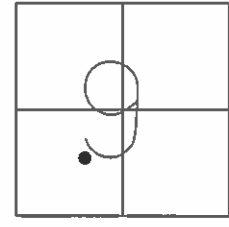


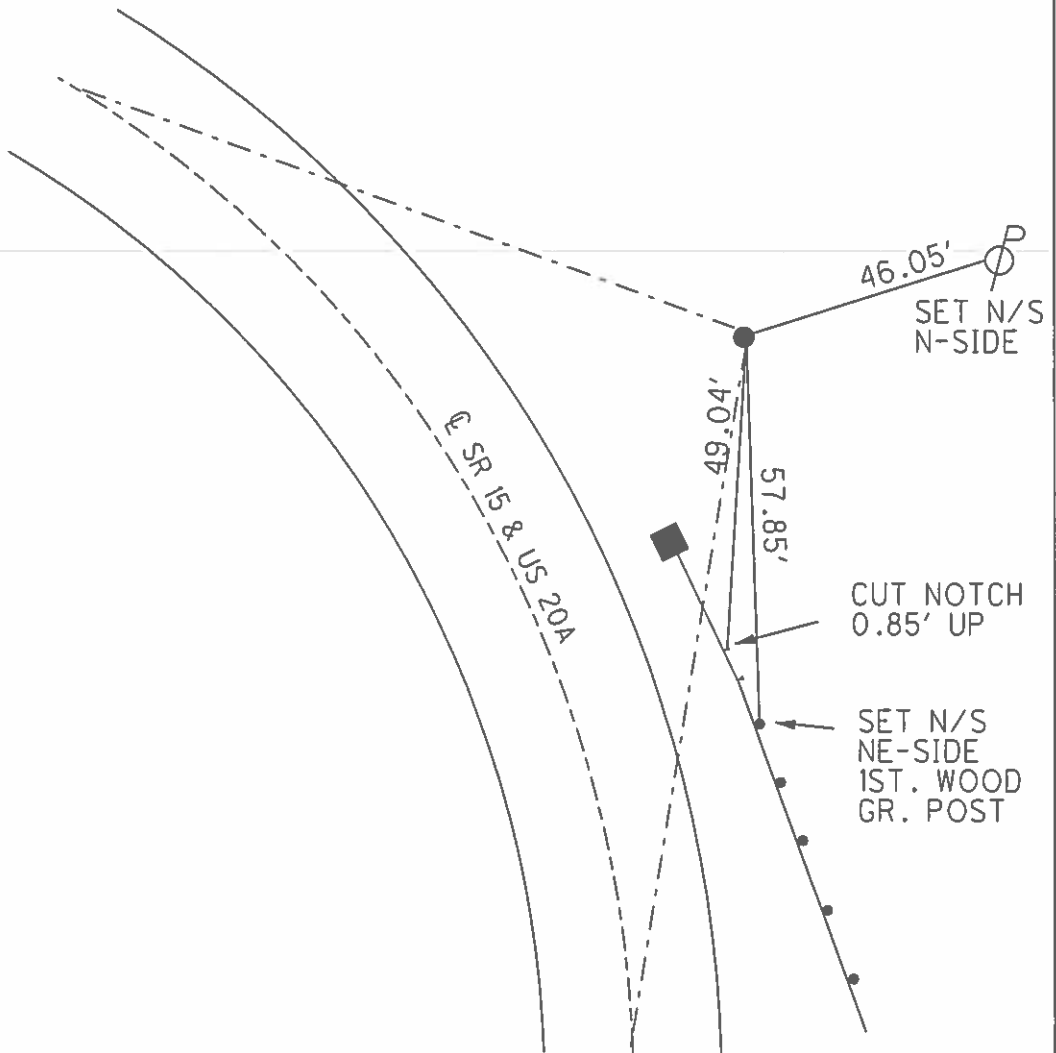
O.D.O.T. DISTRICT 2 SURVEY OFFICE (USE ONLY)

PERSONNEL	REFERENCE NO.	4 F	SHEET	6	OF	21
NOTES	NUHFER	DATE	7/26/07	ROUTE	US 20A	
H.C.	HUSS	WEATHER	MILD	COUNTY	WILLIAMS	
R.C.	VIETH	TEMP.	70°	TOWNSHIP	MADISON	
				SECTION	9	
				T	10	S
				R	2	W

TYPE MONUMENT 5/8" THREADED IPIN
~~ON SURFACE~~ - BELOW 0.2'
 LEFT - ☉ PAV'T - ~~RIGHT~~ -
 53.8' LT TO E EDGE PAVEMENT
 S.L.M. 136+86.34
 GRID: NORTHING: 717757.292 EASTING: 1407278.109



NOTE:
SR 15 REF30CD



O.D.O.T. DISTRICT 2 SURVEY OFFICE (USE ONLY)

PERSONNEL	REFERENCE NO.	30 CD	SHEET	6	OF	40
NOTES	NUHFER	DATE	7/26/07	ROUTE	SR 15	
H.C.	HUSS	WEATHER	MILD	COUNTY	WILLIAMS	
R.C.	VIETH	TEMP.	70°	TOWNSHIP	MADISON	
				SECTION	9	
				T	10	S
				R	2	W

TYPE MONUMENT 5/8" THREADED IPIN

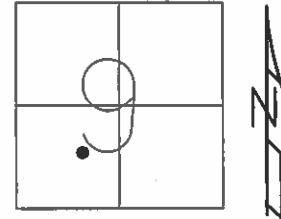
~~ON SURFACE~~ - BELOW 0.2'

LEFT - ☉ PAV'T - ~~RIGHT~~ -

53.8' LT TO E EDGE PAVEMENT

S.L.M. 499+04.23

GRID: NORTHING: 717757.292 EASTING: 1407278.109



NOTE:
US 20A REF4F

