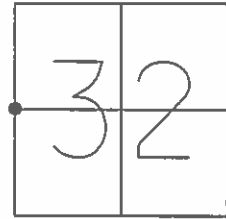


O.D.O.T. DISTRICT 2 SURVEY OFFICE (USE ONLY)

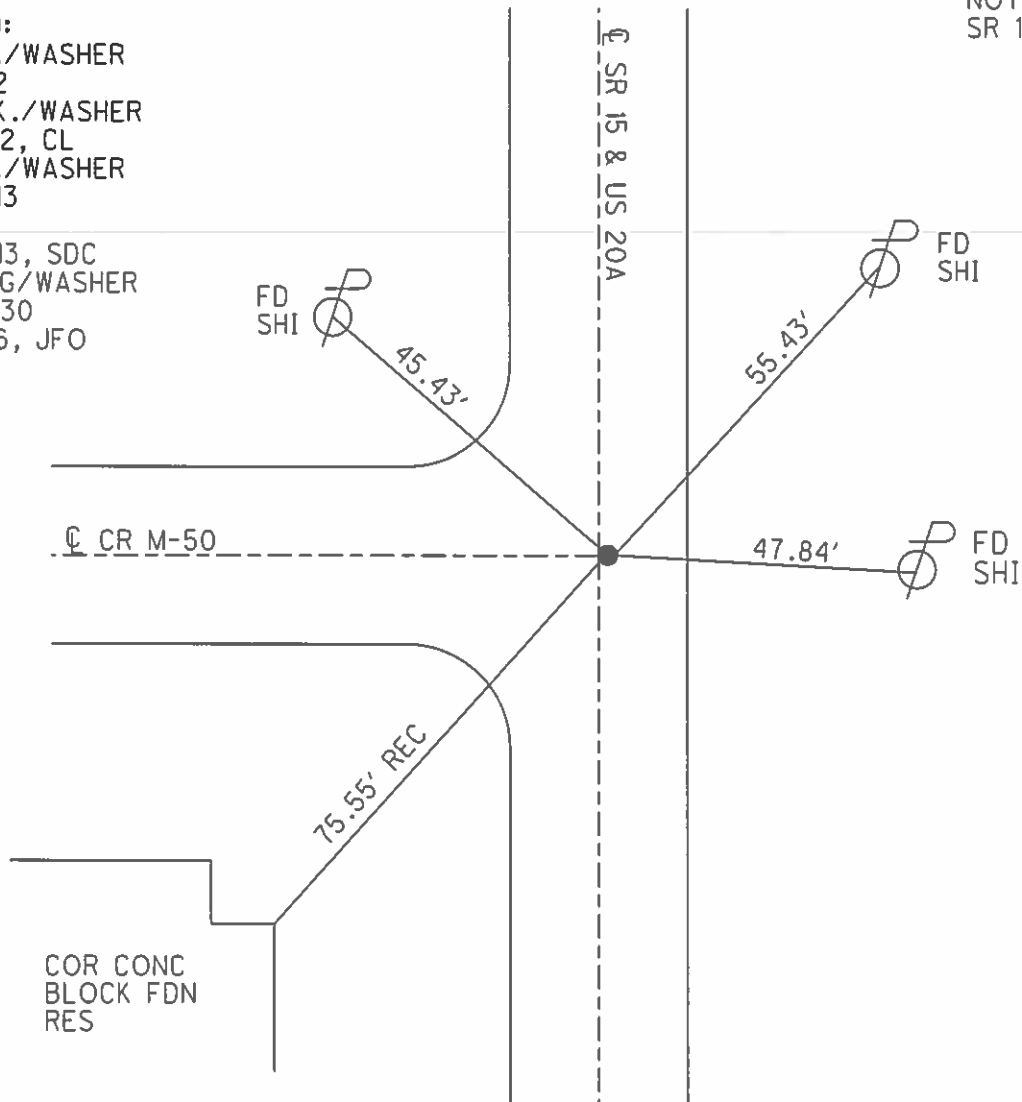
PERSONNEL _____ REFERENCE NO. 4 K SHEET 12 OF 21
 NOTES LEU DATE 3/29/16 ROUTE US 20A
 H.C. HOMAN WEATHER SUNNY COUNTY WILLIAMS
 R.C. LEU TEMP. 47° TOWNSHIP JEFFERSON
 _____ SECTION 32
 _____ T 8 N R 3 E

TYPE MONUMENT P.K.NAIL
 ON SURFACE - ~~BELOW~~ ON
~~LEFT~~ - CL PAV'T - RIGHT 0.6'
12.6' TO LT EDGE PAVEMENT
 S.L.M. 175+97
 GRID: NORTHING: 713954.292 EASTING: 1406354.945



RECORD:
 FD P.K./WASHER
 7/16/92
 SET P.K./WASHER
 9/22/92, CL
 FD P.K./WASHER
 10/22/13
 REF30
 10/23/13, SDC
 SET MAG/WASHER
 NEWREF30
 8/25/16, JFO

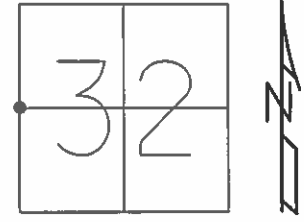
NOTE:
 SR 15 REF30



O.D.O.T. DISTRICT 2 SURVEY OFFICE (USE ONLY)

PERSONNEL _____ REFERENCE NO. 30 SHEET 12 OF 40
 NOTES LEU _____ DATE 3/29/16 ROUTE SR 15
 H.C. HOMAN _____ WEATHER SUNNY COUNTY WILLIAMS
 R.C. LEU _____ TEMP. 47° TOWNSHIP JEFFERSON
 _____ SECTION 32
 _____ T 8 N R 3 E

TYPE MONUMENT P.K.NAIL
 ON SURFACE - ~~BELOW~~ ON _____
~~LEFT~~ - Q PAV'T - RIGHT 0.6'
12.6' TO LT EDGE PAVEMENT
 S.L.M. 538+32.53
 GRID: NORTHING: 713954.292 EASTING: 1406354.945



RECORD:
 FD P.K./WASHER
 7/16/92
 SET P.K./WASHER
 9/22/92, CL
 FD P.K./WASHER
 10/22/13
 REF30
 10/23/13, SDC
 SET MAG/WASHER
 NEWREF30
 8/25/16, JFO

NOTE:
 US 20A REF4K

