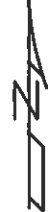
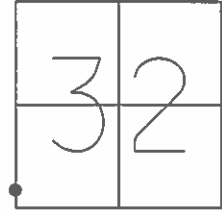


O.D.O.T. DISTRICT 2 SURVEY OFFICE (USE ONLY)

PERSONNEL \_\_\_\_\_ REFERENCE NO. 4 N SHEET 15 OF 21  
NOTES LOEHRKE DATE 7/16/92 ROUTE US 20A  
H.C. CURTIS WEATHER CLOUDY COUNTY WILLIAMS  
R.C. ROMETO TEMP. 70° TOWNSHIP JEFFERSON  
FALKOWSKI SECTION 32  
T 8 N R 3 E

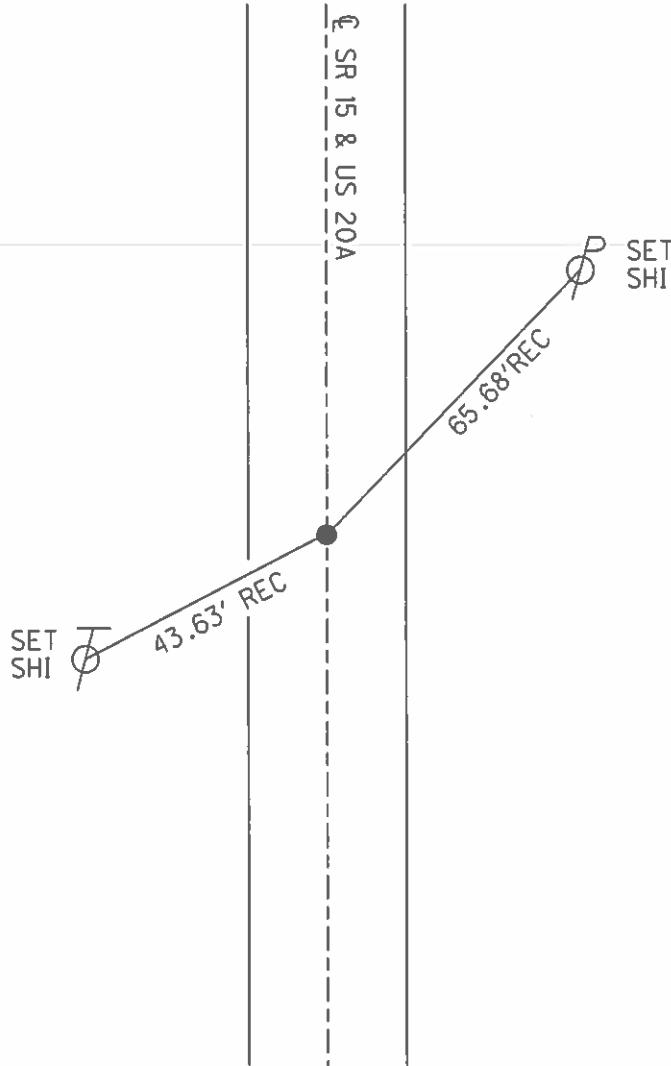
TYPE MONUMENT P.K./WASHER  
ON SURFACE - ~~BELOW~~ ON \_\_\_\_\_  
LEFT - ☉ PAV'T - ~~RIGHT~~ 0.9'  
11.3' TO LT EDGE PAVEMENT  
S.L.M. 199+42



GRID: NORTHING: \_\_\_\_\_ EASTING: \_\_\_\_\_

REORD:  
SET P.K./WASHER  
9/22/92, CL  
DNF, 10/22/13

NOTE:  
SR 15 REF29A



O.D.O.T. DISTRICT 2 SURVEY OFFICE (USE ONLY)

PERSONNEL \_\_\_\_\_ REFERENCE NO. 29 A SHEET 15 OF 40

NOTES LOHRKE DATE 7/16/92 ROUTE SR 15  
H.C. CURTIS WEATHER CLOUDY COUNTY WILLIAMS  
R.C. ROMETO TEMP. 70° TOWNSHIP JEFFERSON  
FALKOWSKI SECTION 32  
T 8 N R 3 E

TYPE MONUMENT P.K./WASHER

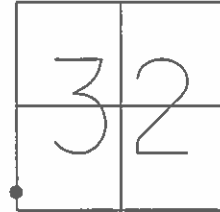
ON SURFACE - ~~BELOW~~ ON \_\_\_\_\_

LEFT - ☉ PAV'T - ~~RIGHT~~ 0.9'

11.3' TO LT EDGE PAVEMENT

S.L.M. 561+81 ±, ( 199+42 US 20A )

GRID: NORTHING: \_\_\_\_\_ EASTING: \_\_\_\_\_



REORD:  
SET P.K./WASHER  
9/22/92, CL  
DNF, 10/22/13

NOTE:  
US 20A REF4N

