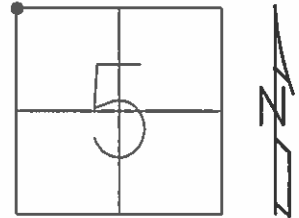


O.D.O.T. DISTRICT 2 SURVEY OFFICE (USE ONLY)

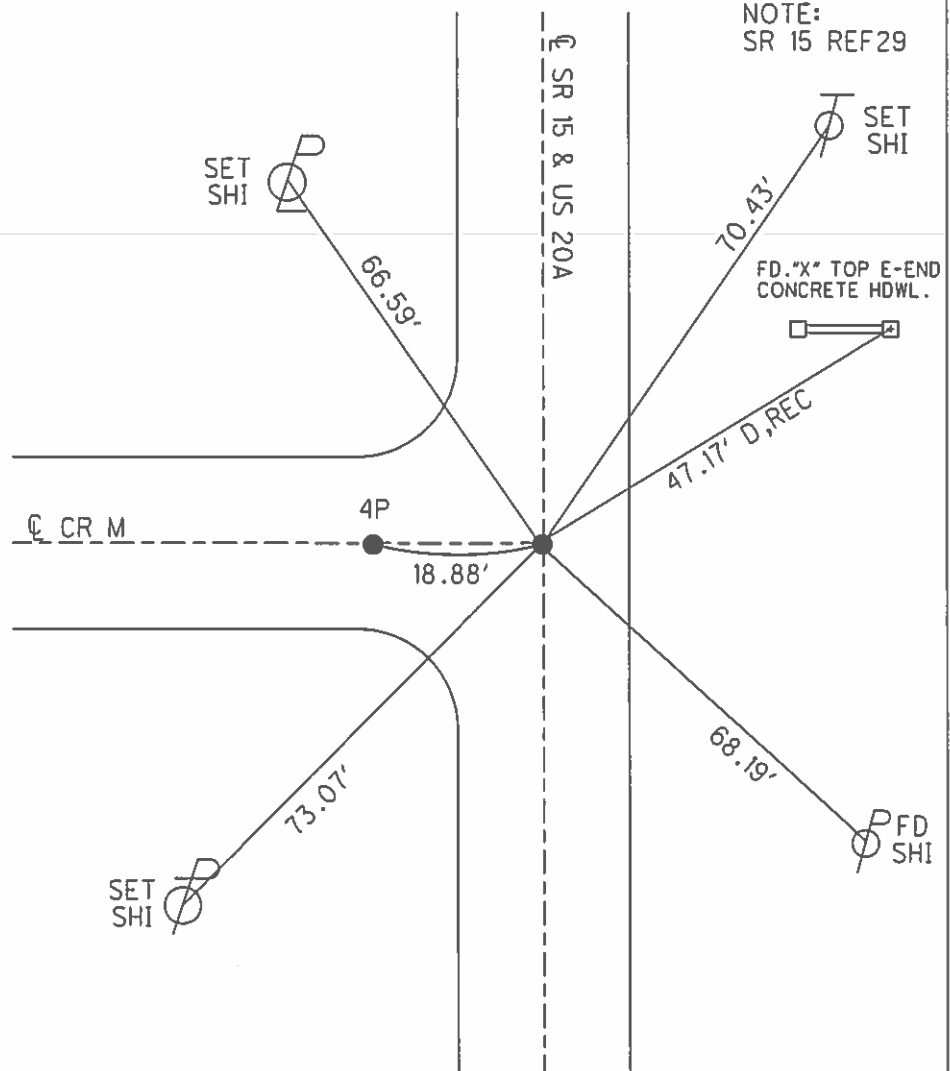
PERSONNEL _____ REFERENCE NO. 4 "0" SHEET 16 OF 21
 NOTES NUHFER DATE 6/20/07 ROUTE US 20A
 H.C. NUHFER WEATHER SUNNY COUNTY WILLIAMS
 R.C. HUSS TEMP. 75° TOWNSHIP JEFFERSON
 _____ SECTION 5
 _____ T 7 N R 3 E

TYPE MONUMENT P.K./WASHER
 ON SURFACE - ~~BELOW~~ ON
 LEFT - ☉ PAV'T - RIGHT ON
11.5' TOLT EDGE PAVEMENT
 S.L.M. 202+40
 GRID: NORTHING: 711309.087 EASTING: 1406275.735



RECORD:
 FD P.K./WASHER
 7/16/92
 SET P.K./WASHER
 9/22/92, CL
 FD P.K./WASHER
 10/22/13
 REF29
 10/23/13, TMR
 SET MAG/WASHER
 NEWREF29
 8/29/16, JFO

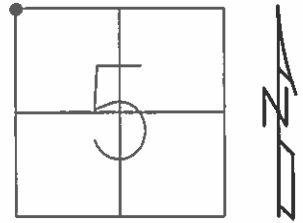
NOTE:
 SR 15 REF29



O.D.O.T. DISTRICT 2 SURVEY OFFICE (USE ONLY)

PERSONNEL _____ REFERENCE NO. 29 SHEET 16 OF 40
 NOTES NUHFER _____ DATE 6/20/07 ROUTE SR 15
 H.C. NUHFER _____ WEATHER SUNNY COUNTY WILLIAMS
 R.C. HUSS _____ TEMP. 75° TOWNSHIP JEFFERSON
 _____ SECTION 5
 _____ T 7 N R 3 E

TYPE MONUMENT P.K./WASHER
 ON SURFACE - ~~BELOW~~ ON
 LEFT - ☉ PAV'T - RIGHT ON
11.5' TOLT EDGE PAVEMENT
 S.L.M. 564+79.48
 GRID: NORTHING: 711309.087 EASTING: 1406275.735



RECORD:
 FD P.K./WASHER
 7/16/92
 SET P.K./WASHER
 9/22/92, CL
 FD P.K./WASHER
 10/22/13
 REF29
 10/23/13, TMR
 SET MAG/WASHER
 NEWREF29
 8/29/16, JFO

NOTE:
 US 20A REF 4"O"

