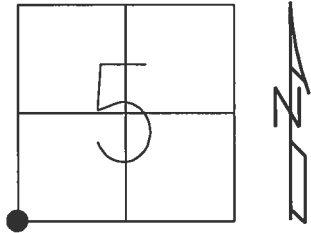


O.D.O.T. DISTRICT 2 SURVEY OFFICE (USE ONLY)

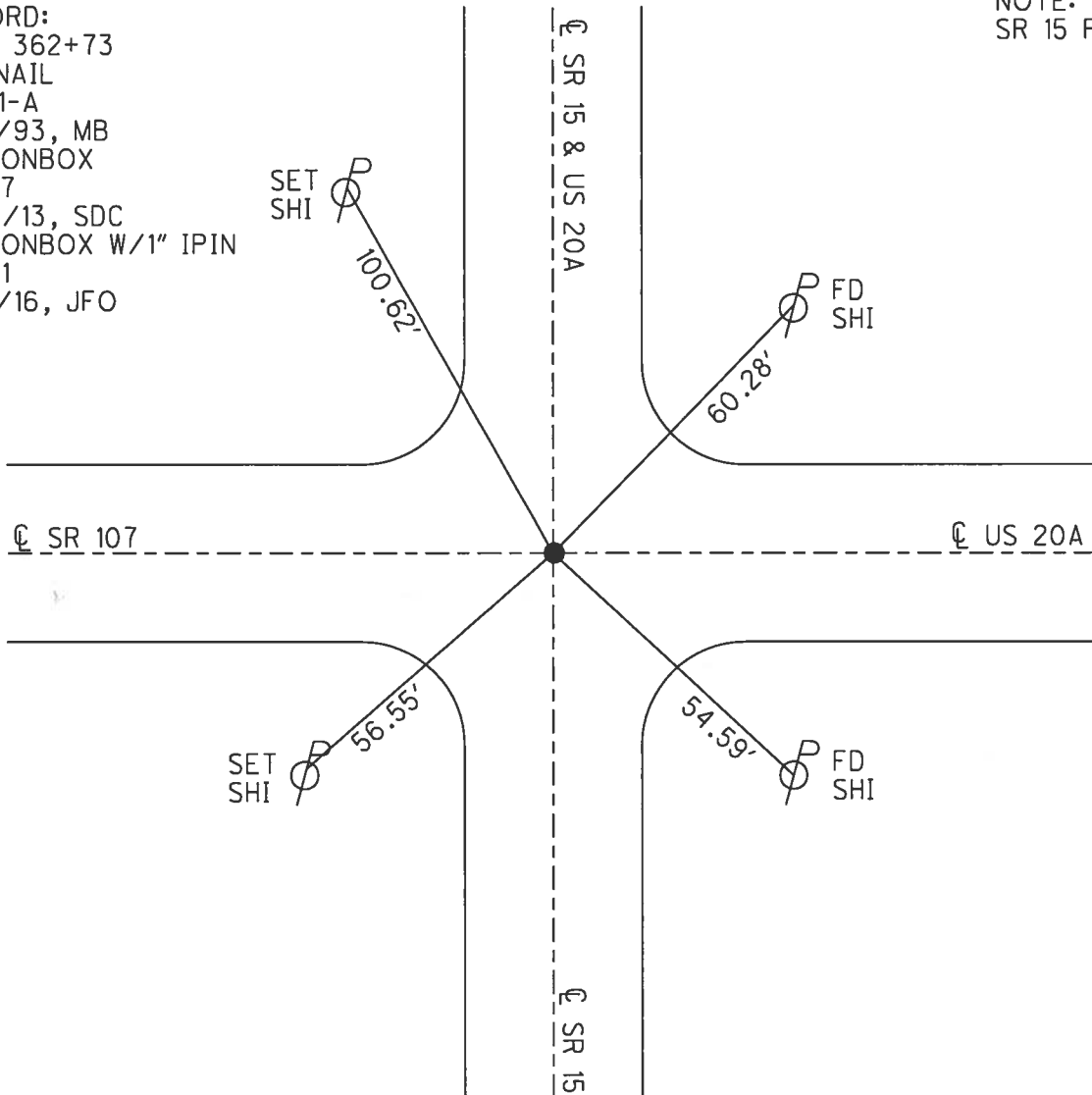
PERSONNEL _____ REFERENCE NO. 1 A SHEET 1 OF 32
 NOTES BARNHISEL DATE 12/6/93 ROUTE US 20A
 H.C. VAN DUSEN WEATHER RAIN COUNTY WILLIAMS
 R.C. CORDES TEMP. 40° TOWNSHIP JEFFERSON
 _____ SECTION 5
 _____ T 7 N R 3 E

TYPE MONUMENT P.K.NAIL
 ON SURFACE - ~~BELOW~~ _____ ON _____
 LEFT - ☉ PAV'T - RIGHT _____ ON _____
 _____ TO _____ EDGE PAVEMENT
 S.L.M. 251+60.00
 GRID: NORTHING: 706139.578 EASTING: 1406138.575



RECORD:
 STA. 362+73
 P.K.NAIL
 REF 1-A
 12/6/93, MB
 FD MONBOX
 REF27
 9/23/13, SDC
 FD MONBOX W/1" IPIN
 REFA1
 5/16/16, JFO

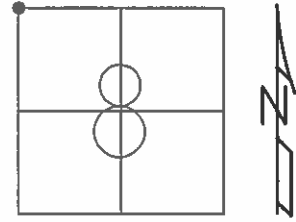
NOTE:
 SR 15 REF27



O.D.O.T. DISTRICT 2 SURVEY OFFICE (USE ONLY)

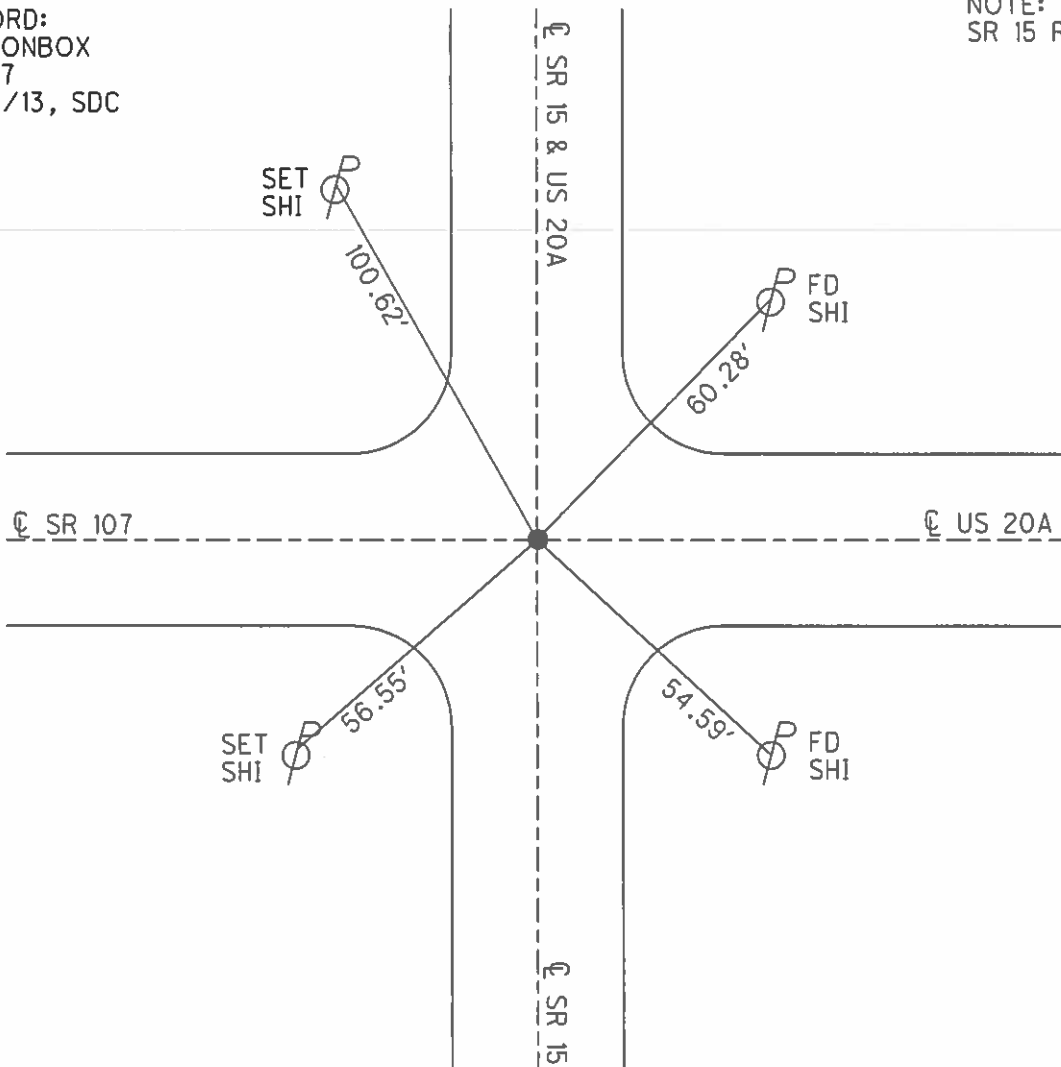
PERSONNEL _____ REFERENCE NO. 4 T SHEET 21 OF 21
 NOTES BARNHISEL DATE 12/6/93 ROUTE US 20A
 H.C. VAN DUSEN WEATHER RAIN COUNTY WILLIAMS
 R.C. CORDES TEMP. 40° TOWNSHIP JEFFERSON
 _____ SECTION 8
 _____ T 7 N R 3 E

TYPE MONUMENT P.K.NAIL
 ON SURFACE - ~~BELOW~~ _____ ON _____
 LEFT - ☉ PAV'T - RIGHT _____ ON _____
 _____ TO _____ EDGE PAVEMENT
 S.L.M. 362+73
 GRID: NORTHING: 706139.598 EASTING: 1406138.589



RECORD:
 FD MONBOX
 REF27
 9/23/13, SDC

NOTE:
 SR 15 REF27

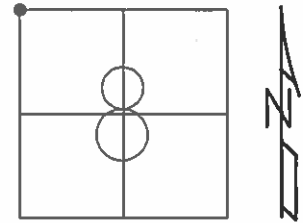


O.D.O.T. DISTRICT 2 SURVEY OFFICE (USE ONLY)

PERSONNEL _____ REFERENCE NO. 27 SHEET 21 OF 40

NOTES BARNHISEL DATE 12/6/93 ROUTE SR 15
 H.C. VAN DUSEN WEATHER RAIN COUNTY WILLIAMS
 R.C. CORDES TEMP. 40° TOWNSHIP JEFFERSON
 _____ SECTION 8
 _____ T 7 N R 3 E

TYPE MONUMENT P.K.NAIL
 ON SURFACE - ~~BELOW~~ _____ ON _____
 LEFT - ☉ PAV'T - RIGHT _____ ON _____
 _____ TO _____ EDGE PAVEMENT
 S.L.M. 616+51.12



GRID: NORTHING: 706139.598 EASTING: 1406138.589

RECORD:
 FD MONBOX
 REF27
 9/23/13, SDC

NOTE:
 US 20A REF4T

