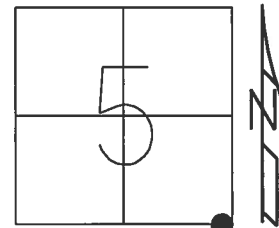


O.D.O.T. DISTRICT 2 SURVEY OFFICE (USE ONLY)

PERSONNEL \_\_\_\_\_ REFERENCE NO. 3 SHEET 3 OF 32

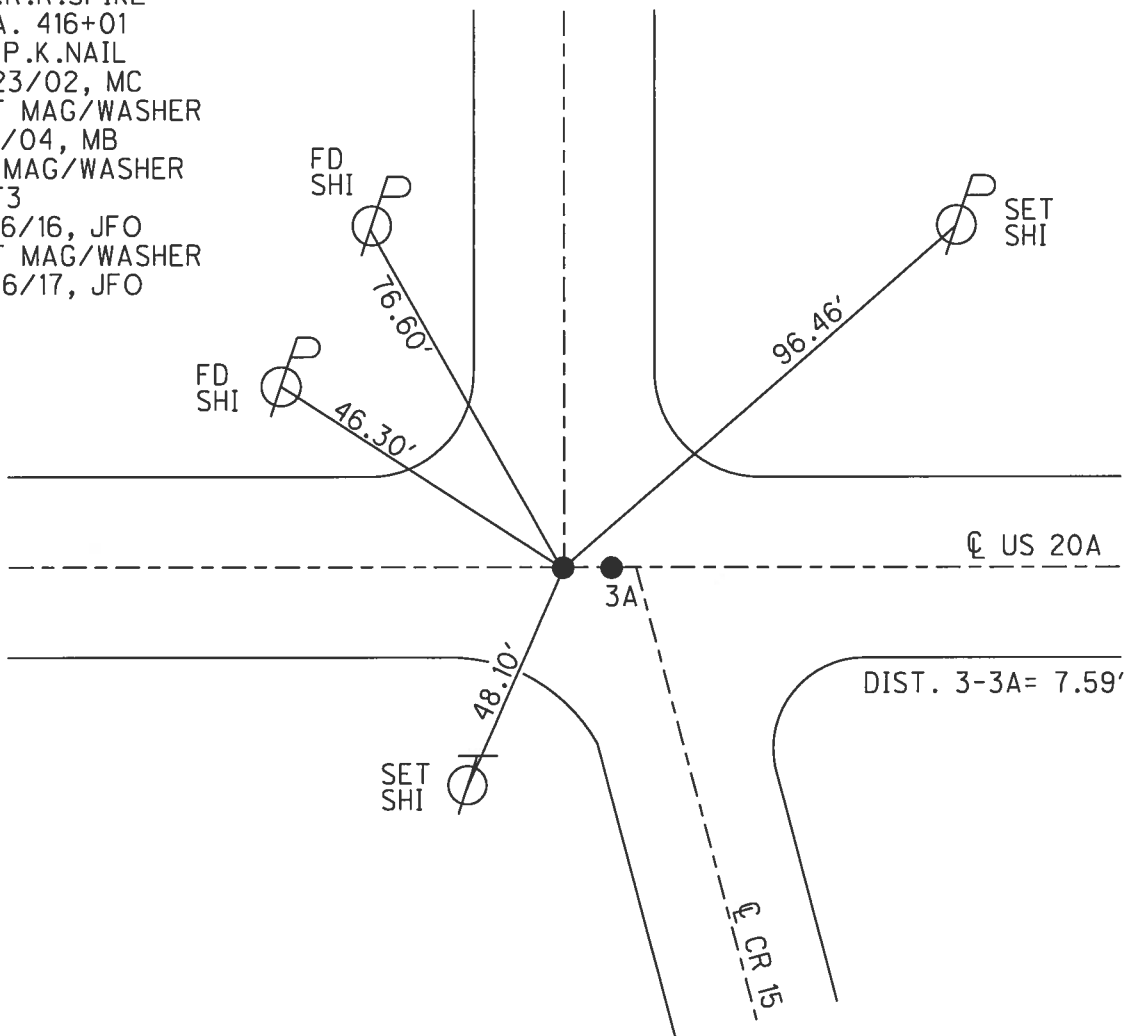
NOTES RHOADES DATE 4/13/17 ROUTE US 20 A  
 H.C. O'DONNELL WEATHER CLOUDY COUNTY WILLIAMS  
 R.C. HELDMAN TEMP. 49° TOWNSHIP JEFFERSON  
 SECTION 5  
T 7 N R 3 E

TYPE MONUMENT MAG/WASHER  
 ON SURFACE - ~~BELOW~~ ON \_\_\_\_\_  
 LEFT - ☉ PAV'T - RIGHT ON \_\_\_\_\_  
 - TO - EDGE PAVEMENT  
 S.L.M. 304+84.61



Grid: Northing: 705953.523 Easting: 1411459.557

RECORD: 1989  
 SM.R.R.SPIKE  
 STA. 416+01  
 FD P.K.NAIL  
 5/23/02, MC  
 SET MAG/WASHER  
 1/2/04, MB  
 FD MAG/WASHER  
 REF3  
 5/16/16, JFO  
 SET MAG/WASHER  
 11/16/17, JFO



# O.D.O.T. DISTRICT 2 SURVEY OFFICE

PERSONNEL

REFERENCE NO. 3+3A

SHEET 2 OF 28

NOTES MALINSKY

H.C. CANTERBURY

R.C. BEAUMONT

DATE 5-23-02

WEATHER Sun

TEMP. +62°

ROUTE U.S. 20-A

COUNTY Williams

TOWNSHIP Jefferson

SECTION 5

T 7 N R 3 E

"A" - Fd P.K. NAIL @ Co. Rd 15 N.

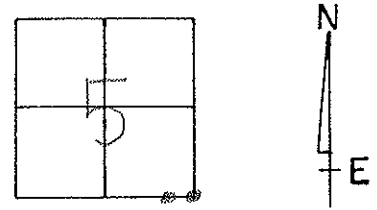
TYPE MONUMENT "B" - Fd P.K. NAIL 2' W of Co Rd 15 South

ON SURFACE - ~~BELOW~~ on surface

LEFT - ~~PAV'T.~~ PAV'T. - RIGHT PAV'T.

TO EDGE PAVEMENT

S.L.M. "A" 416+01 / "B" 416+08



RECORD: PT "A" SMALL RR. SPR.

PT "B" SURV. CAP FROM 1989 NOTES

RESET MAG/WASHER @ BOTH  
1-02-04  
M.B.

