

O.D.O.T. DISTRICT 2 SURVEY OFFICE (USE ONLY)

PERSONNEL \_\_\_\_\_ REFERENCE NO. 3 A SHEET 4 OF 32

NOTES RHOADES DATE 4/13/17 ROUTE US 20 A  
 H.C. O'DONNELL WEATHER CLOUDY COUNTY WILLIAMS  
 R.C. HELDMAN TEMP. 49° TOWNSHIP JEFFERSON  
 \_\_\_\_\_ SECTION 4  
 \_\_\_\_\_ T 7 N R 3 E

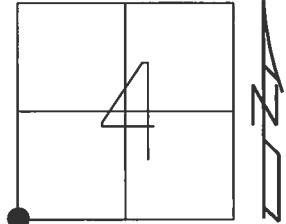
TYPE MONUMENT MAG NAIL

ON SURFACE - ~~BELOW~~ ON \_\_\_\_\_

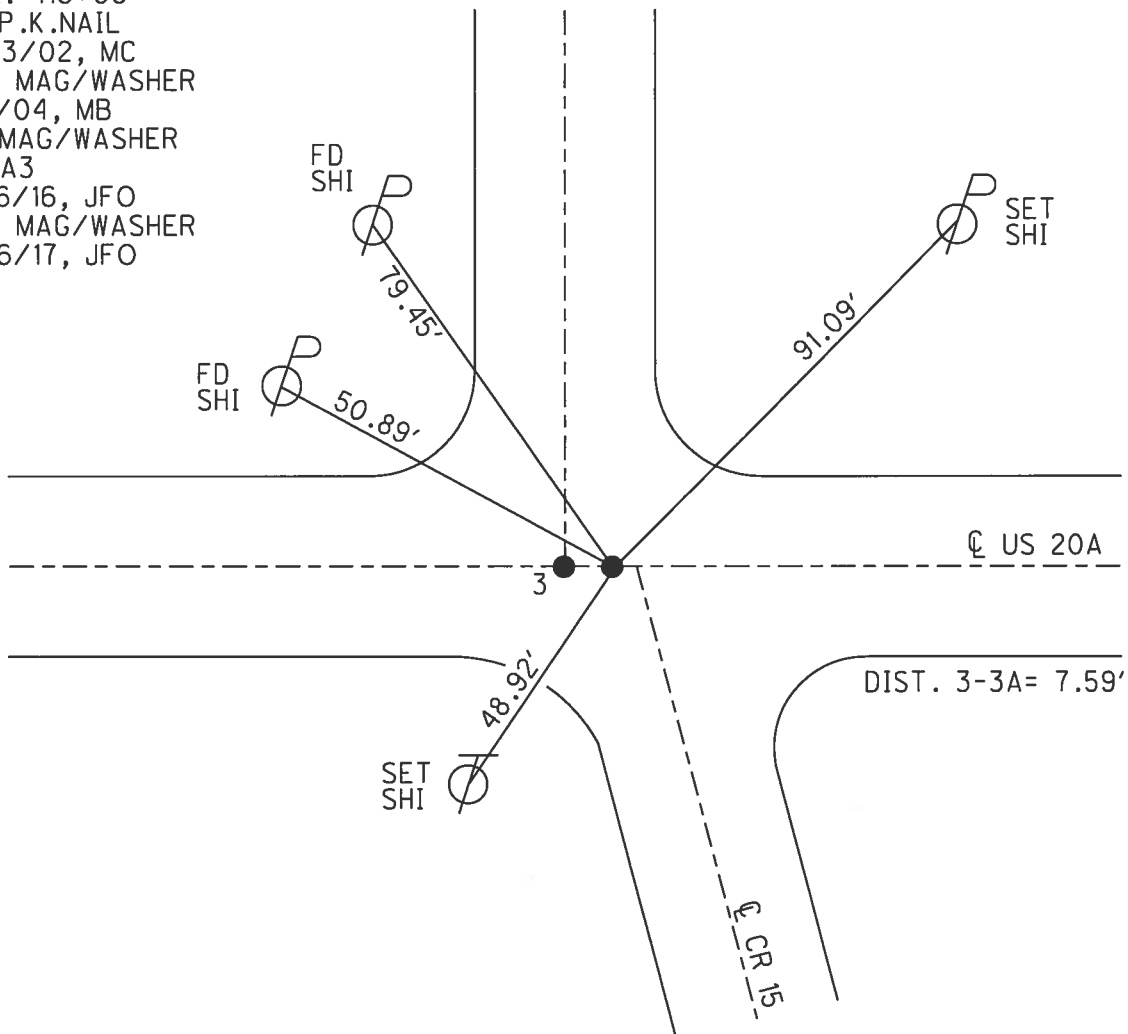
LEFT - ☉ PAV'T - RIGHT ON, 2' W OF ☉ S  
 \_\_\_\_\_ TO \_\_\_\_\_ EDGE PAVEMENT

S.L.M. 304+92.21

Grid: Northing: 705953.399 Easting: 1411467.159



RECORD: 1989SURV. CAP  
 STA. 416+08  
 FD P.K.NAIL  
 5/23/02, MC  
 SET MAG/WASHER  
 1/2/04, MB  
 FD MAG/WASHER  
 REFA3  
 5/16/16, JFO  
 SET MAG/WASHER  
 11/16/17, JFO



# O.D.O.T. DISTRICT 2 SURVEY OFFICE

PERSONNEL

REFERENCE NO. 3+3A

SHEET 2 OF 28

NOTES MALINSKY

H.C. CANTERBURY

R.C. BEAUMONT

DATE 5-23-02

WEATHER Sun

TEMP. +62°

ROUTE U.S. 20-A

COUNTY Williams

TOWNSHIP Jefferson

SECTION 5

T 7 N R 3 E

"A" - Fd P.K. NAIL @ Co. Rd 15 N.

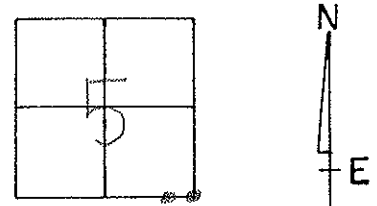
TYPE MONUMENT "B" - Fd P.K. NAIL 2' W of Co Rd 15 South

ON SURFACE - ~~BELOW~~ on surface

LEFT - ~~PAV'T.~~ PAV'T. - RIGHT PAV'T.

TO EDGE PAVEMENT

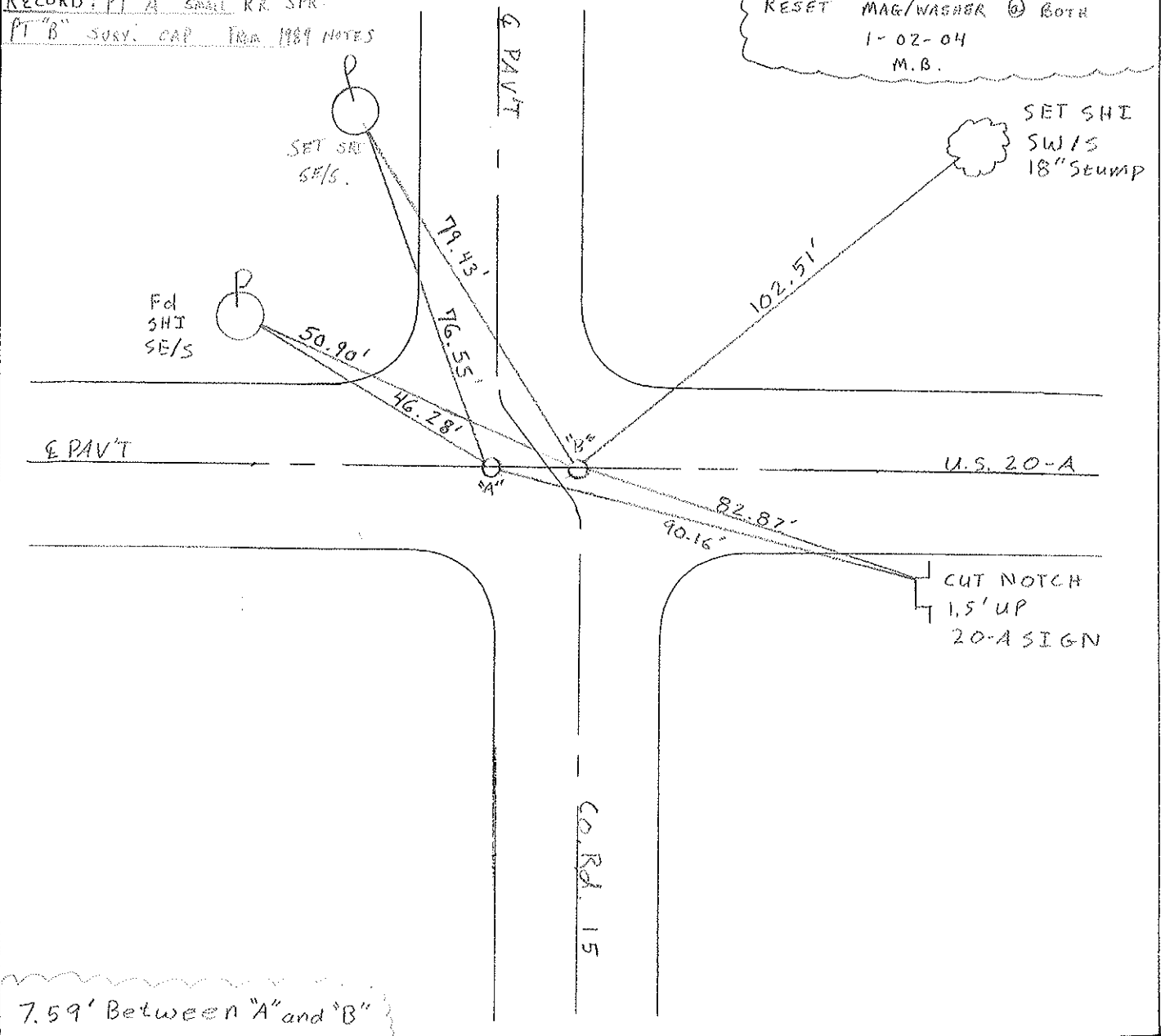
S.L.M. "A" 416+01 / "B" 416+08



RECORD: PT "A" SMALL RR. SPR.

PT "B" SURV. CAP FROM 1989 NOTES

RESET MAG/WASHER @ BOTH  
1-02-04  
M.B.



7.59' Between "A" and "B"