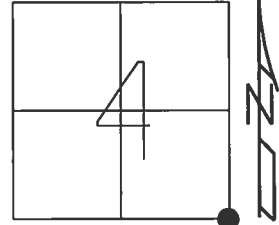


O.D.O.T. DISTRICT 2 SURVEY OFFICE (USE ONLY)

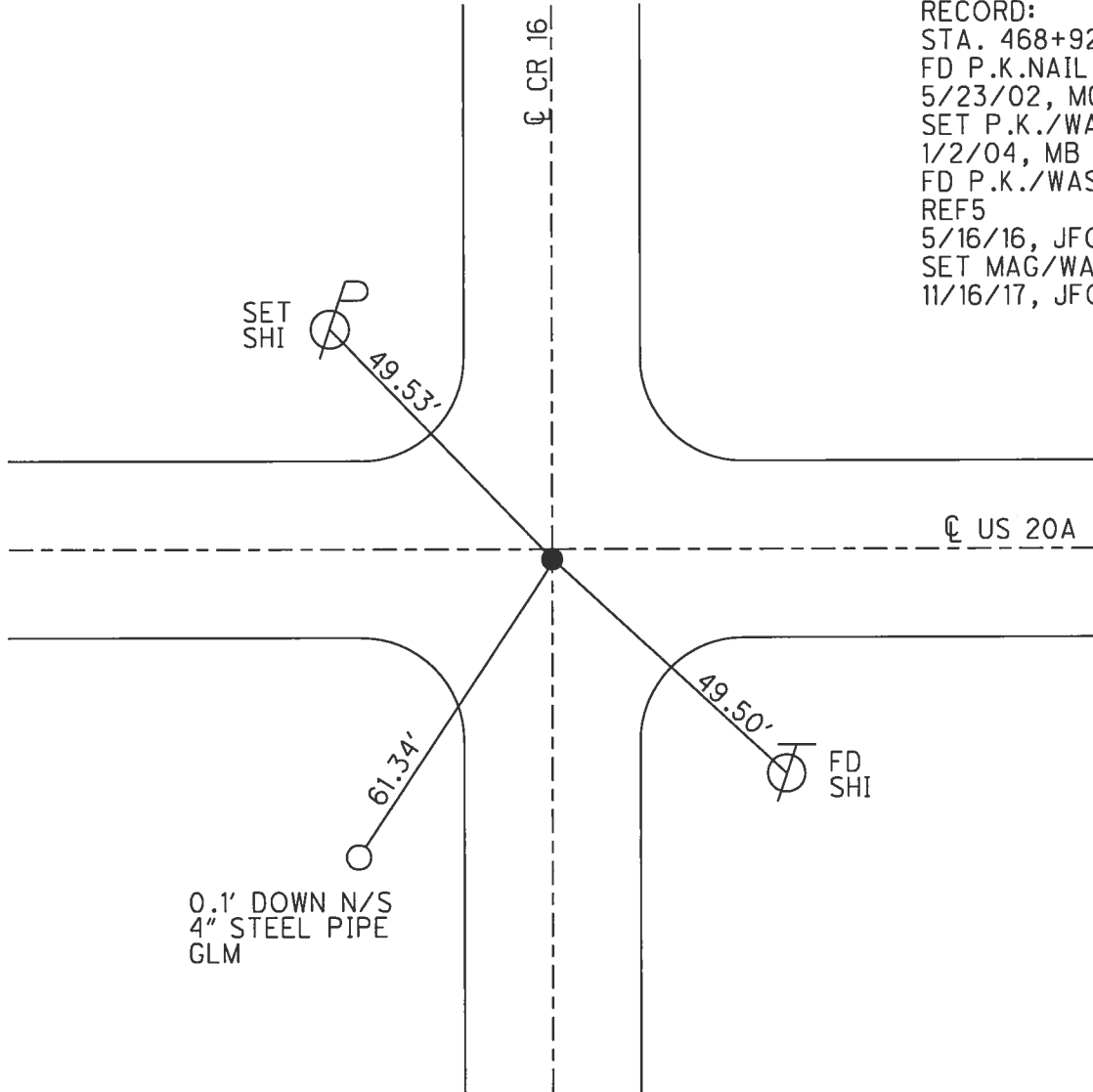
PERSONNEL \_\_\_\_\_ REFERENCE NO. 5 SHEET 6 OF 32  
 NOTES RHOADES DATE 4/13/17 ROUTE US 20 A  
 H.C. O'DONNELL WEATHER CLOUDY COUNTY WILLIAMS  
 R.C. HELDMAN TEMP. 49° TOWNSHIP JEFFERSON  
 \_\_\_\_\_ SECTION 4  
 \_\_\_\_\_ T 7 N R 3 E

TYPE MONUMENT P.K./WASHER  
 ON SURFACE - ~~BELOW~~ ON  
~~LEFT~~ - Q PAV'T - RIGHT 0.8'  
- TO - EDGE PAVEMENT  
 S.L.M. 357+76.23



Grid: Northing: 705827.205 Easting: 1416749.662

RECORD:  
 STA. 468+92  
 FD P.K.NAIL  
 5/23/02, MC  
 SET P.K./WASHER  
 1/2/04, MB  
 FD P.K./WASHER  
 REF5  
 5/16/16, JFO  
 SET MAG/WASHER  
 11/16/17, JFO



O.D.O.T. DISTRICT 2 SURVEY OFFICE

PERSONNEL \_\_\_\_\_

REFERENCE NO. 5

SHEET 4 OF 28

NOTES MALINSKY

H.C. CANTERBURY

DATE 5-23-02

ROUTE U.S. 20-A

R.C. BEUMONT

WEATHER sun

COUNTY Williams

TEMP. +62°

TOWNSHIP Jefferson

SECTION 4

T 2 N R 3 E

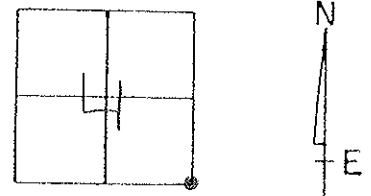
TYPE MONUMENT P.K. NAIL

ON SURFACE - ~~BELOW~~ on surface

~~LEFT~~ - PAV'T. - RIGHT 0.8' RT.

— TO — EDGE PAVEMENT ON ☉ BOTH

S.L.M. 468+92



Reset PK/washer  
9-24-02  
MB

