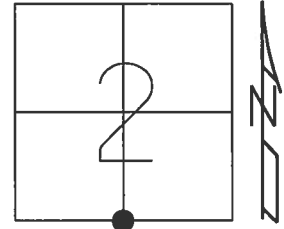


O.D.O.T. DISTRICT 2 SURVEY OFFICE (USE ONLY)

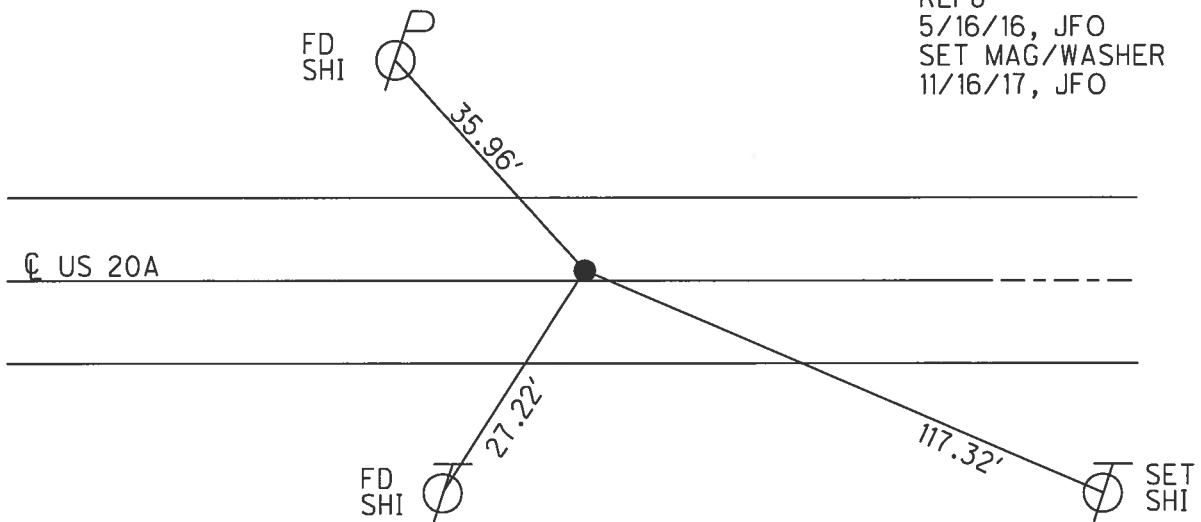
PERSONNEL \_\_\_\_\_ REFERENCE NO. 8 SHEET 9 OF 32  
 NOTES RHOADES DATE 4/17/17 ROUTE US 20 A  
 H.C. O'DONNELL WEATHER SUNNY COUNTY WILLIAMS  
 R.C. HELDMAN TEMP. 61° TOWNSHIP JEFFERSON  
 \_\_\_\_\_ SECTION 2  
 \_\_\_\_\_ T 7 N R 3 E

TYPE MONUMENT MAG/WASHER  
 ON SURFACE - ~~BELOW~~ ON \_\_\_\_\_  
 LEFT - ☉ PAV'T - ~~RIGHT~~ 1.9'  
8.5' TO LT EDGE PAVEMENT  
 S.L.M. 438+50.76



Grid: Northing: 705698.943 Easting: 1424822.750

RECORD:  
 P.K.NAIL ATOP  
 SM.R.R.SPIKE  
 STA. 549+69  
 FD P.K.NAIL  
 5/23/02, MC  
 SET MAG/WASHER  
 1/2/04, MB  
 FD MAG/WASHER  
 REF8  
 5/16/16, JFO  
 SET MAG/WASHER  
 11/16/17, JFO



O.D.O.T. DISTRICT 2 SURVEY OFFICE

PERSONNEL

REFERENCE NO. 8

SHEET 7 OF 28

NOTES MALINSKY

H.C. CANTERBURY

DATE 5-23-02

ROUTE U.S. 20-A

R.C. BEAUMONT

WEATHER SUN

COUNTY Williams

TEMP. +70°

TOWNSHIP Jefferson

SECTION 2

T. 7 N. R. 3 E

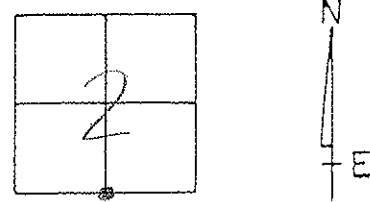
TYPE MONUMENT P.K. NAIL

ON SURFACE - ~~BELOW~~ on surface

LEFT - ~~C~~ PAV'T. - RIGHT 1.9' LT

8.5' TOLT EDGE PAVEMENT

S.L.M. 549+69



RECORD: P.K. NAIL ATOP Sm. R.R. SPK.

RESET MAG/WASHER  
1-02-04  
M.B.

