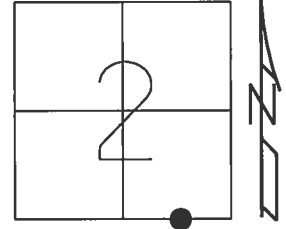


O.D.O.T. DISTRICT 2 SURVEY OFFICE (USE ONLY)

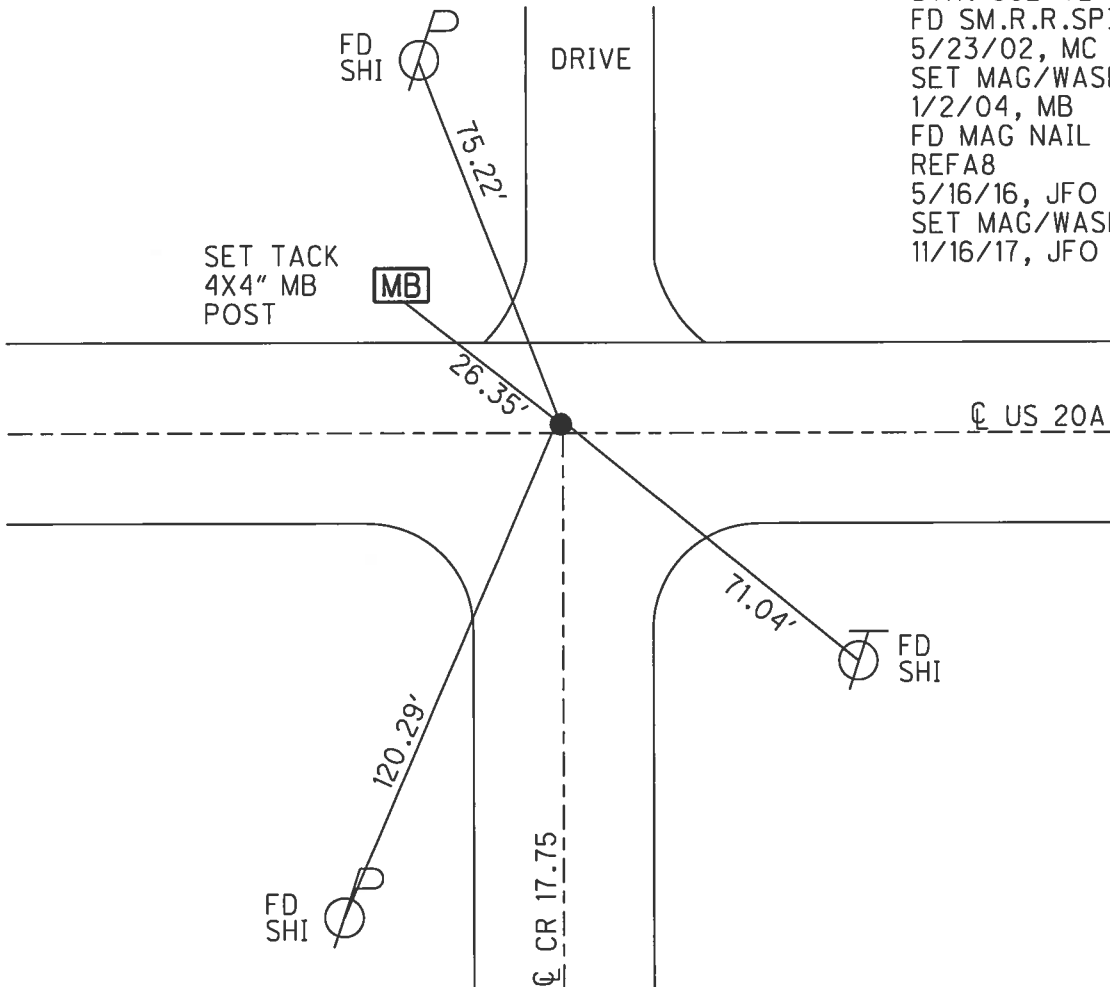
PERSONNEL \_\_\_\_\_ REFERENCE NO. 8 A SHEET 10 OF 32  
 NOTES RHOADES DATE 4/13/17 ROUTE US 20 A  
 H.C. O'DONNELL WEATHER CLOUDY COUNTY WILLIAMS  
 R.C. HELDMAN TEMP. 52° TOWNSHIP JEFFERSON  
 SECTION 2  
 T 7 N R 3 E

TYPE MONUMENT MAG NAIL  
 ON SURFACE - ~~BELOW~~ ON \_\_\_\_\_  
 LEFT - ☉ PAV'T - ~~RIGHT~~ 0.8'  
10.8' TO LT EDGE PAVEMENT  
 S.L.M. 451+53.93

Grid: Northing: 705654.401 Easting: 1426125.163



RECORD:  
 SM.R.R.SPIKE  
 1" IPIPE  
 STA. 562+72  
 FD SM.R.R.SPIKE  
 5/23/02, MC  
 SET MAG/WASHER  
 1/2/04, MB  
 FD MAG NAIL  
 REFA8  
 5/16/16, JFO  
 SET MAG/WASHER  
 11/16/17, JFO



# O.D.O.T. DISTRICT 2 SURVEY OFFICE

PERSONNEL

REFERENCE NO. 8-4

SHEET 8 OF 28

NOTES MALINSKY

H.C. CANTERBURY

DATE 5-23-02

ROUTE U.S. 20-A

R.C. BEAUMONT

WEATHER SUN

COUNTY Williams

TEMP. +70°

TOWNSHIP Jefferson

SECTION 2

T 7 N R 3 E

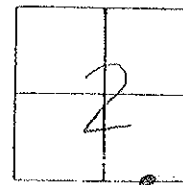
TYPE MONUMENT 5m RR, SpK

ON SURFACE - ~~BELOW~~ on surface

~~LEFT - & PAV'T. - RIGHT~~ ON &

10.8' TO LT EDGE PAVEMENT

S.L.M. 562 + 72



RECORD: Sm. R.R. SPK. ATOP 1" IRON PIPE

RESET MAR/WASHER  
1-02-04  
M.B.

