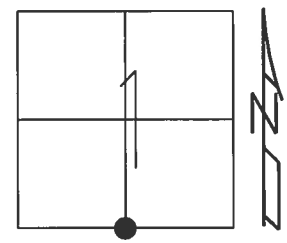


O.D.O.T. DISTRICT 2 SURVEY OFFICE (USE ONLY)

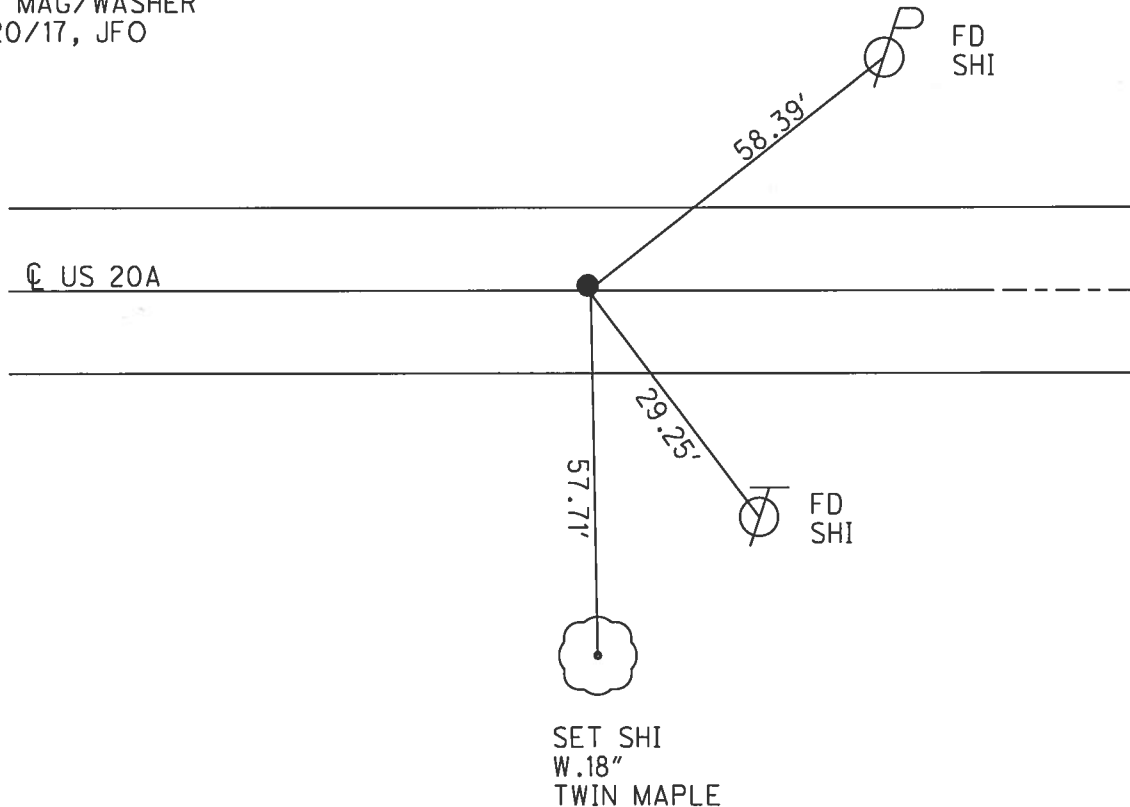
PERSONNEL _____ REFERENCE NO. 10 SHEET 12 OF 32
 NOTES RHOADES DATE 4/17/17 ROUTE US 20 A
 H.C. O'DONNELL WEATHER SUNNY COUNTY WILLIAMS
 R.C. HELDMAN TEMP. 61° TOWNSHIP JEFFERSON
 SECTION 1
 T 7 N R 3 E

TYPE MONUMENT P.K./WASHER
 ON SURFACE - ~~BELOW~~ ON _____
 LEFT - ☉ PAV'T - ~~RIGHT~~ 0.6'
9.2' TO LT EDGE PAVEMENT
 S.L.M. 490+72.71



Grid: Northing: 705535.098 Easting: 1430042.106

RECORD:
 STA. 601+95
 FD P.K./WASHER
 5/24/02, MC
 SET MAG/WASHER
 9/24/02, MB
 FD P.K./WASHER
 REF10
 5/16/16, JFO
 SET MAG/WASHER
 11/20/17, JFO



O.D.O.T. DISTRICT 2 SURVEY OFFICE

PERSONNEL

REFERENCE NO. 10

SHEET 10 OF 28

NOTES Moser

H.C. Moser

R.C. Homan

DATE 5-24-02

WEATHER Cloudy

TEMP. +65°

ROUTE U.S. 20-A

COUNTY Williams

TOWNSHIP Jefferson

SECTION 1

T. 7 N. R. 3 E

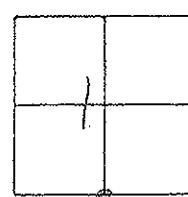
TYPE MONUMENT P.K. NAIL / WASHER

ON SURFACE - ~~BELOW~~ on surface

LEFT - ~~C~~ PAV'T - RIGHT 0.6' LT.

9.2' TO LT. EDGE PAVEMENT

S.L.M. 601+95



Reset PK/washer
9-24-02
MB

