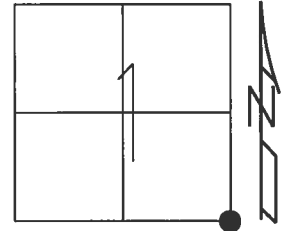


O.D.O.T. DISTRICT 2 SURVEY OFFICE (USE ONLY)

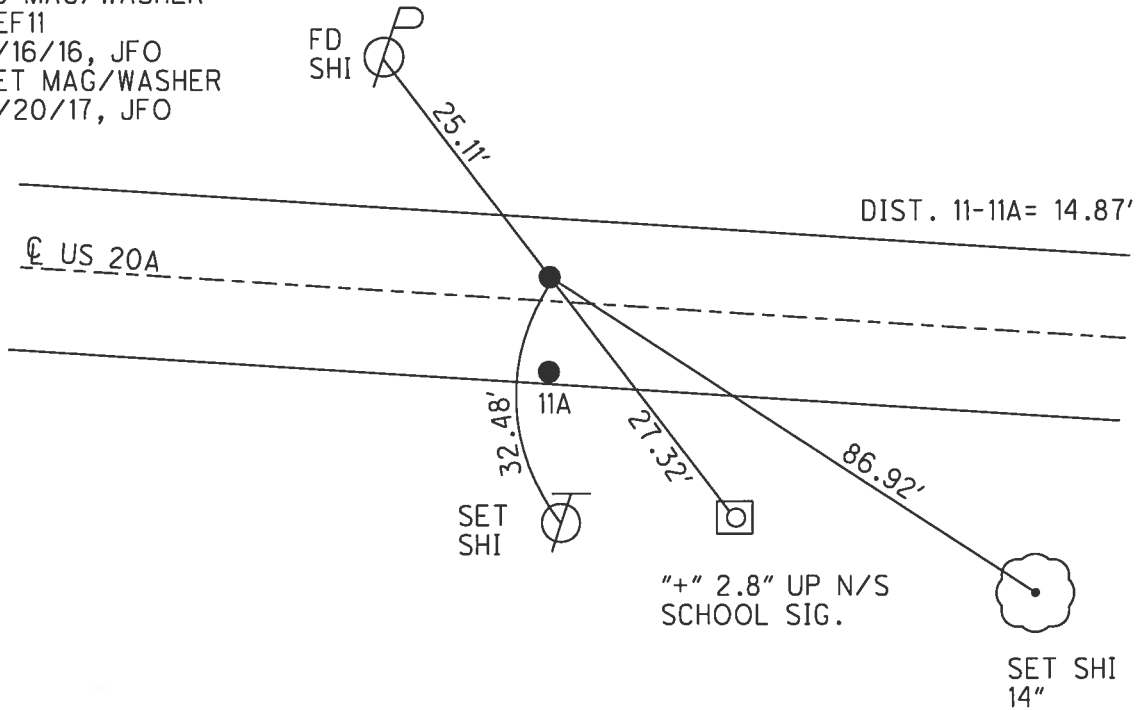
PERSONNEL _____ REFERENCE NO. 11 SHEET 13 OF 32
 NOTES RHOADES DATE 4/17/17 ROUTE US 20 A
 H.C. O'DONNELL WEATHER SUNNY COUNTY WILLIAMS
 R.C. HELDMAN TEMP. 61° TOWNSHIP JEFFERSON
 SECTION 1
 T 7 N R 4 E

TYPE MONUMENT MAG/WASHER
 ON SURFACE - ~~BELOW~~ ON
 LEFT - ☉ PAV'T - ~~RIGHT~~ 4.3'
6' TO LT EDGE PAVEMENT
 S.L.M. 516+91.65
 Grid: Northing: 705448.851 Easting: 1432659.626



RECORD:
 R.R.SPIKE
 STA. 628+13
 FD P.K.NAIL
 5/24/02, MC
 SET MAG/WASHER
 1/2/04, MB
 FD MAG/WASHER
 REF11
 5/16/16, JFO
 SET MAG/WASHER
 11/20/17, JFO

NOTE:
 JEFFERSON TWP E/LINE
 BRADY TWP W/LINE



O.D.O.T. DISTRICT 2 SURVEY OFFICE

PERSONNEL

REFERENCE NO. 11

SHEET 11 OF 28

NOTES Moser

H.C. Moser

R.C. Homen

DATE 5-24-02

WEATHER cloudy

TEMP. +65°

ROUTE U.S. 20-A

COUNTY Williams

TOWNSHIP Jefferson

SECTION 1

T 7 N R 3 E

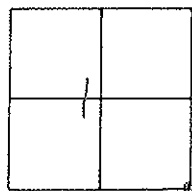
TYPE MONUMENT P.K. NAILS/WASHERS ATOP R.R. SPKS.

ON SURFACE - ~~BELOW~~ on surface

LEFT- & PAV'T. - RIGHT

___ TO ___ EDGE PAVEMENT

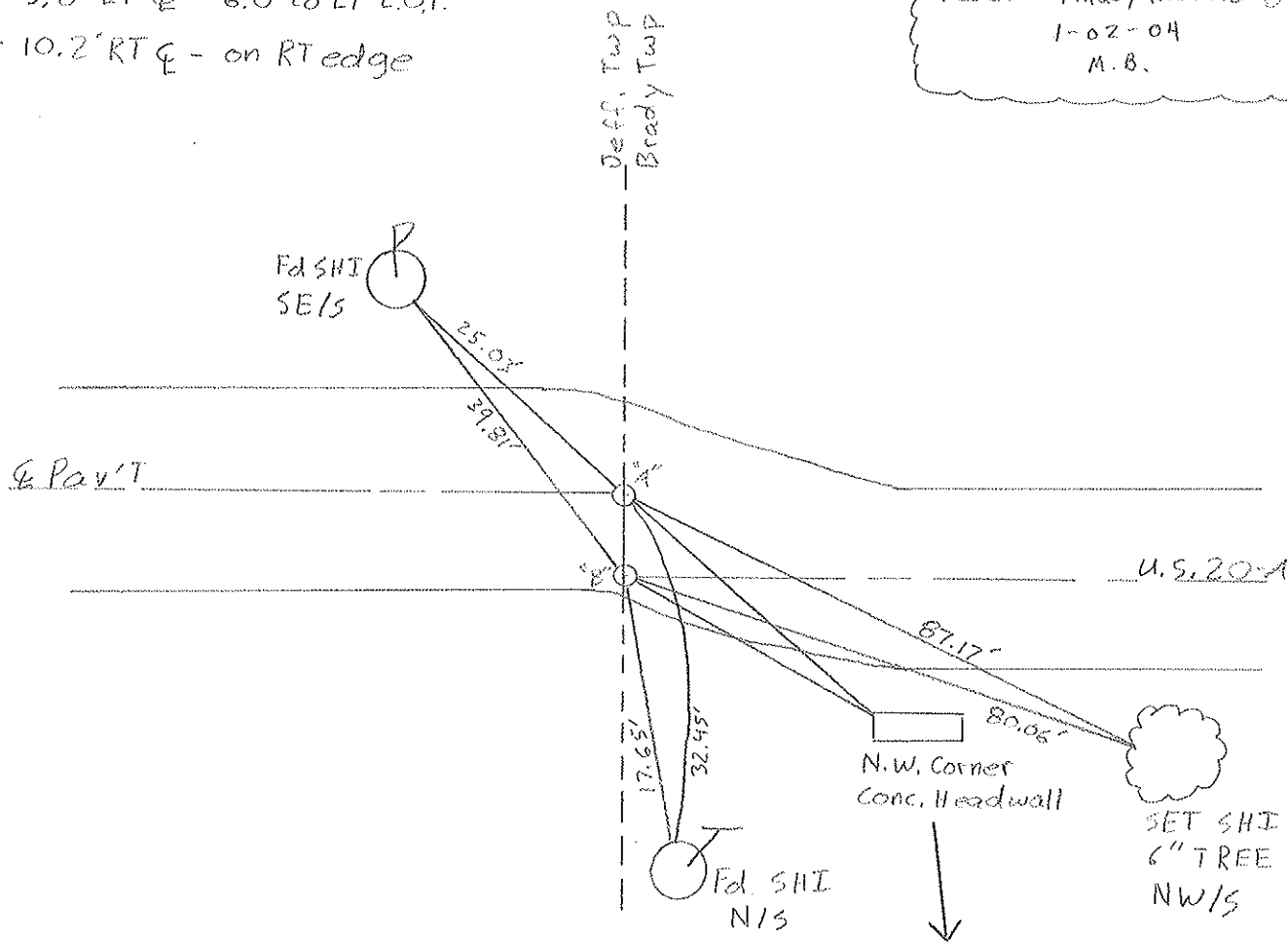
S.L.M. 628+13



"A" - 3.8' LT & - 6.0' to LT E.O.P.

"B" - 10.2' RT & - on RT edge

RESET MAGS/WASHERS @ Both
1-02-04
M.B.



14.80' Between "A" + "B"

60.55' (Rec) Headwall to "A"
54.68' (Rec) Headwall to "B"