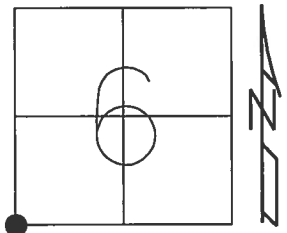


O.D.O.T. DISTRICT 2 SURVEY OFFICE (USE ONLY)

PERSONNEL \_\_\_\_\_ REFERENCE NO. 11 A SHEET 14 OF 32

NOTES RHOADES DATE 4/17/17 ROUTE US 20 A  
 H.C. O'DONNELL WEATHER SUNNY COUNTY WILLIAMS  
 R.C. HELDMAN TEMP. 61° TOWNSHIP BRADY  
 \_\_\_\_\_ SECTION 6  
 \_\_\_\_\_ T 7 N R 4 E

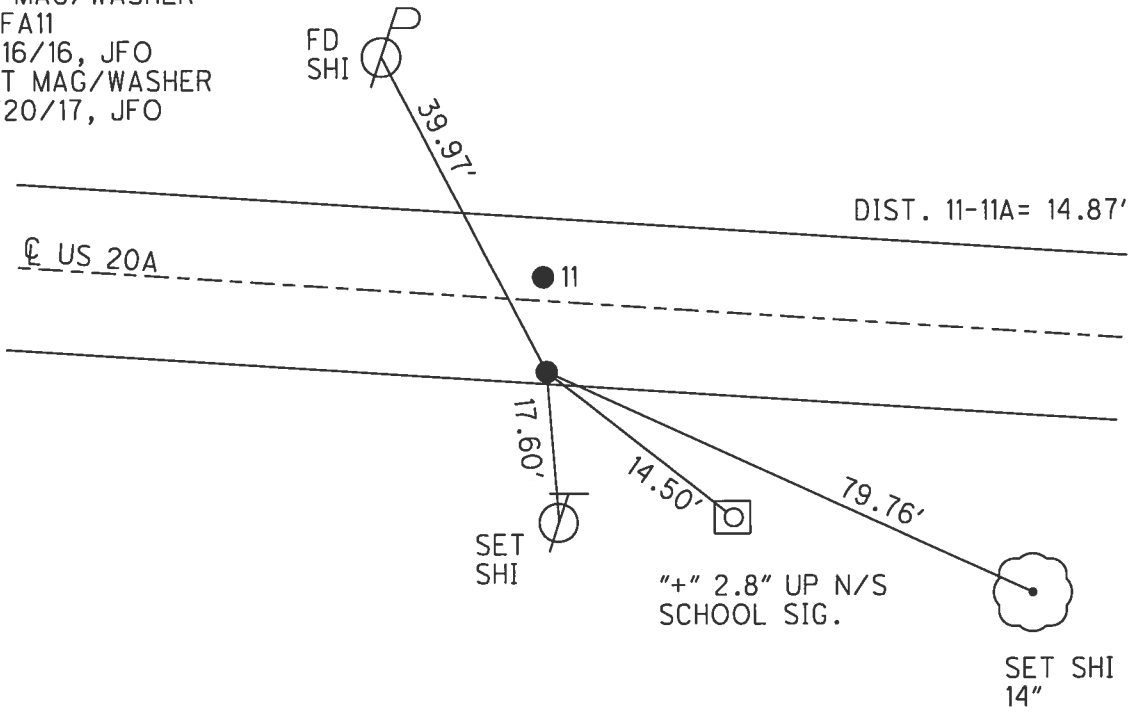
TYPE MONUMENT MAG/WASHER  
 ON SURFACE - ~~BELOW~~ ON \_\_\_\_\_  
~~LEFT~~ - ☉ PAV'T - RIGHT 10.5'  
0.7' TO RT EDGE PAVEMENT  
 S.L.M. 517+06.52



Grid: Northing: 705433.983 Easting: 1432659.965

RECORD:  
 R.R.SPIKE  
 STA. 628+13  
 FD P.K.NAIL  
 5/24/02, MC  
 SET MAG/WASHER  
 1/2/04, MB  
 FD MAG/WASHER  
 REFA11  
 5/16/16, JFO  
 SET MAG/WASHER  
 11/20/17, JFO

NOTE:  
 JEFFERSON TWP E/LINE  
 BRADY TWP W/LINE



# O.D.O.T. DISTRICT 2 SURVEY OFFICE

PERSONNEL

REFERENCE NO. 11

SHEET 11 OF 28

NOTES Moser

H.C. Moser

R.C. Homen

DATE 5-24-02

WEATHER cloudy

TEMP. +65°

ROUTE U.S. 20-A

COUNTY Williams

TOWNSHIP Jefferson

SECTION 1

T 7 N R 3 E

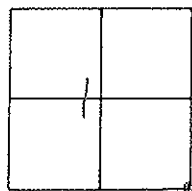
TYPE MONUMENT P.K. NAILS/WASHERS ATOP R.R. SPTS.

ON SURFACE - BELOW on surface

LEFT - ☉ PAV'T. - RIGHT

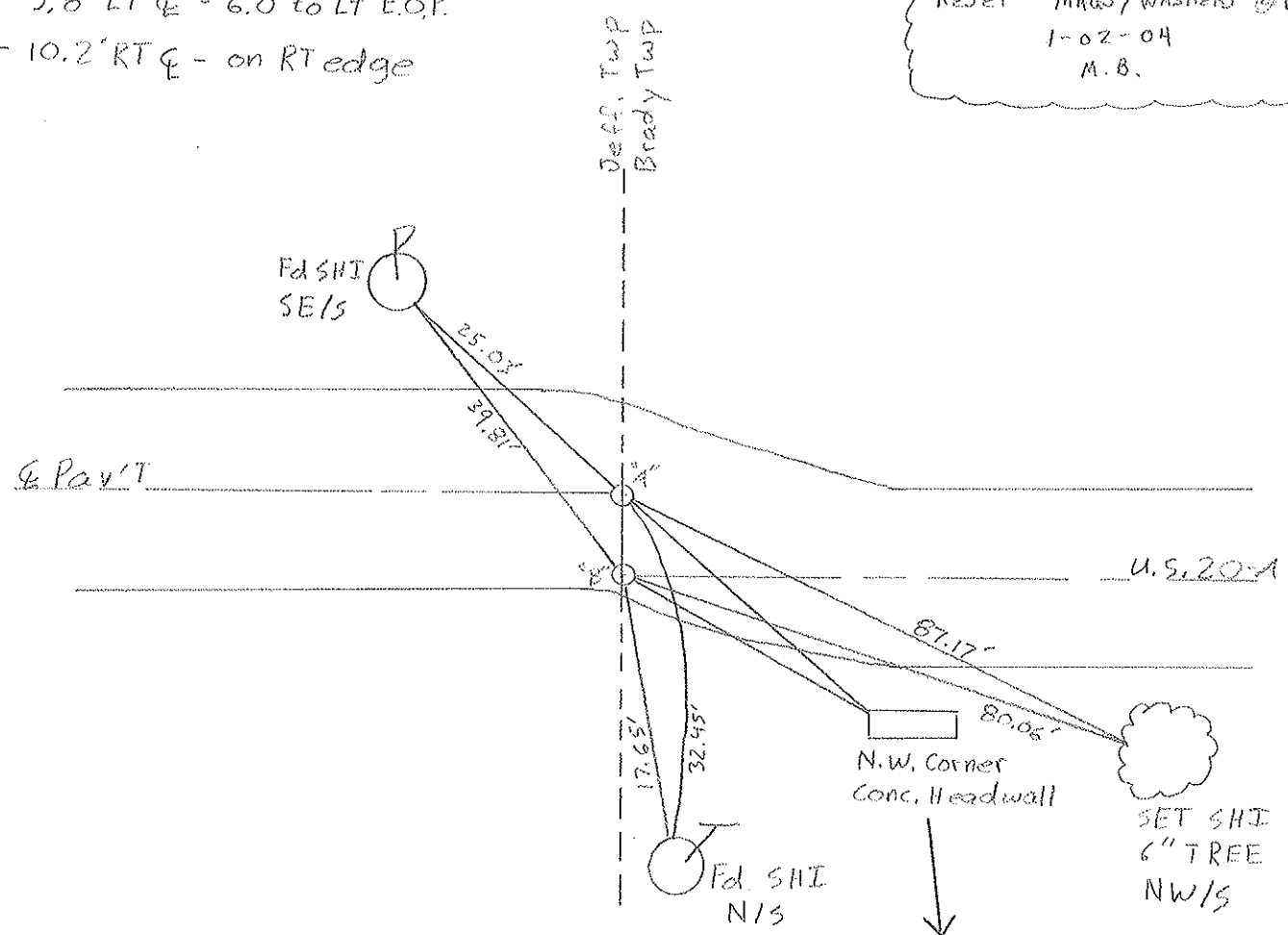
     TO      EDGE PAVEMENT

S.L.M. 628+13



"A" - 3.8' LT ☉ - 6.0' to LT E.O.P.  
 "B" - 10.2' RT ☉ - on RT edge

RESET MAGS/WASHERS @ Both  
 1-02-04  
 M.B.



14.80' Between "A" + "B"

60.55' (Rec) Headwall to "A"  
 54.68' (Rec) Headwall to "B"