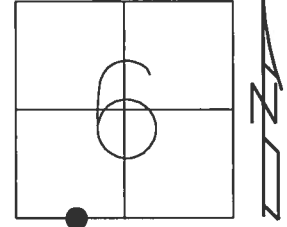


O.D.O.T. DISTRICT 2 SURVEY OFFICE (USE ONLY)

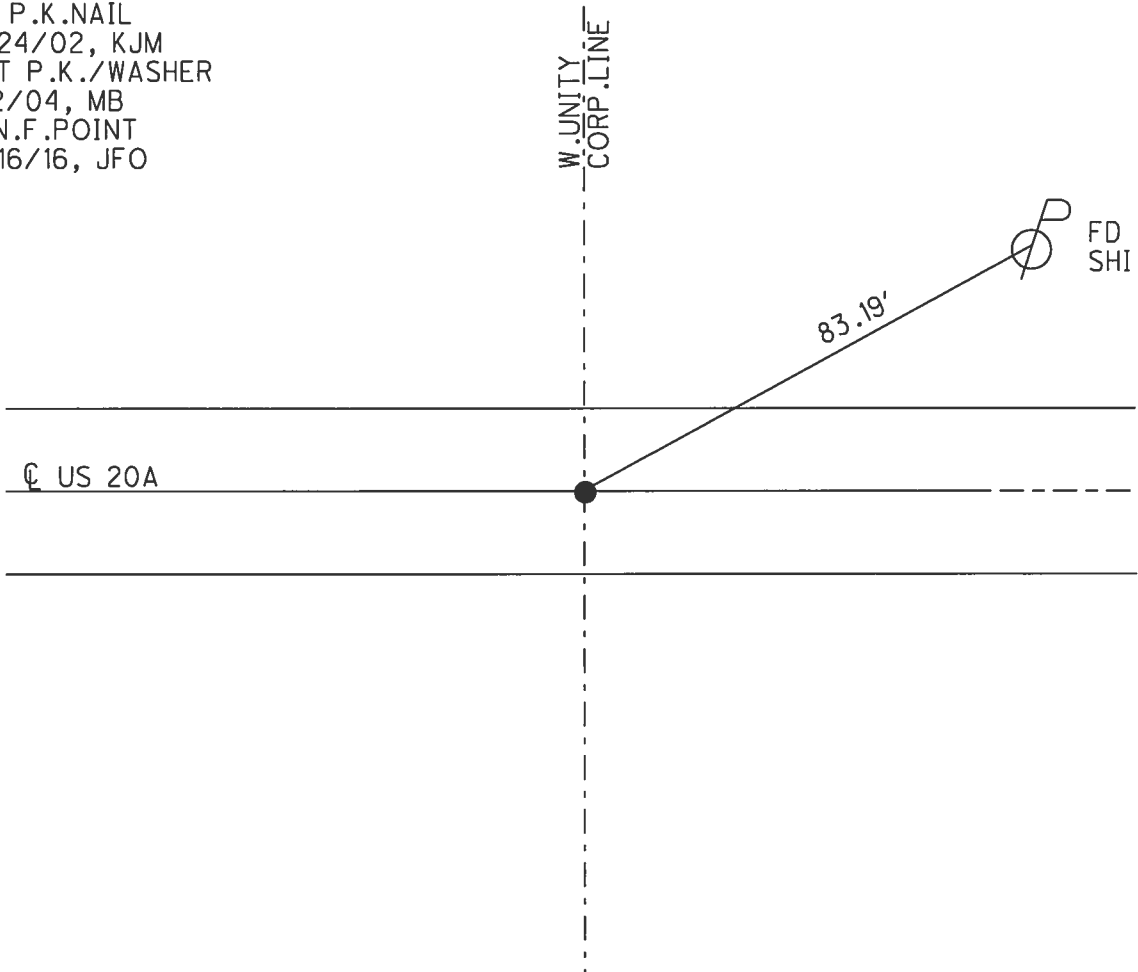
PERSONNEL \_\_\_\_\_ REFERENCE NO. 12 SHEET 15 OF 32

NOTES MOSER DATE 5/24/02 ROUTE US 20 A  
 H.C. MOSER WEATHER CLOUDY COUNTY WILLIAMS  
 R.C. HOMAN TEMP. 65° TOWNSHIP BRADY  
 \_\_\_\_\_ SECTION 6  
 \_\_\_\_\_ T 7 N R 4 E

TYPE MONUMENT P.K.NAIL  
 ON SURFACE - ~~BELOW~~ ON  
 LEFT - ☉ PAV'T - RIGHT ON  
9.8' TO RT EDGE PAVEMENT  
 S.L.M. 644+05 (REC)  
 Grid: Northing: - Easting: -



RECORD:  
 STA. 644+05  
 FD P.K.NAIL  
 5/24/02, KJM  
 SET P.K./WASHER  
 1/2/04, MB  
 D.N.F.POINT  
 5/16/16, JFO



# O.D.O.T. DISTRICT 2 SURVEY OFFICE

PERSONNEL

REFERENCE NO. 12

SHEET 12 OF 28

NOTES Moser

H.C. Moser

R.C. Homan

DATE 5-24-02

WEATHER Cloudy

TEMP. +65°

ROUTE U.S. 20-A

COUNTY Williams

TOWNSHIP Brady

SECTION 6

T. 7 N. R. 4 E.

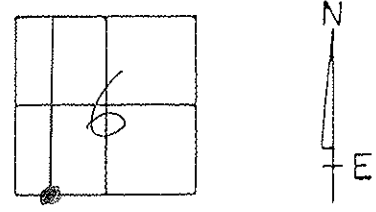
TYPE MONUMENT P.K. NAIL

ON SURFACE - ~~BELOW~~ on surface

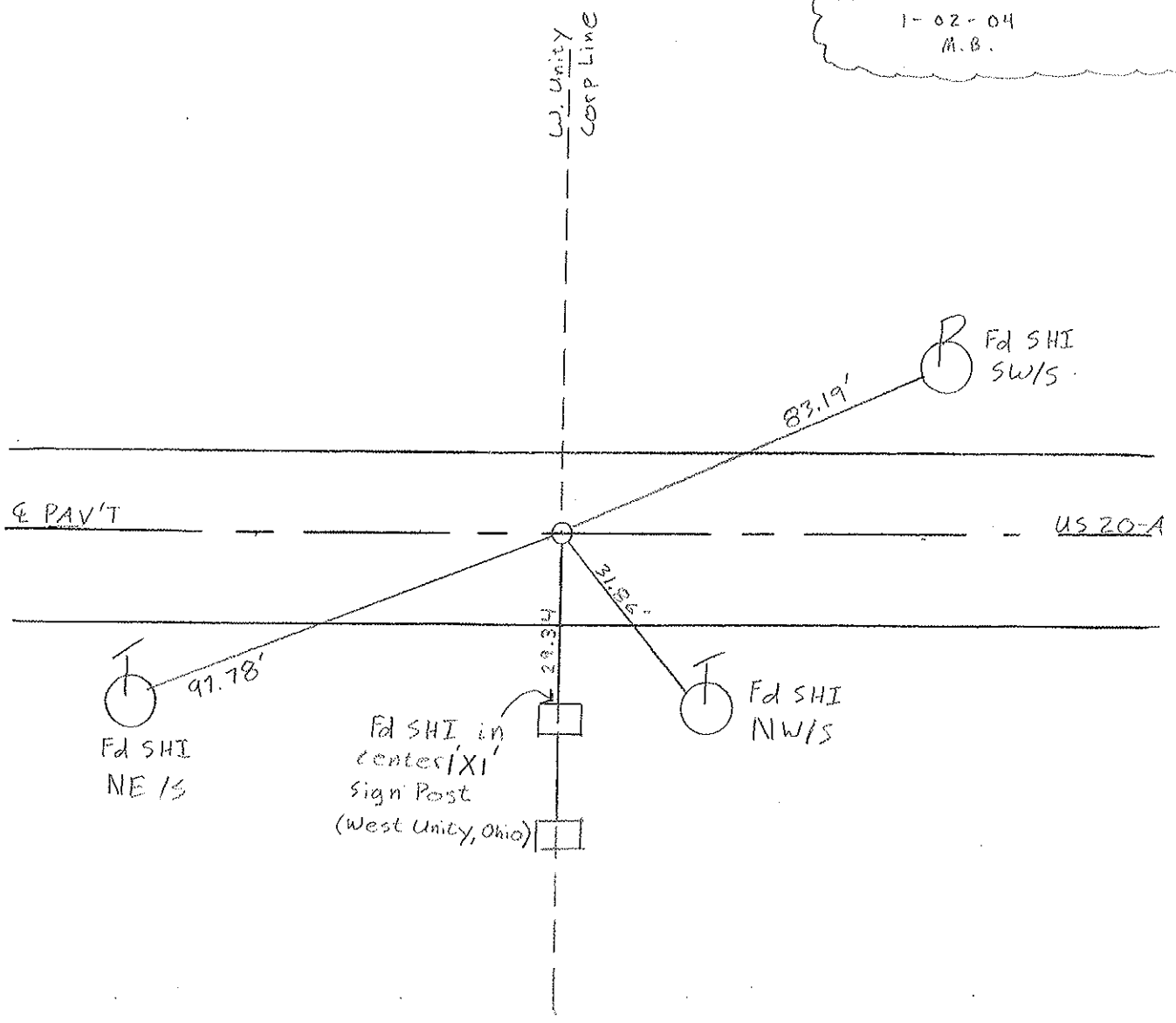
LEFT - & PAV'T. - RIGHT ON &

9.8' TO RT. EDGE PAVEMENT

S.L.M. 644+05



RESET P.K./WASHER  
1-02-04  
M.B.



Fd SHI in center of sign post  
(West Unity, Ohio)