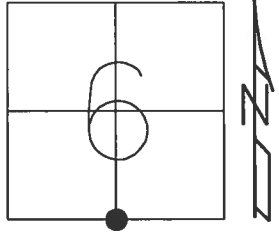


O.D.O.T. DISTRICT 2 SURVEY OFFICE (USE ONLY)

PERSONNEL \_\_\_\_\_ REFERENCE NO. 13 SHEET 16 OF 32

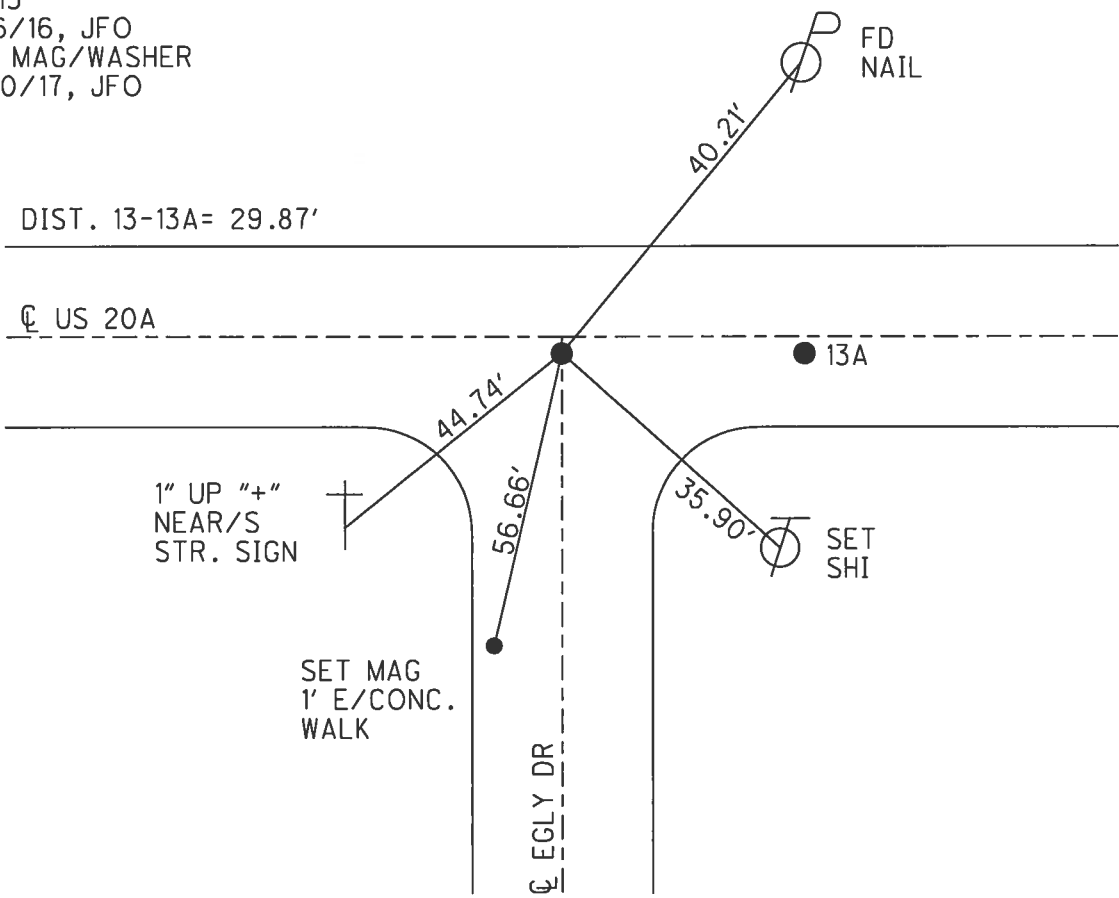
NOTES	<u>RHOADES</u>	DATE	<u>4/17/17</u>	ROUTE	<u>US 20 A</u>
H.C.	<u>O'DONNELL</u>	WEATHER	<u>SUNNY</u>	COUNTY	<u>WILLIAMS</u>
R.C.	<u>HELDMAN</u>	TEMP.	<u>65°</u>	TOWNSHIP	<u>BRADY</u>
				SECTION	<u>6</u>
				T	<u>7 N</u>
				R	<u>4 E</u>

TYPE MONUMENT MAG/WASHER  
 ON SURFACE - ~~BELOW~~ ON \_\_\_\_\_  
~~LEFT~~ - CL PAV'T - RIGHT 1'  
11.3' TO LT EDGE PAVEMENT  
 S.L.M. 544+25.01



Grid: Northing: 705387.645 Easting: 1435378.062

RECORD:  
 STA. 655+35  
 FD P.K.NAIL  
 5/24/02, MC  
 SET MAG/WASHER  
 1/2/04, MB  
 FD MAG/WASHER  
 REF13  
 5/16/16, JFO  
 SET MAG/WASHER  
 11/20/17, JFO



# O.D.O.T. DISTRICT 2 SURVEY OFFICE

PERSONNEL

REFERENCE NO. 13

SHEET 13 OF 28

NOTES Moser

H.C. Moser

R.C. Homan

DATE 5-24-02

WEATHER cloudy

TEMP. +65°

ROUTE U.S. 20-A

COUNTY Williams

TOWNSHIP Brady

SECTION 6

T. 7 N. R. 4 E.

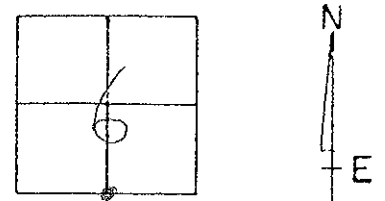
TYPE MONUMENT P.K. NAILS A, B + C

ON SURFACE - ~~BELOW~~ A, B + C on surface

LEFT - ~~C~~ PAV'T. - RIGHT 1' RT OF C PAV'T

11.3' TO LT. EDGE PAVEMENT 1 & B

S.L.M. "A"-655+35 / "B"-655+65



30.06' Between "A" + "B"

150.02' (Rec) Between "B" + "C"

RESET MAGS/WASHERS

1-02-04

M.B.

