

O.D.O.T. DISTRICT 2 SURVEY OFFICE (USE ONLY)

PERSONNEL _____ REFERENCE NO. 14 SHEET 18 OF 32

NOTES RHOADES DATE 4/17/17 ROUTE US 20 A

H.C. O'DONNELL WEATHER SUNNY COUNTY WILLIAMS

R.C. HELDMAN TEMP. 65° TOWNSHIP BRADY

SECTION 6

T 7 N R 4 E

TYPE MONUMENT MAG/WASHER

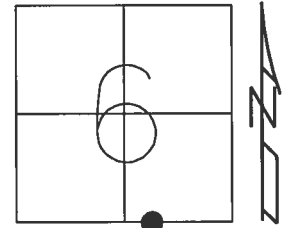
ON SURFACE - ~~BELOW~~ ON

~~LEFT~~ - CL PAV'T - RIGHT 0.8'

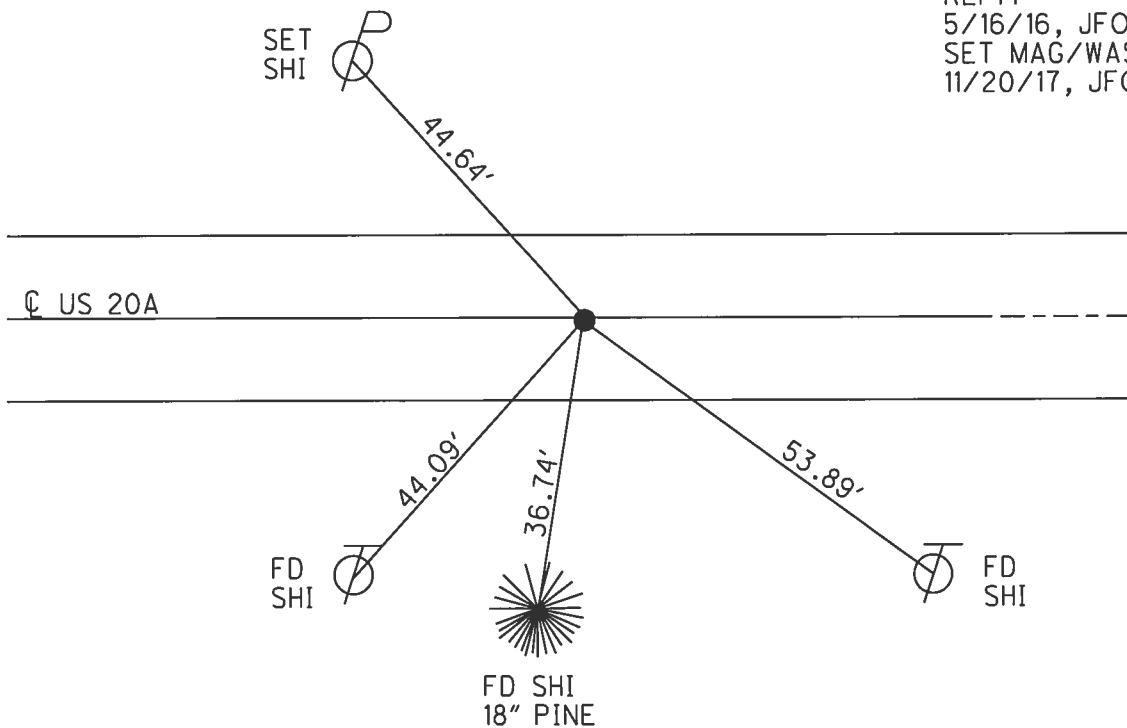
10' TO RT EDGE PAVEMENT

S.L.M. 546+05.03

Grid: Northing: 705384.654 Easting: 1435558.062



RECORD:
 STA. 657+03
 FD P.K.NAIL
 5/18/02, MB
 SET MAG/WASHER
 1/2/04, MB
 FD MAG/WASHER
 REF14
 5/16/16, JFO
 SET MAG/WASHER
 11/20/17, JFO



O.D.O.T. DISTRICT 2 SURVEY OFFICE

PERSONNEL

REFERENCE NO. 14

SHEET 14 OF 28

NOTES BARNHISEL

H.C. Moser

DATE 5-18-02

ROUTE U.S. 20-A

R.C. Barnhisel

WEATHER Cloudy

COUNTY Williams

TEMP. +50°

TOWNSHIP Brady

SECTION 6

T 7 N R 4 E

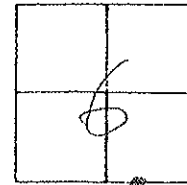
TYPE MONUMENT P.K. NAIL

ON SURFACE - ~~BELOW~~ on surface

LEFT - ~~C~~ PAV'T. - RIGHT 0.8' AT

10.0' TO RT. EDGE PAVEMENT

S.L.M. 657+03



RESET MAG/WASHER
 1-02-04
 M.B.

