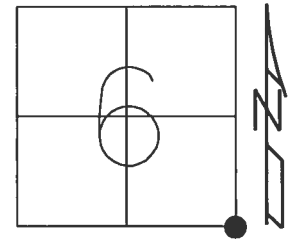


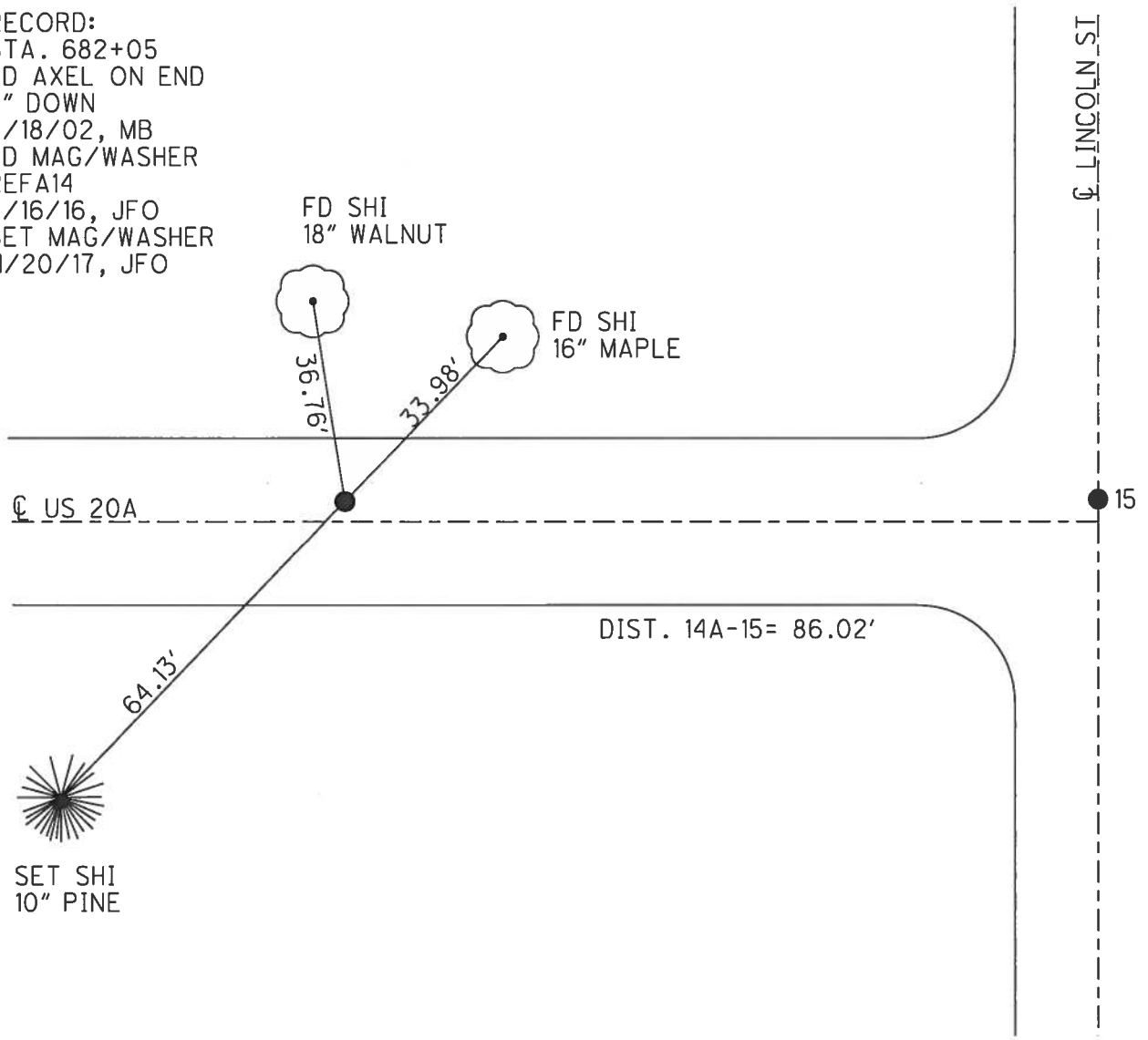
O.D.O.T. DISTRICT 2 SURVEY OFFICE (USE ONLY)

PERSONNEL _____ REFERENCE NO. 14 A SHEET 19 OF 32
 NOTES RHOADES DATE 4/17/17 ROUTE US 20 A
 H.C. O'DONNELL WEATHER SUNNY COUNTY WILLIAMS
 R.C. HELDMAN TEMP. 65° TOWNSHIP BRADY
 _____ SECTION 6
 _____ T 7 N R 4 E

TYPE MONUMENT MAG/WASHER
 ON SURFACE - ~~BELOW~~ ON _____
 LEFT - ☉ PAV'T - ~~RIGHT~~ 2'
12.2' TO LT EDGE PAVEMENT
 S.L.M. 570+99.12
 Grid: Northing: 705343.201 Easting: 1438051.799



RECORD:
 STA. 682+05
 FD AXEL ON END
 5" DOWN
 5/18/02, MB
 FD MAG/WASHER
 REFA14
 5/16/16, JFO
 SET MAG/WASHER
 11/20/17, JFO



O.D.O.T. DISTRICT 2 SURVEY OFFICE

PERSONNEL

REFERENCE NO. 14A

SHEET 15 OF 28

NOTES Moser

H.C. Moser

R.C. Homan

DATE 5-18-02

WEATHER Cloudy

TEMP. +50°

ROUTE U.S. 20-A

COUNTY Williams

TOWNSHIP Brady

SECTION 5

T. 7 N. R. 4 E.

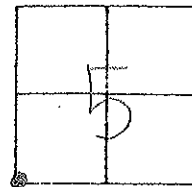
TYPE MONUMENT Axle on end

ON SURFACE - BELOW 5"

LEFT - ~~C~~ PAV'T. - RIGHT 2.3'

12.2 TO LT. EDGE PAVEMENT

S.L.M. 682105



NOTE: DID NOT HAVE THIS POINT IN NOTES. AERIAL TARGET WAS PAINTED AROUND IT

MB

