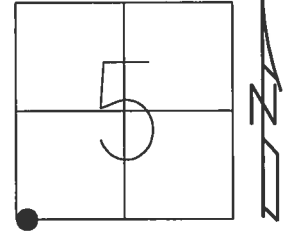


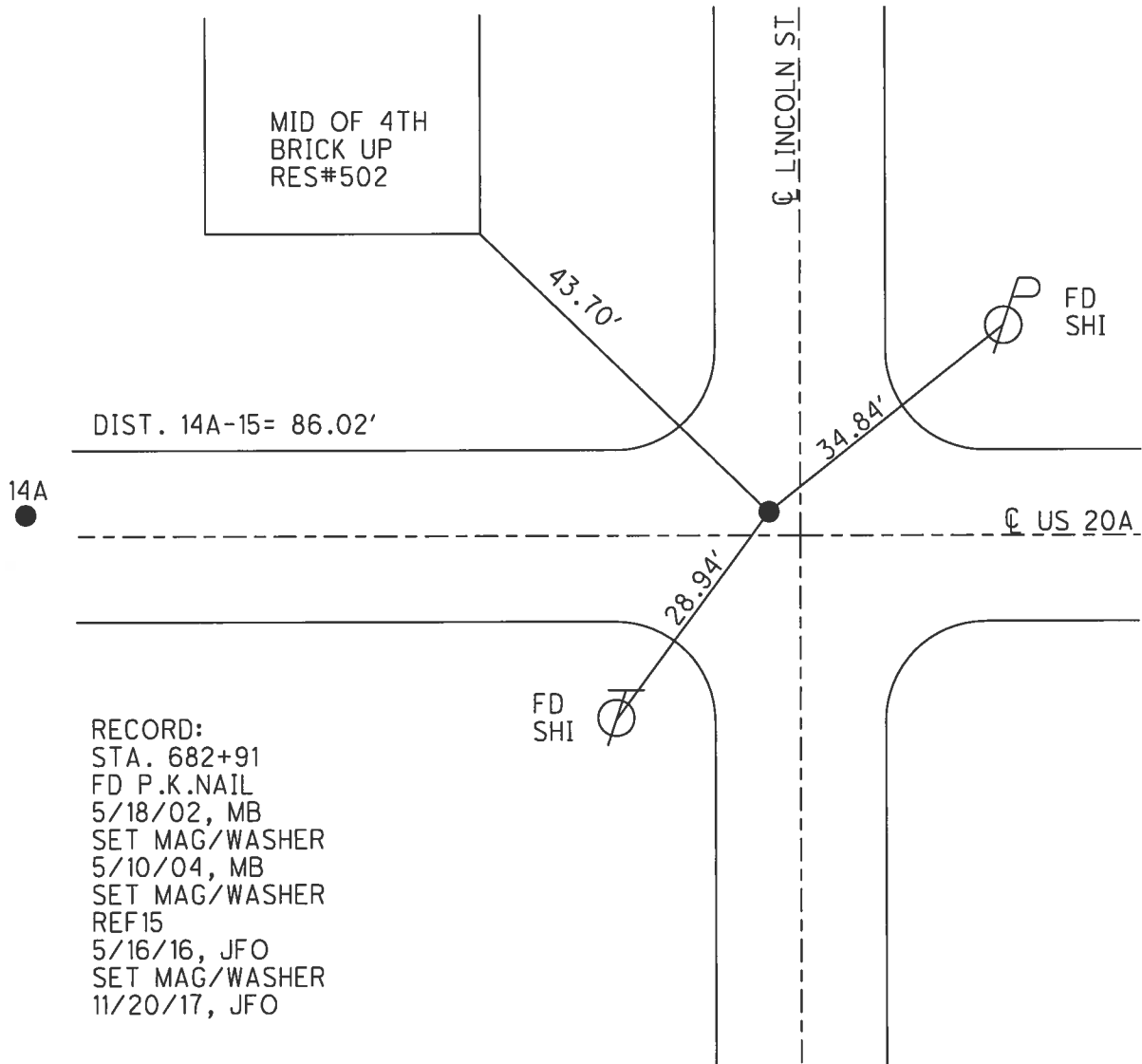
O.D.O.T. DISTRICT 2 SURVEY OFFICE (USE ONLY)

PERSONNEL _____ REFERENCE NO. 15 SHEET 20 OF 32
 NOTES RHOADES DATE 4/17/17 ROUTE US 20 A
 H.C. O'DONNELL WEATHER SUNNY COUNTY WILLIAMS
 R.C. HELDMAN TEMP. 65° TOWNSHIP BRADY
 SECTION 5
 T 7 N R 4 E

TYPE MONUMENT MAG/WASHER
 ON SURFACE - ~~BELOW~~ ON _____
 LEFT - ☉ PAV'T - ~~RIGHT~~ 1.9'
 - TO - EDGE PAVEMENT
 S.L.M. 571+85.08



Grid: Northing: 705341.244 Easting: 1438137.732



RECORD:
 STA. 682+91
 FD P.K.NAIL
 5/18/02, MB
 SET MAG/WASHER
 5/10/04, MB
 SET MAG/WASHER
 REF15
 5/16/16, JFO
 SET MAG/WASHER
 11/20/17, JFO

O.D.O.T. DISTRICT 2 SURVEY OFFICE

PERSONNEL

REFERENCE NO. 15

SHEET 16 OF 28

NOTES Barnhisel

H.C. Moser

DATE 5-18-02

ROUTE US. 20-A

R.C. Barnhisel

WEATHER Cloudy

COUNTY Williams

TEMP. +50°

TOWNSHIP Brady

SECTION 5

T. 7 N. R. 4 E.

TYPE MONUMENT P.K. NAIL

ON SURFACE - ~~BELOW~~ on surface

LEFT - ~~PAV'T.~~ - RIGHT 1.9'

TO EDGE PAVEMENT

S.I.M. 682+91

