

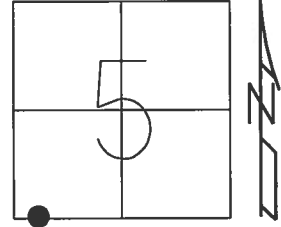
O.D.O.T. DISTRICT 2 SURVEY OFFICE (USE ONLY)

PERSONNEL \_\_\_\_\_ REFERENCE NO. 16 SHEET 21 OF 32

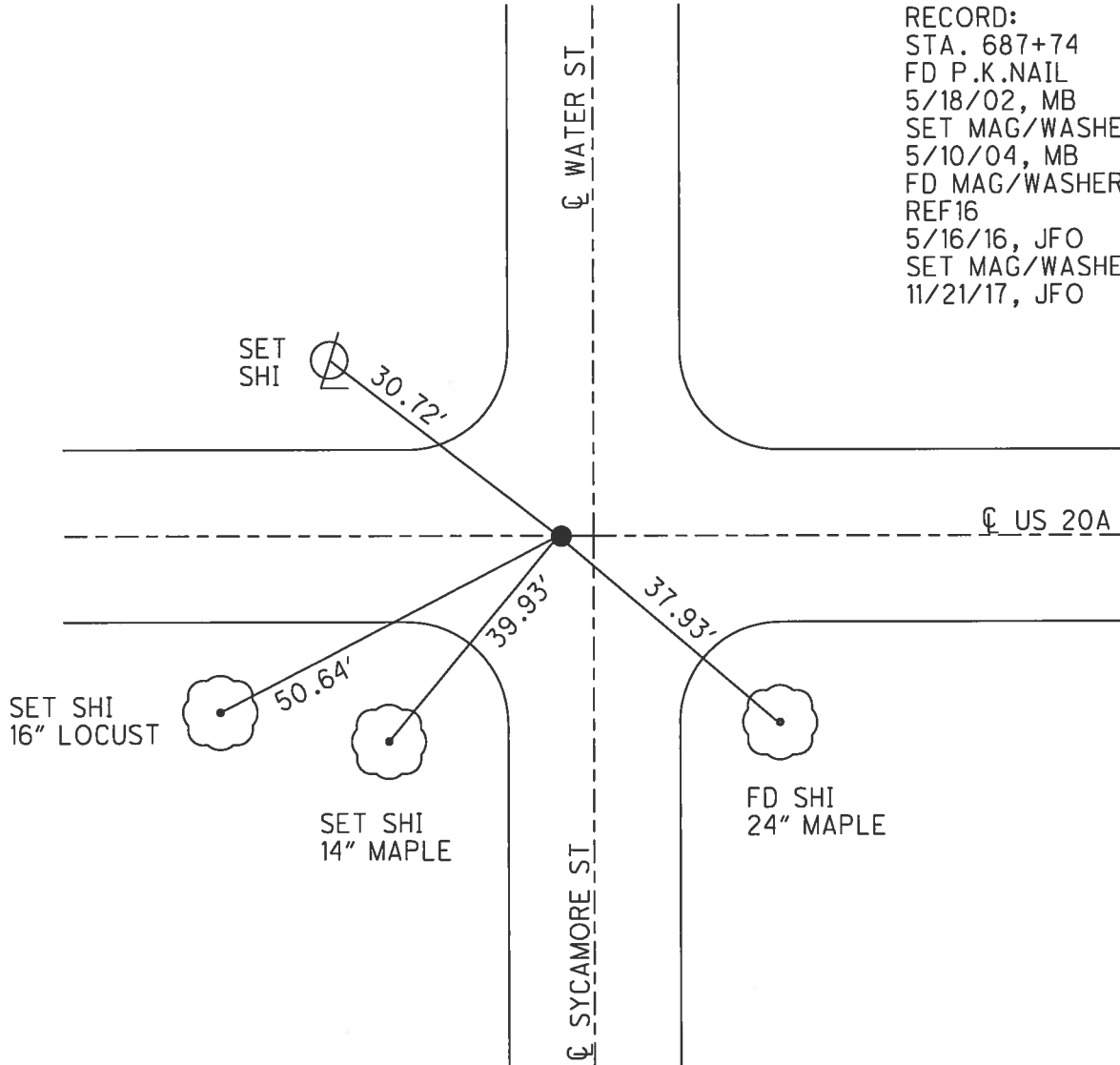
NOTES RHOADES DATE 4/17/17 ROUTE US 20 A  
 H.C. O'DONNELL WEATHER SUNNY COUNTY WILLIAMS  
 R.C. HELDMAN TEMP. 65° TOWNSHIP BRADY  
 SECTION 5  
 T 7 N R 4 E

TYPE MONUMENT MAG/WASHER  
 ON SURFACE - ~~BELOW~~ ON  
 LEFT - ☉ PAV'T - ~~RIGHT~~ 1"  
- TO - EDGE PAVEMENT  
 S.L.M. 576+68.52

Grid: Northing: 705331.221 Easting: 1438621.081



RECORD:  
 STA. 687+74  
 FD P.K.NAIL  
 5/18/02, MB  
 SET MAG/WASHER  
 5/10/04, MB  
 FD MAG/WASHER  
 REF16  
 5/16/16, JFO  
 SET MAG/WASHER  
 11/21/17, JFO



# O.D.O.T. DISTRICT 2 SURVEY OFFICE

PERSONNEL

REFERENCE NO. 16

SHEET 17 OF 28

NOTES Barnhisel

H.C. Moser

DATE 5-18-02

ROUTE U.S. 20-A

R.C. Barnhisel

WEATHER Cloudy

COUNTY Williams

TEMP. +50°

TOWNSHIP Brady

SECTION 5

T 7 N R 4 E

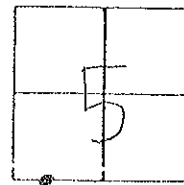
TYPE MONUMENT P.K. NAIL

ON SURFACE - ~~BELOW~~ on surface

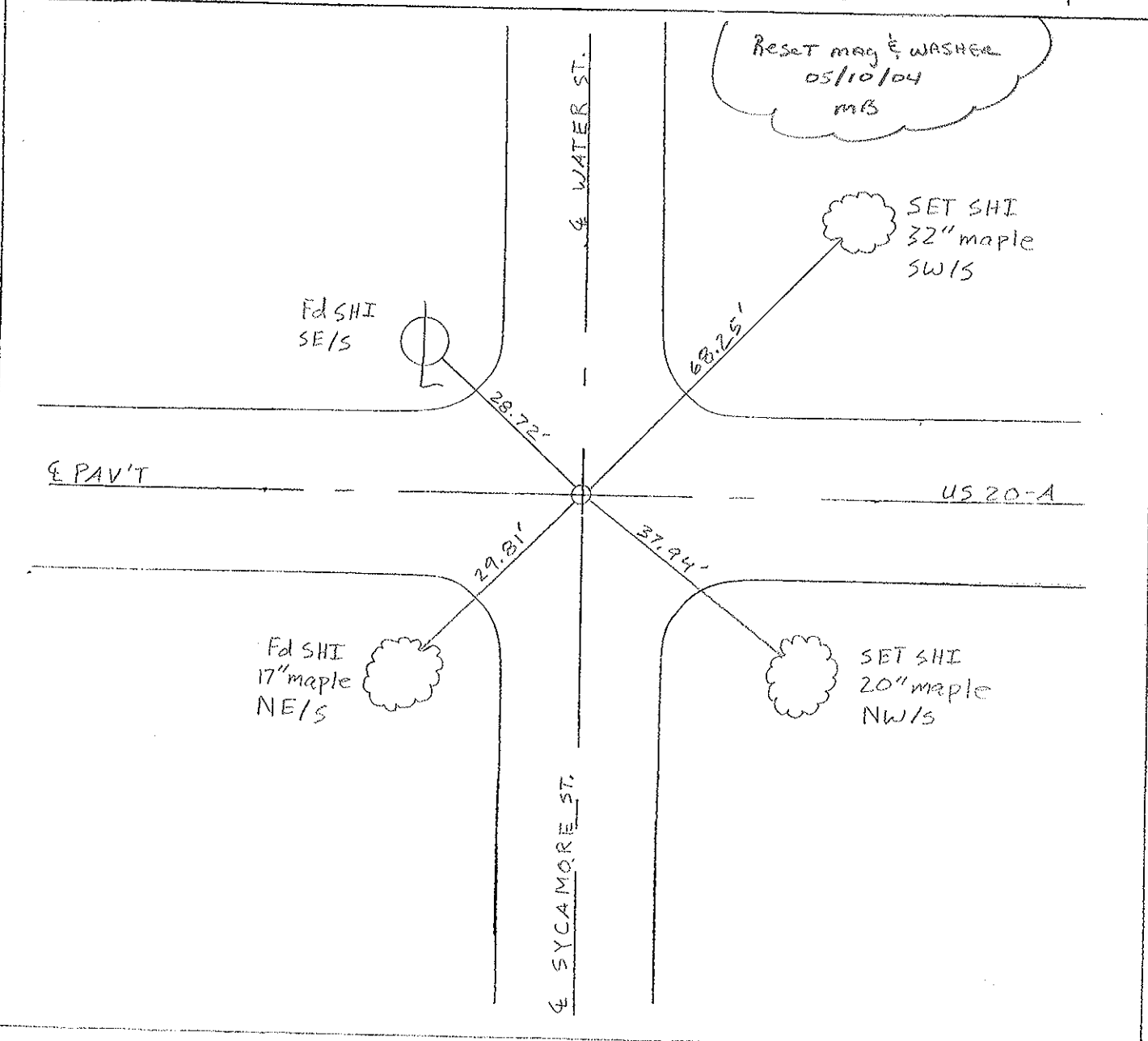
LEFT - ~~PAV'T.~~ - RIGHT 0.6' IT

- TO - EDGE PAVEMENT 4' W. OF & NORTH

S.L.M. 687+74



Reset mag & WASHER  
05/10/04  
m/s



O.D.O.T. DISTRICT 2 SURVEY OFFICE

PERSONNEL \_\_\_\_\_

REFERENCE NO. 16

SHEET 17 OF 21

NOTES D. CURTIS

42 on 127

H.C. T. HOUSEHOLDER

DATE 1-26-90

ROUTE U.S. 20-A

R.C. \_\_\_\_\_

WEATHER COLD

COUNTY WILLIAMS

\_\_\_\_\_

TEMP. 25°

TOWNSHIP BRADY

\_\_\_\_\_

SECTION 5

T 7 N R 4 E

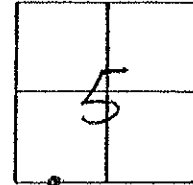
TYPE MONUMENT P.K. NAIL

ON SURFACE - BELOW 3" BELOW

LEFT - ~~P.A.V.T.~~ - RIGHT 1' (±) LEFT

TO EDGE PAVEMENT

S.L.M. \_\_\_\_\_



Set PK Nail 8-07-90 1RS

