

O.D.O.T. DISTRICT 2 SURVEY OFFICE (USE ONLY)

PERSONNEL \_\_\_\_\_ REFERENCE NO. 17 SHEET 22 OF 32

NOTES RHOADES DATE 4/19/17 ROUTE US 20 A  
 H.C. O'DONNELL WEATHER CLOUDY COUNTY WILLIAMS  
 R.C. RHOADES TEMP. 64° TOWNSHIP BRADY  
 SECTION 5  
 T 7 N R 4 E

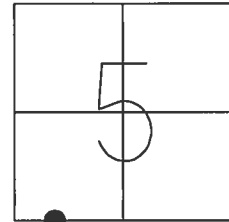
TYPE MONUMENT MAG/WASHER

ON SURFACE - ~~BELOW~~ ON

~~LEFT~~ - ☉ PAV'T - RIGHT 0.8', 11.03' E OF ☉ US 127  
26' TO LT EDGE SIDEWALK

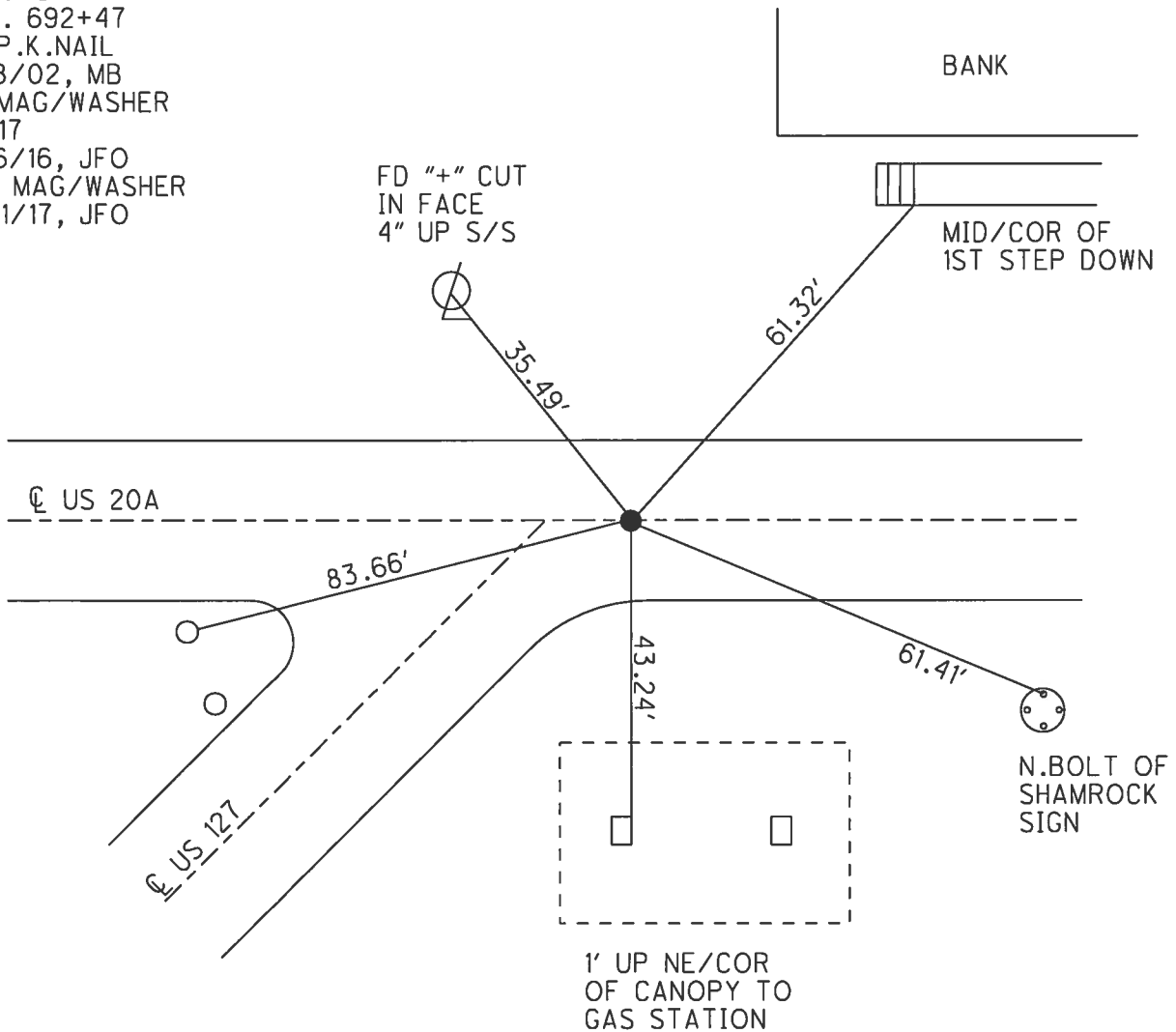
S.L.M. 581+41.43

Grid: Northing: 705321.123 Easting: 1439093.878



RECORD:  
 STA. 692+47  
 FD P.K.NAIL  
 5/18/02, MB  
 FD MAG/WASHER  
 REF17  
 5/16/16, JFO  
 SET MAG/WASHER  
 11/21/17, JFO

NOTE: REF 41 US 127



# O.D.O.T. DISTRICT 2 SURVEY OFFICE

PERSONNEL

REFERENCE NO. 17

SHEET 18 OF 28

NOTES Barnhisel

H.C. Moser

R.C. Barnhisel

DATE 5-18-02

WEATHER cloudy

TEMP. +50°

ROUTE U.S. 20-A

COUNTY Williams

TOWNSHIP Brady

SECTION 5

T7 N R 4 E

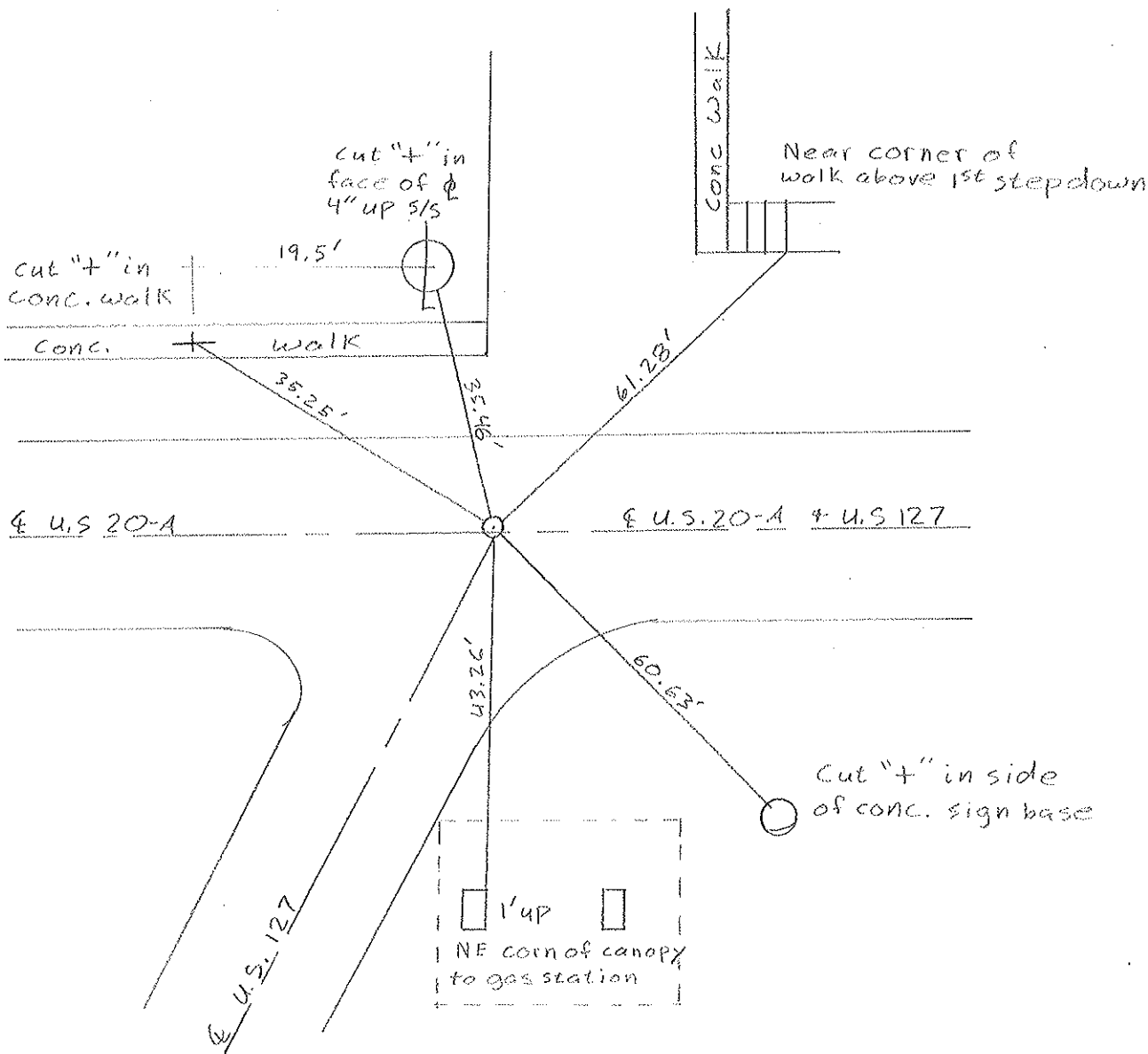
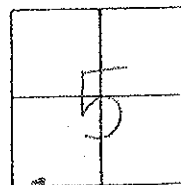
TYPE MONUMENT P.K. NAIL

ON SURFACE - BELOW 2"

~~LEFT~~ - ~~PAV'T.~~ - RIGHT 0.8'

26.0' TO LT. EDGE PAVEMENT sidewalk

S.L.M. 692+47



# O.D.O.T. DISTRICT 2 SURVEY OFFICE

PERSONNEL

REFERENCE NO. 17

SHEET 18 OF 21

NOTES D. CURTIS

41 ON 127

H.C. J. HOUSEHOLDER

DATE 1-26-90

ROUTE U.S. 20-A

R.C. \_\_\_\_\_

WEATHER COLD

COUNTY WILLIAMS

\_\_\_\_\_

TEMP. 25°

TOWNSHIP BRADY

\_\_\_\_\_

SECTION 5

T. 7 N. R. 4 E.

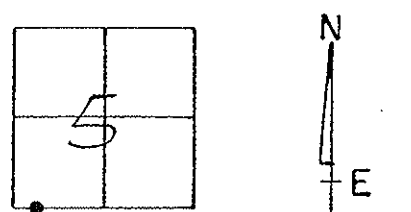
TYPE MONUMENT P.K. NAIL

ON SURFACE - BELOW ON SURFACE

LEFT - ~~6~~ PAV'T. - RIGHT 1' (±) LEFT

\_\_\_\_\_ TO \_\_\_\_\_ EDGE PAVEMENT

S.L.M. \_\_\_\_\_



Set PK Nail 8-07-90 IRS

