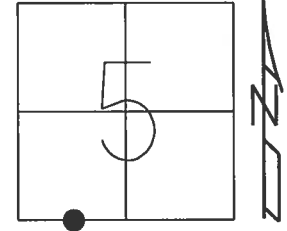


O.D.O.T. DISTRICT 2 SURVEY OFFICE (USE ONLY)

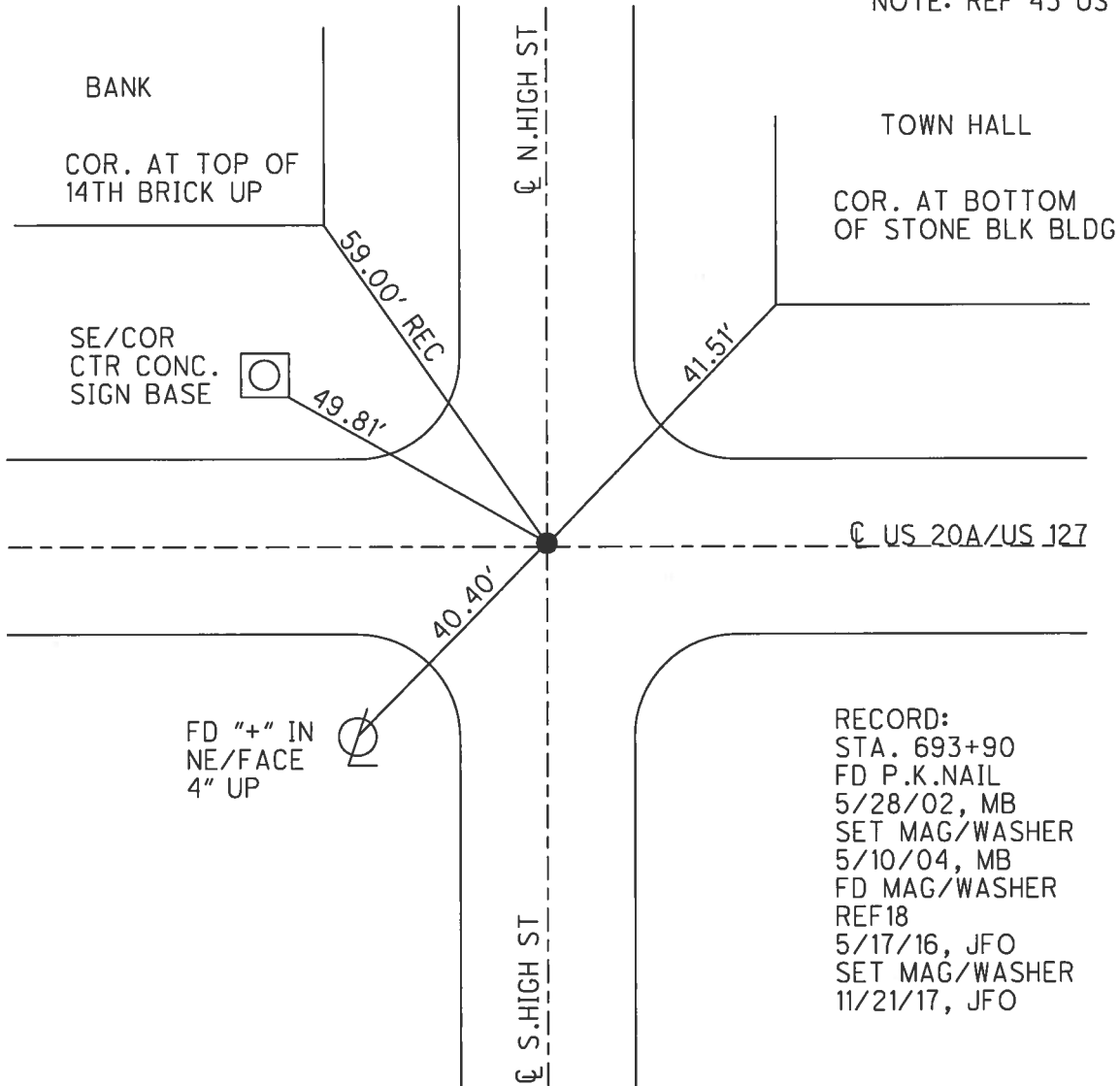
PERSONNEL _____ REFERENCE NO. 18 SHEET 23 OF 32

NOTES RHOADES DATE 4/19/17 ROUTE US 20 A
 H.C. O'DONNELL WEATHER CLOUDY COUNTY WILLIAMS
 R.C. RHOADES TEMP. 64° TOWNSHIP BRADY
 _____ SECTION 5
 _____ T 7 N R 4 E

TYPE MONUMENT MAG NAIL
 ON SURFACE - ~~BELOW~~ ON
 LEFT - ☉ PAV'T - RIGHT ON
TO - EDGE PAVEMENT
 S.L.M. 582+84.14
 Grid: Northing: 705318.131 Easting: 1439236.559



NOTE: REF 43 US 127



RECORD:
 STA. 693+90
 FD P.K.NAIL
 5/28/02, MB
 SET MAG/WASHER
 5/10/04, MB
 FD MAG/WASHER
 REF18
 5/17/16, JFO
 SET MAG/WASHER
 11/21/17, JFO

O.D.O.T. DISTRICT 2 SURVEY OFFICE

PERSONNEL

REFERENCE NO. 18

SHEET 19 OF 28

NOTES Barnhisel

H.C. Canterbury

DATE 5-28-02

ROUTE U.S. 20-A

R.C. Beaumont

WEATHER Cloudy

COUNTY Williams

Malinsky

TEMP. +65°

TOWNSHIP Brady

SECTION 5

T 7 N R 4 E

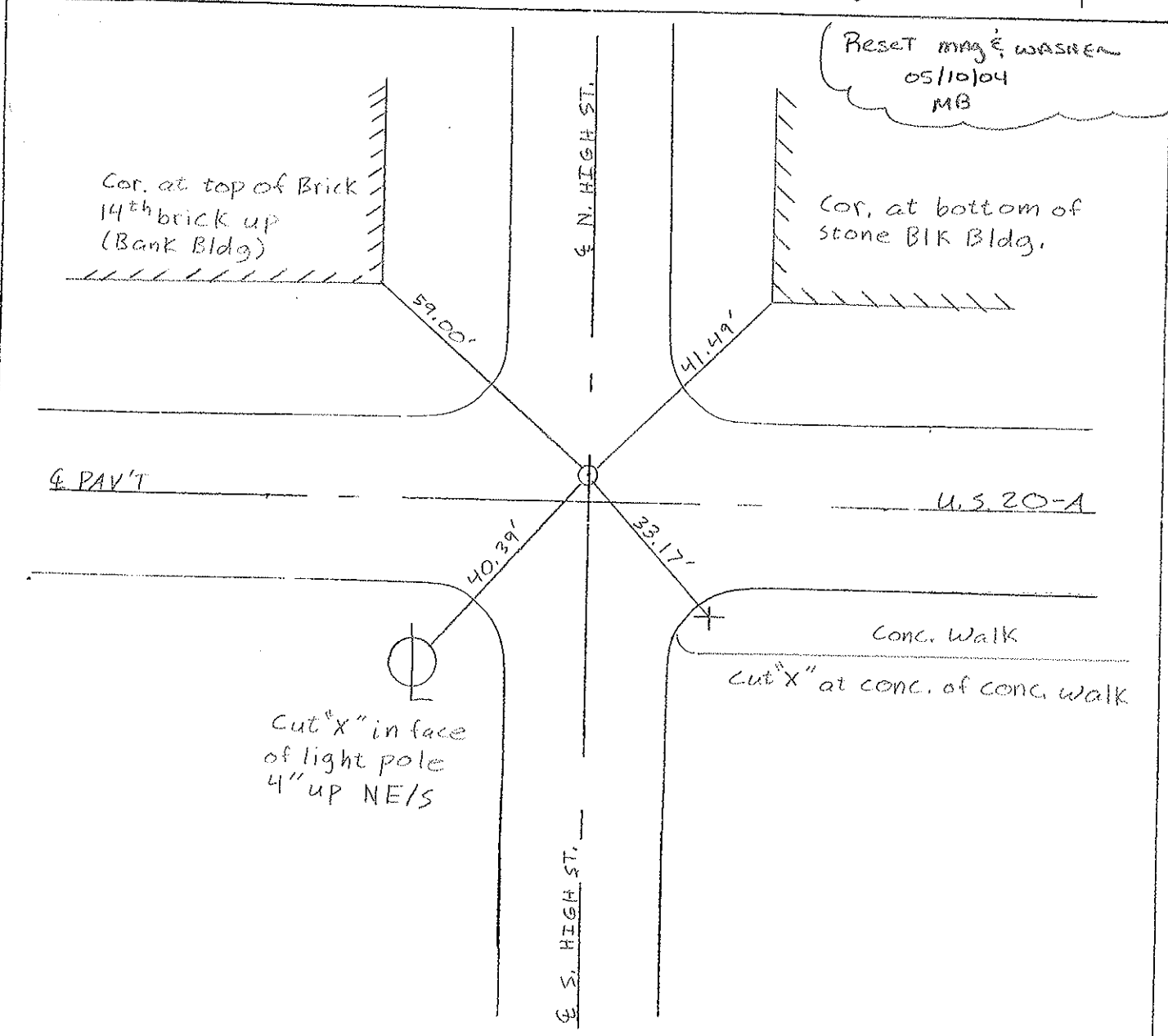
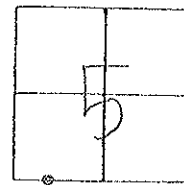
TYPE MONUMENT P.K. NAIL

ON SURFACE - ~~BELOW~~ on surface

LEFT - ~~PAV'T.~~ - RIGHT 2' LT.

TO EDGE PAVEMENT ON ♀ SOUTH

S.L.M. 693+90



O.D.O.T. DISTRICT 2 SURVEY OFFICE

PERSONNEL

REFERENCE NO. 18
43 out 127

SHEET 19 OF 21

NOTES D. CURTIS

H.C. J. HOUSEHOLDER

DATE 1-26-90

ROUTE U.S. 20-A

R.C. _____

WEATHER COLD

COUNTY WILLIAMS

TEMP. 25°

TOWNSHIP BRADY

SECTION 5

T 7 N R 4 E

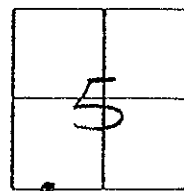
TYPE MONUMENT CG. R. R. SPK.

ON SURFACE - BELOW ON SURFACE

LEFT - PAV'T. - RIGHT 1' (H) LT.

TO EDGE PAVEMENT

S.L.M. _____



Set PK No. 1 8-07-90 IRS

