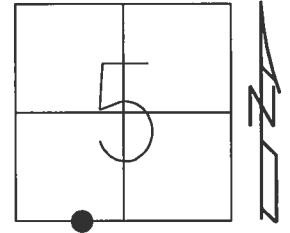


O.D.O.T. DISTRICT 2 SURVEY OFFICE (USE ONLY)

PERSONNEL \_\_\_\_\_ REFERENCE NO. 19 SHEET 24 OF 32

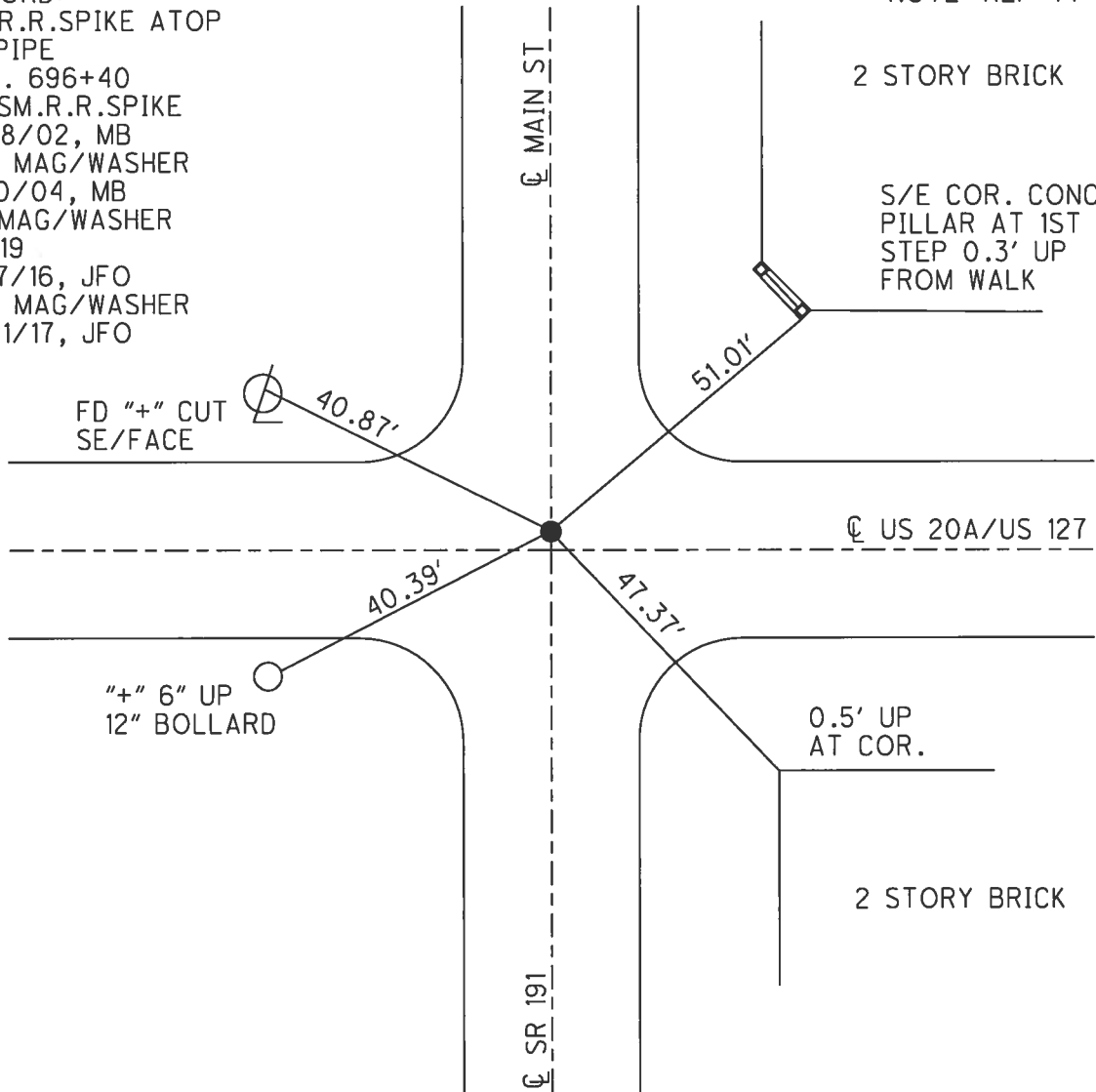
NOTES RHOADES DATE 4/19/17 ROUTE US 20 A  
 H.C. O'DONNELL WEATHER CLOUDY COUNTY WILLIAMS  
 R.C. RHOADES TEMP. 64° TOWNSHIP BRADY  
 \_\_\_\_\_ SECTION 5  
 \_\_\_\_\_ T 7 N R 4 E

TYPE MONUMENT MAG/WASHER  
 ON SURFACE - ~~BELOW~~ ON  
 LEFT - ☉ PAV'T - ~~RIGHT~~ 2.5'  
 \_\_\_\_\_ TO \_\_\_\_\_ EDGE PAVEMENT  
 S.L.M. 585+32.22  
 Grid: Northing: 705313.464 Easting: 1439484.588



RECORD:  
 SM.R.R.SPIKE ATOP  
 1" IPIPE  
 STA. 696+40  
 FD SM.R.R.SPIKE  
 5/28/02, MB  
 SET MAG/WASHER  
 5/10/04, MB  
 FD MAG/WASHER  
 REF19  
 5/17/16, JFO  
 SET MAG/WASHER  
 11/21/17, JFO

NOTE: REF 44 US 127



# O.D.O.T. DISTRICT 2 SURVEY OFFICE

PERSONNEL

REFERENCE NO. 19

SHEET 20 OF 28

NOTES Barnhisel

H.C. Canterbury

DATE 5-28-02

ROUTE U.S. 20-A

R.C. Beaumont

WEATHER Cloudy

COUNTY Williams

Malinsky

TEMP. +65°

TOWNSHIP Brady

SECTION 5

T 7 N 4 E

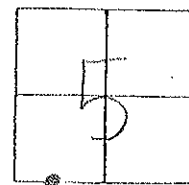
TYPE MONUMENT Sm RR SPK

ON SURFACE - ~~BELOW~~ on surface

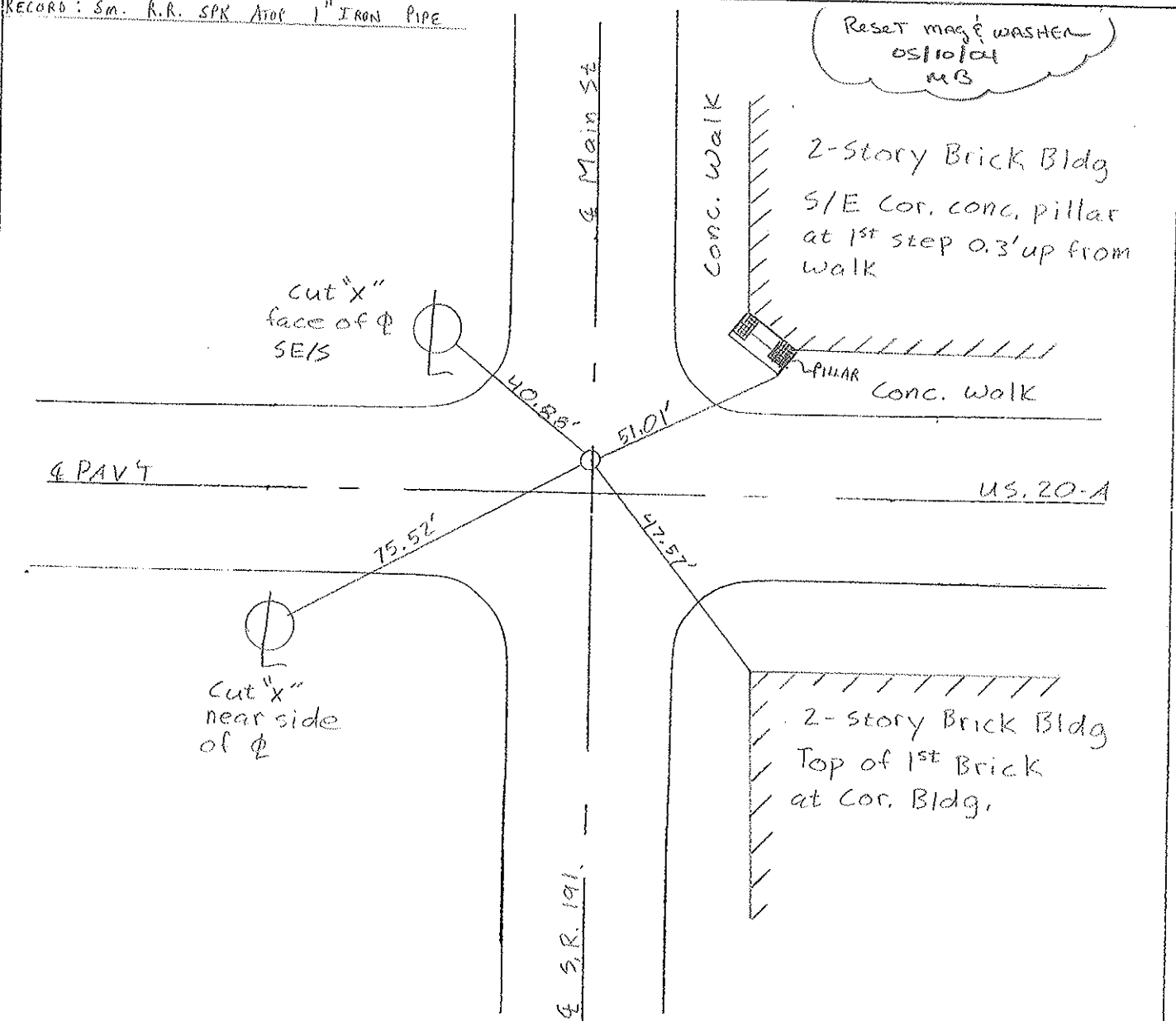
LEFT - ~~PAV'T.~~ - RIGHT 2.5' LT.

TO EDGE PAVEMENT ON ☉ SOUTH

S.L.M. 696 + 40



RECORD: Sm. R.R. SPK ATOP 1" IRON PIPE



# O.D.O.T. DISTRICT 2 SURVEY OFFICE

PERSONNEL \_\_\_\_\_

REFERENCE NO. 19  
44 04 127

SHEET 20 OF 21

NOTES J. CURTIS

H.C. J. HOUSEHOLDER

R.C. \_\_\_\_\_

DATE 3-2-90

WEATHER MILD

TEMP. 35°

ROUTE U.S. 20-A

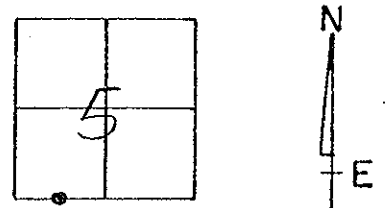
COUNTY WILLIAMS

TOWNSHIP BRADY

SECTION 5

T 7 N R 4 E

TYPE MONUMENT 1" IRON PIPE  
ON SURFACE - BELOW 1" BELOW SURFACE  
LEFT- & PAV'T. - RIGHT & PAV'T  
TO EDGE PAVEMENT  
S.L.M. \_\_\_\_\_



Set Small PK 5pk. 8-27-90 IRS

