

O.D.O.T. DISTRICT 2 SURVEY OFFICE (USE ONLY)

PERSONNEL _____ REFERENCE NO. 21 SHEET 26 OF 32

NOTES RHOADES DATE 4/19/17 ROUTE US 20 A
 H.C. O'DONNELL WEATHER CLOUDY COUNTY WILLIAMS
 R.C. RHOADES TEMP. 64° TOWNSHIP BRADY
 SECTION 5
 T 7 N R 4 E

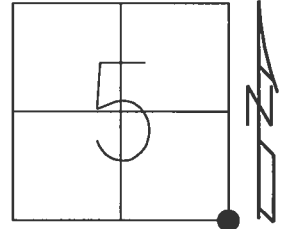
TYPE MONUMENT MAG/WASHER

ON SURFACE - ~~BELOW~~ ON

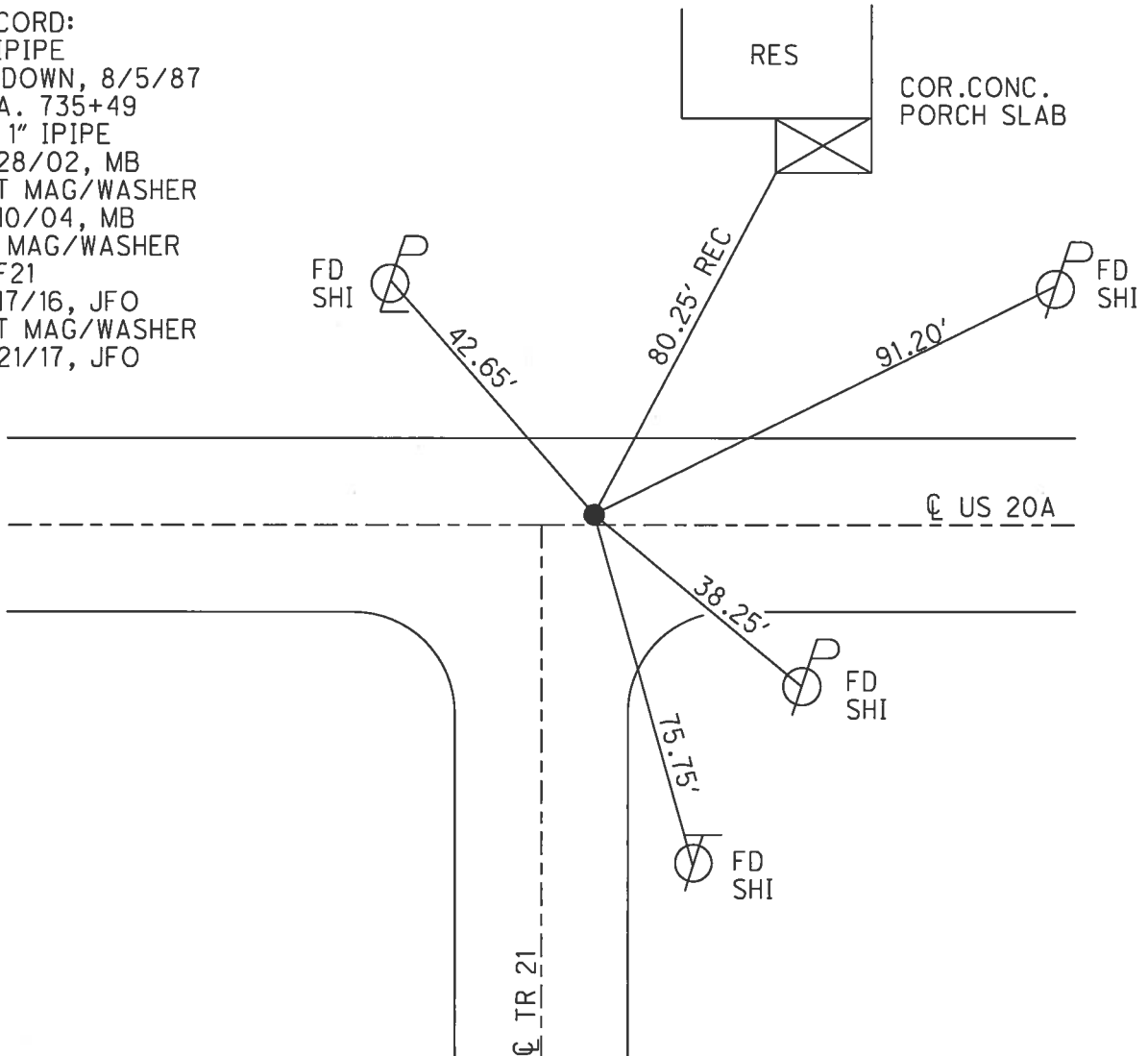
LEFT - ☉ PAV'T - ~~RIGHT~~ 0.5', 6.5' E OF ☉ S
9.4' TO LT EDGE PAVEMENT

S.L.M. 624+38.93

Grid: Northing: 705226.391 Easting: 1443390.334



RECORD:
 1" IPIPE
 4" DOWN, 8/5/87
 STA. 735+49
 FD 1" IPIPE
 5/28/02, MB
 SET MAG/WASHER
 5/10/04, MB
 FD MAG/WASHER
 REF21
 5/17/16, JFO
 SET MAG/WASHER
 11/21/17, JFO



O.D.O.T. DISTRICT 2 SURVEY OFFICE

PERSONNEL

REFERENCE NO. 15

SHEET 22 OF 28

NOTES Barnhisel

H.C. Canterbury

R.C. Beaumont

Malinsky

DATE 5-28-02

WEATHER Cloudy

TEMP. +70°

ROUTE US 20-A

COUNTY Williams

TOWNSHIP Brady

SECTION 5

T 7 N R 4 E

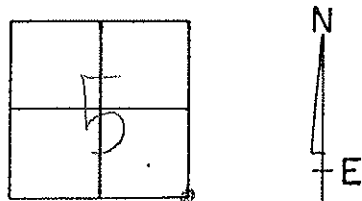
TYPE MONUMENT 1" I. Pipe

ON SURFACE - BELOW 4"

LEFT - ~~C~~ PAV'T. - RIGHT 0.5' LT.

9.4 TO LT EDGE PAVEMENT 6.5' E. OF Q SOUTH

S.L.M. 735+49



Found 1" I. pipe
4" deep
8-5-87

Reset mag & washer
05/10/04
MB

