

O.D.O.T. DISTRICT 2 SURVEY OFFICE (USE ONLY)

PERSONNEL \_\_\_\_\_ REFERENCE NO. 22 SHEET 27 OF 32  
 NOTES RHOADES DATE 4/19/17 ROUTE US 20 A  
 H.C. O'DONNELL WEATHER CLOUDY COUNTY WILLIAMS  
 R.C. RHOADES TEMP. 74° TOWNSHIP BRADY  
 \_\_\_\_\_ SECTION 4  
 \_\_\_\_\_ T 7 N R 4 E

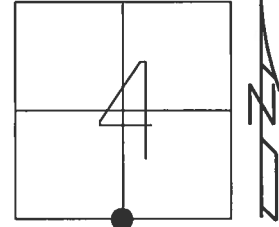
TYPE MONUMENT 1" IPIPE

~~ON SURFACE~~ - BELOW 4"

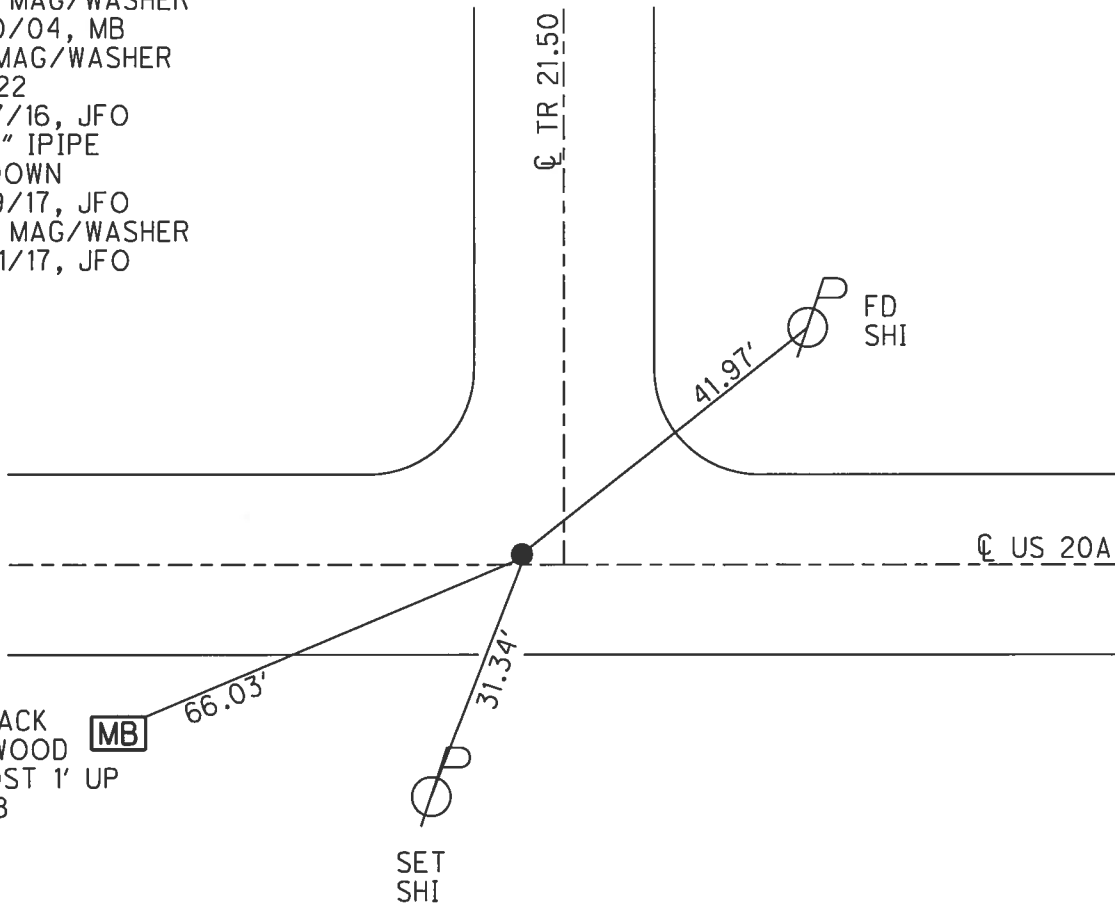
LEFT - ☉ PAV'T - ~~RIGHT~~ 0.5', 2' W OF ☉ N  
10' TO RT EDGE PAVEMENT

S.L.M. 650+75.67

Grid: Northing: 705166.366 Easting: 1446026.379



RECORD:  
 1" IPIPE  
 4" DOWN, 8/5/87  
 STA. 761+87  
 FD 1" IPIPE  
 4" DOWN  
 5/28/02, MB  
 SET MAG/WASHER  
 5/10/04, MB  
 FD MAG/WASHER  
 REF22  
 5/17/16, JFO  
 FD 1" IPIPE  
 4" DOWN  
 4/19/17, JFO  
 SET MAG/WASHER  
 11/21/17, JFO



SET TACK  
 4X4" WOOD  
 MB POST 1' UP  
 #21488

# O.D.O.T. DISTRICT 2 SURVEY OFFICE

PERSONNEL

REFERENCE NO. 16

SHEET 23 OF 28

NOTES Barnhisel

H.C. Canterbury

DATE 5-28-02

ROUTE U.S. 20-A

R.C. Beaumont

WEATHER Cloudy

COUNTY Williams

Malinsky

TEMP. +70°

TOWNSHIP Brady

SECTION 4

T. 7 N. R. 4 E.

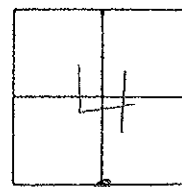
TYPE MONUMENT 1" I. pipe

ON SURFACE - BELOW 4"

LEFT - ~~C~~ PAV'T. - RIGHT 0.5' LT.

10.0 TO RT EDGE PAVEMENT 2.0' W. OF E NORTH

S.L.M. 761+87



Found 1" I. pipe  
4" deep  
8-5-87

Reset mag & washer  
05/10/04  
MB

