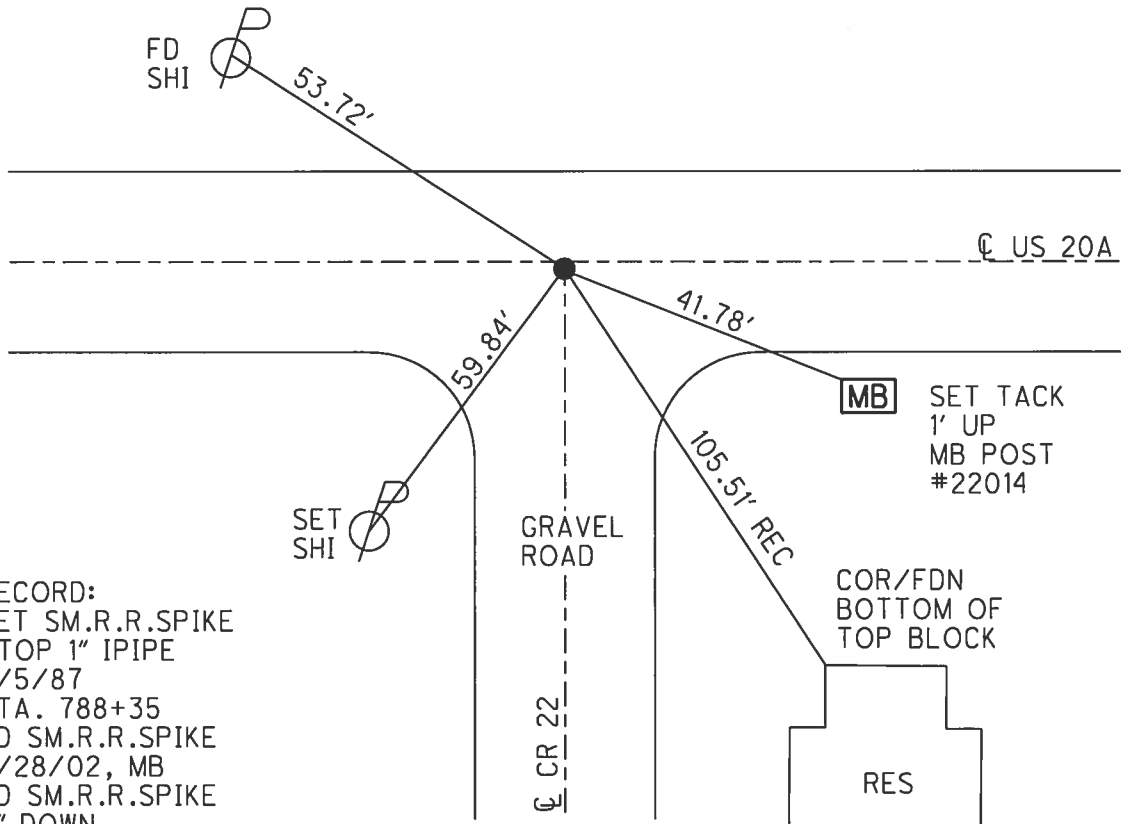
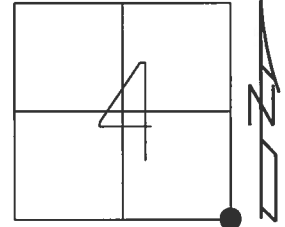


O.D.O.T. DISTRICT 2 SURVEY OFFICE (USE ONLY)

PERSONNEL \_\_\_\_\_ REFERENCE NO. 23 SHEET 28 OF 32  
 NOTES RHOADES DATE 4/19/17 ROUTE US 20 A  
 H.C. O'DONNELL WEATHER CLOUDY COUNTY WILLIAMS  
 R.C. RHOADES TEMP. 74° TOWNSHIP BRADY  
 \_\_\_\_\_ SECTION 4  
 \_\_\_\_\_ T 7 N R 4 E

TYPE MONUMENT 1" IPIPE  
~~ON SURFACE~~ - BELOW 2"  
~~LEFT~~ - CL PAV'T - RIGHT 0.5'  
10.9' TO LT EDGE PAVEMENT  
 S.L.M. 677+20.42  
 Grid: Northing: 705111.274 Easting: 1448670.469



RECORD:  
 SET SM.R.R.SPIKE  
 ATOP 1" IPIPE  
 8/5/87  
 STA. 788+35  
 FD SM.R.R.SPIKE  
 5/28/02, MB  
 FD SM.R.R.SPIKE  
 2" DOWN  
 REF23  
 5/17/16, JFO  
 FD 1" IPIPE  
 2" DOWN  
 4/19/17, JFO  
 SET MAG/WASHER  
 11/21/17, JFO

# O.D.O.T. DISTRICT 2 SURVEY OFFICE

PERSONNEL \_\_\_\_\_

REFERENCE NO. 17

SHEET 24 OF 28

NOTES Barnhisel

H.C. Canterbury

R.C. Beaumont

Malinsky

DATE 5-28-02

WEATHER Cloudy

TEMP. +70°

ROUTE U.S. 20-A

COUNTY Williams

TOWNSHIP Brady

SECTION 3-4-9-10

T 7 N R 4 E

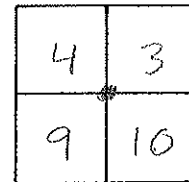
TYPE MONUMENT Sm RR SPK

ON SURFACE - ~~BELOW~~ on surface

~~LEFT - E PAV'T.~~ - RIGHT 0.5'

10.9' TO LT EDGE PAVEMENT ON E SOUTH

S.L.M. 788+35



set small RR spk  
to surface atop 1" I.P.I.P.E  
8-5-87

Fd.  
SHT.  
SE/S.



53.72'



SET S/S CORN. FENCE POST

NOTE: DIG IF NEEDED.  
TIES DIDN'T CROSS BUT WAS  
ABLE TO LOCATE WITH METAL  
LOCATOR. 05/10/04  
MB

E Pav'T

US 20-A

E Co. Rd. #22

41.81'

44.37'

105.51-0  
(Rec)

SET TACK in MB

SET TACK in N. Post SIGN

Cor of Edn  
Bottom of  
Top Block

Res